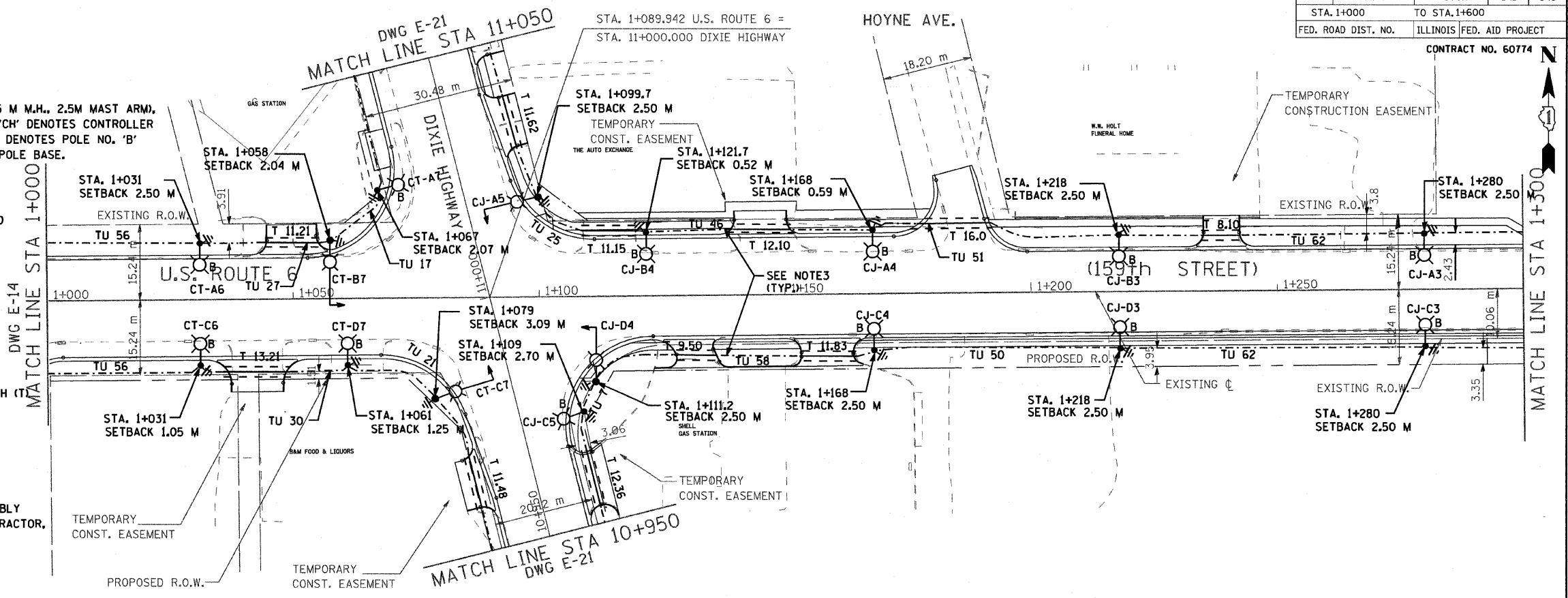


F.A. RTE.	SECTION	COUNTY	TOTAL SHEETS	SHEET NO.
351	327TR	COOK	541	345
STA. 1+000		TO STA. 1+600		
FED. ROAD DIST. NO. ILLINOIS FED. AID PROJECT				

CONTRACT NO. 60774

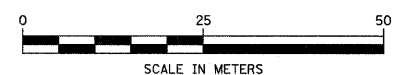
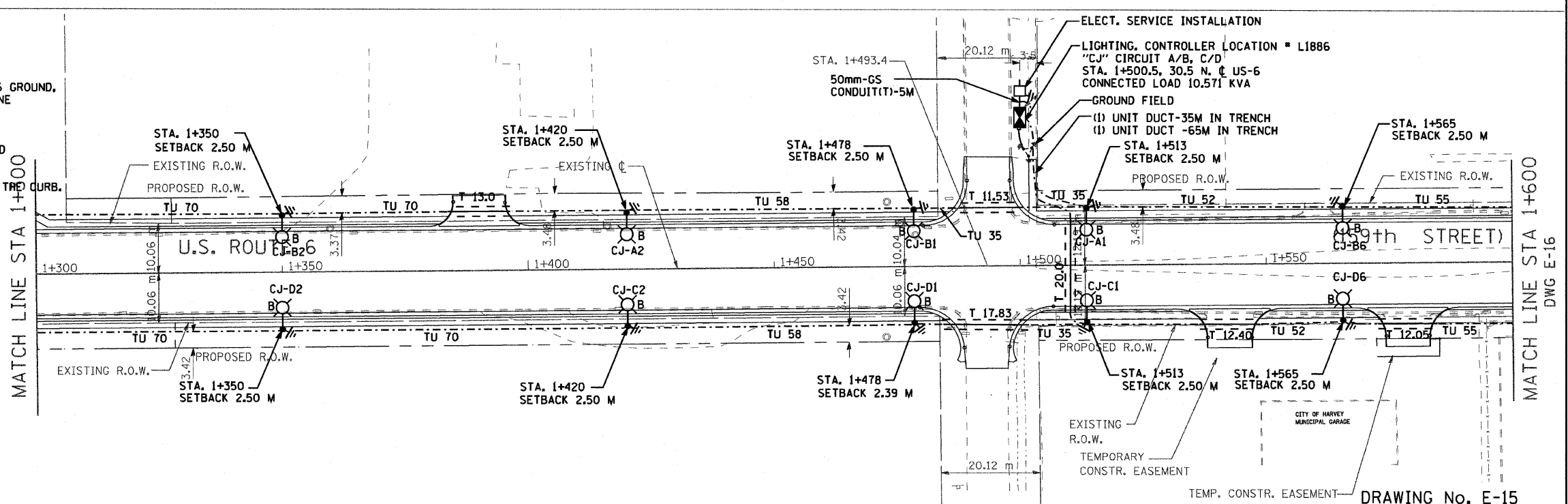
LEGEND

- CH-AX
B
PROPOSED ALUMINUM LIGHT POLE (14.5 M M.H., 2.5M MAST ARM), FOUNDATION & 310W HPS LUMINAIRE. 'CH' DENOTES CONTROLLER NO. 'A' DENOTES CIRCUIT NUMBER, 'X' DENOTES POLE NO., 'B' DENOTES BREAKAWAY DEVICE AT THE POLE BASE.
- UNDER GROUND SERVICE 50mm GALVANIZED STEEL
- ⊠
EXISTING CONTROLLER TO BE REMOVED AT COMPLETION OF PROJECT
- ⊠
PROPOSED CONTROLLER
- GS
GALVANIZED STEEL
- TU XX
TU DENOTES UNIT DUCT IN TRENCH, SIZES AS NOTED ON PLANS, XX-DENOTES LENGTH IN METERS.
- ⊥
GROUND ROD, 16MM DIA, X 3.0M LONG
- T XX
GALVANIZED STEEL CONDUIT IN TRENCH (T UNDER DRIVEWAYS/PAVEMENT 50MM, XX DENOTES LENGTH IN METERS.
- ⊥
GROUND FIELD FOR CONTROLLERS. 2/0 AWG BARE COPPER WIRE
- ⊥
STEEL COMBINATION MAST ARM ASSEMBLY AND POLE (BY TRAFFIC SIGNAL CONTRACTOR, SEE NOTE-4)



NOTES:

1. ALL DIMENSIONS ARE IN METERS
2. REFER TO LIGHTING NOTES ON DRAWING E-1.
3. UNIT DUCT, WITH 3-1/2 NO. 6 AND 1-1/2 NO. 6 GROUND, 600V (EPR-TYPE RHW), 25MM DIA., POLYETHYLENE UNLESS OTHERWISE NOTED.
4. LUMINAIRES ON THE COMBINATION MAST ARM ASSEMBLY SHALL BE FURNISHED, INSTALLED AND WIRED BY THE LIGHTING CONTRACTOR.
5. POLES SETBACK ARE MEASURED FROM BACK OF THE CURB.



Delta Engineering, Inc.
CONSULTING ENGINEERS, CHICAGO, ILLINOIS

REVISIONS	
NAME	DATE

ILLINOIS DEPARTMENT OF TRANSPORTATION
US RTE 6 FROM I-294 TO IL RTE 1
PROPOSED LIGHTING PLAN
AND POLES LOCATIONS
FROM STA. 1+000 TO STA. 1+600

SCALE AS NOTED
DATE 01/28/09

DRAWN BY S.S./W.S.
CHECKED BY C.K./H.S.