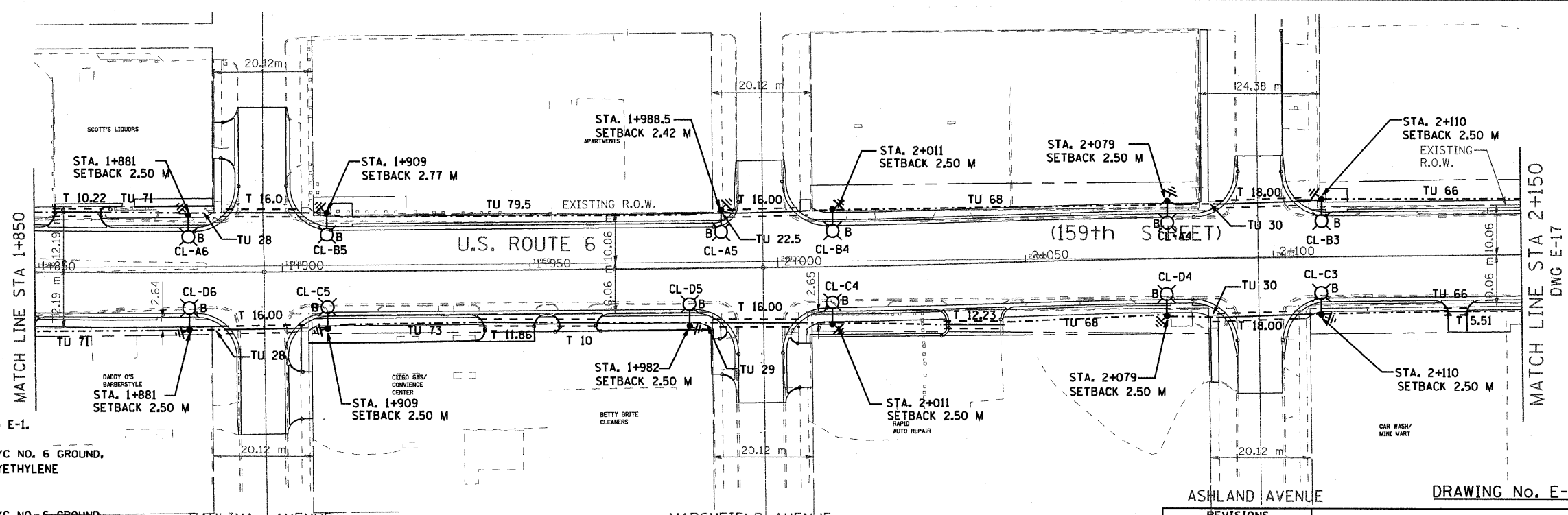
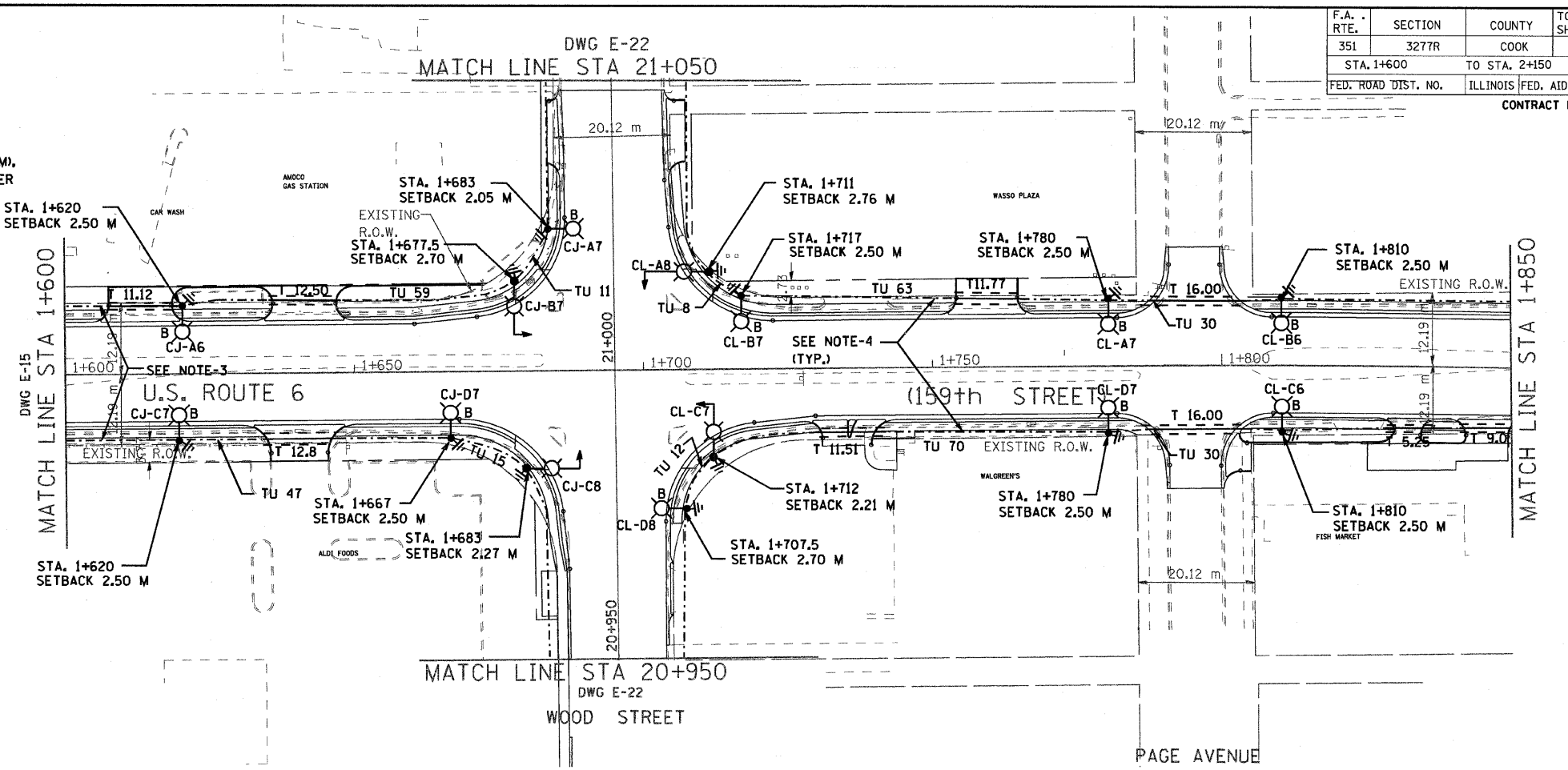


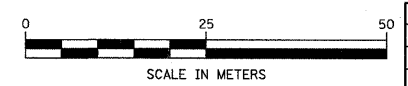
F.A. RTE.	SECTION	COUNTY	TOTAL SHEETS	SHEET NO.
351	3277R	COOK	541	346
STA. 1+600		TO STA. 2+150		
FED. ROAD DIST. NO.		ILLINOIS		FED. AID PROJECT
CONTRACT NO. 60774				

**LEGEND**

- CH-AX  
B  
PROPOSED ALUMINUM LIGHT POLE (14.5 M M.H., 2.5M MAST ARM), FOUNDATION & 310W HPS LUMINAIRE. 'CH' DENOTES CONTROLLER NO. 'A' DENOTES CIRCUIT NUMBER, 'X' DENOTES POLE NO. 'B' DENOTES BREAKAWAY DEVICE AT THE POLE BASE.
- UNDER GROUND SERVICE 50mm GALVANIZED STEEL
- ⊠ EXISTING CONTROLLER TO BE REMOVED AT COMPLETION OF PROJECT
- ⊠ PROPOSED CONTROLLER
- GS GALVANIZED STEEL
- TU XX TU DENOTES UNIT DUCT IN TRENCH, SIZES AS NOTED ON PLANS, XX-DENOTES LENGTH IN METERS.
- ⏏ GROUND ROD, 16MM DIA, X 3.0M LONG
- T XX GALVANIZED STEEL CONDUIT IN TRENCH (T) UNDER DRIVEWAYS/PAVEMENT 50MM, XX DENOTES LENGTH IN METERS.
- ⏏ GROUND FIELD FOR CONTROLLERS. 2/0 AWG BARE COPPER WIRE
- ⊠ STEEL COMBINATION MAST ARM ASSEMBLY AND POLE (BY TRAFFIC SIGNAL CONTRACTOR, SEE NOTE-4)



- NOTES:**
- ALL DIMENSIONS ARE IN METERS.
  - REFER TO LIGHTING NOTES ON DRAWING E-1.
  - UNIT DUCT, WITH 3-1/2" NO. 6 AND 1-1/2" NO. 6 GROUND, 600V (EPR-TYPE RHW), 25MM DIA., POLYETHYLENE UNLESS OTHERWISE NOTED.
  - UNIT DUCT, WITH 3-1/2" NO. 4 AND 1-1/2" NO. 6 GROUND 600V (EPR-TYPE RHW), 30MM DIA., POLYETHYLENE (CKTS. CL-A/B & CL-C/D ONLY)
  - LUMINAIRES ON THE COMBINATION MAST ARM ASSEMBLY SHALL BE FURNISHED, INSTALLED AND WIRED BY THE LIGHTING CONTRACTOR.
  - POLES SETBACK ARE MEASURED FROM BACK OF THE CURB.



REVISIONS	
NAME	DATE

**DRAWING No. E-16**

ILLINOIS DEPARTMENT OF TRANSPORTATION

US RTE 6 FROM I-294 TO IL RTE 1  
PROPOSED LIGHTING PLAN  
AND POLES LOCATIONS  
FROM STA. 1+600 TO STA. 2+150

SCALE AS NOTED  
DATE 01/28/09

DRAWN BY S.S./W.S.  
CHECKED BY C.K./H.S.