

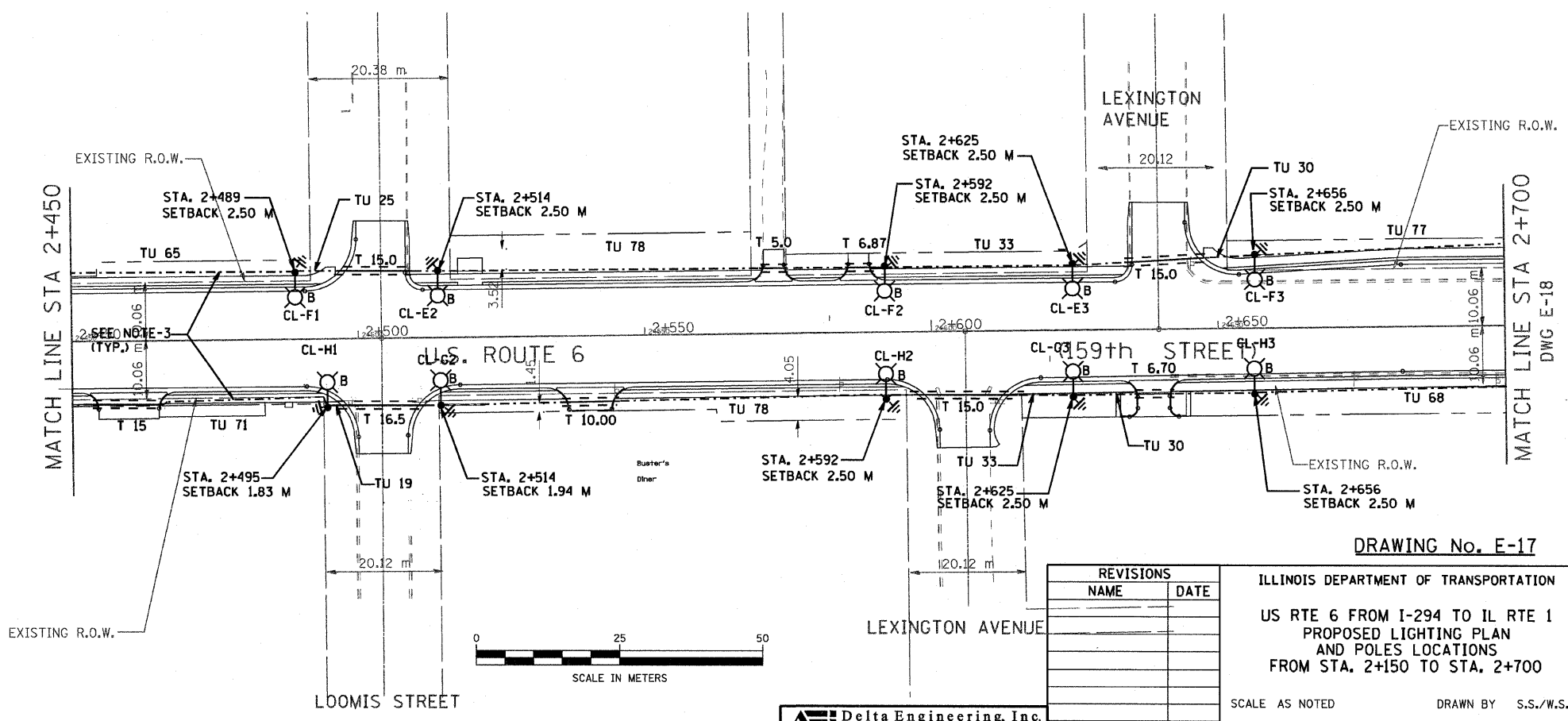
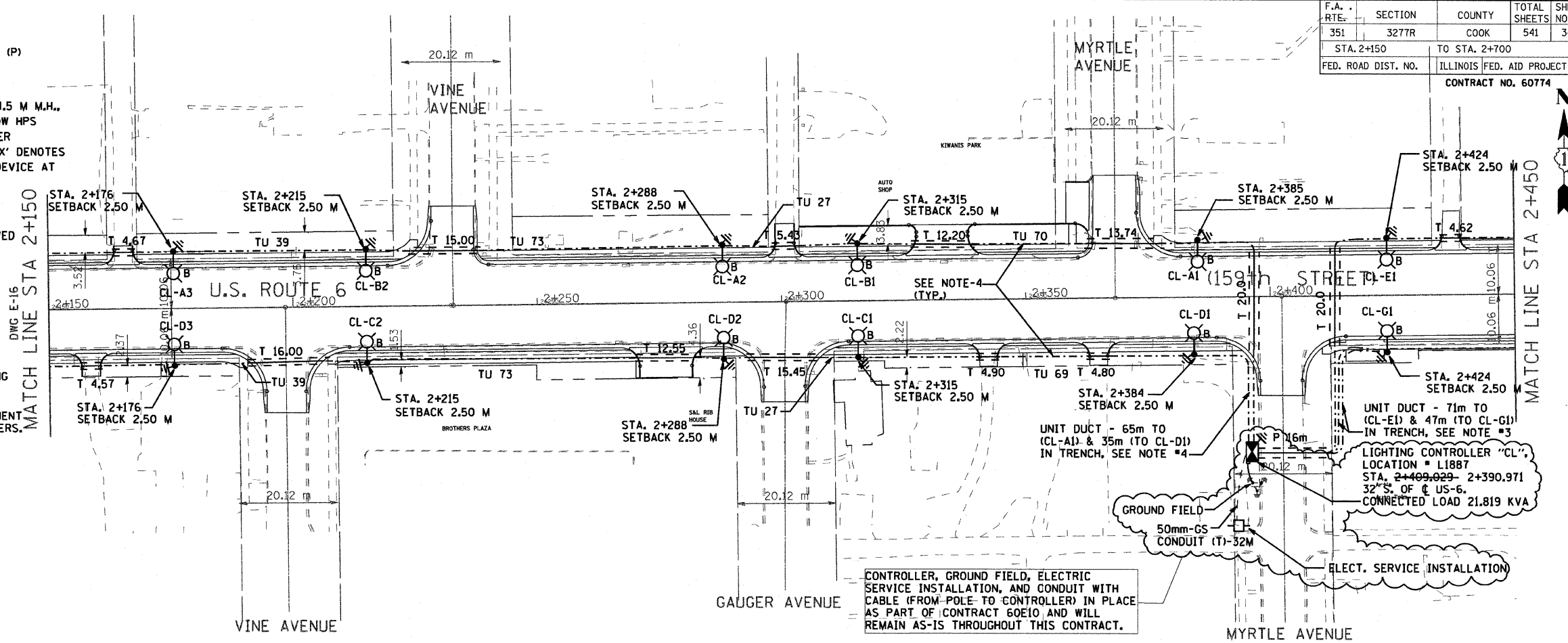
F.A. RTE.	SECTION	COUNTY	TOTAL SHEETS	SHEET NO.
351	327TR	COOK	541	347
STA. 2+150		TO STA. 2+700		
FED. ROAD DIST. NO.		ILLINOIS FED. AID PROJECT		
CONTRACT NO. 60774				

LEGEND

- GALVANIZED STEEL CONDUIT PUSHED (P) UNDER DRIVEWAYS/PAVEMENT 65MM, XX DENOTES LENGTH IN METERS.
- PROPOSED ALUMINUM LIGHT POLE (14.5 M M.H., 2.5M MAST ARM), FOUNDATION & 310W HPS LUMINAIRE. 'CH' DENOTES CONTROLLER NO. 'A' DENOTES CIRCUIT NUMBER. 'X' DENOTES POLE NO. 'B' DENOTES BREAKAWAY DEVICE AT THE POLE BASE.
- UNDER GROUND SERVICE 50mm GALVANIZED STEEL
- EXISTING CONTROLLER TO BE REMOVED AT COMPLETION OF PROJECT
- PROPOSED CONTROLLER
- GS GALVANIZED STEEL
- TU DENOTES UNIT DUCT IN TRENCH, SIZES AS NOTED ON PLANS, XX-DENOTES LENGTH IN METERS.
- GROUND ROD, 16MM DIA, X 3.0M LONG
- GALVANIZED STEEL CONDUIT IN TRENCH (T) UNDER DRIVEWAYS/PAVEMENT 50MM, XX DENOTES LENGTH IN METERS.
- GROUND FIELD FOR CONTROLLERS. 2/0 AWG BARE COPPER WIRE

NOTES:

1. ALL DIMENSIONS ARE IN METERS.
2. REFER TO LIGHTING NOTES ON DRAWING E-1.
3. UNIT DUCT, WITH 3-1/C NO. 6 AND 1-1/C NO. 6 GROUND, 600V (EPR-TYPE RHW), 25MM DIA., POLYETHYLENE UNLESS OTHERWISE NOTED.
4. UNIT DUCT, WITH 3-1/C NO. 4 AND 1-1/C NO. 6 GROUND, 600V (EPR-TYPE RHW), 30MM DIA., POLYETHYLENE (CKTS. CL-A/B & CL-C/D ONLY).
5. POLES SETBACK ARE MEASURED FROM BACK OF THE CURB.



DRAWING No. E-17

REVISIONS	
NAME	DATE

ILLINOIS DEPARTMENT OF TRANSPORTATION
 US RTE 6 FROM I-294 TO IL RTE 1
 PROPOSED LIGHTING PLAN
 AND POLES LOCATIONS
 FROM STA. 2+150 TO STA. 2+700

SCALE AS NOTED
 DATE 01/28/09

DRAWN BY S.S./W.S.
 CHECKED BY C.K./H.S.