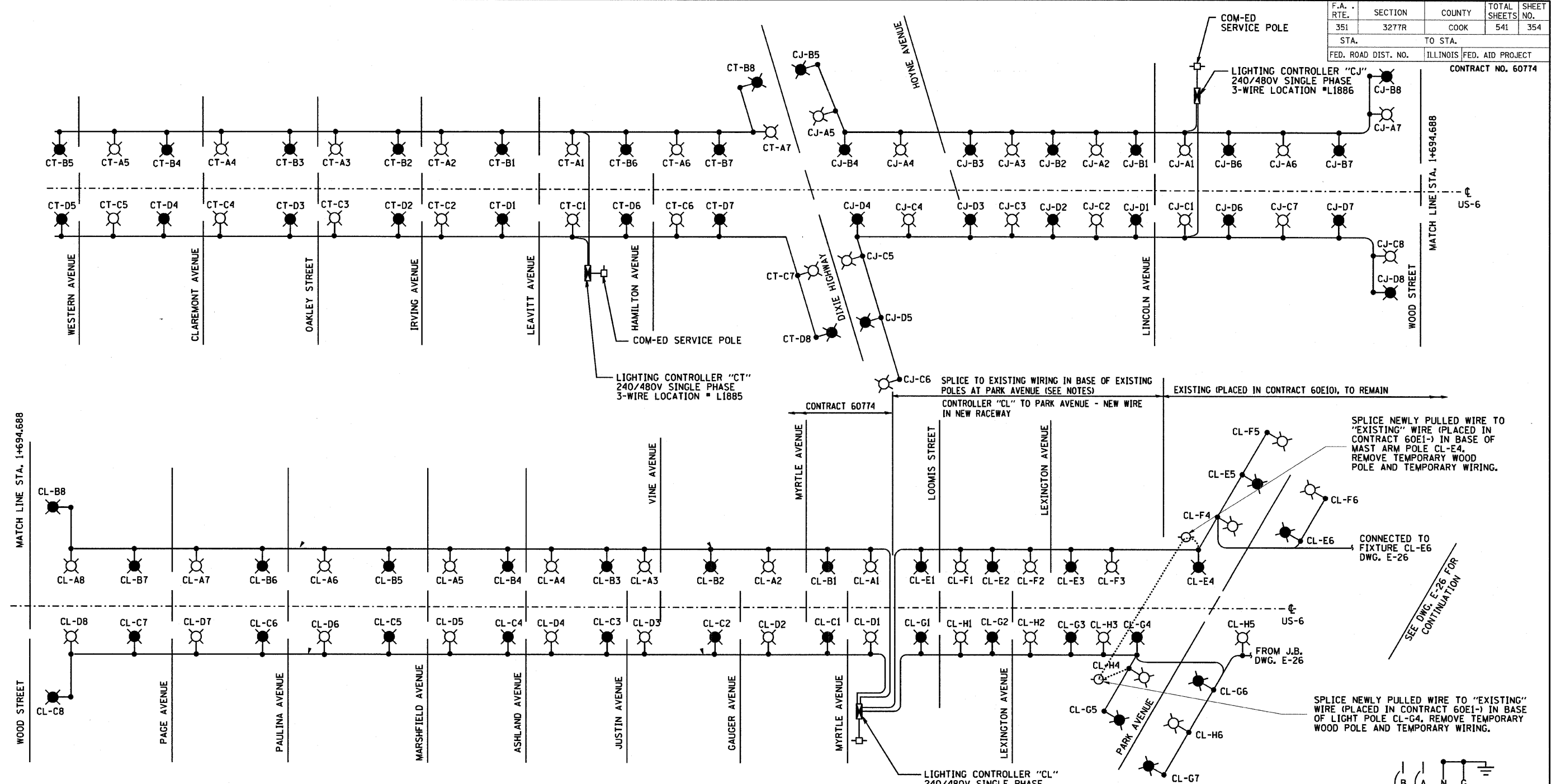


F.A. RTE.	SECTION	COUNTY	TOTAL SHEETS NO.	SHEET NO.
351	3277R	COOK	541	354
STA.		TO STA.		
FED. ROAD DIST. NO.		ILLINOIS FED. AID PROJECT		
		CONTRACT NO. 60774		



LOAD TABULATION FOR LIGHTING CONTROLLER "CT"

CIRCUIT	LAMP LOAD	TOTAL LOAD	AMPS
A (240V)	7 @ 310 W HPS	2387	9.95
B (240V)	8 @ 310 W HPS	2728	11.37
C (240V)	7 @ 310 W HPS	2387	9.95
D (240V)	8 @ 310 W HPS	2728	11.37
(480V)	TOTAL VA	10230	21.31

LOAD TABULATION FOR LIGHTING CONTROLLER "CJ"

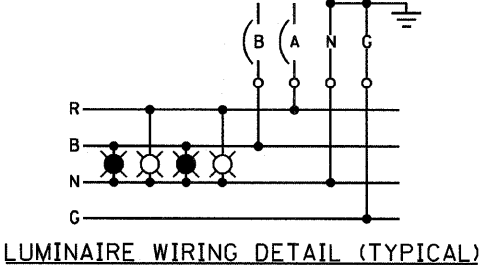
CIRCUIT	LAMP LOAD	TOTAL LOAD	AMPS
A (240V)	8 @ 310 W HPS	2728	11.37
B (240V)	8 @ 310 W HPS	2728	11.37
C (240V)	8 @ 310 W HPS	2728	11.37
D (240V)	8 @ 310 W HPS	2728	11.37
E (240V)	6 @ 310 W HPS 5 @ 70 W HPS	2471	10.29
F (240V)	7 @ 310 W HPS 5 @ 70 W HPS	2812	11.71
G (240V)	7 @ 310 W HPS 5 @ 70 W HPS	2812	11.71
H (240V)	7 @ 310 W HPS 5 @ 70 W HPS	2812	11.71
(480V)	TOTAL VA	21819	45.45

LOAD TABULATION FOR LIGHTING CONTROLLER "CL"

CIRCUIT	LAMP LOAD	TOTAL LOAD	AMPS
A (240V)	7 @ 310 W HPS	2387	9.95
B (240V)	8 @ 310 W HPS	2728	11.37
C (240V)	8 @ 310 W HPS	2728	11.37
D (240V)	8 @ 310 W HPS	2728	11.37
(480V)	TOTAL VA	10571	22.02

LEGEND:

- ⊠ 310 HPS M-C 111 LUMINAIRE ON RED CABLE
- ⊠ 310 HPS M-C 111 LUMINAIRE ON BLACK CABLE
- ⊠ PROPOSED LIGHTING CONTROLLER
- ⊠ ComEd SERVICE POLE
- TEMPORARY WOOD POLE (TO BE REMOVED)



DRAWING No. E-25

REVISIONS	
NAME	DATE

ILLINOIS DEPARTMENT OF TRANSPORTATION
 US RTE 6 FROM I-294 TO IL RTE 1
 SINGLE LINE DIAGRAM
 PROPOSED LIGHTING
 SHEET '1' OF '2'
 SCALE AS NOTED
 DATE 01/28/09
 DRAWN BY S.S./W.S.
 CHECKED BY C.K./H.S.