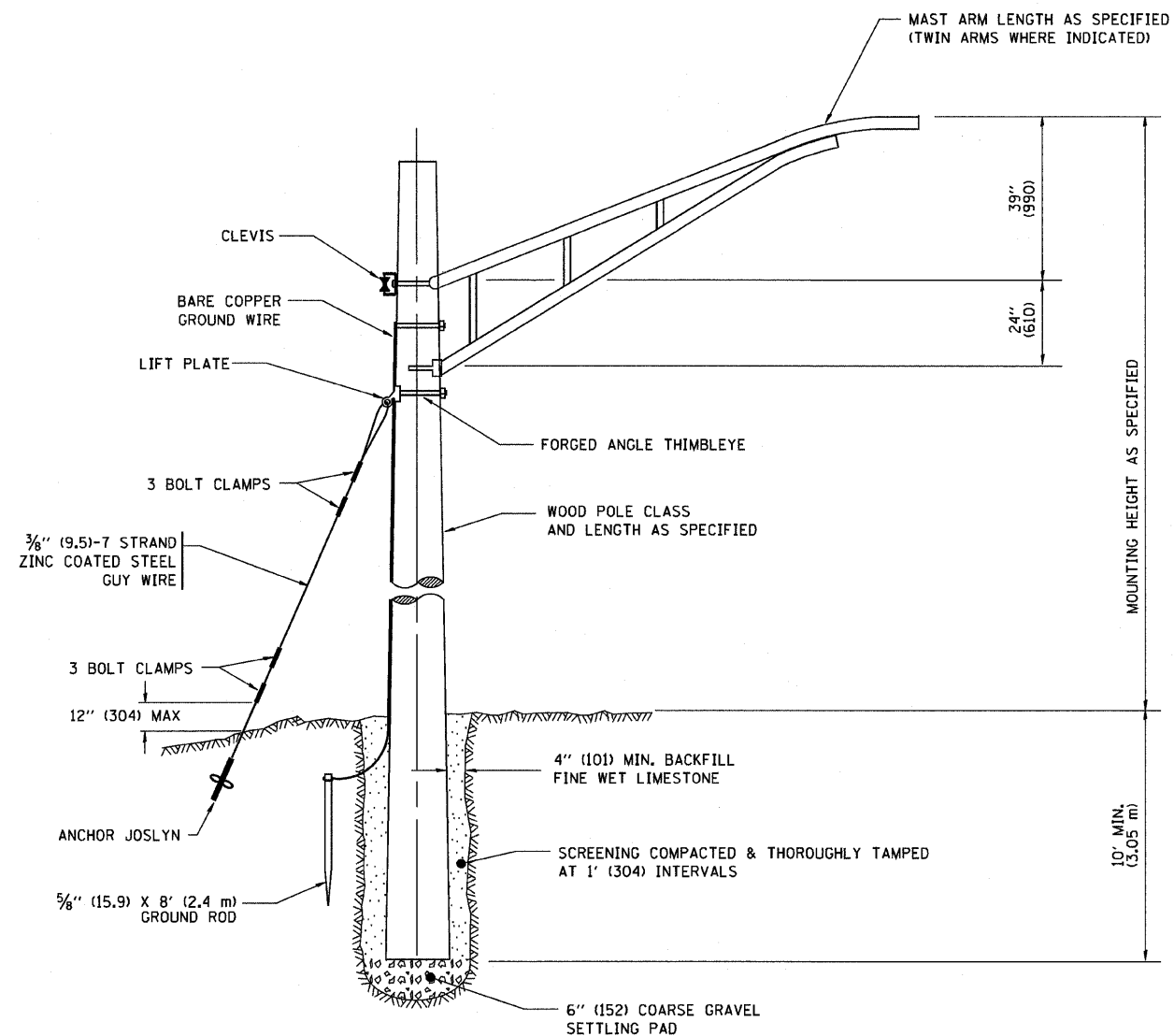
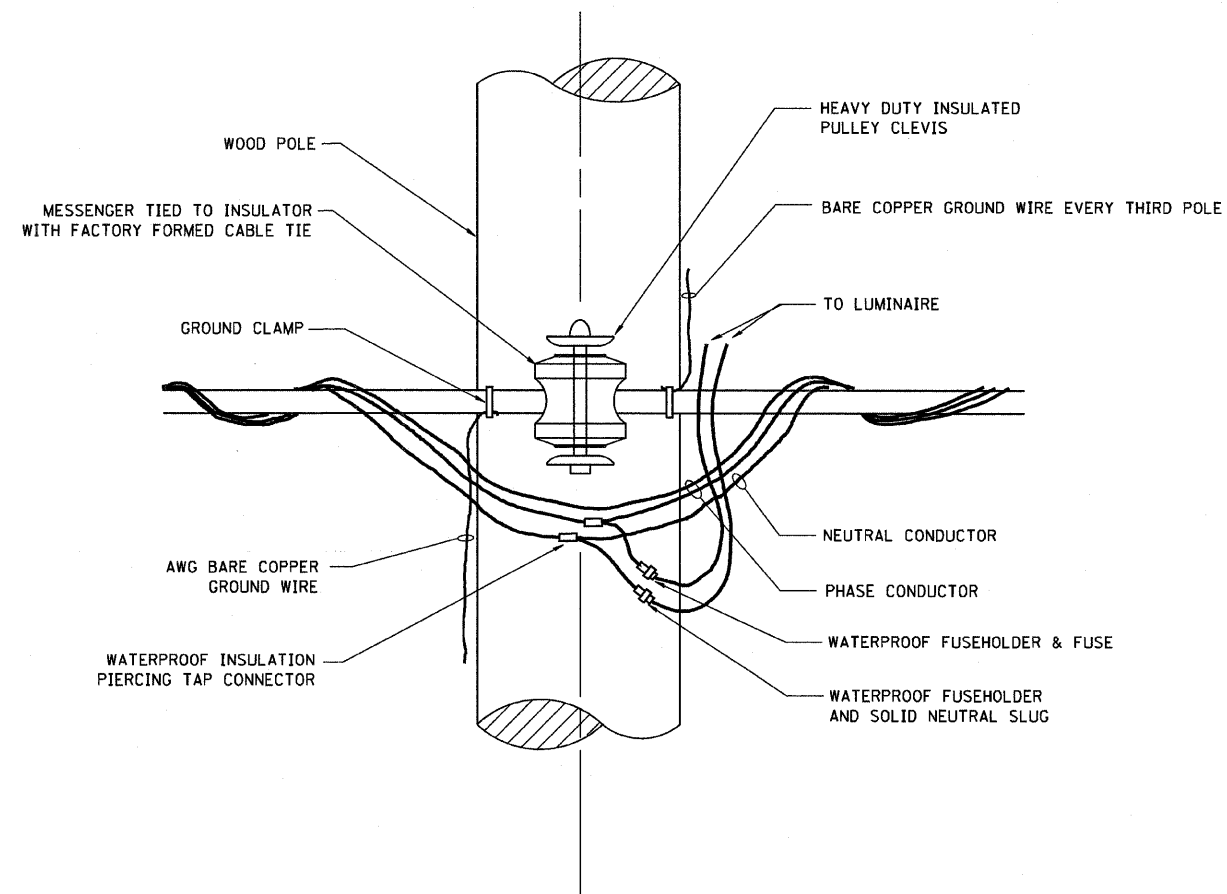


F.A.D. RTE.	SECTION	COUNTY	TOTAL SHEETS	SHEET NO.
351	3277R	COOK	541	367
STA.		TO STA.		
FED. ROAD DIST. NO.		ILLINOIS FED. AID PROJECT		



TEMPORARY LIGHT POLE DETAIL



TEMPORARY LIGHT POLE ATTACHMENT DETAIL

NOTES:

1. ALL DIMENSIONS IN INCHES (MILLIMETERS) UNLESS OTHERWISE INDICATED

PLOT DATE = 4/18/2007
 FILE NAME = K:\dashed\be808.dgn
 USER = bboard1

REVISIONS	
NAME	DATE
	08/08/03

ILLINOIS DEPARTMENT OF TRANSPORTATION

TEMPORARY LIGHT POLE
 DETAILS

SCALE: VERT. NONE
 HORIZ.

DRAWN BY
 CHECKED BY
 BE-800