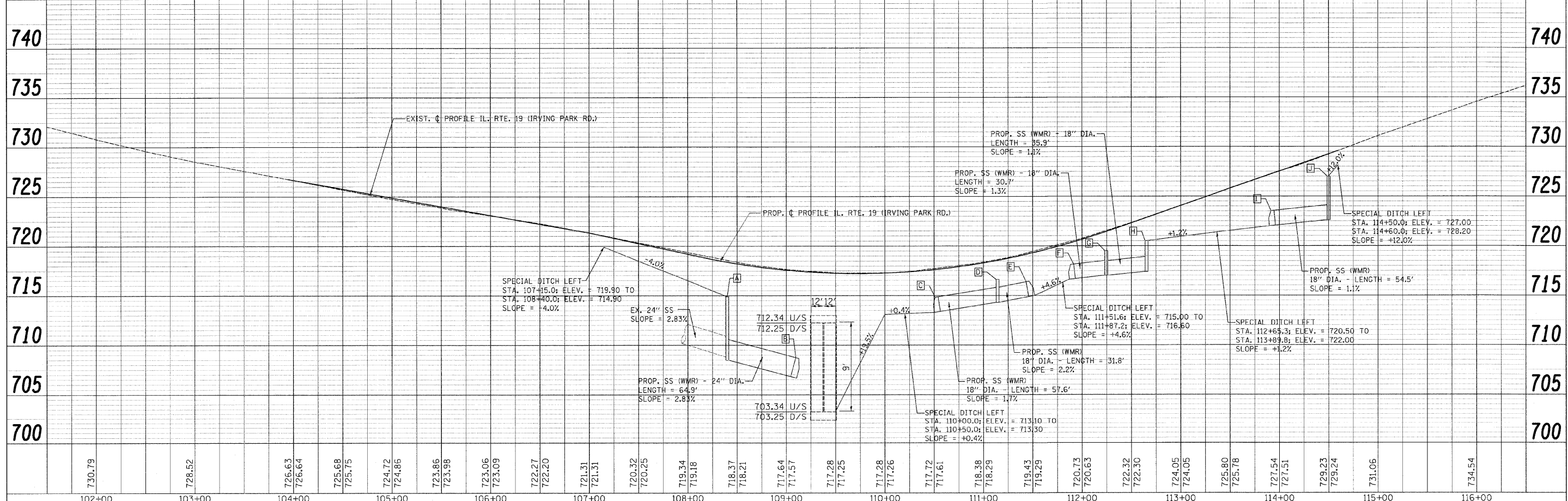
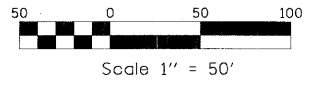
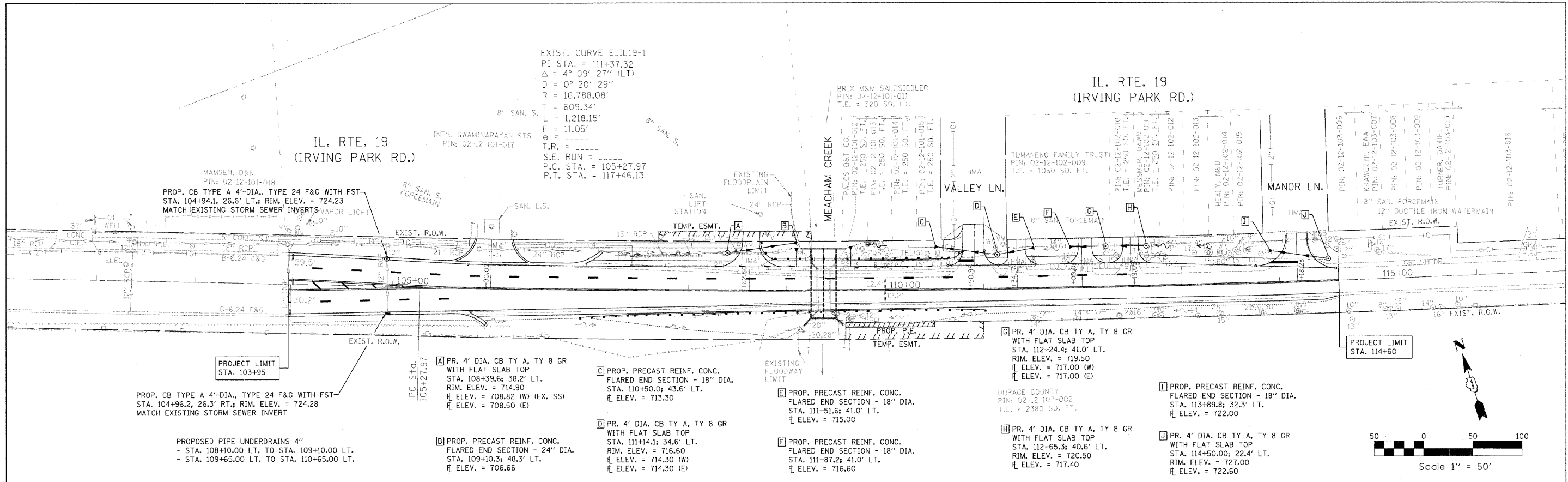


DATE	
BY	
REVIEWED	
NOTED	
ALIGNED	
CHECKED	
APPROVED	
FILE NAME	
NO.	

DATE	
BY	
REVIEWED	
NOTED	
ALIGNED	
CHECKED	
APPROVED	
FILE NAME	
NO.	



FILE NAME = ...D168A98-ehs-drain.dgn	USER NAME = Plotted by Administrator	DESIGNED - ST	REVISED -	<b>STATE OF ILLINOIS DEPARTMENT OF TRANSPORTATION</b>	<b>PROPOSED DRAINAGE PLAN IL ROUTE 19 (IRVING PARK ROAD) OVER MEACHAM CREEK</b>	F.A.U. RTE. 1321	SECTION 31T-2	COUNTY DUPAGE	TOTAL SHEETS 59	SHEET NO. 26		
PLOT SCALE = 50,0000' / IN.	CHECKED - DMM	REVISIED -	REVISIED -			SCALE: 1"=50'H, 5'V	SHEET NO. OF SHEETS	STA. 103+95.00 TO STA. 114+60.00	FED. ROAD DIST. NO. ILLINOIS FED. AID PROJECT			
PLOT DATE = 1/18/2009	DATE - 08/2008	REVISIED -	REVISIED -									