

STATE OF ILLINOIS
DEPARTMENT OF TRANSPORTATION
DIVISION OF HIGHWAYS

PROPOSED HIGHWAY PLANS

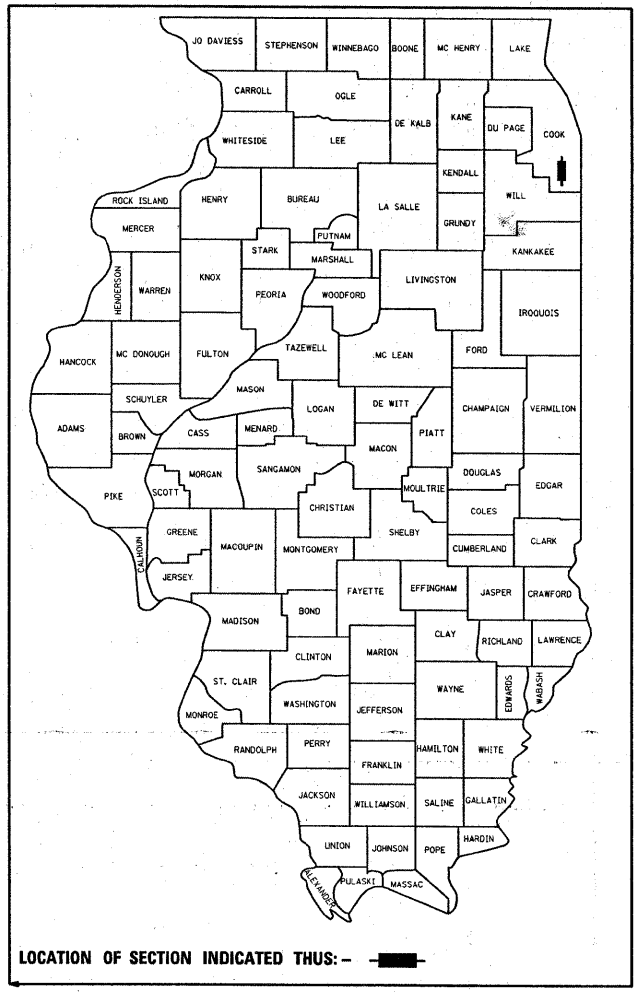
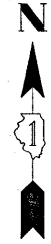
FOR INDEX OF SHEETS, SEE SHEET NO. 2

PROJECT LOCATED
IN THE VILLAGE OF HOMEWOOD

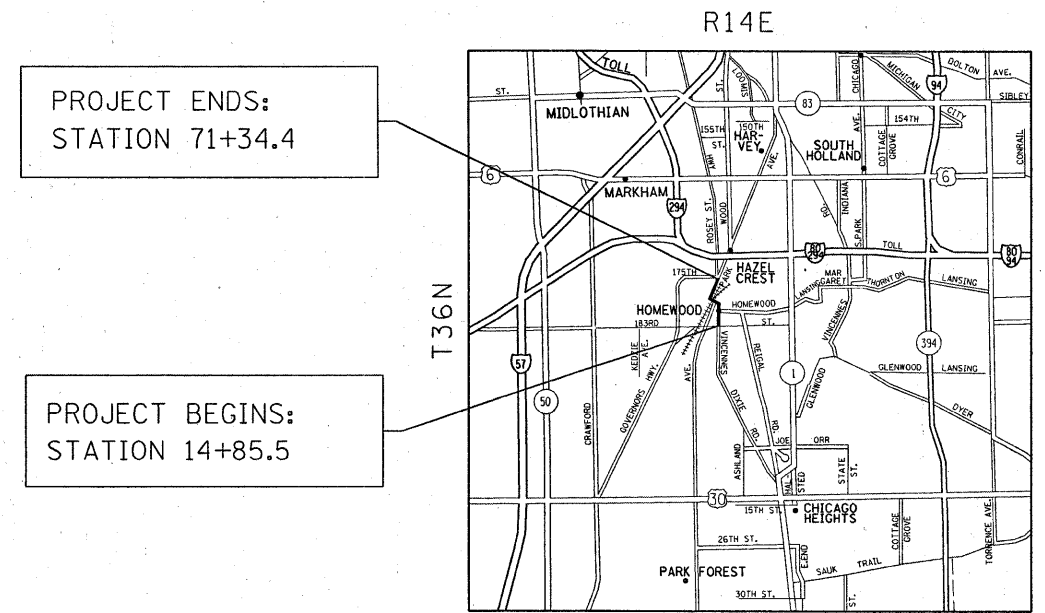
F.A.U. ROUTE 2843: DIXIE HIGHWAY
GOVERNOR'S HWY TO 183rd STREET
SECTION: 2006-022 RS
PROJECT: *ESP-2843(006)*
RESURFACING (MAINTENANCE)
COOK COUNTY
C-91-370-06

F.A.U. RTE.	SECTION	COUNTY	TOTAL SHEETS	SHEET NO.
2843	2006-022 RS	COOK	48	1
FED. ROAD DIST. NO.	ILLINOIS	CONTRACT NO. 60B57		

D-91-370-06



LOCATION OF SECTION INDICATED THUS: —



PROJECT ENDS:
STATION 71+34.4

PROJECT BEGINS:
STATION 14+85.5



TRAFFIC DATA
2006 ADT = 17,700
POSTED SPEED = 25 TO 35 MPH

J.U.L.I.E.
JOINT UTILITY LOCATION INFORMATION FOR EXCAVATION
1-800-892-0123
OR 811

PROJECT ENGINEER – BOB BORO (847) 705-4178
PROJECT MANAGER – KEN ENG

CONTRACT NO. 60B57

GROSS & NET LENGTH OF PROJECT = 5648.9 FEET (1.07 MILE)

STATE OF ILLINOIS
DEPARTMENT OF TRANSPORTATION
DIVISION OF HIGHWAYS

SUBMITTED JANUARY 29, 2009

Diana M. O'Keefe
DEPUTY DIRECTOR OF HIGHWAYS, REGION ENGINEER

March 27, 2009
Charles A. Ingensoll
ENGINEER OF DESIGN AND ENVIRONMENT

March 27, 2009
Christine M. Reed
DIRECTOR OF HIGHWAYS, CHIEF ENGINEER

PRINTED BY THE AUTHORITY
OF THE STATE OF ILLINOIS

INDEX OF SHEETS

STATE STANDARDS

GENERAL NOTES

<u>SHEET NO.</u>	<u>DESCRIPTION</u>
1	TITLE SHEET
2	INDEX OF SHEETS, STATE STANDARDS & GENERAL NOTES.
3	SUMMARY OF QUANTITIES
4-5	EXISTING AND PROPOSED TYPICAL SECTIONS
6-8	ROADWAY AND PAVEMENT MARKING PLANS
9-11	DETECTOR LOOP REPLACEMENT
12	DETAILS FOR FRAMES AND LIDS ADJUSTMENT WITH MILLING
13	PAVEMENT PATCHING FOR HMA SURFACED PAVEMENT
14	CURB OR CURB AND GUTTER REMOVAL AND REPLACEMENT
15	BUTT JOINT AND HMA TAPER DETAILS
16	HMA TAPER AT EDGE OF PCC PAVEMENT
17	TRAFFIC CONTROL AND PROTECTION FOR SIDE ROADS, INTERSECTIONS AND DRIVEWAYS
18	TYPICAL APPLICATIONS: RAISED REFLECTIVE PAVEMENT MARKERS (SNOW-PLOW RESISTANT)
19	DISTRICT ONE TYPICAL PAVEMENT MARKINGS
20	TRAFFIC CONTROL AND PROTECTION OF TURN BAYS (TO REMAIN OPEN TO TRAFFIC)
21	PAVEMENT MARKING LETTERS AND SYMBOLS FOR TRAFFIC STAGING
22	ARTERIAL ROAD INFORMATION SIGN

<u>STANDARD NO.</u>	<u>DESCRIPTION</u>
442201-03	CLASS C AND D PATCHES
701301-03	LANE CLOSURE, 2L, 2W, SHORT TIME OPERATIONS
701501-05	URBAN LANE CLOSURE, 2L, 2W, UNDIVIDED
701606-06	URBAN LANE CLOSURE, MULTILANE, 2W WITH MOUNTABLE MEDIAN
701701-06	URBAN LANE CLOSURE, MULTILANE INTERSECTION
701901-01	TRAFFIC CONTROL DEVICES

BEFORE STARTING ANY EXCAVATION, THE CONTRACTOR SHALL CALL "JULIE" AT (800) 892-0123 OR 811 FOR FIELD LOCATIONS OF BURIED ELECTRIC, TELEPHONE, AND GAS FACILITIES. (48 HOUR NOTIFICATION REQUIRED)

THE CONTRACTOR SHALL COORDINATE CONSTRUCTION ACTIVITIES WITH UTILITY COMPANIES AND THE VILLAGE OF HOMEWOOD.

THE CONTRACTOR WILL NOT BE ABLE TO SET UP A YARD OR FIELD OFFICE ON STATE PROPERTY WITHOUT THE WRITTEN PERMISSION OF THE DEPARTMENT.

BUTT JOINTS WILL BE INSTALLED AT THE ENDS OF RESURFACING (WHERE RESURFACING MEETS EXISTING PAVEMENT) IN ACCORDANCE WITH THE "BUTT JOINT AND HMA TAPER DETAILS" SHEET INCLUDED IN THE PLANS UNLESS OTHERWISE SPECIFIED.

THE RESIDENT ENGINEER SHALL CONTACT MS. PATRICE HARRIS, AREA TRAFFIC FIELD ENGINEER, AT (708) 597-9800 A MINIMUM OF TWO WEEKS PRIOR TO PLACEMENT OF FINAL PAVEMENT MARKINGS.

WHEN MILLED PAVEMENT IS OPEN TO TRAFFIC, THE MAXIMUM GRADE DIFFERENTIAL BETWEEN PASSES OF THE MILLING MACHINE SHALL NOT EXCEED 1 1/2 INCHES WHERE THE SPEED LIMIT IS 45 MPH OR LESS, AND 1 INCH WHERE THE SPEED LIMIT IS 45 MPH. WITH WRITTEN APPROVAL FROM THE RESIDENT ENGINEER, A MAXIMUM GRADE DIFFERENTIAL OF 3 INCHES MAY BE ALLOWED IF THE EDGE OF THE MILLING IS SLOPED A MINIMUM OF 1:3 (V:H)

THE CONTRACTOR SHALL CONTACT THE TRAFFIC CONTROL SUPERVISOR AT (847) 705-4470 A MINIMUM OF 72 HOURS IN ADVANCE OF BEGINNING WORK.

ANY PAVEMENT MARKINGS AND RAISED REFLECTIVE PAVEMENT MARKERS OBLITERATED BY MILLING AND RESURFACING OPERATIONS ON SIDE STREETS AND ENTRANCES SHALL BE REPLACED AND PAID FOR IN KIND

ALL DAMAGE TO EXISTING PAVEMENT MARKINGS OR RAISED REFLECTIVE PAVEMENT MARKERS OUTSIDE THE REMOVAL LINE SHOWN ON THE PLANS SHALL BE REPLACED AT NO ADDITIONAL COST TO THE DEPARTMENT.

BEFORE BEGINNING ANY WORK, THE CONTRACTOR SHALL RETAIN AND RECORD FOR FUTURE REFERENCE, ALL EXISTING PAVEMENT MARKING LINES (AND RAISED REFLECTIVE PAVEMENT MARKERS) IN ORDER THAT THESE LOCATIONS CAN BE RE-ESTABLISHED FOR STRIPING. EXACT LOCATIONS OF ALL PAVEMENT MARKINGS SHALL BE AS DIRECTED BY THE ENGINEER.

ALL PAVEMENT PATCHING LOCATIONS WILL BE DETERMINED IN THE FIELD BY THE ENGINEER.

DRAINAGE ADJUSTMENT OR RECONSTRUCTION LOCATIONS WILL BE DETERMINED IN THE FIELD BY THE ENGINEER.

IT SHALL BE THE CONTRACTOR'S RESPONSIBILITY TO VERIFY ALL DIMENSIONS AND CONDITIONS EXISTING IN THE FIELD PRIOR TO CONSTRUCTION AND ORDERING OF MATERIALS.

THE CONTRACTOR SHALL BE REQUIRED TO PROVIDE ACCESS TO ABUTTING PROPERTY AT ALL TIMES DURING THE CONSTRUCTION OF THIS PROJECT.

DO NOT SCALE PLANS FOR CONSTRUCTION DIMENSIONS.

DOUBLE LANE MARKERS ARE TO BE USED AS SHOWN ON THE DISTRICT ONE DETAIL "TYPICAL APPLICATIONS - RAISED REFLECTIVE PAVEMENT MARKERS (SNOW-PLOW RESISTANT)" SHOWN IN THE PLANS.

PAVEMENT MARKING TAPE, TYPE III SHALL BE USED FOR SHORT TERM PAVEMENT MARKINGS ON ALL FINAL SURFACES. THE COST OF THE PAVEMENT MARKING TAPE, TYPE III AND ITS REMOVAL SHALL BE INCLUDED IN THE COST OF SHORT TERM PAVEMENT MARKING.

FILE NAME =	USER NAME = midyja	DESIGNED -	REVISED -	STATE OF ILLINOIS DEPARTMENT OF TRANSPORTATION	DIXIE HIGHWAY INDEX OF SHEETS, STATE STANDARDS AND GENERAL NOTES			F.A.U. RTE. 2843	SECTION 2006-022 RS	COUNTY COOK	TOTAL SHEETS 22	SHEET NO. 2
ct:\pwork\NPI\DOT\MIDYJA\dms92647\shur...		DRAWN -	REVISED -									
		CHECKED -	REVISED -									
		DATE -	REVISED -									
	PLOT SCALE = 50.0000' / IN.						SCALE:	SHEET NO. OF SHEETS	STA.	TO STA.	CONTRACT NO. 60B57	
	PLOT DATE = 2/4/2009										FED. ROAD DIST. NO. 1 ILLINOIS FED. AID PROJECT	

F.A.U. RTE. 2843	SECTION 2006-022 RS	COUNTY COOK	TOTAL SHEETS 22	SHEET NO. 3
FED. ROAD DIST. NO. 1		ILLINOIS	HIGHWAY PROJECT	
D-91-376-06				

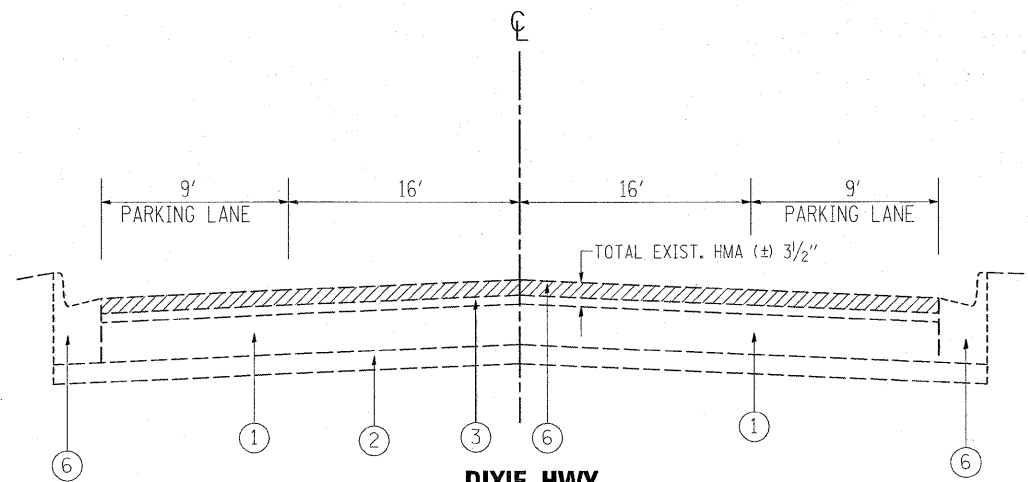
SUMMARY OF QUANTITIES				CONSTRUCTION TYPE CODE				SUMMARY OF QUANTITIES				CONSTRUCTION TYPE CODE					
CODE NO	ITEM	UNIT	URBAN 100% FED.	1000						UNIT	URBAN 100% FED.	1000					
			TOTAL QUANTITIES								TOTAL QUANTITIES						
40600200	BITUMINOUS MATERIALS (PRIME COAT)	TON	24	24													
40600300	AGGREGATE (PRIME COAT)	TON	123	123													
40600400	MIXTURE FOR CRACKS, JOINTS, AND FLANGEWAYS	TON	12	12													
40600895	CONSTRUCTING TEST STRIP	EACH	1	1													
40600982	HOT-MIX ASPHALT SURFACE REMOVAL - BUTT JOINT	SO YD	568	568													
40600985	PORTLAND CEMENT CONCRETE SURFACE REMOVAL - BUTT JOINT	SO YD	227	227													
40601005	HOT-MIX ASPHALT REPLACEMENT OVER PATCHES	TON	58.8	58.8													
40603340	HOT-MIX ASPHALT SURFACE COURSE, MIX "D", N70	TON	2580	2580													
42400200	PORTLAND CEMENT CONCRETE SIDEWALK 5 INCH	SO FT	30	30													
44000158	HOT-MIX ASPHALT SURFACE REMOVAL, 2 1/4"	SO YD	28027	28027													
44000600	SIDEWALK REMOVAL	SO FT	30	30													
44001700	COMBINATION CONCRETE CURB AND GUTTER REMOVAL AND REPLACEMENT	FOOT	61	61													
44002214	HOT-MIX ASPHALT REMOVAL OVER PATCHES, 3 1/2"	SO YD	300	300													
44200970	CLASS B PATCHES, TYPE II, 10 INCH	SO YD	85.3	85.3													
44201741	CLASS D PATCHES, TYPE II, 8 INCH	SO YD	246.6	246.6													
44201747	CLASS D PATCHES, TYPE IV, 8 INCH	SO YD	106.3	106.3													
44213200	SAW CUTS	FOOT	432	432													
60300105	FRAMES AND GRATES TO BE ADJUSTED	EACH	8	8													
60300310	FRAMES AND LIDS TO BE ADJUSTED (SPECIAL)	EACH	92	92													
60404900	FRAMES AND GRATES, TYPE 12	EACH	3	3													
60406000	FRAMES AND LIDS, TYPE 1, OPEN LID	EACH	2	2													
60406100	FRAMES AND LIDS, TYPE 1, CLOSED LID	EACH	14	14													
67000400	ENGINEER'S FIELD OFFICE, TYPE A	CAL MO	4	4													
67100100	MOBILIZATION	L SUM	1	1													
70102620	TRAFFIC CONTROL AND PROTECTION, STANDARD 701501	L SUM	1	1													
70102625	TRAFFIC CONTROL AND PROTECTION, STANDARD 701606	L SUM	1	1													
70102635	TRAFFIC CONTROL AND PROTECTION, STANDARD 701701	L SUM	1	1													
70300100	SHORT-TERM PAVEMENT MARKING	FOOT	10170	10170													
70300210	TEMPORARY PAVEMENT MARKING - LETTERS AND SYMBOLS	SO FT	319.4	319.4													
70300220	TEMPORARY PAVEMENT MARKING - LINE 4"	FOOT	14182	14182													
70300240	TEMPORARY PAVEMENT MARKING - LINE 6"	FOOT	2997	2997													
70300260	TEMPORARY PAVEMENT MARKING - LINE 12"	FOOT	1143	1143													
70300280	TEMPORARY PAVEMENT MARKING - LINE 24"	FOOT	327	327													
* 78000100	THERMOPLASTIC PAVEMENT MARKING - LETTERS AND SYMBOLS	SO FT	319.4	319.4													
* 78000200	THERMOPLASTIC PAVEMENT MARKING - LINE 4"	FOOT	14182	14182													
* 78000400	THERMOPLASTIC PAVEMENT MARKING - LINE 6"	FOOT	2997	2997													
* 78000600	THERMOPLASTIC PAVEMENT MARKING - LINE 12"	FOOT	1143	1143													
* 78000650	THERMOPLASTIC PAVEMENT MARKING - LINE 24"	FOOT	327	327													
* 78100100	RAISED REFLECTIVE PAVEMENT MARKER	EACH	404	404													
* 78300200	RAISED REFLECTIVE PAVEMENT MARKER REMOVAL	EACH	253	253													
* 88600600	DETECTOR LOOP REPLACEMENT	FOOT	1420	1420													
X0322256	TEMPORARY INFORMATION SIGNING	SO FT	102.8	102.8													
X4067107	POLYMERIZED LEVELING BINDER (MACHINE METHOD), IL-4.75, N50	TON	1170	1170													
X4400100	PORTLAND CEMENT CONCRETE SURFACE REMOVAL (VARIABLE DEPTH)	SO YD	875	875													
Z0017100	DOWEL BARS	EACH	168	168													
NP Z0018500	DRAINAGE STRUCTURES TO BE CLEANED	EACH	100	100													
Z0018600	DRAINAGE STRUCTURES TO BE RECONSTRUCTED	EACH	4	4													
Z0048665	RAILROAD PROTECTIVE LIABILITY INSURANCE	L SUM	1	1													

* SPECIALITY ITEMS
NP= Non-participating

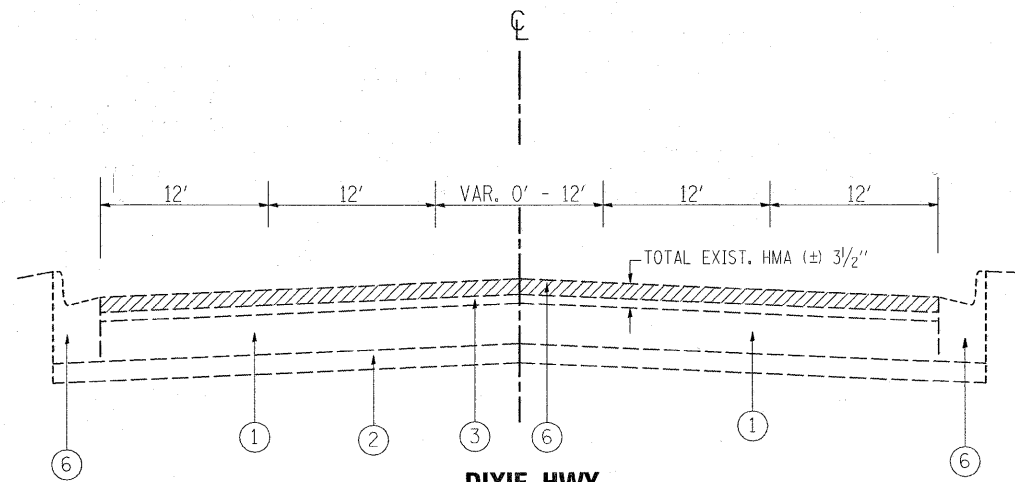
REVISIONS	
NAME	DATE

ILLINOIS DEPARTMENT OF TRANSPORTATION
SUMMARY OF QUANTITIES

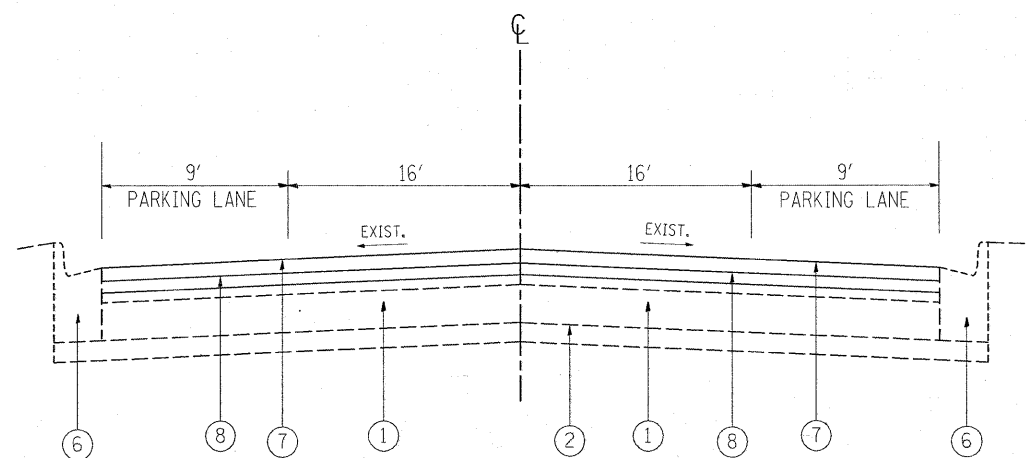
2/5/2009 2:55:58 PM C:\pwworking\Illinois\60857\60857.dwg



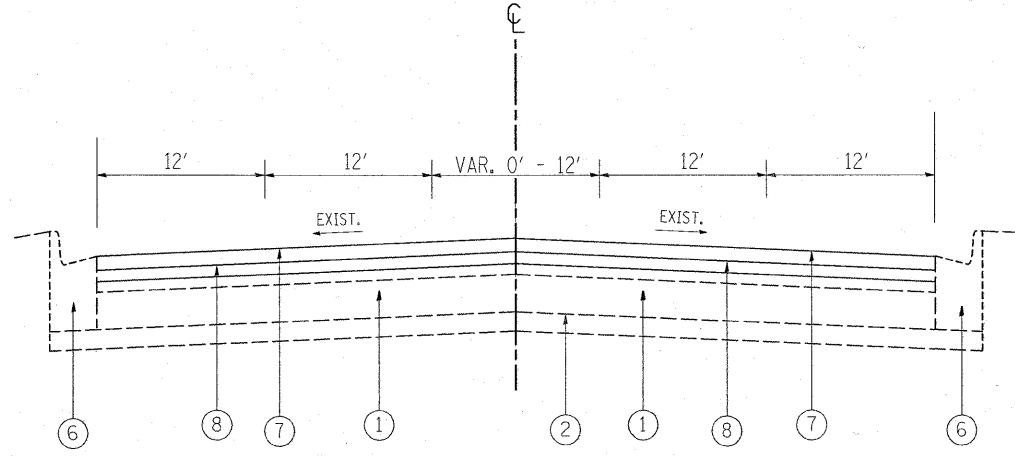
**DIXIE HWY
EXIST. TYPICAL SECTION**
STA. 14+85.5 TO STA. 39+30



**DIXIE HWY
EXIST. TYPICAL SECTION**
STA. 47+17 TO STA. 71+34.4



**DIXIE HWY
EXIST. TYPICAL SECTION**
STA. 14+85.5 TO STA. 39+30



**DIXIE HWY
PROP. TYPICAL SECTION**
STA. 47+17 TO STA. 71+34.4

LEGEND

- ① EXIST. PCC BASE COURSE, 8"(\pm)
- ② EXIST. STABILIZED SUB-BASE, 4"
- ③ EXIST. REMAINING HMA AFTER MILLING, 1/4"(\pm)
- ④ EXIST. COMBINATION CONCRETE CURB & GUTTER TYPE B-6.12
- ⑤ PROP. PORTLAND CEMENT CONCRETE SURFACE REMOVAL, (VARIABLE DEPTH) (0" TO 1/4")
- ⑥ PROP. HOT-MIX ASPHALT SURFACE REMOVAL - 2 1/4"
- ⑦ PROP. HOT-MIX ASPHALT SURFACE COURSE, MIX "D", N70, 1/2"
- ⑧ PROP. POLYMERIZED LEVELING BINDER (MM), IL-4.75, N50, 3/4"
- ⑨ PROP. POLYMERIZED LEVELING BINDER (MM), IL-4.75, N50, 1"

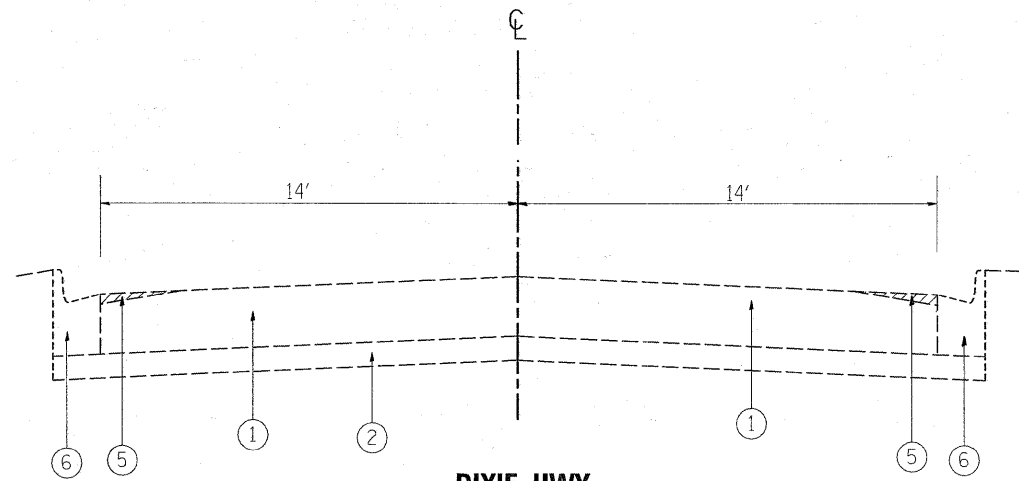
NOTE: CONTRACTOR SHALL PATCH FIRST BEFORE MILLING

HOT-MIX ASPHALT MIXTURE REQUIREMENTS

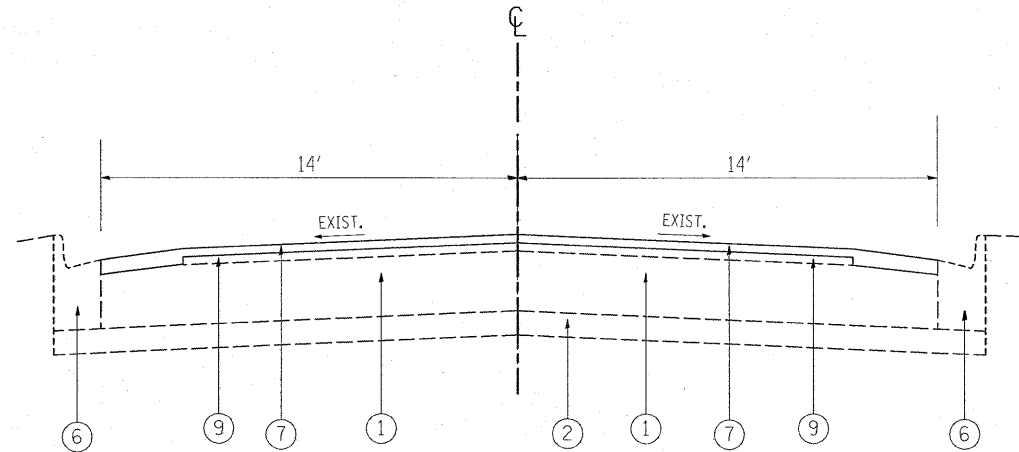
	MIXTURE TYPE	AC TYPE	AIR VOIDS
RESURFACING	HOT-MIX ASPHALT SURFACE COURSE, MIX "D", N70 (IL 9.5 mm)	PG 64-22	4% @ 70 GYR
	POLYMERIZED LEVELING BINDER, (MM), IL-4.75, N50	SBS/SBR PG 76-28/-22	4% @ 50 GYR
PATCHES	CLASS D PATCHES, (HMA BINDER IL-19 mm)	PG 64-22*	4% @ 70 GYR

THE UNIT WEIGHT USED TO CALCULATE ALL HOT-MIX ASPHALT SURFACE MIXTURE QUANTITIES IS 112 LBS/SQYD/IN.

*WHEN RAP EXCEEDS 20%, THE NEW ASPHALT BINDER IN THE MIX SHALL BE PG 58-22



**DIXIE HWY
EXIST. TYPICAL SECTION**
STA. 39+30 TO STA. 47+17

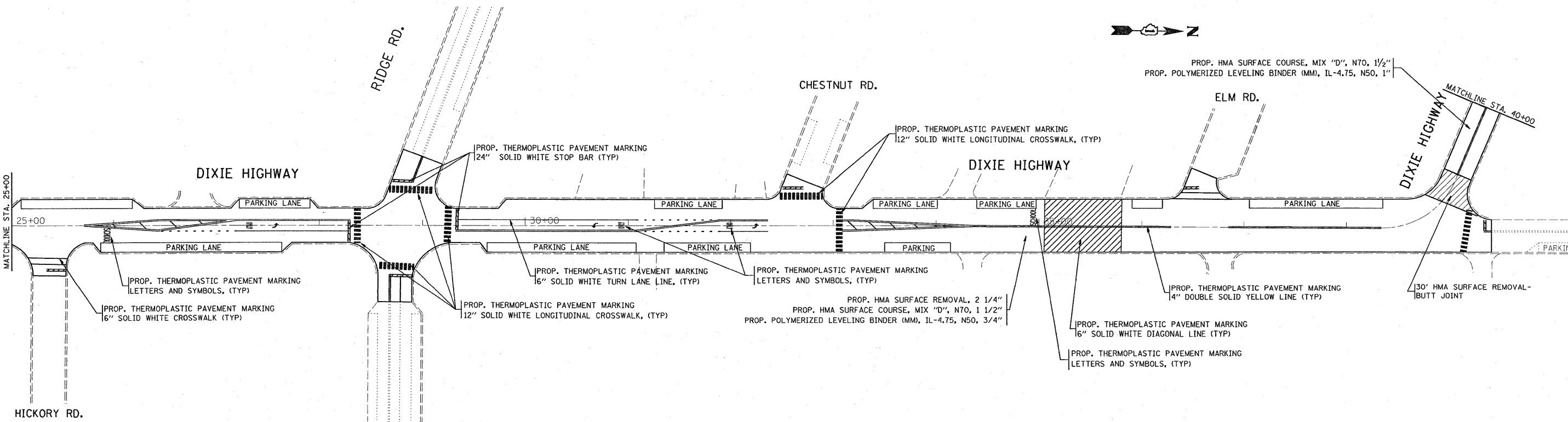
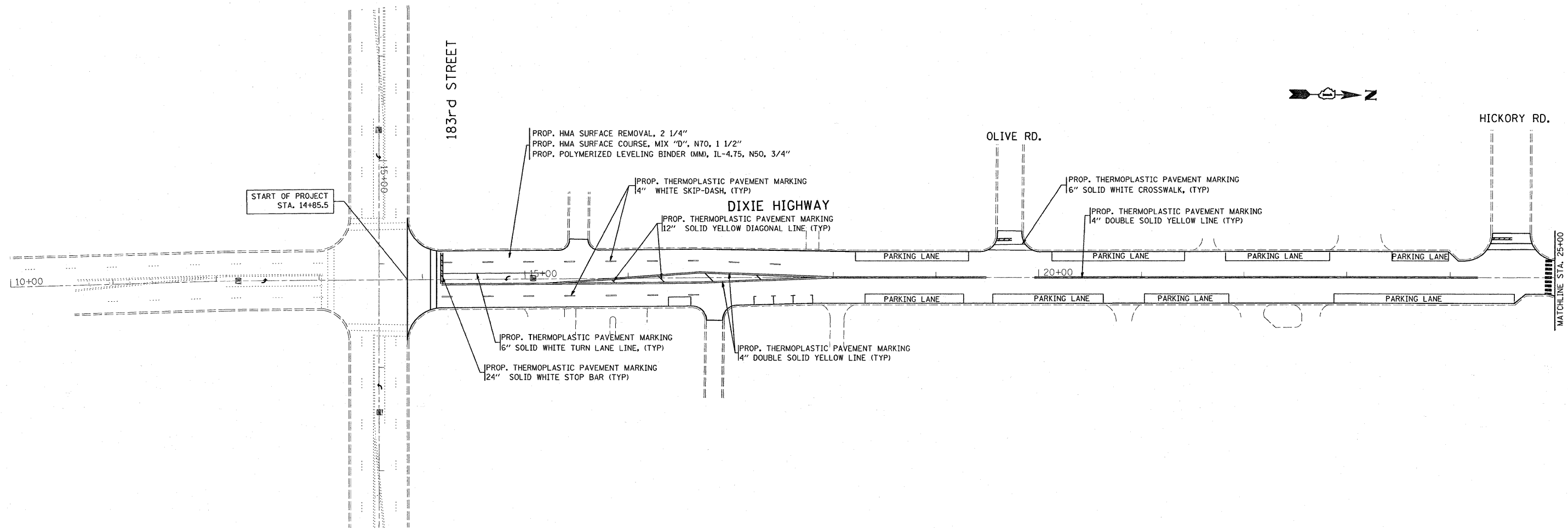


**DIXIE HWY
PROP. TYPICAL SECTION**
STA. 39+30 TO STA. 47+17

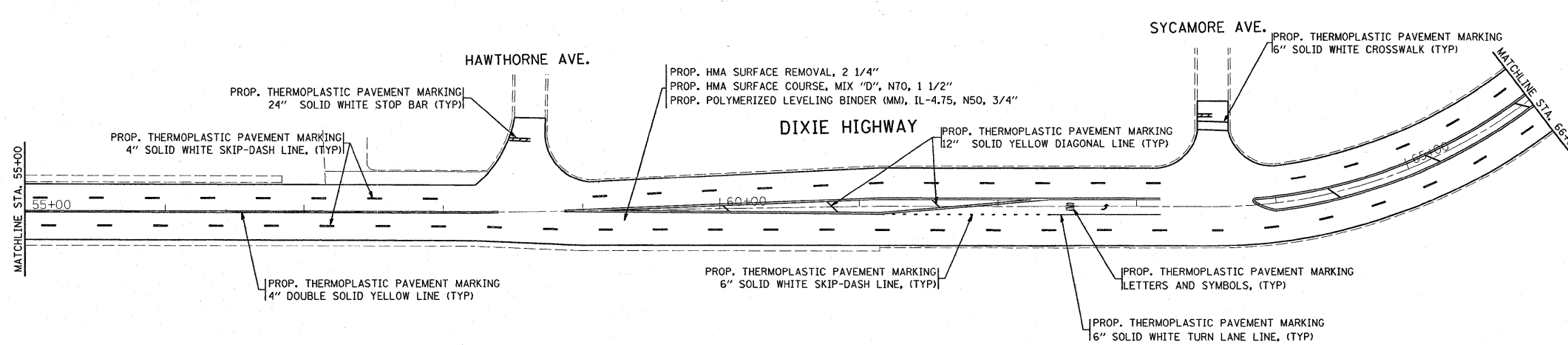
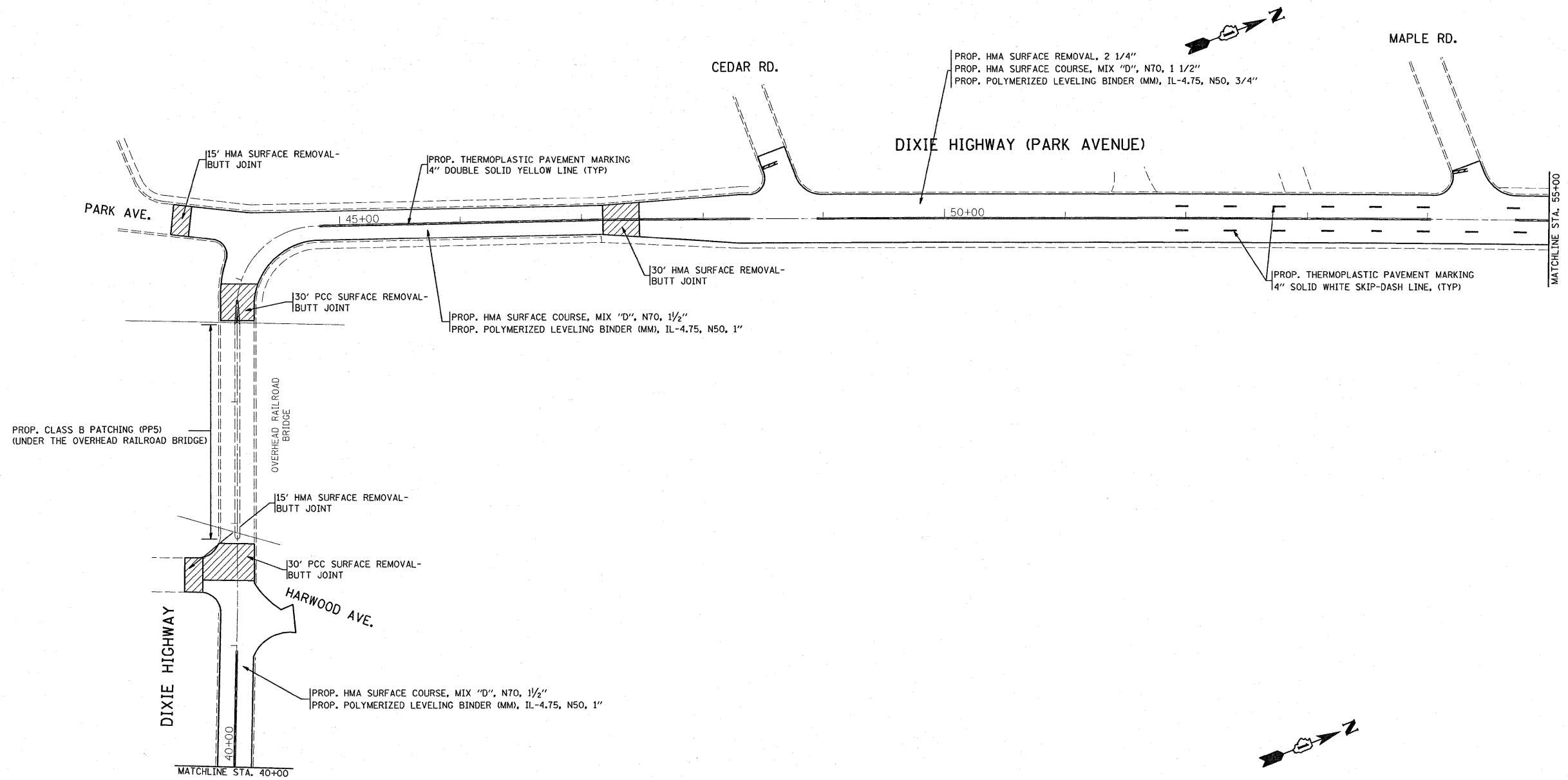
LEGEND

- ① EXIST. PCC BASE COURSE, 8"(\pm)
- ② EXIST. STABILIZED SUB-BASE, 4"
- ③ EXIST. REMAINING HMA AFTER MILLING, 1/4"(\pm)
- ④ EXIST. COMBINATION CONCRETE CURB & GUTTER TYPE B-6.12
- ⑤ PROP. PORTLAND CEMENT CONCRETE SURFACE REMOVAL, (VARIABLE DEPTH) (0" TO 1/4")
- ⑥ PROP. HOT-MIX ASPHALT SURFACE REMOVAL - 2/4"
- ⑦ PROP. HOT-MIX ASPHALT SURFACE COURSE, MIX "D", N70, 1/2"
- ⑧ PROP. POLYMERIZED LEVELING BINDER (MM), IL-4.75, N50, 3/4"
- ⑨ PROP. POLYMERIZED LEVELING BINDER (MM), IL-4.75, N50, 1"

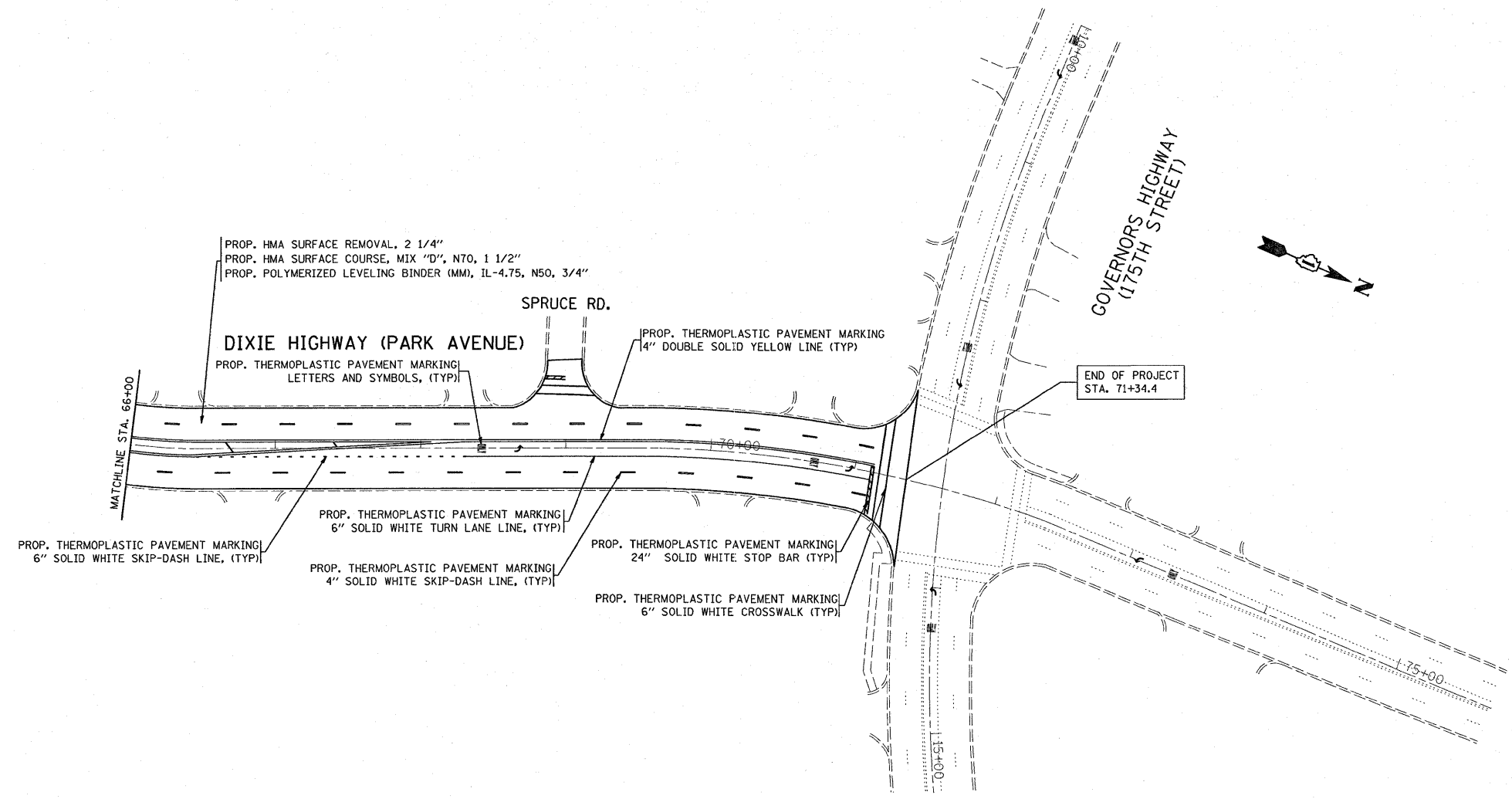
FILE NAME =	USER NAME = midyja	DESIGNED -	REVISED -	STATE OF ILLINOIS DEPARTMENT OF TRANSPORTATION	120815 SHEET TYPICAL SECTIONS	F.A.U. RTE.	SECTION	COUNTY	TOTAL SHEETS	SHEET NO.	
ct:\pw_work\pwwork\midyja\dms92647\sh_rdn.dgn		DRAWN -	REVISED -			2843	2006-022 RS	COOK	22	5	
PLOT SCALE = 50.0000' / IN.		CHECKED -	REVISED -			CONTRACT NO. 60B57					
PLOT DATE = 2/2/2009		DATE -	REVISED -			FED. ROAD DIST. NO. 1 ILLINOIS FED. AID PROJECT					
					SCALE:	SHEET NO.	OF	SHEETS	STA.	TO STA.	



FILE NAME = c:\pw_work\VP\WIDOT\MIDYJA\dms92647\sh...dgn	USER NAME = mdyja	DESIGNED -	REVISED -	STATE OF ILLINOIS DEPARTMENT OF TRANSPORTATION	ROADWAY AND PAVEMENT MARKING PLAN DIXIE HWY (183rd ST. - GOVERNORS HWY)	F.A.U. RTE. 2843	SECTION 2006-022 RS	COUNTY COOK	TOTAL SHEETS 22	SHEET NO. 6
	PLOT SCALE = 50.0000' / IN.	CHECKED -	REVISED -			SCALE: 1"=50'	SHEET NO. 1 OF 3 SHEETS	STA. 10+00 TO STA. 40+00	CONTRACT NO. 60B57	
PLOT DATE = 2/4/2009	DATE -	REVISED -	REVISED -	FED. ROAD DIST. NO. 1 ILLINOIS FED. AID PROJECT						



FILE NAME =	USER NAME = msdjjo	DESIGNED -	REVISED -	STATE OF ILLINOIS DEPARTMENT OF TRANSPORTATION	ROADWAY AND PAVEMENT MARKING PLAN DIXIE HWY (183rd ST. - GOVERNORS HWY)	F.A.U. RTE.	SECTION	COUNTY	TOTAL SHEETS	SHEET NO.	
c:\pw\work\pwr\dots\msdjjo\dms92647\sh_rdn		DRAWN -	REVISED -			2843	2006-022 RS	COOK	22	7	
	PLOT SCALE = 50,000.00 ' / IN.	CHECKED -	REVISED -			CONTRACT NO. 60B57					
	PLOT DATE = 2/2/2009	DATE -	REVISED -			FED. ROAD DIST. NO. 1 ILLINOIS FED. AID PROJECT					
					SCALE: 1"=50'	SHEET NO. 2 OF 3 SHEETS		STA. 40+00 TO STA. 66+00			



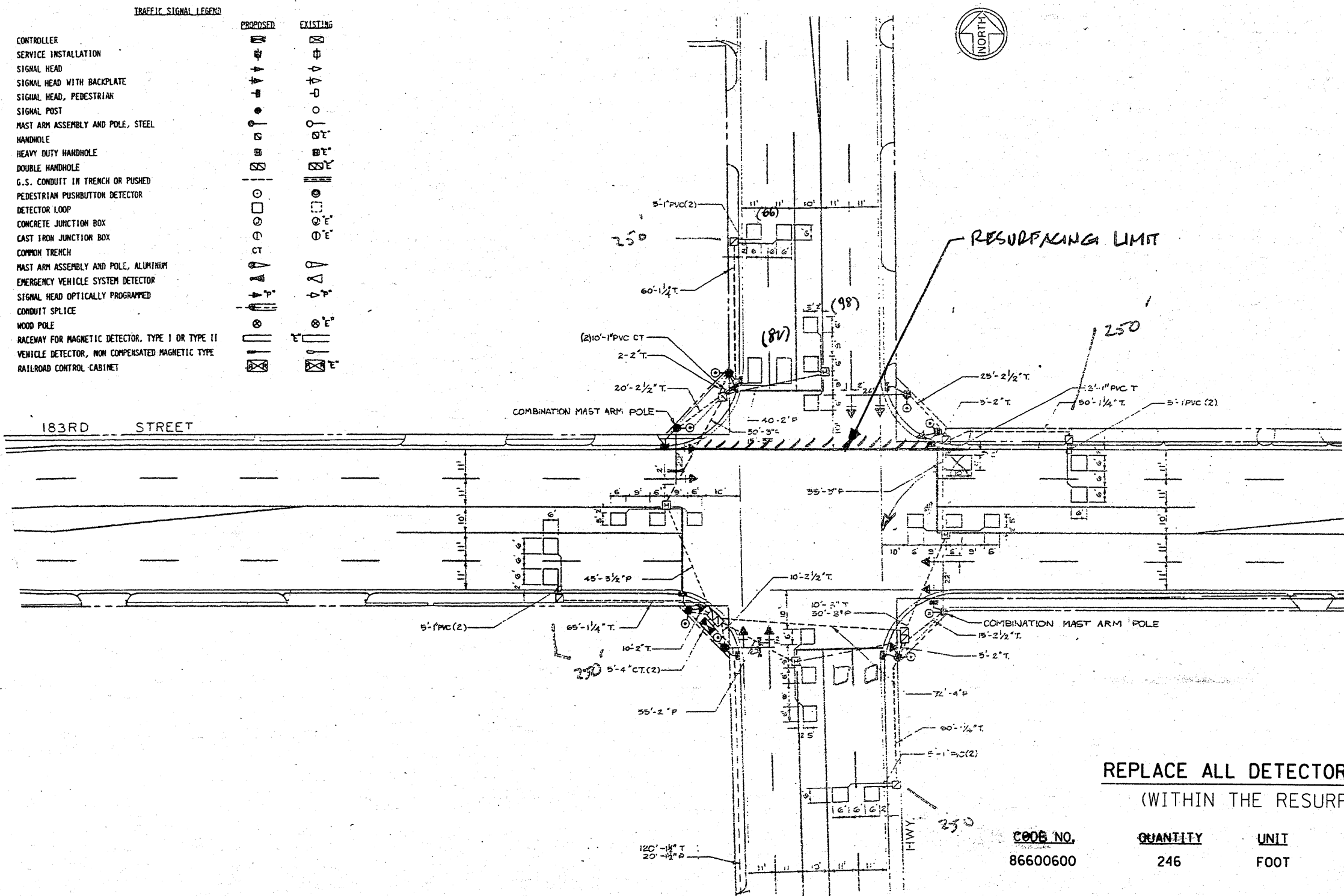
FILE NAME =	USER NAME = mdyja	DESIGNED -	REVISED -	STATE OF ILLINOIS DEPARTMENT OF TRANSPORTATION	ROADWAY AND PAVEMENT MARKING PLAN DIXIE HWY (183rd ST. - GOVERNORS HWY)	F.A.U. RTE.	SECTION	COUNTY	TOTAL SHEETS	SHEET NO.	
c:\pw_work\pawdot\mdyja\dms92647\sh_rdn.dgn		DRAWN -	REVISED -			2843	2006-022 RS	COOK	22	8	
		CHECKED -	REVISED -			CONTRACT NO. 60B57					
		DATE -	REVISED -			SCALE: 1"=50'	SHEET NO. 3 OF 3 SHEETS	STA. 66+00 TO STA. 75+00	FED. ROAD DIST. NO. 1 ILLINOIS FED. AID PROJECT		

RESURFACING - TRAFFIC SIGNAL SCHEDULE OF QUANTITIES

The "Pay Items" below are paid separately as per the attached "Specification" for MAGNETIC DETECTOR REMOVAL AND DETECTOR LOOP INSTALLATION.

Code No.	Pay Item	Unit	Quantity
85000200	MAINTENANCE OF EXISTING TRAFFIC SIGNAL INSTALLATION	EACH	
87301305	ELECTRIC CABLE IN CONDUIT, LEAD-IN, NO. 14 1 PAIR	FOOT	
88500100	INDUCTIVE LOOP DETECTOR	EACH	
88600100	DETECTOR LOOP, TYPE 1	FOOT	

NOTE:
THIS PLAN IS FOR THE PURPOSE OF REPLACING THE DETECTOR LOOPS ONLY. ALL OTHER INFORMATION SHOWN IS NOT RELATED AND WILL BE DISREGARDED.



REPLACE ALL DETECTOR LOOPS AS SHOWN
(WITHIN THE RESURFACING LIMITS)

CODE NO.	QUANTITY	UNIT	ITEM
86600600	246	FOOT	DETECTOR LOOP REPLACEMENT

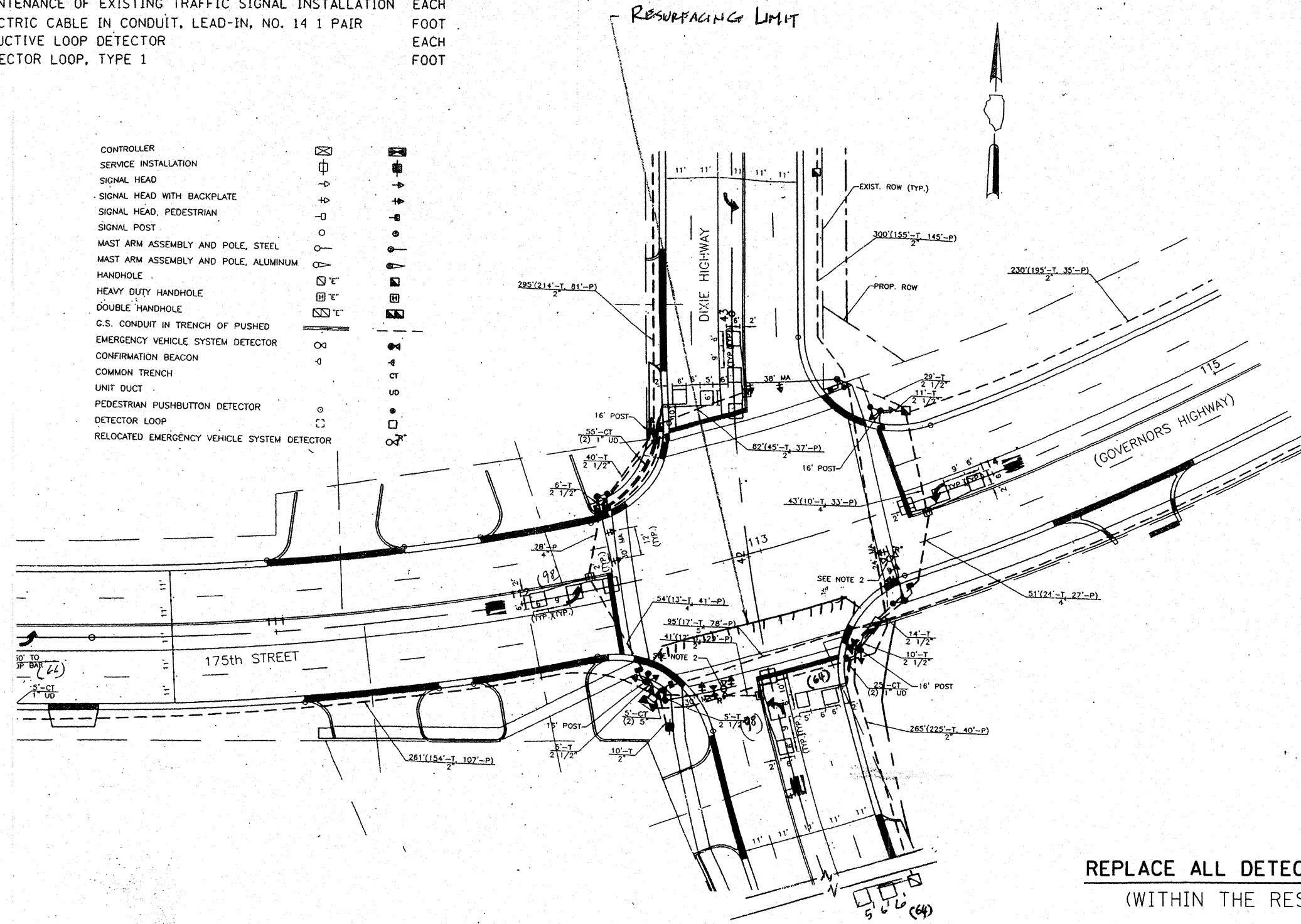
FILE NAME =	USER NAME = midyja	DESIGNED -	REVISED -	STATE OF ILLINOIS DEPARTMENT OF TRANSPORTATION	DETECTOR LOOP REPLACEMENT DIXIE HIGHWAY @ 183RD ST.	F.A.U. RTE.	SECTION	COUNTY	TOTAL SHEETS	SHEET NO.	
ct:\pwork\pvidot\midyja\dms92647\sh_r.dgn	PLOT SCALE = 1/8" = 1' IN.	DRAWN -	REVISED -			2743	2006-022 RS	COOK	22	10	
	PLOT DATE = 2/2/2009	CHECKED -	REVISED -			CONTRACT NO. 60B57					
		DATE -	REVISED -			ILLINOIS/FED. AID PROJECT					
					SCALE:	SHEET NO.	OF	SHEETS	STA.	TO STA.	

RESURFACING - TRAFFIC SIGNAL SCHEDULE OF QUANTITIES

The "Pay Items" below are paid separately as per the attached "Specification" for MAGNETIC DETECTOR REMOVAL AND DETECTOR LOOP INSTALLATION.

Code No.	Pay Item	Unit	Quantity
85000200	MAINTENANCE OF EXISTING TRAFFIC SIGNAL INSTALLATION	EACH	
87301305	ELECTRIC CABLE IN CONDUIT, LEAD-IN, NO. 14 1 PAIR	FOOT	
88500100	INDUCTIVE LOOP DETECTOR	EACH	
88600100	DETECTOR LOOP, TYPE 1	FOOT	

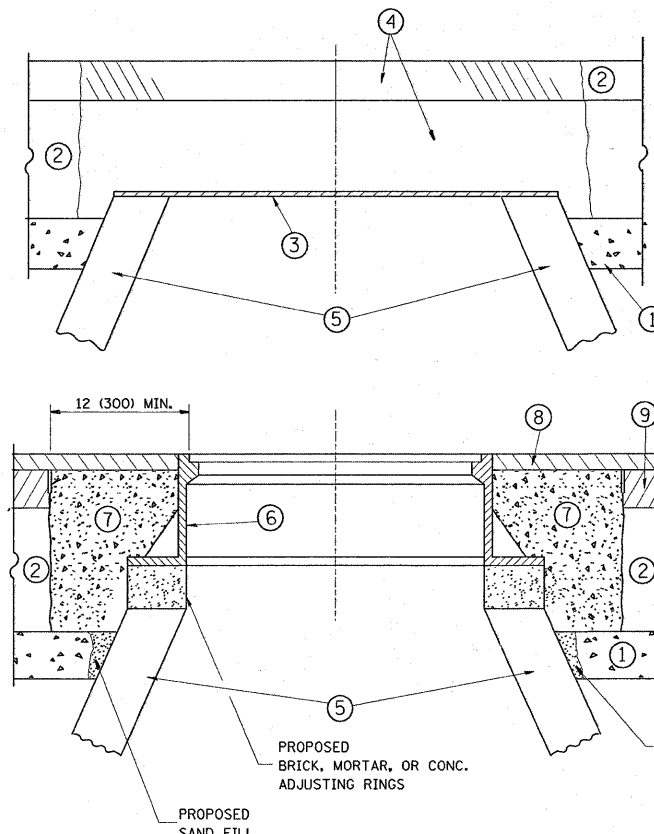
NOTE:
THIS PLAN IS FOR THE PURPOSE OF REPLACING THE DETECTOR LOOPS ONLY. ALL OTHER INFORMATION SHOWN IS NOT RELATED AND WILL BE DISREGARDED.



- CONTROLLER
- SERVICE INSTALLATION
- SIGNAL HEAD
- SIGNAL HEAD WITH BACKPLATE
- SIGNAL HEAD, PEDESTRIAN
- SIGNAL POST
- MAST ARM ASSEMBLY AND POLE, STEEL
- MAST ARM ASSEMBLY AND POLE, ALUMINUM
- HANDHOLE
- HEAVY DUTY HANDHOLE
- DOUBLE HANDHOLE
- G.S. CONDUIT IN TRENCH OF PUSHED
- EMERGENCY VEHICLE SYSTEM DETECTOR
- CONFIRMATION BEACON
- COMMON TRENCH
- UNIT DUCT
- PEDESTRIAN PUSHBUTTON DETECTOR
- DETECTOR LOOP
- RELOCATED EMERGENCY VEHICLE SYSTEM DETECTOR

REPLACE ALL DETECTOR LOOPS AS SHOWN
(WITHIN THE RESURFACING LIMITS)

CODE NO.	QUANTITY	UNIT	ITEM
86600600	226	FOOT	DETECTOR LOOP REPLACEMENT



CONSTRUCTION PROCEDURES

STAGE 1 (BEFORE PAVEMENT MILLING)

- A) REMOVE A MINIMUM OF 12 (300) OF THE PAVEMENT FROM AROUND THE STRUCTURE.
- B) REMOVE THE EXISTING FRAME AND LID FROM THE STRUCTURE.
- C) COVER THE STRUCTURE OPENING WITH A 36 (900) DIAMETER METAL PLATE.
- D) BACKFILL WITH CRUSHED STONE AND A MINIMUM 1 1/2 (40) THICK HMA SURFACE MIX APPROVED BY THE ENGINEER.

STAGE 2 (AFTER PAVEMENT MILLING)

- A) REMOVE THE HMA SURFACE MIX AND CRUSHED STONE.
- B) INSTALL THE FRAME AND LID; ADJUST THE FRAME TO ITS FINAL SURFACE ELEVATION.
- C) THE SURROUNDING SPACE SHALL BE FILLED WITH CLASS SI CONCRETE, OR HMA SURFACE COURSE OR HMA BINDER COURSE TO THE ELEVATION OF THE SURFACE OF THE EXISTING BASE COURSE OR THE BINDER COURSE.

THE PROCEDURE EXPLAINED ABOVE SHALL CONFORM TO THE APPLICABLE PORTIONS OF SECTIONS 353, 406, 602, AND 603 OF THE STANDARD SPECIFICATIONS.

LEGEND

- ① SUB-BASE GRANULAR MATERIAL
- ② EXISTING PAVEMENT
- ③ 36 (900) DIAMETER METAL PLATE
- ④ PROPOSED CRUSHED STONE AND HMA SURFACE MIX
- ⑤ EXISTING STRUCTURE
- ⑥ FRAME AND LID (SEE NOTES)
- ⑦ CLASS SI CONCRETE, HMA SURFACE COURSE OR HMA BINDER COURSE
- ⑧ PROPOSED HMA SURFACE COURSE
- ⑨ PROPOSED HMA BINDER COURSE

NOTES:

EXISTING BROKEN FRAMES AND LIDS SHALL BE REMOVED AND DISPOSED OF BY THE CONTRACTOR AND SHALL BE REPLACED AS DIRECTED BY THE ENGINEER. REPLACEMENT FRAMES AND LIDS WILL BE PAID FOR IN ACCORDANCE WITH ARTICLE 109.04 OF THE STANDARD SPECIFICATIONS UNLESS A SEPARATE PAY ITEM HAS BEEN PROVIDED.

IF THE EXISTING LIDS ARE OPEN, THE FRAME WILL BE ADJUSTED TO THE ELEVATION OF THE MILLED PAVEMENT SURFACE PRIOR TO THE MILLING OPERATION. THE FRAME WILL NOT BE REMOVED AND COVERED BY THE METAL PLATE.

CITY OF CHICAGO CASTINGS ARE THE PROPERTY OF THE CITY AND THE CONTRACTOR SHALL NOTIFY THE CITY FOR REMOVAL AND DISPOSITION OF THE CASTINGS.

THE METAL PLATE USED TO COVER THE STRUCTURE SHALL REMAIN THE PROPERTY OF THE CONTRACTOR.

WHEN STRUCTURES ARE TO BE ADJUSTED OR RECONSTRUCTED, THE LOWERING AND RAISING OF THE FRAMES AND LIDS WILL NOT BE PAID FOR SEPARATELY BUT WILL BE INCLUDED IN THE COST OF THE CORRESPONDING PAY ITEM.

LOCATION OF STRUCTURES:

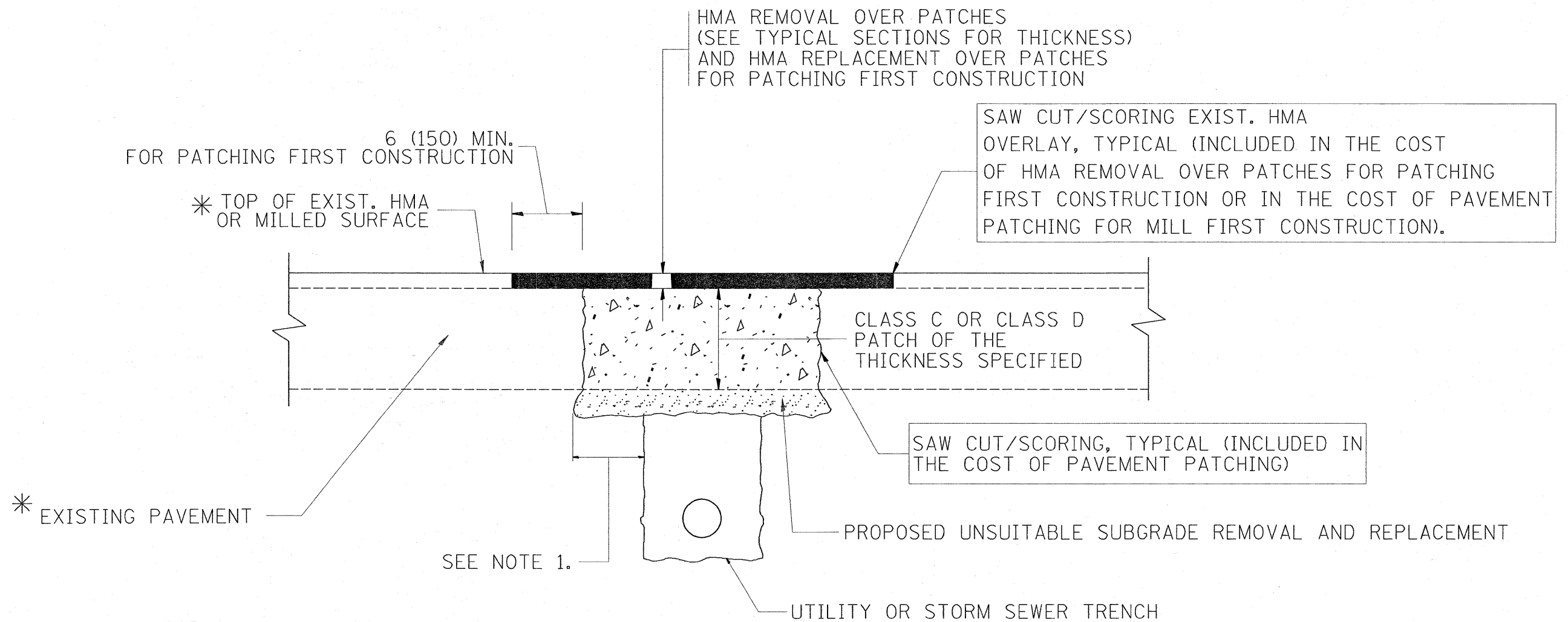
THE CONTRACTOR WILL BE REQUIRED TO KEEP A RECORD OF THE LOCATIONS OF THE BURIED STRUCTURES ACCORDING TO THE STATION AND DISTANCE LEFT OR RIGHT OF THE CENTERLINE OF PAVEMENT. UPON COMPLETION OF THE WORK, THE CONTRACTOR WILL DELIVER THE RECORD TO THE ENGINEER.

BASIS OF PAYMENT: THIS WORK WILL BE PAID FOR AT THE CONTRACT UNIT PRICE PER EACH FOR "FRAMES AND LIDS TO BE ADJUSTED, SPECIAL" NEW FRAMES AND LIDS, WHEN SPECIFIED, WILL BE PAID FOR SEPARATELY.

DETAILS FOR FRAMES AND LIDS ADJUSTMENT WITH MILLING

ALL DIMENSIONS ARE IN INCHES (MILLIMETERS) UNLESS OTHERWISE SHOWN

FILE NAME =	USER NAME = midy_0	DESIGNED - R. SHAH	REVISED - R. SHAH 03-10-95	STATE OF ILLINOIS DEPARTMENT OF TRANSPORTATION	DETAILS FOR FRAMES AND LIDS ADJUSTMENT WITH MILLING	F.A.U. RTE. 2843	SECTION 2006-022 RS	COUNTY COOK	TOTAL SHEETS 22	SHEET NO. 12				
PLT SCALE = 50.0000' / IN.	DRAWN -	REVISED - A. ABBAS 03-21-97	REVISED - R. WIEDEMAN 05-14-04			SCALE: NONE	SHEET NO. 1 OF 1 SHEETS	STA. TO STA.	FED. ROAD DIST. NO. 1 [ILLINOIS] FED. AID PROJECT					
PLT DATE = 2/2/2009	CHECKED -	DATE - 10-25-94	REVISED - R. BORO 01-01-07											
<table border="1" style="width: 100%; border-collapse: collapse;"> <tr> <td colspan="2" style="text-align: center;">BD600-03 (BD-8)</td> <td colspan="2" style="text-align: center;">CONTRACT NO. 60B57</td> </tr> </table>											BD600-03 (BD-8)		CONTRACT NO. 60B57	
BD600-03 (BD-8)		CONTRACT NO. 60B57												



* SEE TYPICAL SECTIONS FOR THICKNESS AND MATERIALS

NOTES:

1. THE WIDTH OF THE FULL DEPTH PATCH OVER A TRENCH SHALL BE 12 (300) WIDER ON EACH SIDE OF THE TRENCH.
2. FOR METHOD OF MEASUREMENT AND BASIS OF PAYMENT, SEE RECURRING SPECIAL PROVISION "PATCHING WITH HOT-MIX ASPHALT OVERLAY REMOVAL".

SEQUENCE OF CONSTRUCTION (PATCHING FIRST)

1. REMOVE THE EXISTING HMA MATERIAL OVER THE AREA TO BE PATCHED.
2. REMOVE AND REPLACE WITH CLASS C OR D PATCH.
3. REPLACE HMA MATERIAL OVER THE AREA TO BE PATCHED.

SEQUENCE OF CONSTRUCTION (MILLING FIRST)

1. MILL HMA FIRST IF THERE IS AT LEAST 4 1/2 INCHES OR MORE OF HMA MATERIAL ON TOP OF THE EXISTING PAVEMENT OR IF THE PAVEMENT IS FULL DEPTH HMA. A MINIMUM OF 2 INCHES OF HMA MATERIAL SHALL BE IN PLACE AFTER MILLING.
2. REMOVE AND REPLACE WITH FULL DEPTH CLASS D PATCHES TO TOP OF MILLED SURFACE.

ALL DIMENSIONS ARE IN INCHES (MILLIMETERS) UNLESS OTHERWISE SHOWN.

FILE NAME =	USER NAME = midyjo	DESIGNED - R. SHAH	REVISED - A. ABBAS 04-27-98	STATE OF ILLINOIS DEPARTMENT OF TRANSPORTATION	PAVEMENT PATCHING FOR HMA SURFACED PAVEMENT	F.A.J. RTE.	SECTION	COUNTY	TOTAL SHEETS	SHEET NO.
ct\pw_work\PWIDGT\MIDYJA\dms92647\Dist3	ed.dgn	DRAWN -	REVISED - R. BORO 01-01-07			2843	2006-022 RS	COOK	22	13
	PLOT SCALE = 50.0000' / IN.	CHECKED -	REVISED - R. BORO 09-04-07			BD400-04 (BD-22)		CONTRACT NO. 60B57		
	PLOT DATE = 2/2/2009	DATE - 10-25-94	REVISED - K. ENG 10-27-08			SCALE: NONE	SHEET NO. 1 OF 1 SHEETS	STA.	TO STA.	

VARIABLE - TO MEET EXISTING DIMENSIONS AND FIELD CONDITIONS (SEE NOTE ②)

PROP. CONC. CURB OR CURB AND GUTTER REPLACEMENT IN ACCORDANCE WITH STATE STANDARD 606001. (SEE NOTE ②)

SAW CUT FULL DEPTH - INCLUDED IN THE COST OF SIDEWALK, DRIVEWAY OR MEDIAN SURFACE REMOVAL PAY ITEM.

SEE STATE STANDARD 606001
EXISTING OR PROPOSED HMA SURFACE (IF APPLICABLE)

18" (450) MAX.

1/4" (5) **

EXISTING SIDEWALK, DRIVEWAY, MEDIAN SURFACE OR GROUND.

PROPOSED SIDEWALK, DRIVEWAY PAVEMENT, MEDIAN SURFACE OR SALT TOLERANT SOD AND TOP SOIL, 4" (100) SOD RESTORATION (SEE NOTE ①).

EXISTING CONCRETE PAVEMENT, CONCRETE BASE COURSE OR FLEXIBLE PAVEMENT

3" (75) MIN.

SUITABLE BACKFILL MATERIAL (INCLUDED IN THE COST OF CURB OR CURB AND GUTTER REMOVAL AND REPLACEMENT)

PROPOSED 3/4" (20) PREFORMED EXPANSION JOINT AT CONCRETE SIDEWALKS, DRIVEWAYS, AND MEDIANS. (INCLUDED IN THE COST OF CURB OR CURB AND GUTTER REMOVAL AND REPLACEMENT.)

- * 3" (75) MINIMUM FROM TOP AND BOTTOM OF THE CONCRETE PAVEMENT OR BASE COURSE.
- ** IF THE FINAL SURFACE OF THE PAVEMENT IS CONCRETE, THE GUTTER IS TO BE FLUSH WITH THE PAVEMENT.

NOTE: ① SIDEWALK, DRIVEWAY PAVEMENT OR MEDIAN SURFACE SHALL BE SIMILAR TO THE MATERIAL BEING REMOVED AND WILL BE PAID FOR SEPARATELY.

SALT TOLERANT SOD AND TOP SOIL, 4" (100) RESTORATION WILL NOT BE PAID FOR SEPARATELY, BUT SHALL BE INCLUDED IN THE COST OF CURB OR CURB AND GUTTER REMOVAL AND REPLACEMENT.

- ② CURB OR CURB AND GUTTER REPLACEMENT SHALL MATCH THE SHAPE OF THE EXISTING CURB OR CURB AND GUTTER UNLESS OTHERWISE SPECIFIED.
- ③ FOR CURB OR CURB AND GUTTER REMOVAL AND REPLACEMENT ADJACENT TO FLEXIBLE PAVEMENT DELETE EPOXY COATED TIE BARS.
- ④ LONGITUDINAL BARS, IF ENCOUNTERED IN THE EXISTING CURB OR CURB AND GUTTER, ARE NOT TO BE REPLACED. CUTTING AND REMOVING LONGITUDINAL BARS SHALL BE INCLUDED IN THE COST OF CURB OR CURB AND GUTTER REMOVAL AND REPLACEMENT.
- ⑤ THE COST OF HMA SURFACE REMOVAL IN THE EXISTING GUTTER FLAG SHALL BE INCLUDED IN THE COST OF THE CURB AND GUTTER REMOVAL AND REPLACEMENT.
- ⑥ THE REMOVAL AND REPLACEMENT OF THE EXISTING CURB OR CURB AND GUTTER SHALL BE DONE IN ACCORDANCE WITH THE APPLICABLE PORTIONS OF SECTION 440 AND 606 OF THE STANDARD SPECIFICATIONS.
- ⑦ THE LOCATIONS OF REMOVAL AND REPLACEMENT OF EXISTING CURB OR CURB AND GUTTER SHALL BE DETERMINED BY THE RESIDENT ENGINEER AT THE TIME OF CONSTRUCTION.

UNSUITABLE SUB-BASE MATERIAL TO BE REMOVED, IF DIRECTED BY THE ENGINEER, SHALL BE REPLACED WITH EITHER SUB-BASE GRANULAR MATERIAL, TYPE B OR ADDITIONAL THICKNESS OF CONCRETE.

REMOVAL AND REPLACEMENT 4" (100) OR LESS IS INCLUDED IN THE COST OF CURB OR CURB AND GUTTER REMOVAL AND REPLACEMENT.

REMOVAL AND REPLACEMENT IN EXCESS OF 4" (100) WILL BE PAID FOR IN ACCORDANCE WITH ARTICLE 109.04 OF THE STANDARD SPECIFICATIONS.

PROPOSED #6 (20) EPOXY COATED TIE BARS 24" (600) LONG AT 24" (600) CENTERS WILL NOT BE PAID FOR SEPARATELY. DELETE EPOXY COATED TIE BARS IF EXISTING TIE BARS ARE USUABLE AS DETERMINED BY THE ENGINEER. (SEE NOTE ③).

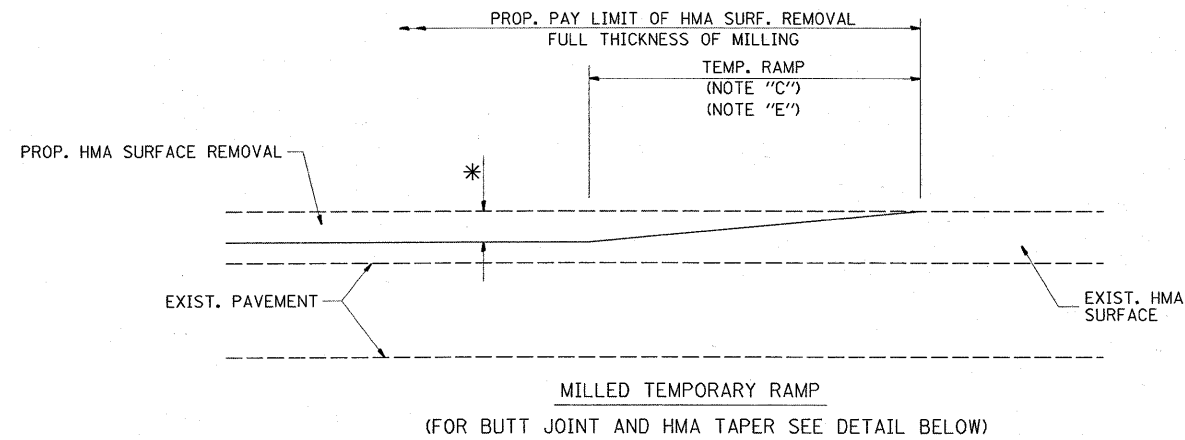
BASIS OF PAYMENT:

THIS WORK WILL BE PAID FOR AT THE CONTRACT UNIT PRICE PER FOOT (METER) FOR "CURB REMOVAL AND REPLACEMENT" OR "COMBINATION CONCRETE CURB AND GUTTER REMOVAL AND REPLACEMENT".

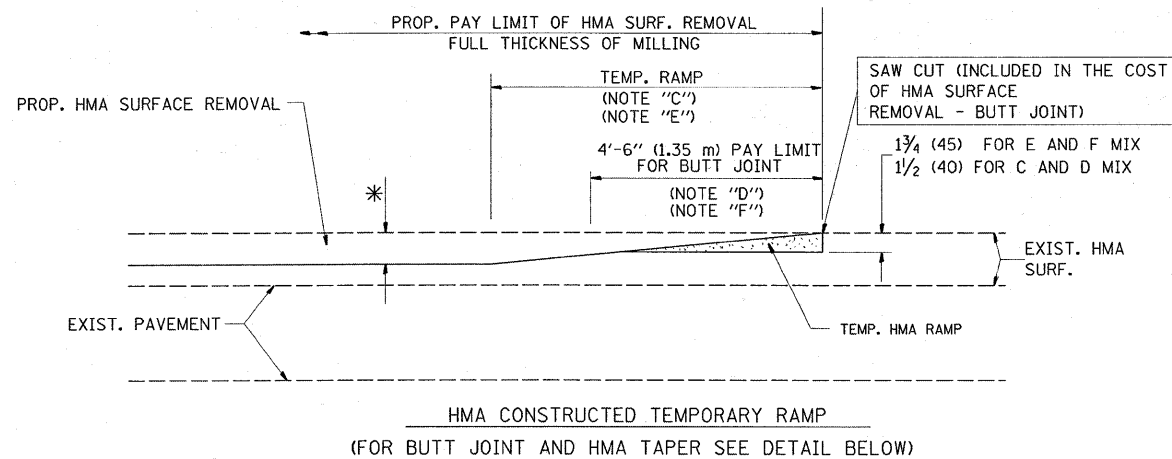
CURB OR CURB AND GUTTER REMOVAL AND REPLACEMENT

ALL DIMENSIONS ARE IN INCHES (MILLIMETERS) UNLESS OTHERWISE SHOWN.

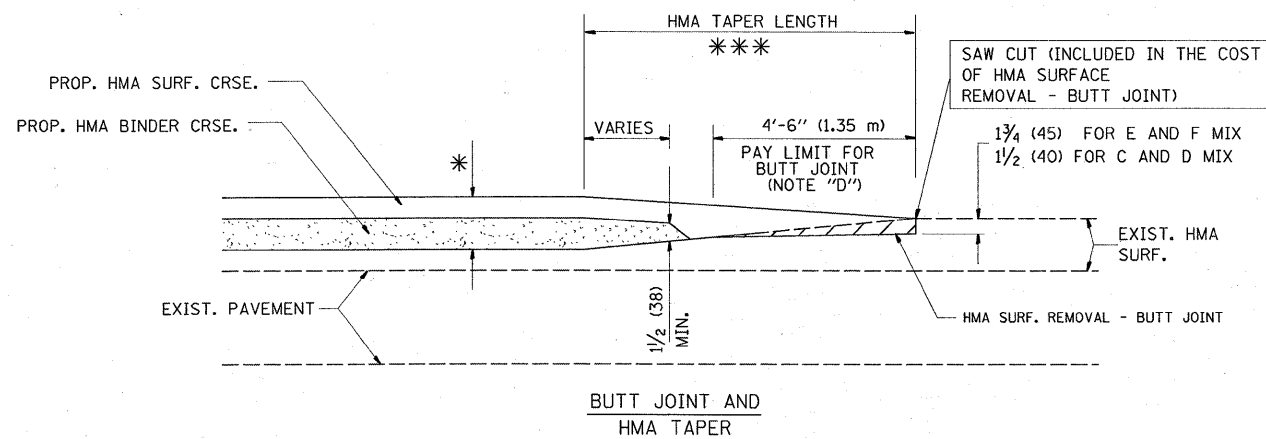
FILE NAME =	USER NAME = mdyjo	DESIGNED - A. HOUSEH	REVISED - R. SHAH 10-03-96	STATE OF ILLINOIS DEPARTMENT OF TRANSPORTATION	CURB OR CURB AND GUTTER REMOVAL AND REPLACEMENT			F.A.U. RTE.	SECTION	COUNTY	TOTAL SHEETS	SHEET NO.
os\pwork\PWIDOT\MIDYJA\dms92647\01st5.dgn		DRAWN -	REVISED - A. ABBAS 03-21-97		2843	2006-022 RS	COOK	22	14			
	PLOT SCALE = 50.0000 ' / IN.	CHECKED -	REVISED - M. GOMEZ 01-22-01		SCALE: NONE SHEET NO. 1 OF 1 SHEETS STA. TO STA.			BD600-06 (BD-24)		CONTRACT NO. 60857		
	PLOT DATE = 2/2/2009	DATE - 03-11-94	REVISED - R. BORO 01-01-07		FED. ROAD DIST. NO. 1 ILLINOIS FED. AID PROJECT							



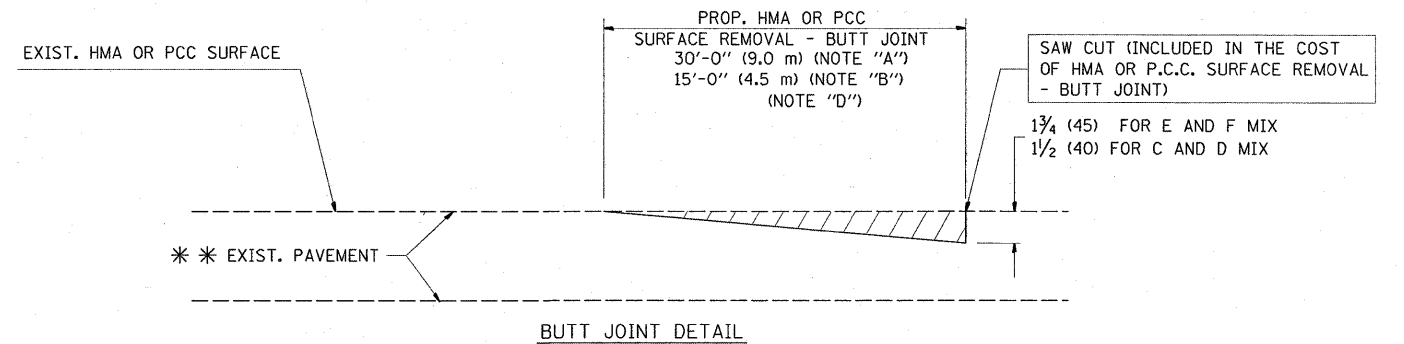
OPTION 1



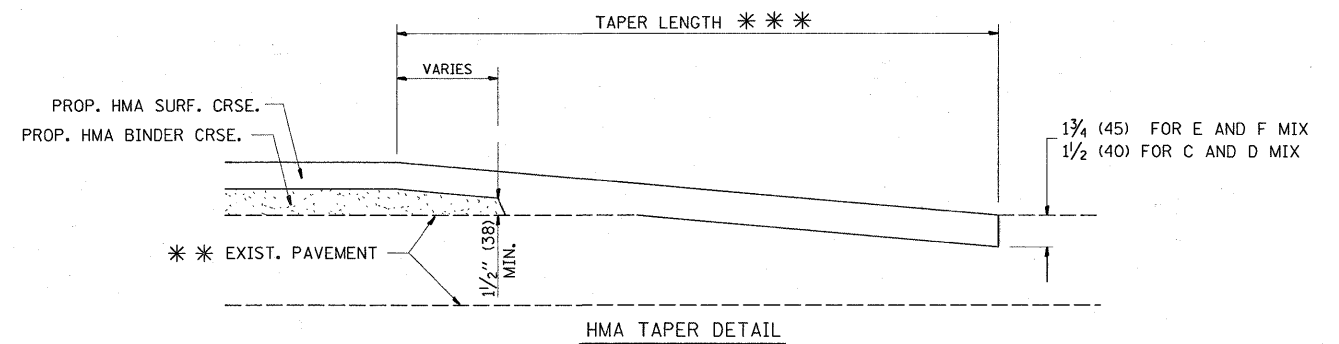
**OPTION 2
TYPICAL TEMPORARY RAMP**



**TYPICAL BUTT JOINT AND HMA TAPER
FOR MILLING AND RESURFACING**



BUTT JOINT DETAIL



**TYPICAL BUTT JOINT AND HMA TAPER
FOR RESURFACING ONLY**

*** PC CONCRETE, HMA OR HMA RESURFACED PAVEMENT.

NOTES

- A: MAINLINE ROADWAYS AND MAJOR SIDE ROADS.
 - B: MINOR SIDE ROADS.
 - C: THE TEMP. RAMP SHALL BE CONSTRUCTED IMMEDIATELY UPON REMOVAL OF THE EXISTING HMA SURFACE.
 - D: THE BUTT JOINT SHALL BE CONSTRUCTED IMMEDIATELY PRIOR TO PLACING THE PROPOSED HMA COURSES.
 - E: TAPER THE TEMP. RAMP AT A RATE OF 3'-0" (900 mm) PER 1 INCH (25 mm) OF MILLING THICKNESS.
 - F: INSTALLATION AND REMOVAL OF THE 4'-6" (1.35 m) TEMP. RAMP IS INCLUDED IN COST OF HMA SURFACE REMOVAL - BUTT JOINT
 - G: SEE ARTICLE 406.08 AND 406.14 OF THE STANDARD SPECIFICATIONS FOR "HMA AND/OR PCC SURFACE REMOVAL, BUTT JOINT".
- * SEE TYPICAL SECTIONS FOR MILLING THICKNESS.
- *** 20'-0" (6.1 m) PER 1 (25) RESURFACING (NOTE "A")
10'-0" (3.0 m) PER 1 (25) RESURFACING (NOTE "B")

BASIS OF PAYMENT:

THE BUTT JOINT WILL BE PAID FOR AT THE CONTRACT UNIT PRICE PER SQUARE YARD (SQUARE METER) FOR "HOT-MIX ASPHALT SURFACE REMOVAL - BUTT JOINT" OR FOR "PORTLAND CEMENT CONCRETE SURFACE REMOVAL - BUTT JOINT".

ALL DIMENSIONS ARE IN INCHES (MILLIMETERS) UNLESS OTHERWISE SHOWN.

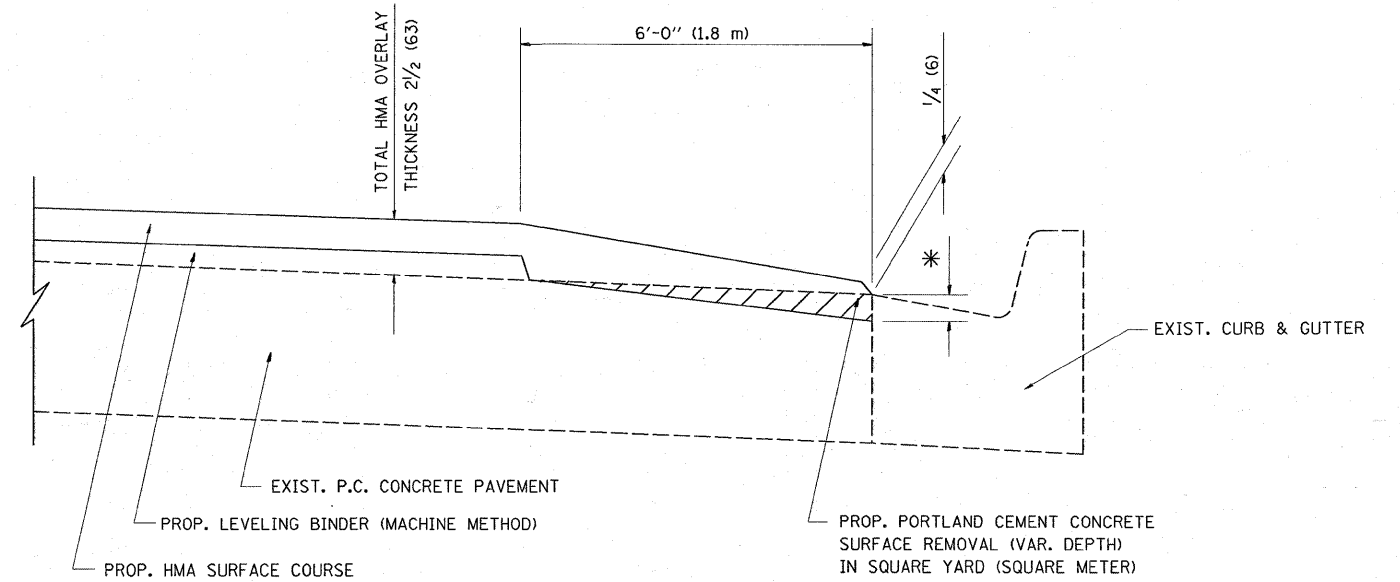
FILE NAME =	USER NAME = midyjs	DESIGNED - M. DE YONG	REVISED - R. SHAH 10-25-94
ci:\pw_work\PW1007\MIDYJA\dms92647\01st.dgn		DRAWN -	REVISED - A. ABBAS 03-21-97
PLOT SCALE = 50.00000' / IN.		CHECKED -	REVISED - M. GOMEZ 04-06-01
PLOT DATE = 2/2/2009		DATE - 06-13-90	REVISED - R. BORO 01-01-07

**STATE OF ILLINOIS
DEPARTMENT OF TRANSPORTATION**

**BUTT JOINT AND
HMA TAPER DETAILS**

SCALE: NONE SHEET NO. 1 OF 1 SHEETS STA. TO STA.

F.A.U. RTE. 2843	SECTION 2006-022 RS	COUNTY COOK	TOTAL SHEETS 22	SHEET NO. 15
BD400-05 BD32		CONTRACT NO. 60B57		
FED. ROAD DIST. NO. 1 [ILLINOIS] FED. AID PROJECT				



HMA TAPER AT
EDGE OF P.C.C. PAVEMENT

HMA SURFACE	LEVELING BINDER		* MILLING AT GUTTER FLAG
	MIX	THICKNESS	
C OR D	1 1/2 (38)	1 (25)	1/4 (33)
F	1 3/4 (44)	3/4 (19)	1/2 (38)

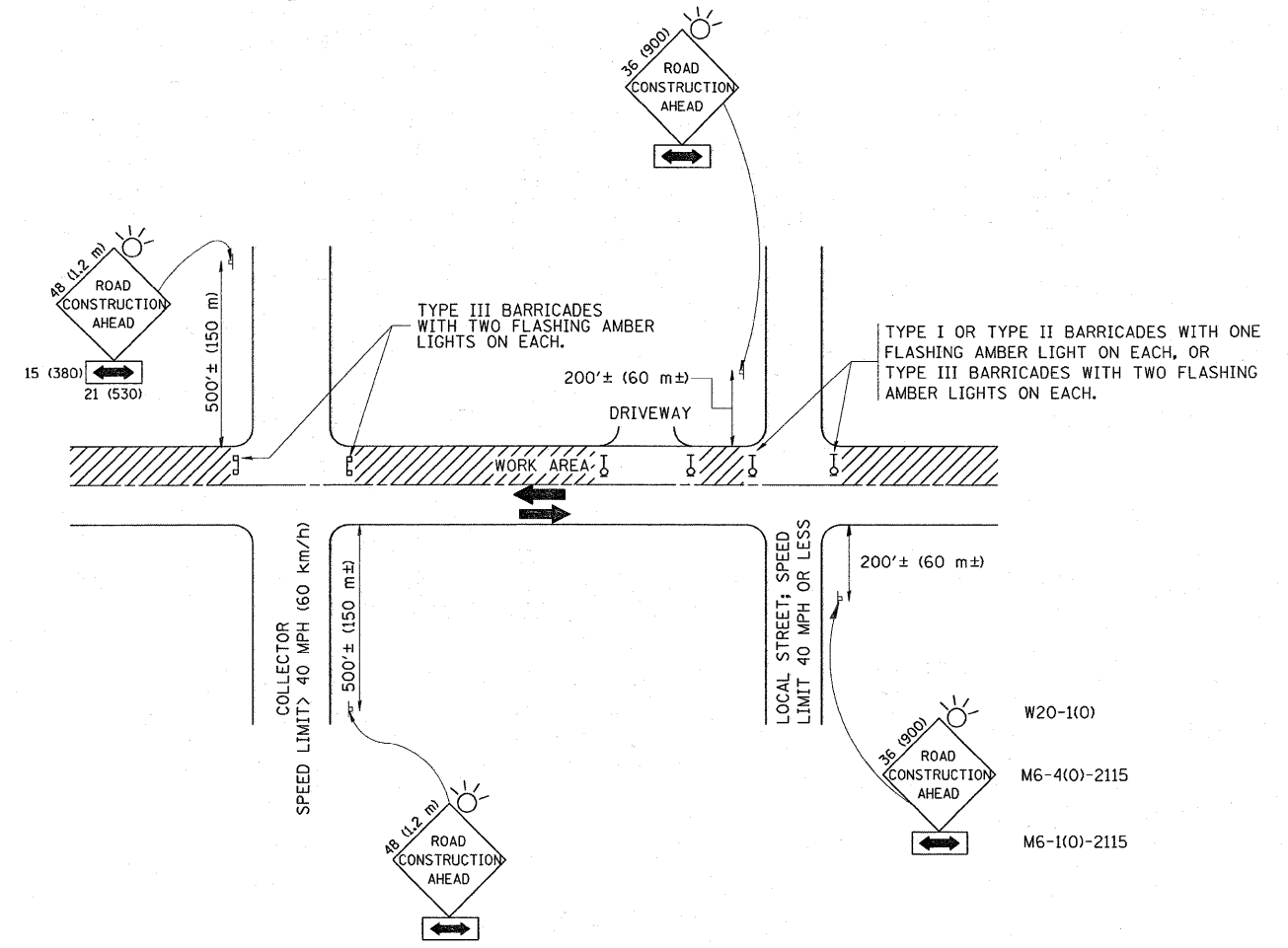
ALL DIMENSIONS ARE IN INCHES (MILLIMETERS) UNLESS OTHERWISE SHOWN.

FILE NAME =	USER NAME = midjja	DESIGNED - R. SHAH	REVISED - R. SHAH 10-25-94
c:\pw_work\PW100T\MIDYJA\dms92647\01stS.dgn		DRAWN - JIS	REVISED - A. ABBAS 05-05-99
PLOT SCALE = 50.0000' / IN.		CHECKED - A. ABBAS	REVISED - E. GOMEZ 12-21-00
PLOT DATE = 2/2/2009		DATE - 09-10-94	REVISED - R. BORO 01-01-07

STATE OF ILLINOIS
DEPARTMENT OF TRANSPORTATION

HMA TAPER AT EDGE OF P.C.C. PAVEMENT			
SCALE: NONE	SHEET NO. 1 OF 1 SHEETS	STA.	TO STA.

F.A.U. RTE.	SECTION	COUNTY	TOTAL SHEETS	SHEET NO.
2843	2006-022 RS	COOK	22	16
BD400-06 (BD33)		CONTRACT NO. 60857		
FED. ROAD DIST. NO. 1 ILLINOIS FED. AID PROJECT				



W20-1(0)
M6-4(0)-2115
M6-1(0)-2115

TRAFFIC CONTROL AND PROTECTION FOR SIDE ROADS, INTERSECTIONS, AND DRIVEWAYS

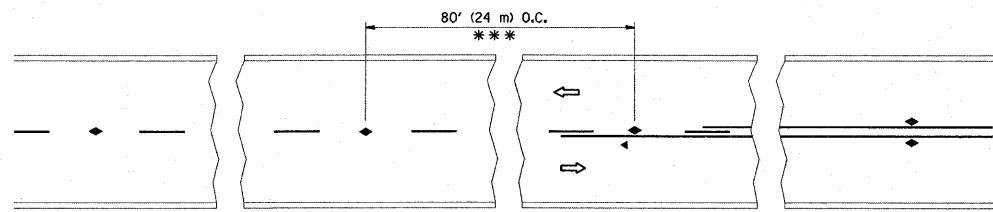
NOTES:

- A. FOR NO LANE RESTRICTION ON THE SIDE ROAD OR DRIVEWAYS
 1. SIDE ROAD WITH A SPEED LIMIT OF 40 MPH (60 km/h) OR LESS AS SHOWN ON THE DRAWING AND AS DIRECTED BY THE ENGINEER:
 - a) ONE ROAD CONSTRUCTION AHEAD SIGN 36 x 36 (900x900) WITH A FLASHER AND FLAG MOUNTED ON IT APPROXIMATELY 200' (60 m) IN ADVANCE OF THE MAIN ROUTE.
 - b) THE CLOSED PORTION OF THE MAIN ROUTE SHALL BE PROTECTED BY BLOCKING WITH TYPE I, TYPE II OR TYPE III BARRICADES, 1/3 OF THE CROSS SECTION OF THE CLOSED PORTION.
 2. SIDE ROAD WITH A SPEED LIMIT GREATER THAN 40 MPH (60 km/h) AS SHOWN ON THE DRAWING AND AS DIRECTED BY THE ENGINEER:
 - a) ONE ROAD CONSTRUCTION AHEAD SIGN 48 x 48 (1.2 m x 1.2 m) WITH A FLASHER MOUNTED ON IT APPROXIMATELY 500' (150 m) IN ADVANCE OF THE MAIN ROUTE.
 - b) THE CLOSED PORTION OF THE MAIN ROUTE SHALL BE PROTECTED BY BLOCKING WITH TYPE III BARRICADES, 1/2 OF THE CROSS SECTION OF THE CLOSED PORTION.
 3. WHEN THE SIDE ROAD LIES BETWEEN THE BEGINNING OF THE MAINLINE SIGNING AND THE WORK ZONE, A SINGLE HEADED ARROW (M6-1) SHALL BE USED IN LIEU OF THE DOUBLE HEADED ARROW (M6-4).
- B. FOR A LANE CLOSURE ON A SIDE ROAD OR DRIVEWAY:

USE APPLICABLE PORTIONS OF THE TYPICAL APPLICATION OF TRAFFIC CONTROL DEVICES (STD. 701501, STD. 701606 OR THE APPROPRIATE STANDARD). THE SPACING OF SIGNS AND BARRICADES SHALL BE ADJUSTED FOR FIELD CONDITIONS AS DIRECTED BY THE ENGINEER. THE DIRECTIONAL ARROW SHALL BE COVERED OR REMOVED WHEN NO LONGER CONSISTENT WITH THE SIDE ROAD LANE CLOSURE.
- C. ADVANCE WARNING SIGNS ARE TO BE OMITTED ON DRIVEWAY UNLESS OTHERWISE NOTED.
- D. THE TRAFFIC CONTROL AND PROTECTION FOR SIDE ROADS, INTERSECTIONS, AND DRIVEWAYS SHALL BE INCIDENTAL TO THE COST OF SPECIFIED TRAFFIC CONTROL STANDARDS OR ITEMS.

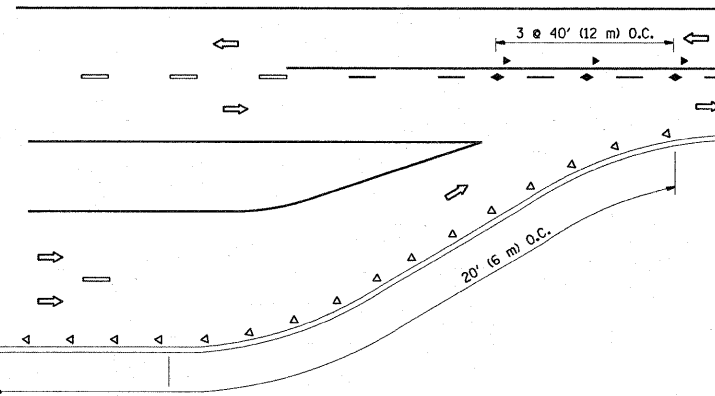
All dimensions are in millimeters (Inches) unless otherwise shown.

FILE NAME =	USER NAME = msdyja	DESIGNED - LHA	REVISED - J. OBERLE 10-18-95	STATE OF ILLINOIS DEPARTMENT OF TRANSPORTATION	TRAFFIC CONTROL AND PROTECTION FOR SIDE ROADS, INTERSECTIONS, AND DRIVEWAYS			F.A.U. RTE. 2843	SECTION 2006-022 RS	COUNTY COOK	TOTAL SHEETS 22	SHEET NO. 17
ct\pwwork\pwwid\m\dyja\dms92647\01st5	sd.dgn	DRAWN -	REVISED - A. HOUSEH 03-06-96		SCALE: NONE	SHEET NO. 1 OF 1 SHEETS	STA.	TO STA.	TC-10		CONTRACT NO. 60B57	
	PLOT SCALE = 50.0000' / IN.	CHECKED -	REVISED - A. HOUSEH 10-15-96		FED. ROAD DIST. NO. 1 [ILLINOIS] FED. AID PROJECT							
	PLOT DATE = 2/2/2009	DATE - 06-89	REVISED - T. RAMMACHER 01-06-00									

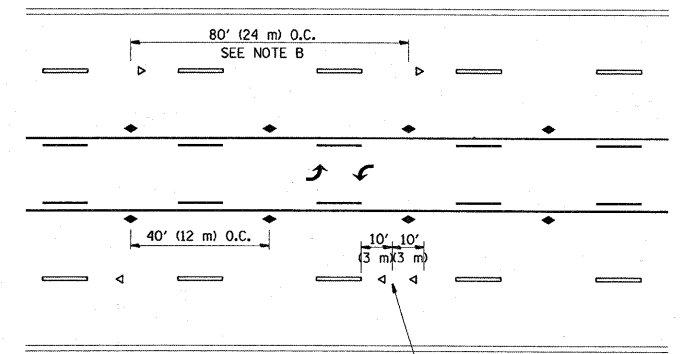


*** REDUCE TO 40' (12 m) O.C. ON CURVES WITH POSTED OR ADVISORY SPEED 45 M.P.H. (70 km/h) OR LESS.

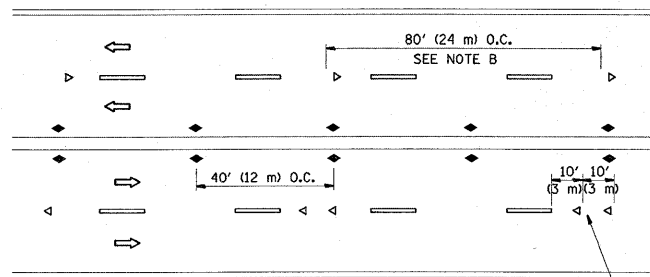
TWO-LANE/TWO-WAY



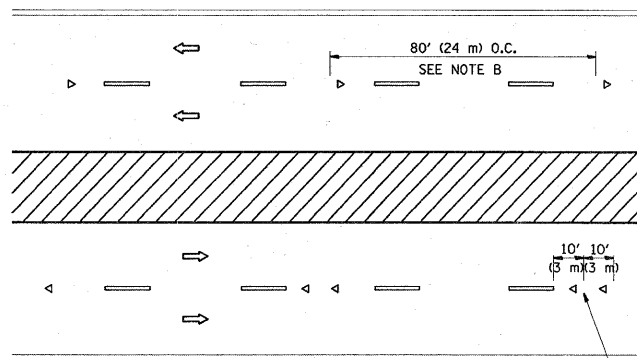
LANE REDUCTION TRANSITION



TWO-WAY LEFT TURN



MULTI-LANE/UNDIVIDED



MULTI-LANE/DIVIDED

GENERAL NOTES

1. MARKERS USED WITH DASHED LINES SHALL BE CENTERED IN THE GAP BETWEEN SEGMENTS.
2. MARKERS USED ADJACENT TO SOLID LINES SHALL BE OFFSET 2 TO 3 (50 TO 75) TOWARD TRAFFIC AS SHOWN.
3. MARKERS THROUGH TANGENTS LESS THAN 500' (150 m) IN LENGTH BETWEEN CURVES SHALL BE INSTALLED AT THE LESSER OF THE TWO CURVE SPACINGS.

SYMBOLS

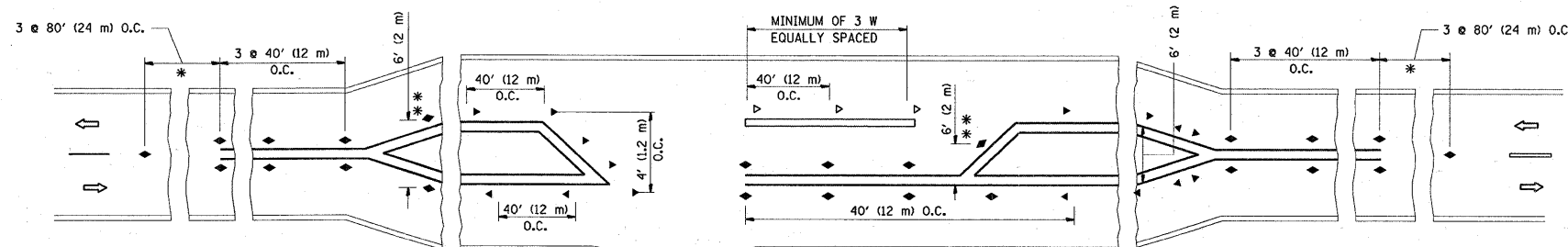
- YELLOW STRIPE
- WHITE STRIPE
- ◀ ONE-WAY AMBER MARKER
- ◁ ONE-WAY CRYSTAL MARKER (W/O)
- ◆ TWO-WAY AMBER MARKER

LANE MARKER NOTES

- B. REDUCE TO 40' (12 m) O.C. ON CURVES WHERE ADVISORY SPEEDS ARE 10 M.P.H. (20 km/h) LOWER THAN POSTED SPEEDS.
- A. USE DOUBLE LANE LINE MARKERS SPACED AS SHOWN.

DESIGN NOTES

1. DOUBLE LANE LINE MARKERS SHALL BE USED UNLESS SPECIFIED OTHERWISE.
2. EXCEPT AS SHOWN ON THE LANE REDUCTION TRANSITION AND FREEWAY EXIT RAMP DETAIL, MARKERS ARE NOT TO BE SPECIFIED ON RIGHT EDGE LINES.
3. THE EXACT MARKER LIMITS, SPACING, AND COLOR SHOULD BE INCLUDED IN THE PLANS.
4. MARKERS SHOULD NOT BE USED ALONGSIDE CURBS EXCEPT FOR EXTREMELY SHORT SECTIONS OF CURBS WHERE NOT MORE THAN TWO MARKERS WOULD BE INVOLVED.



LEFT TURN

* SEE TWO-LANE/TWO-WAY WHERE MARKERS CONTINUE
 ** WHERE THE MEDIAN WIDTH IS 6' (2 m) OR LESS USE TWO-WAY MARKERS.

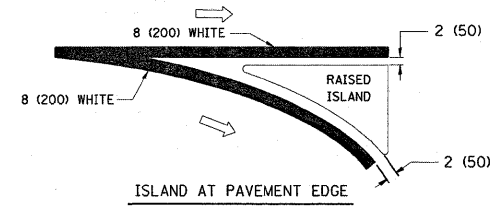
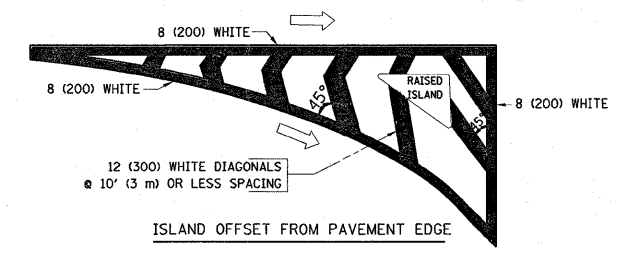
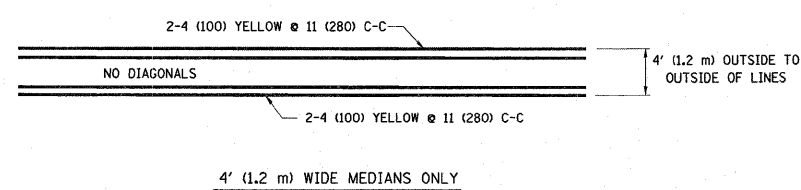
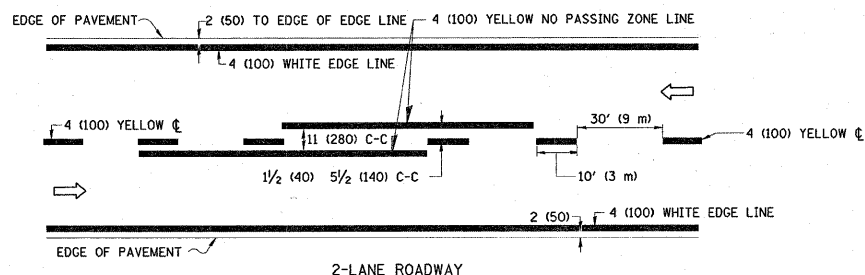
All dimensions are in Inches (millimeters) unless otherwise shown.

FILE NAME =	USER NAME = midjo	DESIGNED -	REVISED - T. RAMMACHER 09-19-94
ct:\pw_work\PWIDOT\MIDYJA\dms92647\DistStd.dgn		DRAWN -	REVISED - T. RAMMACHER 03-12-99
PLOT SCALE = 50.0000' / IN.		CHECKED -	REVISED - T. RAMMACHER 01-06-00
PLOT DATE = 2/2/2009		DATE -	REVISED -

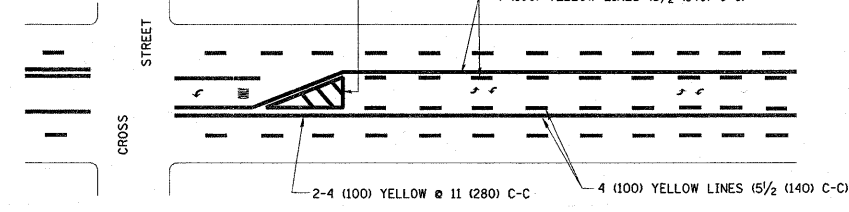
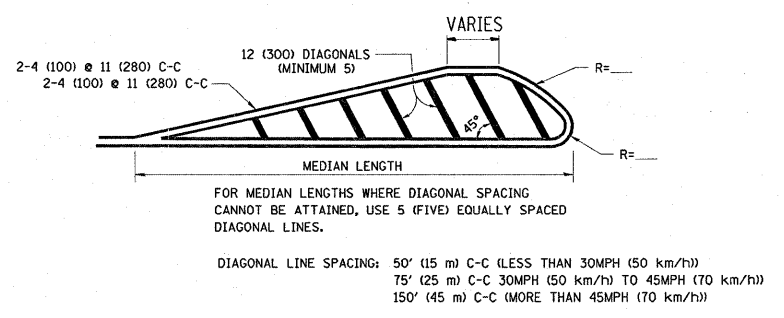
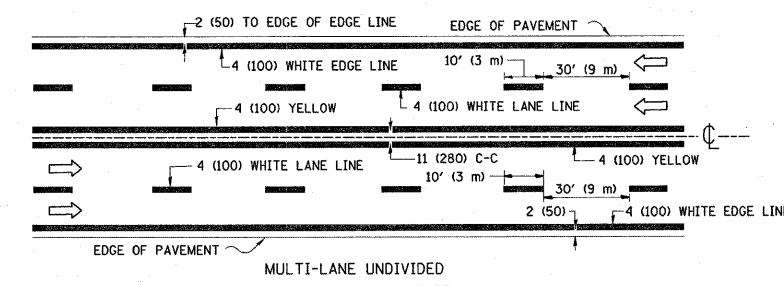
STATE OF ILLINOIS
 DEPARTMENT OF TRANSPORTATION

TYPICAL APPLICATIONS	
RAISED REFLECTIVE PAVEMENT MARKERS (SNOW-PLOW RESISTANT)	
SCALE: NONE	SHEET NO. 1 OF 1 SHEETS
STA.	TO STA.

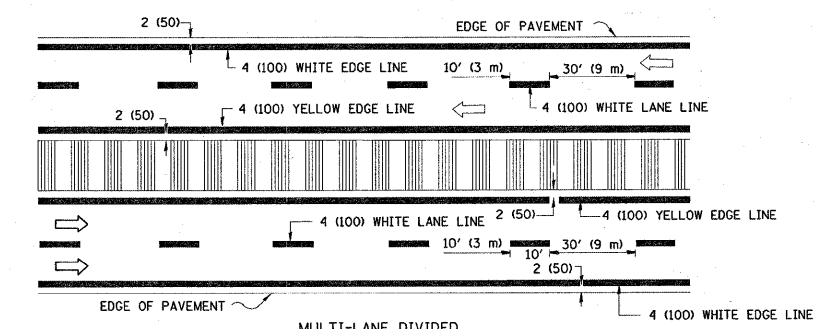
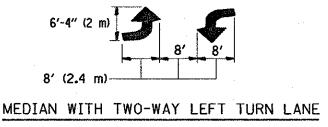
F.A.I. RTE.	SECTION	COUNTY	TOTAL SHEETS	SHEET NO.
2843	2006-022 RS	COOK	22	18
TC-11			CONTRACT NO. 60857	
FED. ROAD DIST. NO. 1 ILLINOIS FED. AID PROJECT				



TYPICAL ISLAND MARKING

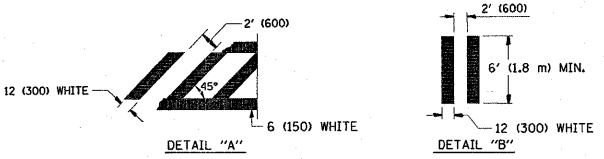
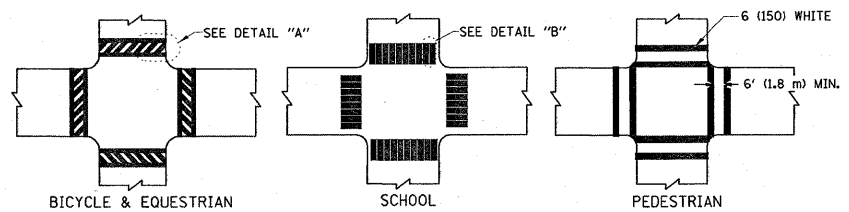


TYPICAL PAINTED MEDIAN MARKING

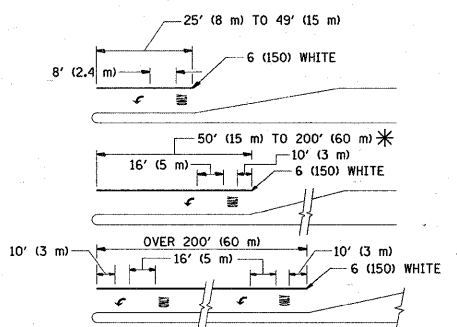


NOTE: MEDIANS WITH BARRIER CURB DO NOT REQUIRE AN EDGE LINE

TYPICAL LANE AND EDGE LINE MARKING



TYPICAL CROSSWALK MARKING



FULL SIZE LETTERS 8' (2.4 m) AND ARROWS SHALL BE USED.
AREA = 15.6 SQ. FT. (1.5 m²) ONLY AREA = 20.8 SQ. FT. (1.9 m²)

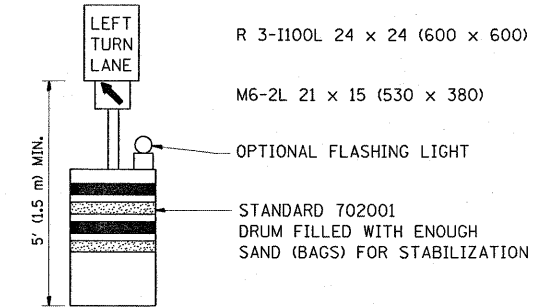
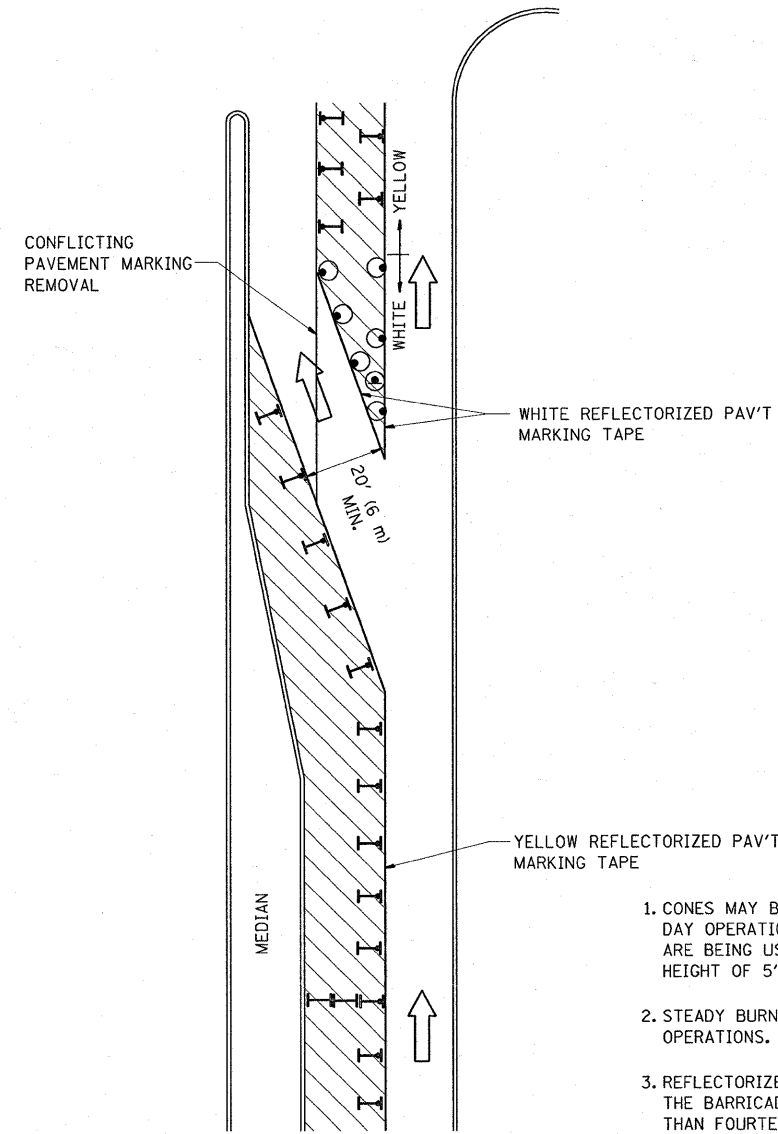
* TURN LANES IN EXCESS OF 400' (120 m) IN LENGTH MAY HAVE AN ADDITIONAL SET OF ARROW - "ONLY" INSTALLED MIDWAY BETWEEN THE OTHER TWO SETS OF ARROW - "ONLY".

TYPICAL TURN LANE MARKING

TYPE OF MARKING	WIDTH OF LINE	PATTERN	COLOR	SPACING / REMARKS
CENTERLINE ON 2 LANE PAVEMENT	4 (100)	SKIP-DASH	YELLOW	10' (3 m) LINE WITH 30' (9 m) SPACE
CENTERLINE ON MULTI-LANE UNDIVIDED PAVEMENT	2 @ 4 (100)	SOLID	YELLOW	11 (280) C-C
NO PASSING ZONE LINES: FOR ONE DIRECTION FOR BOTH DIRECTIONS	4 (100) 2 @ 4 (100)	SOLID SOLID	YELLOW YELLOW	5/2 (140) C-C FROM SKIP-DASH CENTERLINE 11 (280) C-C OMIT SKIP-DASH CENTERLINE BETWEEN
LANE LINES	4 (100) 5 (125) ON FREEWAYS	SKIP-DASH SKIP-DASH	WHITE WHITE	10' (3 m) LINE WITH 30' (9 m) SPACE
DOTTED LINES (EXTENSIONS OF CENTER, LANE OR TURN LANE MARKINGS)	SAME AS LINE BEING EXTENDED	SKIP-DASH	SAME AS LINE BEING EXTENDED	2' (600) LINE WITH 6' (1.8 m) SPACE
EDGE LINES	4 (100)	SOLID	YELLOW-LEFT WHITE-RIGHT	OUTLINE MOUNTABLE MEDIANS IN YELLOW; EDGE LINES ARE NOT USED NEXT TO BARRIER CURB
TURN LANE MARKINGS	6 (150) LINE; FULL SIZE LETTERS & SYMBOLS (8' (2.4m))	SOLID	WHITE	SEE TYPICAL TURN LANE MARKING DETAIL
TWO WAY LEFT TURN MARKING	2 @ 4 (100) EACH DIRECTION 8' (2.4m) LEFT ARROW	SKIP-DASH AND SOLID IN PAIRS	YELLOW WHITE	10' (3 m) LINE WITH 30' (9 m) SPACE FOR SKIP-DASH; 5/2 (140) C-C BETWEEN SOLID LINE AND SKIP-DASH LINE SEE TYPICAL TWO-WAY LEFT TURN MARKING DETAIL
CROSSWALK LINES (PEDESTRIAN) A. DIAGONALS (BIKE & EQUESTRIAN) B. LONGITUDINAL BARS (SCHOOL)	2 @ 6 (150) 12 (300) @ 45° 12 (300) @ 90°	SOLID SOLID SOLID	WHITE WHITE WHITE	NOT LESS THAN 6' (1.8 m) APART 2' (600) APART 2' (600) APART SEE TYPICAL CROSSWALK MARKING DETAILS.
STOP LINES	24 (600)	SOLID	WHITE	PLACE 4' (1.2 m) IN ADVANCE OF AND PARALLEL TO CROSSWALK, IF PRESENT. OTHERWISE, PLACE AT DESIRED STOPPING POINT. PARALLEL TO CROSSROAD CENTERLINE, WHERE POSSIBLE
PAINTED MEDIANS	2 @ 4 (100) WITH 12 (300) DIAGONALS @ 45° NO DIAGONALS USED FOR 4' (1.2 m) WIDE MEDIANS	SOLID	YELLOW: TWO WAY TRAFFIC WHITE: ONE WAY TRAFFIC	11 (280) C-C FOR THE DOUBLE LINE SEE TYPICAL PAINTED MEDIAN MARKING.
GORE MARKING AND CHANNELIZING LINES	8 (200) WITH 12 (300) DIAGONALS @ 45°	SOLID	WHITE	DIAGONALS: 15' (4.5 m) C-C (LESS THAN 30MPH (50 km/h)) 20' (6 m) C-C 30MPH (50 km/h) TO 45MPH (70 km/h) 30' (9 m) C-C (OVER 45MPH (70 km/h))
RAILROAD CROSSING	24 (600) TRANSVERSE LINES; "RR" IS 6' (1.8 m) LETTERS; 16 (400) LINE FOR "X"	SOLID	WHITE	SEE STATE STANDARD 780001 AREA OF: "R"=3.6 SQ. FT. (0.33 m ²) EACH "X"=54.0 SQ. FT. (5.0 m ²)
SHOULDER DIAGONALS	12 (300) @ 45°	SOLID	WHITE - RIGHT YELLOW - LEFT	50' (15 m) C-C (LESS THAN 30MPH (50 km/h)) 75' (25 m) C-C (30 MPH (50 km/h) TO 45MPH (70 km/h)) 150' (45 m) C-C (OVER 45MPH (70 km/h))

FOR FURTHER DETAILS ON PAVEMENT MARKING REFER TO STANDARD SPECIFICATIONS FOR ROAD AND BRIDGE CONSTRUCTION AND STATE STANDARD 780001.

All dimensions are in inches (millimeters) unless otherwise shown.


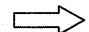



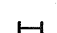


GENERAL NOTES

1. CONES MAY BE SUBSTITUTED FOR BARRICADES OR DRUMS AT HALF THE SPACING DURING DAY OPERATIONS. CONES SHALL BE A MINIMUM OF 28 (710) IN HEIGHT. WHEN CONES ARE BEING USED, THE "LEFT TURN LANE" SIGN MAY BE SKID MOUNTED AT A MINIMUM HEIGHT OF 5' (1.5 m).
2. STEADY BURNING LIGHTS WILL NOT BE REQUIRED ON BARRICADES OR DRUMS FOR DAY OPERATIONS. ALL LIGHTS SHALL BE MONODIRECTIONAL.
3. REFLECTORIZED TEMPORARY PAVEMENT MARKING TAPE SHALL BE PLACED THROUGHOUT THE BARRICADED AREA OF EACH TURN BAY WHERE THE CLOSURE TIME IS GREATER THAN FOURTEEN DAYS.
4. THIS APPLICATION ALSO APPLIES WHEN WORK IS BEING PERFORMED IN THE RIGHT LANE(S) AND THE RIGHT TURN BAY IS TO REMAIN OPEN. UNDER THIS CONDITION, "RIGHT TURN LANE" R3-100 24 x 24 (600 x 600) AND M6-2R 21 x 15 (530 x 380) SHALL BE USED.
5. THESE CONTROLS SHALL SUPPLEMENT MAINLINE TRAFFIC CONTROL FOR LANE CLOSURES.
6. LONGITUDINAL DIMENSIONS MAY BE ADJUSTED TO FIT FIELD CONDITIONS.
7. FORM BT 725 IS REQUIRED.
8. TRAFFIC CONTROL AND PROTECTION AT TURN BAYS (TO REMAIN OPEN TO TRAFFIC) SHALL BE INCLUDED IN THE COST SPECIFIED TRAFFIC CONTROL STANDARDS OR ITEMS.

All dimensions are in inches (millimeters) unless otherwise shown.

LEGEND

-  WORK AREA
-  LANE OPEN TO TRAFFIC
-  TYPE I OR II BARRICADE WITH STEADY BURN LIGHT
-  DRUM WITH STEADY BURN LIGHT
-  DRUM WITH SIGN (WITH OPTIONAL FLASHING LIGHT) SEE DETAIL
-  TYPE I OR II CHECK BARRICADE WITH FLASHING LIGHT

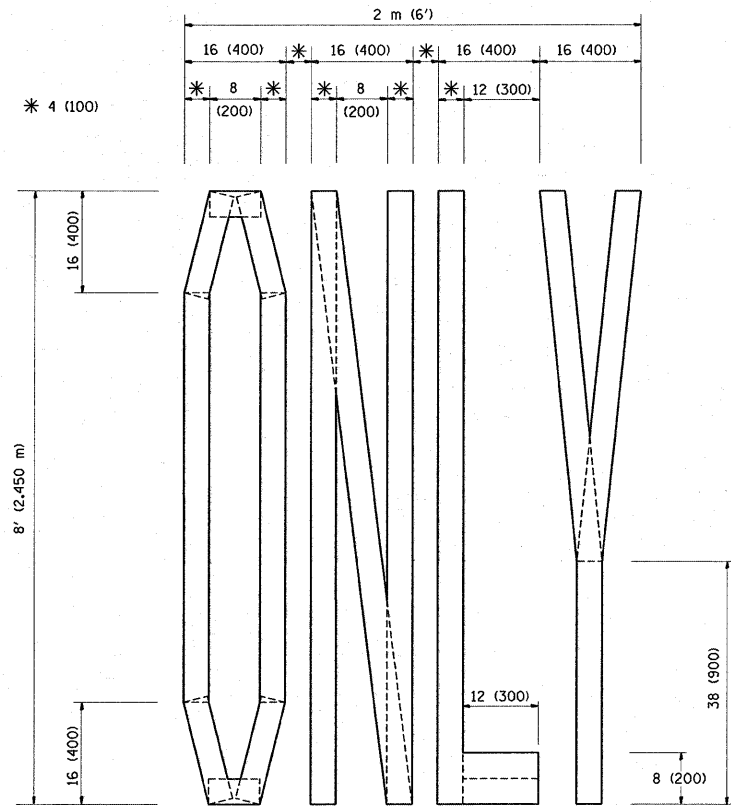
FILE NAME =	USER NAME = midy_je	DESIGNED -	REVISED -T. RAMMACHER 09-08-94
es\pw_work\PWIDOT\MIDYJA\dms92647\Dist5.dgn		DRAWN -	REVISED - A. HOUSEH 11-07-95
		CHECKED -	REVISED - A. HOUSEH 10-12-96
		DATE -	REVISED -T. RAMMACHER 01-06-00

**STATE OF ILLINOIS
DEPARTMENT OF TRANSPORTATION**

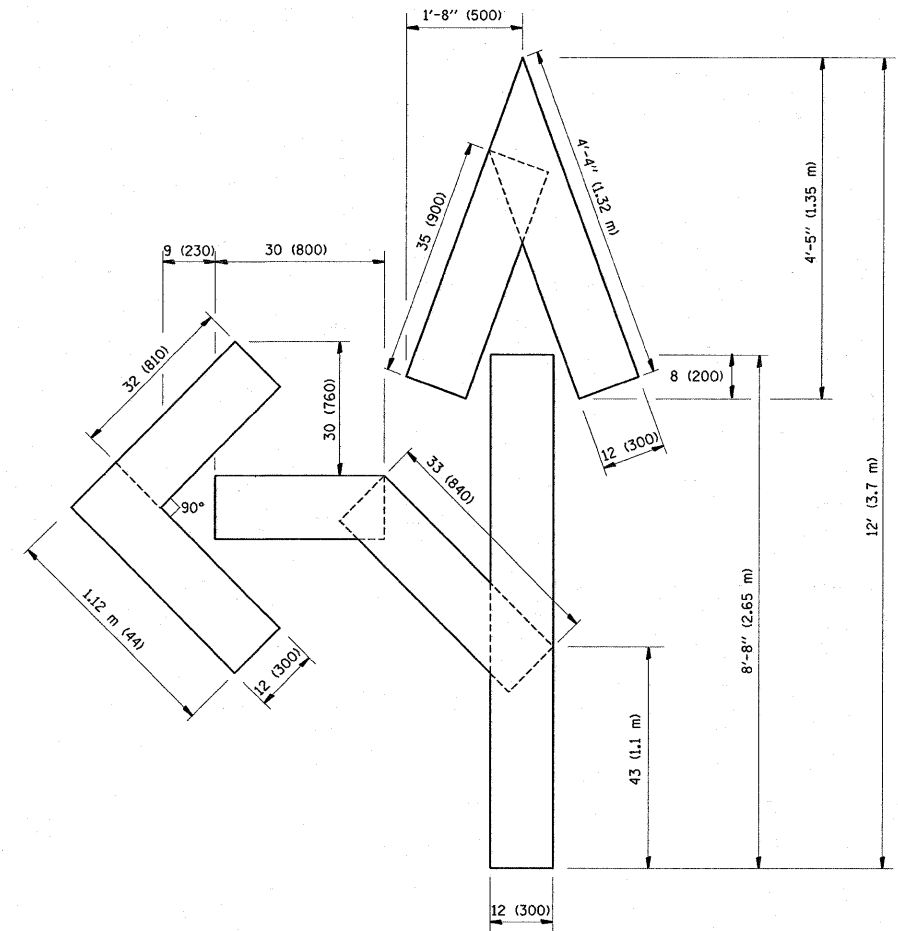
**TRAFFIC CONTROL AND PROTECTION AT TURN BAYS
(TO REMAIN OPEN TO TRAFFIC)**

SCALE: NONE SHEET NO. 1 OF 1 SHEETS STA. TO STA.

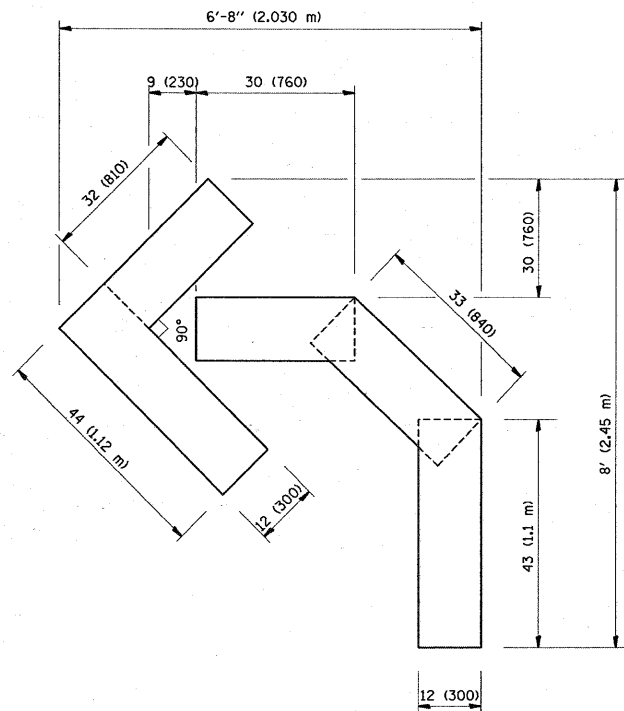
F.A.U. RTE.	SECTION	COUNTY	TOTAL SHEETS	SHEET NO.
2843	2006-022 RS	COOK	22	20
TC-14			CONTRACT NO. 60B57	
FED. ROAD DIST. NO. 1 ILLINOIS FED. AID PROJECT				



QUANTITY
 4 (100) LINE = 64.1 ft. (19.7 m)
 21.1 sq. ft. (1.97 sq. m)



QUANTITY
 4 (100) LINE = 82.5 ft. (25.3 m)
 27.5 sq. ft. (2.53 sq. m)



QUANTITY
 4 (100) LINE = 45.5 ft. (13.9 m)
 15.2 sq. ft. (1.39 sq. m)

All dimensions are in inches (millimeters) unless otherwise shown.

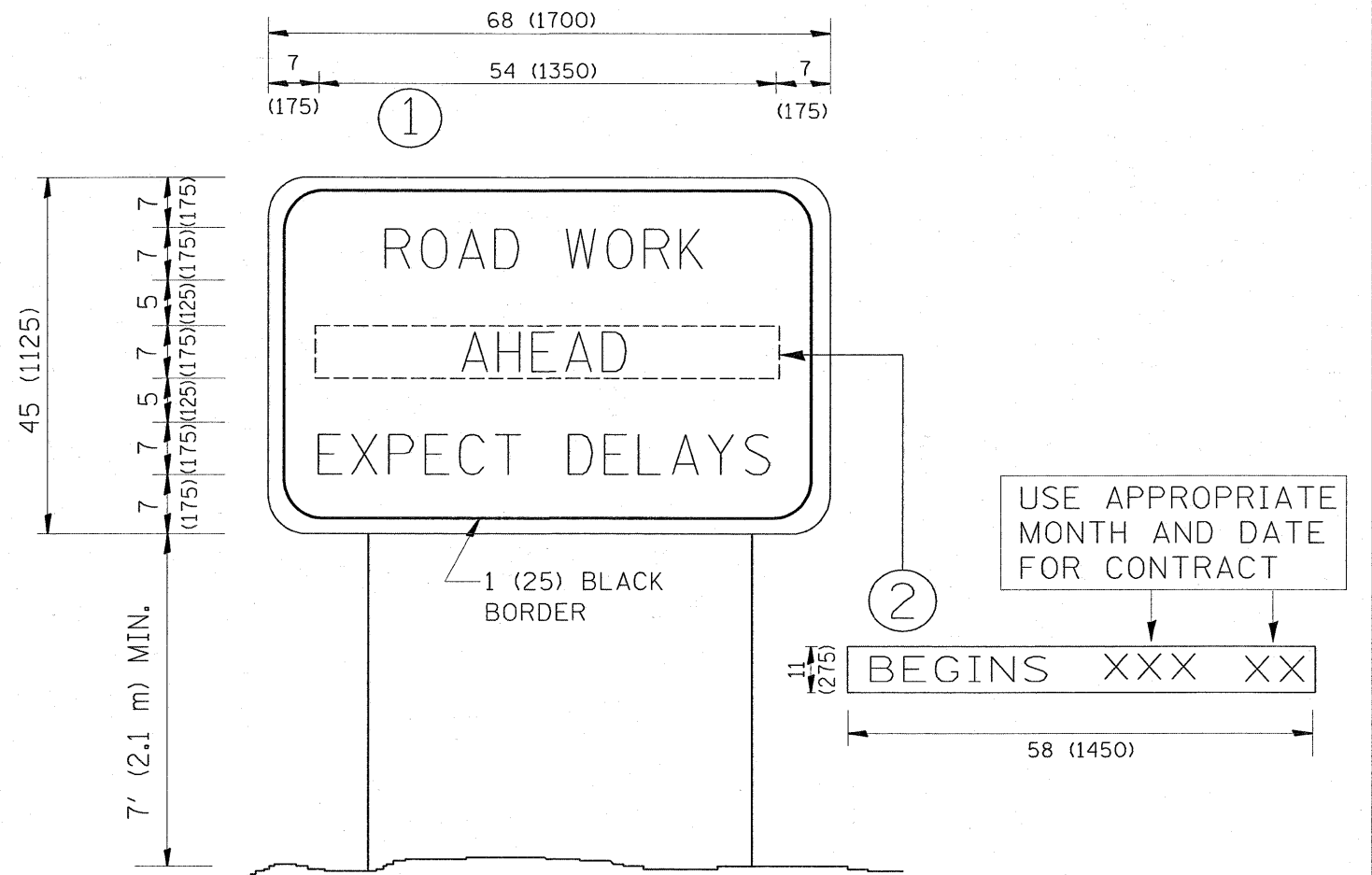
FILE NAME =	USER NAME = midjja	DESIGNED -	REVISED - T. RAMMACHER 06-05-96
c:\pw_work\p\1001\MIDYJA\dms92647\Dist	sd.dgn	DRAWN -	REVISED - T. RAMMACHER 11-04-97
PLOT SCALE = 50.0000' / IN.	CHECKED -	REVISED - T. RAMMACHER 03-02-98	
PLOT DATE = 2/2/2009	DATE = 09-18-94	REVISED - E. GOMEZ 08-28-00	

STATE OF ILLINOIS
 DEPARTMENT OF TRANSPORTATION

PAVEMENT MARKING LETTERS AND SYMBOLS
 FOR TRAFFIC STAGING

SCALE: NONE SHEET NO. 1 OF 1 SHEETS STA. TO STA.

F.A.U. RTE.	SECTION	COUNTY	TOTAL SHEETS	SHEET NO.
2843	2006-022 RS	COOK	22	21
TC-16			CONTRACT NO. 60857	
FED. ROAD DIST. NO. 1 ILLINOIS FED. AID PROJECT				



NOTES:

1. USE BLACK LETTERING ON ORANGE BACKGROUND.
2. ERECT SIGNS IN ADVANCE OF THE LOCATION FOR THE "ROAD CONSTRUCTION AHEAD" SIGN AT LOCATIONS AS DIRECTED BY THE ENGINEER.
3. ERECT SIGN ① WITH INSTALLED PANEL ② ONE WEEK PRIOR TO THE START OF CONSTRUCTION.
4. REMOVE PANEL ② SOON AFTER THE START OF CONSTRUCTION.
5. SEE SPECIAL PROVISION FOR "TEMPORARY INFORMATION SIGNING" FOR ADDITIONAL INFORMATION.
6. ONE SIGN ASSEMBLY EQUALS 25.70 SQ. FT. (2.3 SQ. M.)
7. SHALL BE PAID FOR AS TEMPORARY INFORMATION SIGNING.

ALL DIMENSIONS ARE IN INCHES (MILLIMETERS)
UNLESS OTHERWISE SHOWN.

FILE NAME =	USER NAME = mdyjs	DESIGNED -	REVISED - R. MIRS 09-15-97
ca\pw_work\PWIDOT\MIDYJA\dms92647\DistStd.dgn		DRAWN -	REVISED - R. MIRS 12-11-97
		CHECKED -	REVISED - T. RAMMACHER 02-02-99
		DATE -	REVISED - C. JUCIUS 01-31-07

STATE OF ILLINOIS
DEPARTMENT OF TRANSPORTATION

ARTERIAL ROAD
INFORMATION SIGN

SCALE: NONE SHEET NO. 1 OF 1 SHEETS STA. TO STA.

F.A.U. RTE.	SECTION	COUNTY	TOTAL SHEETS	SHEET NO.
2843	2006-022 RS	COOK	22	22
TC-22			CONTRACT NO. 60B57	
FED. ROAD DIST. NO. 1 [ILLINOIS] FED. AID PROJECT				