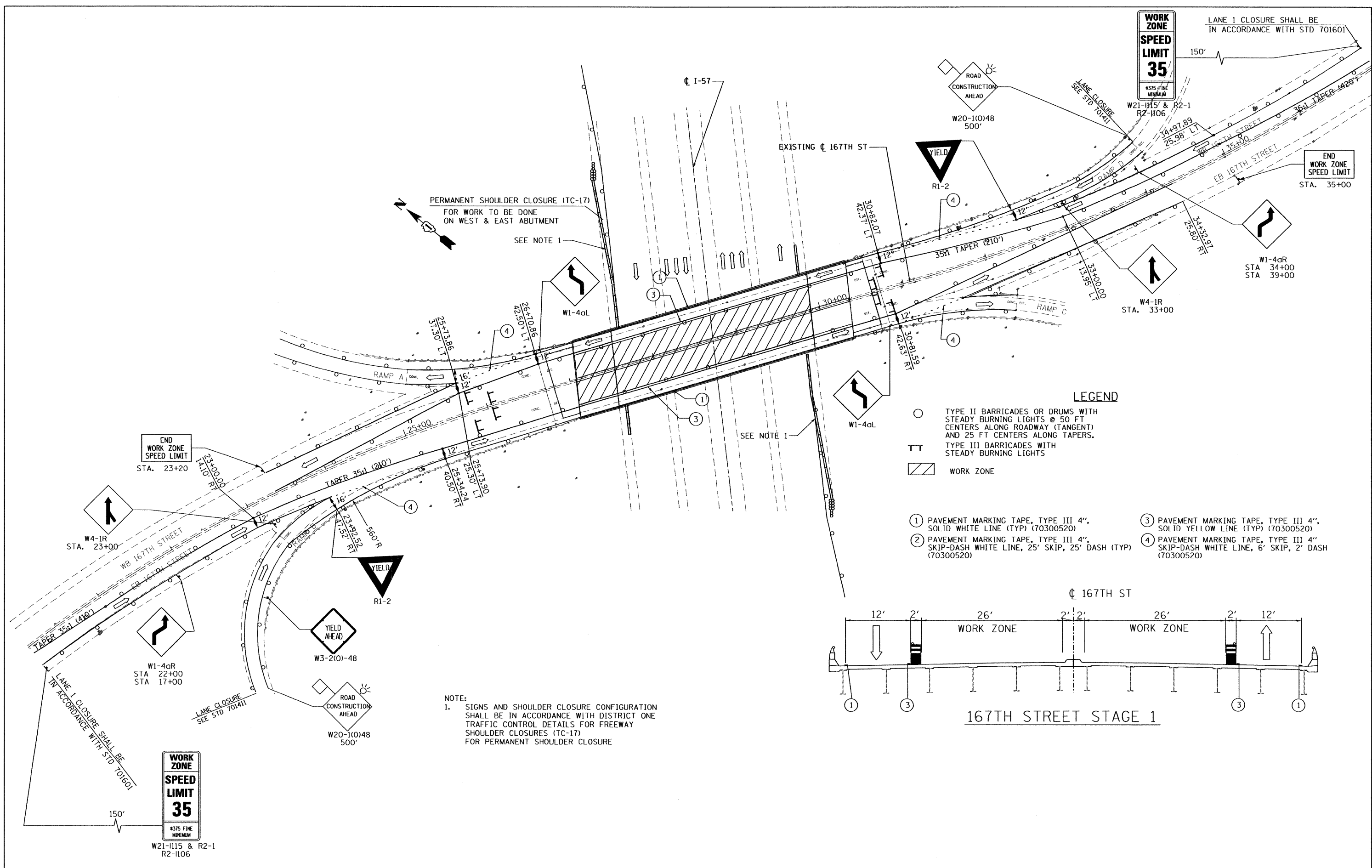
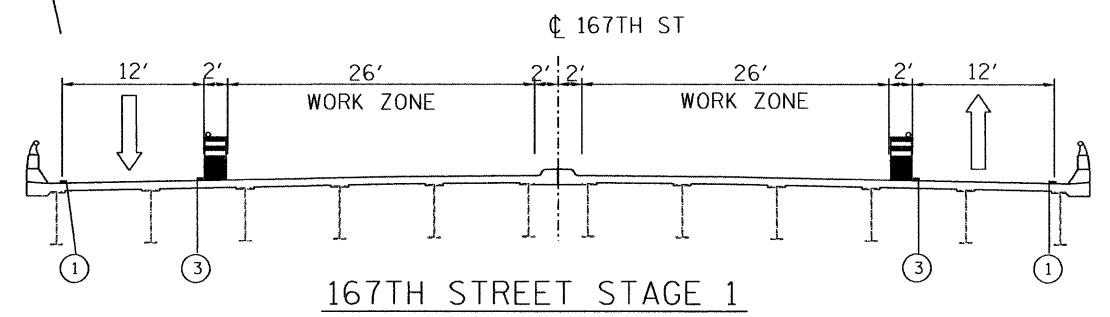


FILE NAME: P:\2007\ME070800_Ver\car_Plan\cadd\MOI\Bases\SH1.167\PM0701167.dwg
 USER: JMM
 DATE: 1/22/2009
 MILLENNIA ENGINEERING



NOTE:
 1. SIGNS AND SHOULDER CLOSURE CONFIGURATION SHALL BE IN ACCORDANCE WITH DISTRICT ONE TRAFFIC CONTROL DETAILS FOR FREEWAY SHOULDER CLOSURES (TC-17) FOR PERMANENT SHOULDER CLOSURE

- LEGEND**
- TYPE II BARRICADES OR DRUMS WITH STEADY BURNING LIGHTS @ 50 FT CENTERS ALONG ROADWAY (TANGENT) AND 25 FT CENTERS ALONG TAPERS.
 - ▬ TYPE III BARRICADES WITH STEADY BURNING LIGHTS
 - ▨ WORK ZONE
 - ① PAVEMENT MARKING TAPE, TYPE III 4", SOLID WHITE LINE (TYP) (70300520)
 - ② PAVEMENT MARKING TAPE, TYPE III 4", SKIP-DASH WHITE LINE, 25' SKIP, 25' DASH (TYP) (70300520)
 - ③ PAVEMENT MARKING TAPE, TYPE III 4", SOLID YELLOW LINE (TYP) (70300520)
 - ④ PAVEMENT MARKING TAPE, TYPE III 4", SKIP-DASH WHITE LINE, 6' SKIP, 2' DASH (70300520)



MILLENNIA ENGINEERING
 200 22ND Street, Suite 216, Lombard, IL 60148
 630.785.8110 voice, 630.839.2566 fax
 www.millenniaeng.com

DESIGNED - TVN	REVISED -
DRAWN - TVN	REVISED -
CHECKED - RPD	REVISED -
DATE - 1/22/2009	REVISED -

**STATE OF ILLINOIS
 DEPARTMENT OF TRANSPORTATION**

**FAI 57/1-57
 AT 167TH STREET**

SCALE: 1"=50' SHEET NO. 6 OF 21 SHEETS STA. TO STA.

F.A.I. RTE. 57	SECTION 1011.31	COUNTY COOK	TOTAL SHEETS 21	SHEET NO. 6
SUGGESTED STAGES OF CONSTRUCTION & TRAFFIC CONTROL STAGE-1				
CONTRACT NO. 60D63				

FED. ROAD DIST. NO. 1 | ILLINOIS FED. AID PROJECT
 P:\2007\ME070800_Ver\car_Plan\cadd\MOI\Bases\SH1.167\PM0701167.dwg