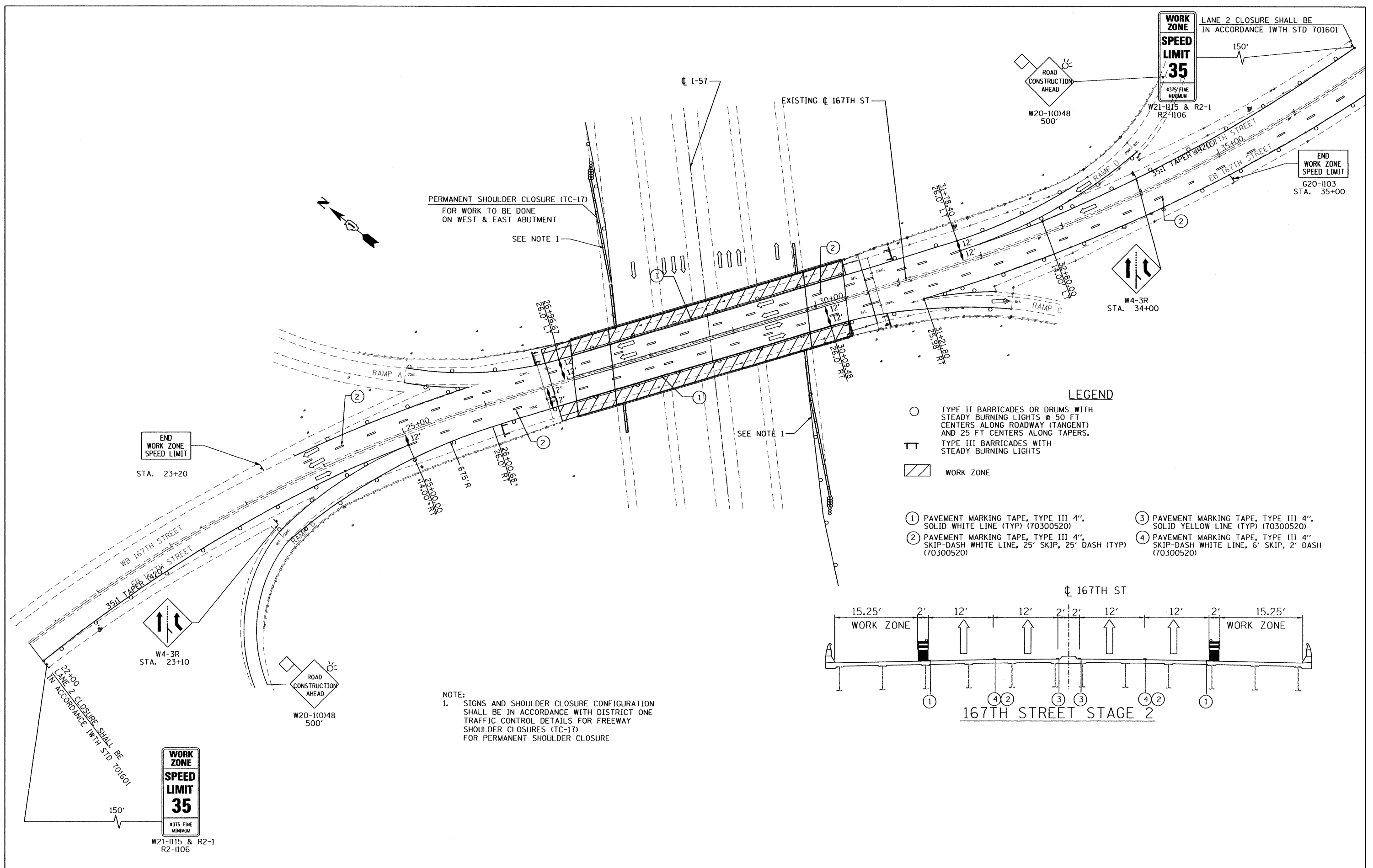


FILE NAME = P:\2007\ME07080\_Ver-Var-Plan\Cadd\W01\Bess\SH1.167\PM0702167.dwg  
 PLOT SCALE = 50.0000 : 1 IN.  
 USER NAME = Millennium Engineering



PERMANENT SHOULDER CLOSURE (TC-17)  
 FOR WORK TO BE DONE  
 ON WEST & EAST ABUTMENT  
 SEE NOTE 1

WORK ZONE  
 SPEED LIMIT 35  
 6375 FINE MINIMUM

LANE 2 CLOSURE SHALL BE  
 IN ACCORDANCE WITH STD 701601

END WORK ZONE  
 SPEED LIMIT  
 G20-1103  
 STA. 35+00

END WORK ZONE  
 SPEED LIMIT  
 STA. 23+20

W4-3R  
 STA. 23+10

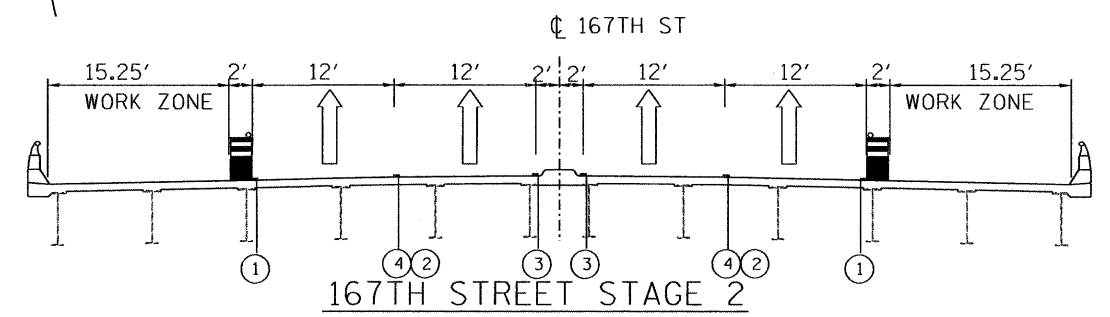
W20-1(0)48  
 500'

WORK ZONE  
 SPEED LIMIT 35  
 6375 FINE MINIMUM  
 W21-1115 & R2-1  
 R2-1106

NOTE:  
 1. SIGNS AND SHOULDER CLOSURE CONFIGURATION SHALL BE IN ACCORDANCE WITH DISTRICT ONE TRAFFIC CONTROL DETAILS FOR FREEWAY SHOULDER CLOSURES (TC-17) FOR PERMANENT SHOULDER CLOSURE

LEGEND

- TYPE II BARRICADES OR DRUMS WITH STEADY BURNING LIGHTS @ 50 FT CENTERS ALONG ROADWAY (TANGENT) AND 25 FT CENTERS ALONG TAPERS.
- TT TYPE III BARRICADES WITH STEADY BURNING LIGHTS
- ▨ WORK ZONE
- ① PAVEMENT MARKING TAPE, TYPE III 4", SOLID WHITE LINE (TYP) (70300520)
- ② PAVEMENT MARKING TAPE, TYPE III 4", SKIP-DASH WHITE LINE, 25' SKIP, 25' DASH (TYP) (70300520)
- ③ PAVEMENT MARKING TAPE, TYPE III 4", SOLID YELLOW LINE (TYP) (70300520)
- ④ PAVEMENT MARKING TAPE, TYPE III 4", SKIP-DASH WHITE LINE, 6' SKIP, 2' DASH (70300520)



**MILLENNIA ENGINEERING**  
 200 22ND Street, Suite 216, Lombard, IL 60148  
 630.705.0110 voice, 630.839.2566 fax  
 www.millenniaeng.com

DESIGNED - TVN	REVISED -
DRAWN - TVN	REVISED -
CHECKED - RPD	REVISED -
DATE - 1/22/2009	REVISED -

**STATE OF ILLINOIS  
 DEPARTMENT OF TRANSPORTATION**

<b>FAI 57/1-57 AT 167TH STREET</b>	
SCALE: 1"=50'	SHEET NO. 7 OF 21 SHEETS

<b>SUGGESTED STAGES OF CONSTRUCTION &amp; TRAFFIC CONTROL STAGE 2</b>	F.A.I. RTE. 57	SECTION 1011.31	COUNTY COOK	TOTAL SHEETS 21	SHEET NO. 7
CONTRACT NO. 60D63					

FED. ROAD DIST. NO. 1 [ILLINOIS] FED. AID PROJECT  
 P:\2007\ME07080\_Ver-Var-Plan\Cadd\W01\Bess\SH1.167\PM0702167.dwg