

F.A.I. RTE.	SECTION	COUNTY	TOTAL SHEETS	SHEET NO.
290	2007-057 T	COOK	60	1
FED. ROAD DIST. NO.	ILLINOIS	CONTRACT NO. 60D93		

**STATE OF ILLINOIS  
DEPARTMENT OF TRANSPORTATION  
DIVISION OF HIGHWAYS**

**PROPOSED  
HIGHWAY PLANS**

**F.A.I. ROUTE 290 (EISENHOWER EXPRESSWAY)  
@ I-290 EB RAMP AND AT DES PLAINES AVE  
SECTION: 2007-057 T  
DRAINAGE MODIFICATIONS**

**PROJECT: *IM-290-4(111)097***

**COOK COUNTY  
C-91-131-08**

RANGE 14E 3RD PM

FOR INDEX OF SHEETS, SEE SHEET NO. 2

**PROJECT LOCATED IN  
CITY OF CHICAGO**

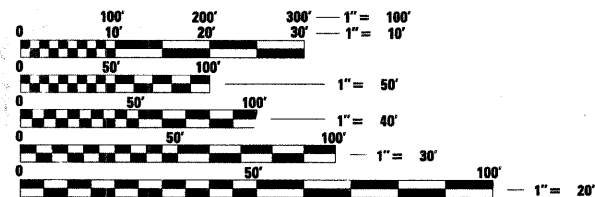
**TRAFFIC DATA**

**ADT: 191,000 (2007)**

**POSTED SPEED: 45 MPH**

**PROJECT DESCRIPTION:**

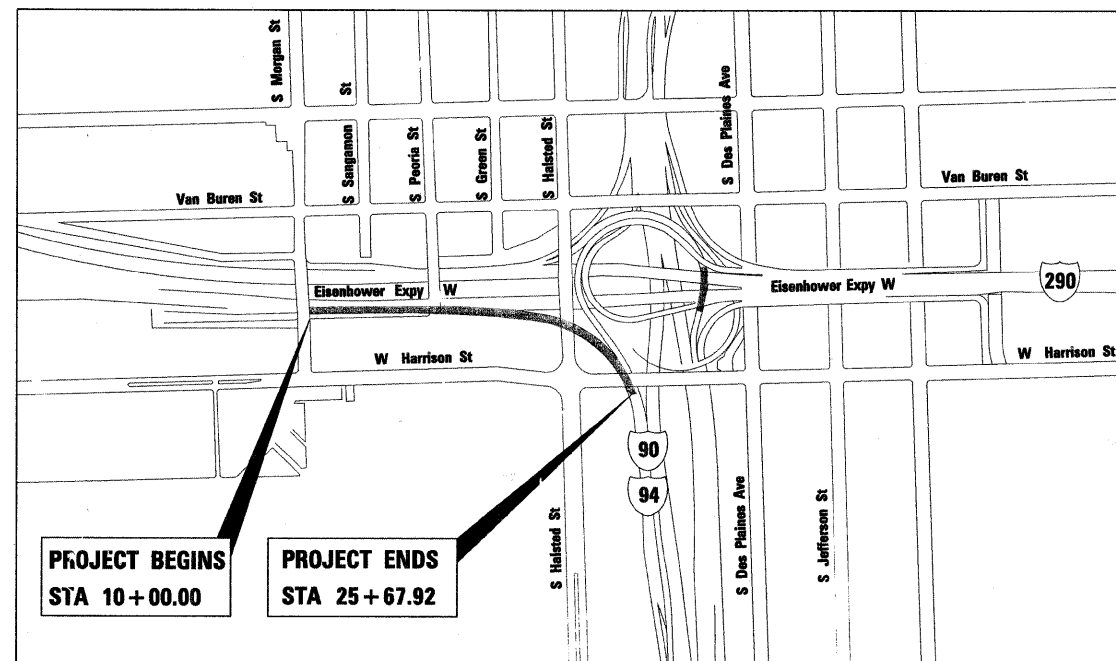
THE SCOPE OF WORK CONSISTS OF DRAINAGE MODIFICATIONS BY JACKING STORM SEWER UNDER EASTBOUND I-290, STORM SEWER INSTALLATION, NEW DRAINAGE STRUCTURES AND NEW BARRIER WALLS, NEW RETAINING WALL, SIGN TRUSS REPLACEMENT, PAVEMENT PATCHING, HMA SHOULDERS AND PAVEMENT MARKING AS REQUIRED.



FULL SIZE PLANS HAVE BEEN PREPARED USING STANDARD ENGINEERING SCALES. REDUCED SIZED PLANS WILL NOT CONFORM TO STANDARD SCALES IN MAKING MEASUREMENTS ON REDUCED PLANS THE ABOVE SCALES MAY BE USED.

**CUAN  
CHICAGO UTILITY AREA NETWORK  
312-744-7000**

**CONTRACT NO. 60D93**



**NET LENGTH OF PROJECT (I-290) = 1567.92 LIN FT = 0.297 MILES (EASTBOUND)**



**STATE OF ILLINOIS  
DEPARTMENT OF TRANSPORTATION  
DIVISION OF HIGHWAYS**

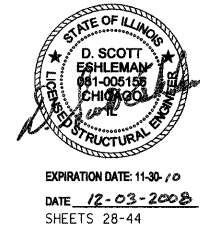
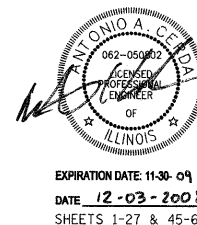
SUBMITTED DECEMBER 4, 2008

*Diana M. O'Keefe* DEPUTY DIRECTOR OF HIGHWAYS, P.E. **GINEER**

January 30, 2009  
*Charles J. Ingersoll* ENGINEER OF DESIGN AND ENVIRONMENT

January 30, 2009  
*Christine M. Reed* DIRECTOR OF HIGHWAYS, CHIEF ENGINEER

**PRINTED BY THE AUTHORITY  
OF THE STATE OF ILLINOIS**



DESIGN - CONSULTANT SERVICES - PROJECT MANAGER - BRIAN KUTTAB (847)705-4431