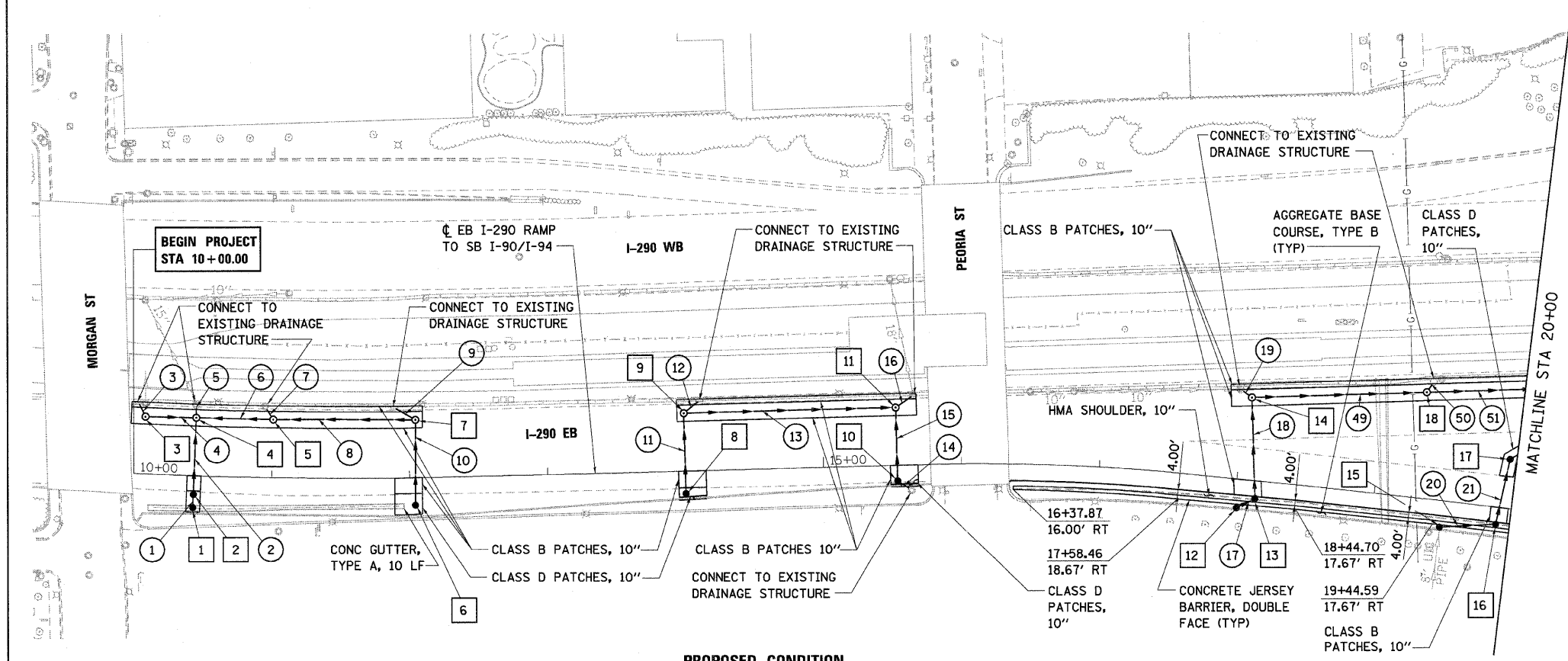
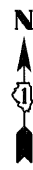


**EXISTING CONDITION**



**PROPOSED CONDITION**



- NOTES:**
1. CONNECT EXISTING STORM SEWER TO PROPOSED DRAINAGE STRUCTURE.
  2. SEE RETAINING WALL PLANS FOR EXACT DIMENSIONS OF SHOULDERS.
  3. SEE SHEET 9, SCHEDULE OF QUANTITIES FOR PIPE AND STRUCTURE TABLES.
  4. ALL EXISTING DRAINAGE STRUCTURES TO REMAIN IN SERVICE ARE TO BE CLEANED.

- LEGEND:**
- AB ABANDON STORM SEWER
  - F FILLING INLETS/CATCH BASINS/MANHOLES

FILE NAME =	USER NAME = 3690	DESIGNED - AAC	REVISED -
SN\11-CADD\01-sh\12.0160093-SHT-PLAN-01.dgn		DRAWN - ED	REVISED -
	PLOT SCALE = 50:1	CHECKED - AAC	REVISED -
	PLOT DATE = Friday, December 12, 2008	DATE - 12/12/2008	REVISED -

**STATE OF ILLINOIS  
DEPARTMENT OF TRANSPORTATION**

**EXISTING AND PROPOSED PLAN**

SCALE: 1"=50'    SHEET NO. 1 OF 2 SHEETS    STA. 10+00.00 TO STA. 25+67.92

F.A.I. RTE.	SECTION	COUNTY	TOTAL SHEETS	SHEET NO.
290	2007-057 T	COOK	60	12
FED. ROAD DIST. NO. ILLINOIS FED. AID PROJECT			CONTRACT NO. 60D93	