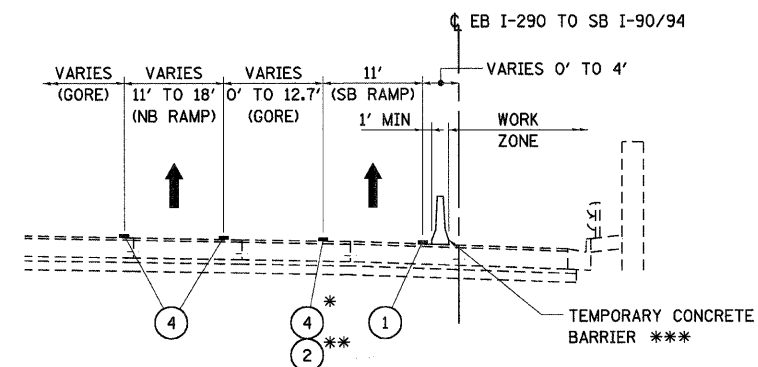


PROPOSED MOT STAGE 1A - EB I-290 MAINLINE AND RAMP TO I-90/94

STA 17+58 TO STA 21+00
LOOKING EASTBOUND



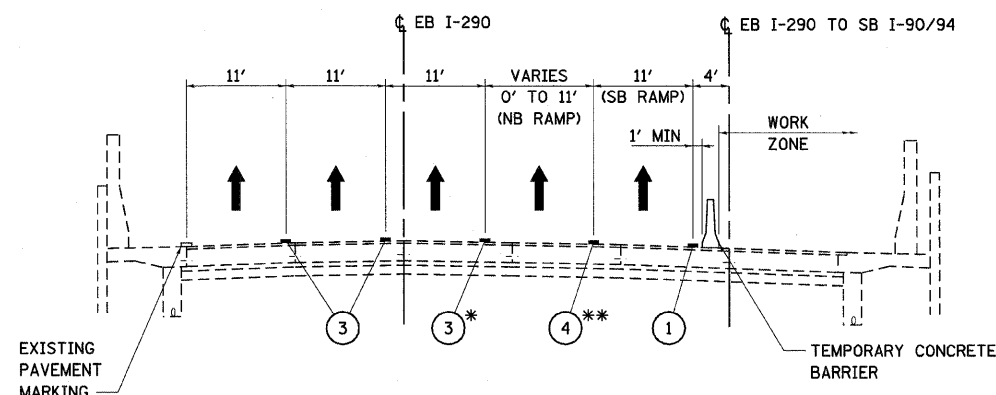
PROPOSED MOT STAGE 1B - EB I-290 RAMP TO NB AND SB I-90/94

STA 17+54 TO STA 26+51
LOOKING EASTBOUND

* PROPOSED ONLY FROM STA 17+54 TO STA 22+09

** PROPOSED ONLY FROM STA 22+09 TO STA 26+51

*** TEMPORARY CONC BARRIER STA 17+54 TO STA 24+77 AND
TYPE II BARRICADE OR DRUM STA 24+77 TO STA 26+51



PROPOSED MOT STAGE 1B - EB I-290 MAINLINE

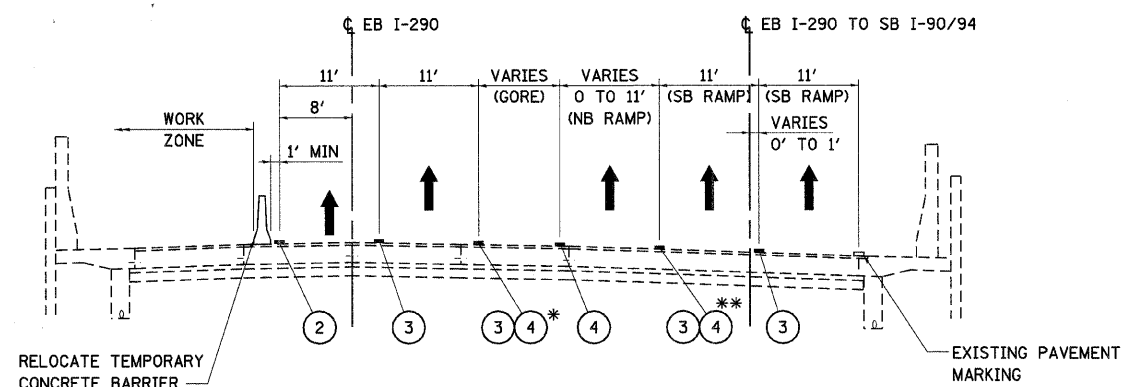
STA 8+15 TO STA 17+54
LOOKING EASTBOUND

* PROPOSED ONLY FROM STA 8+15 TO STA 14+69

** PROPOSED ONLY FROM STA 14+69 TO STA 17+54

MOT PAVEMENT MARKING LEGEND:

- ① PAVEMENT MARKING TAPE, TYPE III 4" (WHITE)
- ② PAVEMENT MARKING TAPE, TYPE III 4" (YELLOW)
- ③ PAVEMENT MARKING TAPE, TYPE III 5" (WHITE, 10' DASH - 30' SKIP)
- ④ PAVEMENT MARKING TAPE, TYPE III 8" (WHITE)
- ⑤ PAVEMENT MARKING TAPE, TYPE III 12" (WHITE)



PROPOSED MOT STAGE 2 - EB I-290 MAINLINE

STA 4+40 TO STA 20+98
LOOKING EASTBOUND

* USE PAVEMENT MARKING TAPE, TY III, 5" (③) FROM STA 4+40 TO STA 14+69
AND PAVEMENT MARKING, 8" TAPE, TY III (④) FROM STA 17+54 TO END

** USE PAVEMENT MARKING TAPE, TY III, 5" (③) FROM STA 4+40 TO STA 14+69
AND PAVEMENT MARKING, 8" TAPE, TY III (④) FROM STA 14+69 TO STA 20+98

LEGEND:

- EXISTING PAVEMENT MARKING
- - - TEMPORARY PAVEMENT MARKING OR PAVEMENT MARKING TAPE, TYPE III
- ⓪ PLASTIC DRUMS
- 50' C-C WITH STEADY BURN LIGHTS
- 100' C-C ON TANGENTS
- 50' C-C ON TAPERS AND LANE SHIFTS
- 25' C-C ON RAMP GORES
- ➔ TRAFFIC DIRECTION
- ▬ TEMPORARY CONCRETE BARRIER

FILE NAME = S:\11-CADD\01-sh\14-D160093-SHT-STAGING-TYPICAL.dgn	USER NAME = 3690	DESIGNED - DG	REVISED -
PLOT SCALE = 5:1		DRAWN - ED	REVISED -
PLOT DATE = Thursday, December 11, 2008		CHECKED - AAC	REVISED -
		DATE - 12/12/2008	REVISED -

**STATE OF ILLINOIS
DEPARTMENT OF TRANSPORTATION**

**SUGGESTED MAINTENANCE OF TRAFFIC
TYPICAL SECTIONS - SHEET 1 OF 2**

SCALE: NONE SHEET NO. 1 OF 9 SHEETS STA. 10+00.00 TO STA. 25+67.92

F.A.I. RTE. 290	SECTION 2007-057 T	COUNTY COOK	TOTAL SHEETS 60	SHEET NO. 14
FED. ROAD DIST. NO. ILLINOIS FED. AID PROJECT			CONTRACT NO. 60D93	