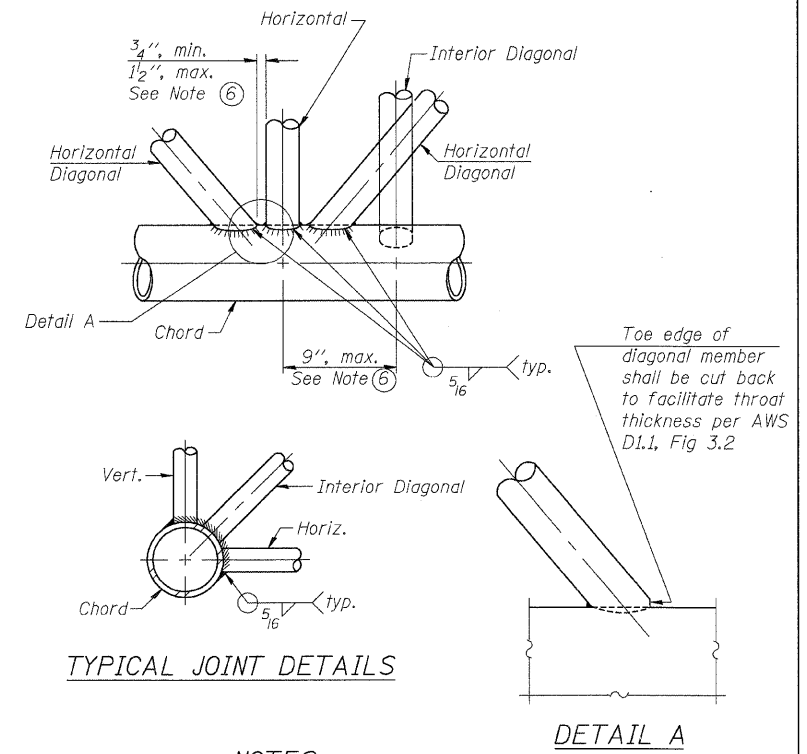
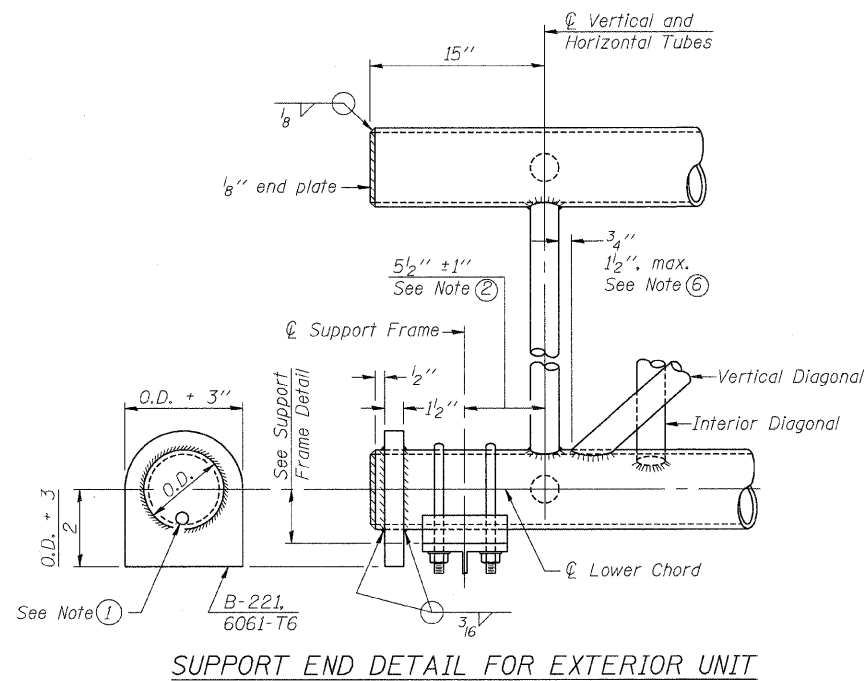
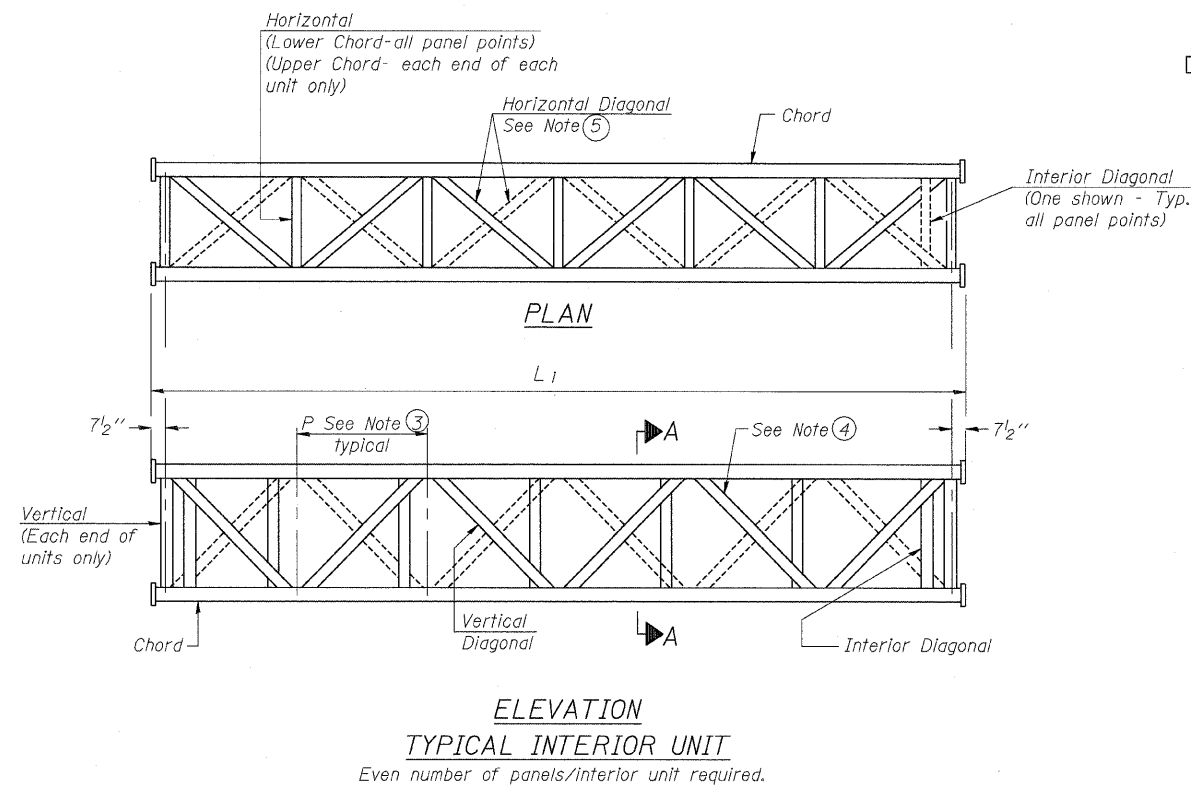


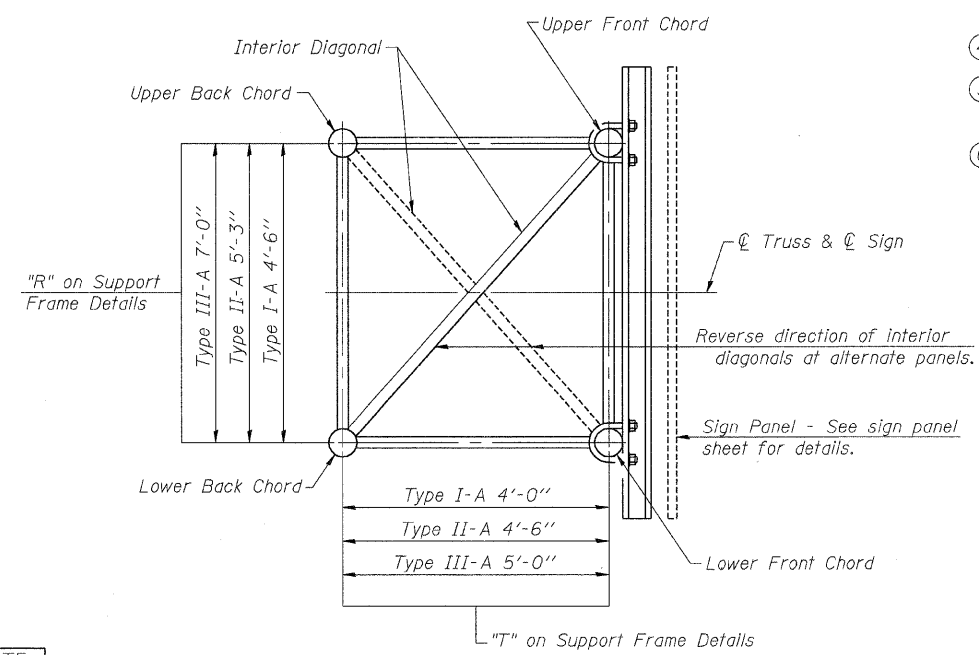
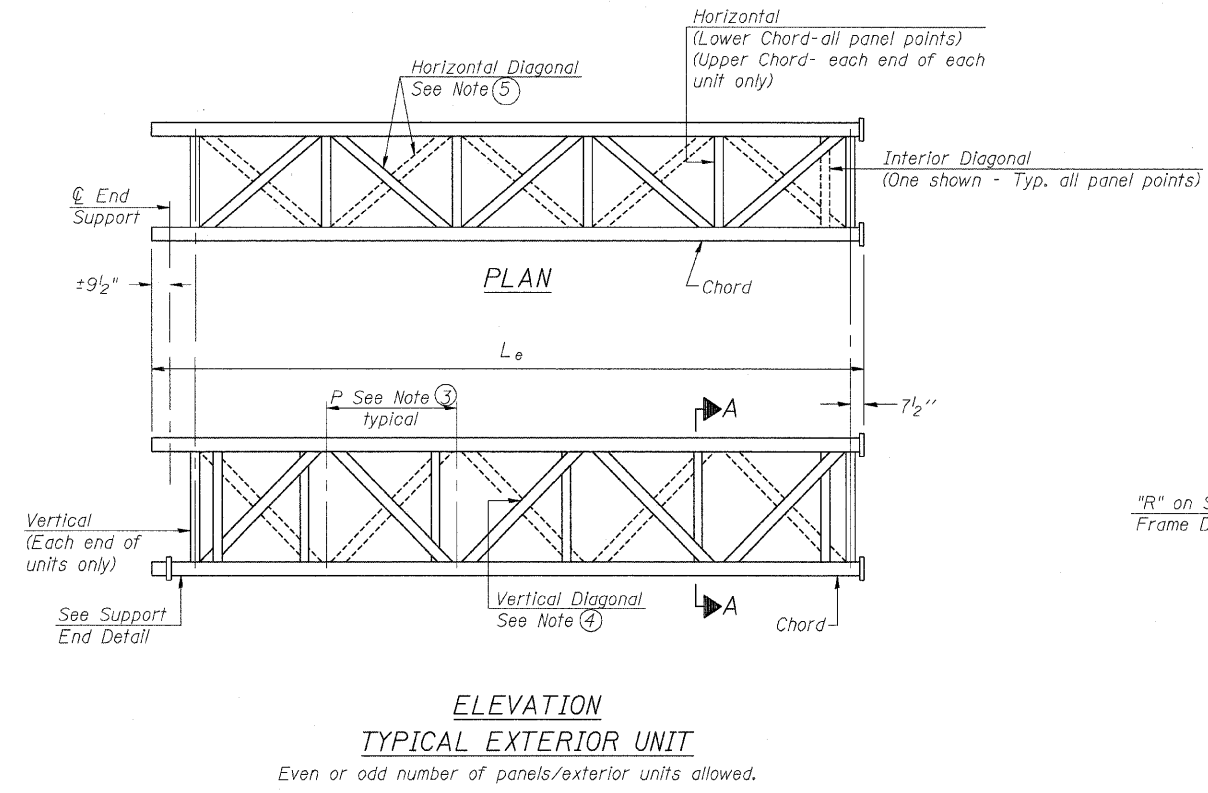
STATE OF ILLINOIS
DEPARTMENT OF TRANSPORTATION

ROUTE NO.	SECTION	COUNTY	SHEET NO.	SHEET	SHEET NO.
290	2007-057 T	COOK	60	31	13 SHEETS
FED. ROAD DIST. NO. 7		ILLINOIS	FED. AID PROJECT-		

Contract #60D93



- NOTES**
- Contractor may alternatively use standard aluminum drive-fit cap to close end. 1/2" ∅ drain hole in end plate/drive-fit cap. (Typ. at ends of all chords)
 - 5 1/2" end dimension may vary by ± 1" to provide uniform panel spacing (P).
 - Panel spacing (P) shall be uniform for entire truss and between 4'-0" and 5'-0" for Type I-A or 4'-0" and 5'-6" for Types II-A and III-A.
 - Vertical Diagonals in front and back face shall alternate.
 - Hidden lines show wind bracing alternates direction between planes of top and bottom chords.
 - All diagonals shall be detailed for minimum offset from the panel point based on the following: Offset shall be such as to provide a 3/4" minimum to 1 1/2" maximum clearance between any diagonal and any horizontal or vertical member, and to provide clearance for U-bolt connections of signs or walkway brackets.



**OVERHEAD SIGN STRUCTURES
ALUMINUM TRUSS DETAILS
FOR TRUSS TYPES I-A, II-A and III-A
CIRCLE INTERCHANGE SIGN STRUCTURE
I-94/I-290
FROM I-290 EB RAMP
TO DES PLAINES AVE
F.A.I. 94/290-SECT. (2007-057T)
COOK COUNTY**

DESIGNED - DSE	EXAMINED	NUMBER	REVISION	DATE
CHECKED - PT	PASSED			
DRAWN - RTT				
CHECKED - PT				
DATE - SEPT 24, 2008	OS-A-2 5/16/08			