

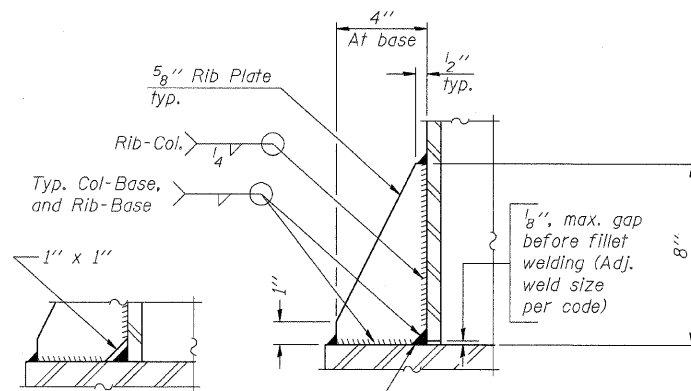
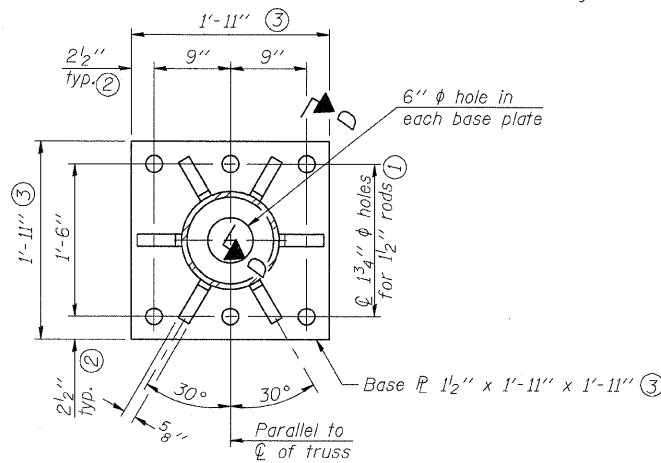
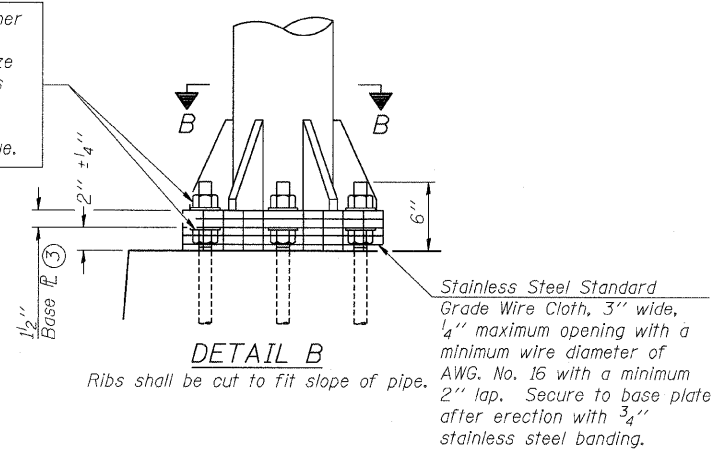
STATE OF ILLINOIS
DEPARTMENT OF TRANSPORTATION

ROUTE NO.	SECTION	COUNTY	STA. SHEETS	SHEET NO.
290	2007-057 T	COOK	60	35
FED. ROAD DIST. NO. 7	ILLINOIS	FED. AID PROJECT		

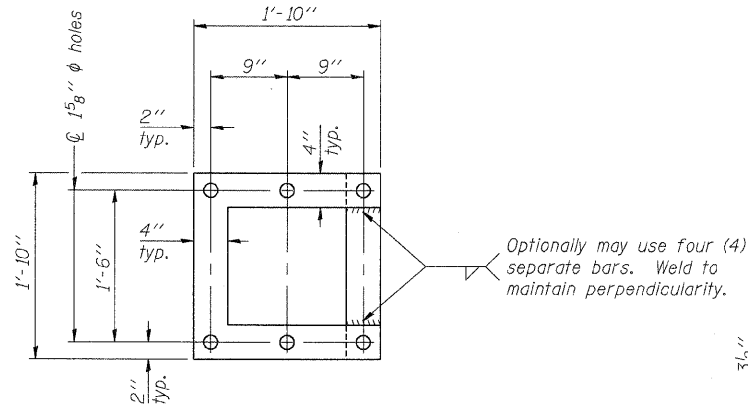
SHEET NO. 8
13 SHEETS

Contract #60D93

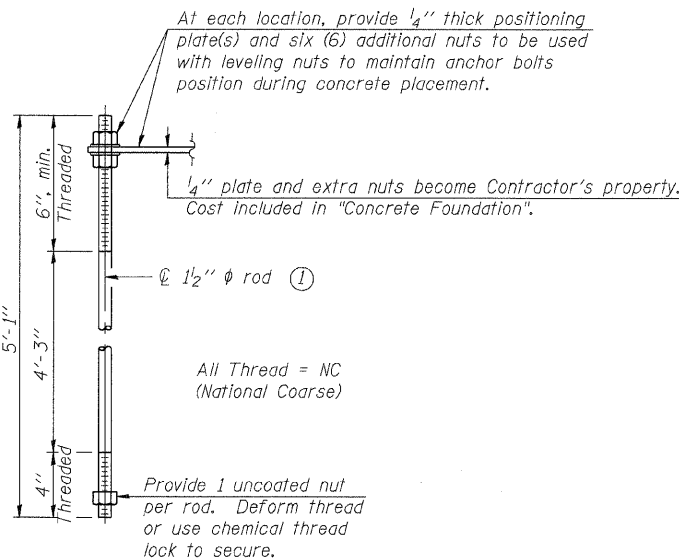
Hexagon locknut and washer (top), leveling nut and washer (bottom). Galvanize per AASHTO M232. Nuts shall each be tightened against base plate with 200 lb.-ft. minimum torque.



** Alternate detail if welding col. to base plate first, then snip inside corner of ribs. Terminate weld on rib 1/4" from snip.



POSITIONING PLATE(S)



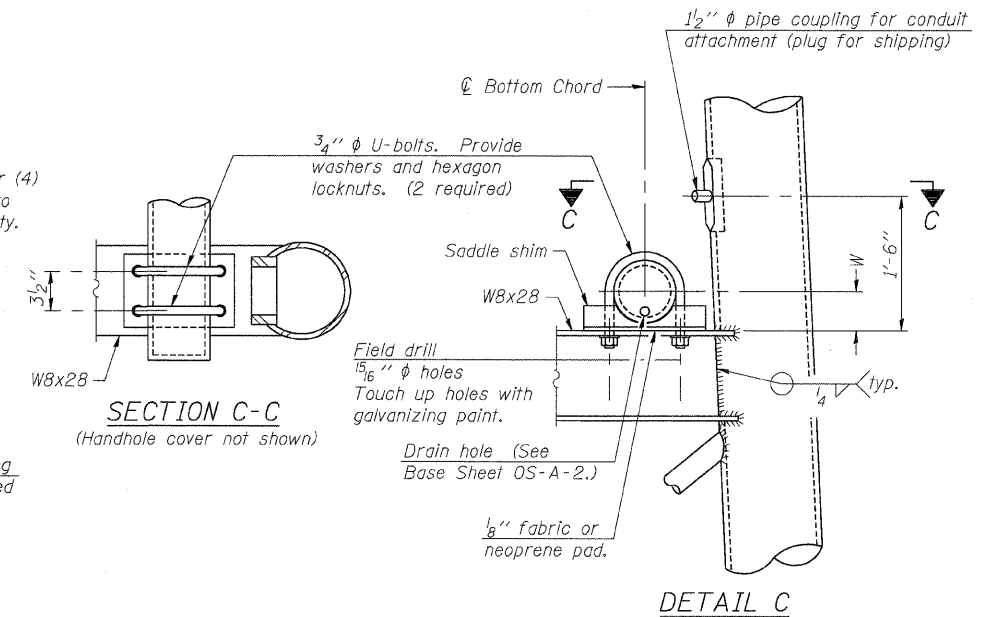
ANCHOR ROD DETAIL

Anchor rods shall conform to AASHTO M314 Grade 36 or 55 and meet Charpy V-Notch (CVN) energy of 15 lb.-ft. at 40° F. Galvanize upper 12" per AASHTO M232. No welding shall be permitted on rods.

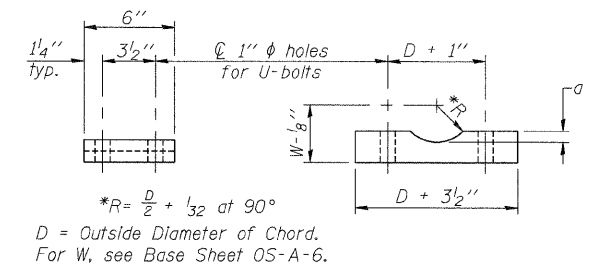
**TYPE III-A TRUSS
12" ϕ PIPE SUPPORT FRAME DETAILS**

Notes:
For Type III-A Truss spans greater than 150 ft. and up to 160 ft.:

- ① 1 3/4" ϕ rod, 2" ϕ holes
- ② 2 3/4" edge distance
- ③ Base Pl. 1 5/8" x 1 1/2" x 1 1/2"



**SECTION C-C
(Handhole cover not shown)**



Truss Chord Nominal Dia.	a
7"	1"
8 1/2"	1 1/4"
9"	1 3/8"

SADDLE SHIM DETAIL
ASTM B26 Alloy 356-F
or
ASTM B209 Alloy 6061-T651
(4 required per sign truss)

DESIGNED - DSE	200
CHECKED - PT	EXAMINED
DRAWN - RTT	PASSED
CHECKED - PT	ENGINEER OF BRIDGE DESIGN
DATE - SEPT 24, 2008	ENGINEER OF BRIDGES AND STRUCTURES

DESIGNED - DSE	200
CHECKED - PT	EXAMINED
DRAWN - RTT	PASSED
CHECKED - PT	ENGINEER OF BRIDGE DESIGN
DATE - SEPT 24, 2008	ENGINEER OF BRIDGES AND STRUCTURES

NUMBER	REVISION	DATE

OS4-A-8aA 5/16/08

OVERHEAD SIGN STRUCTURES
SUPPORT FRAME for TYPE III-A ALUMINUM TRUSS

CIRCLE INTERCHANGE SIGN STRUCTURE
I-94/I-290
FROM I-290 EB RAMP
TO DES PLAINES AVE
F.A.I. 94/290-SECT. (2007-057T)
COOK COUNTY