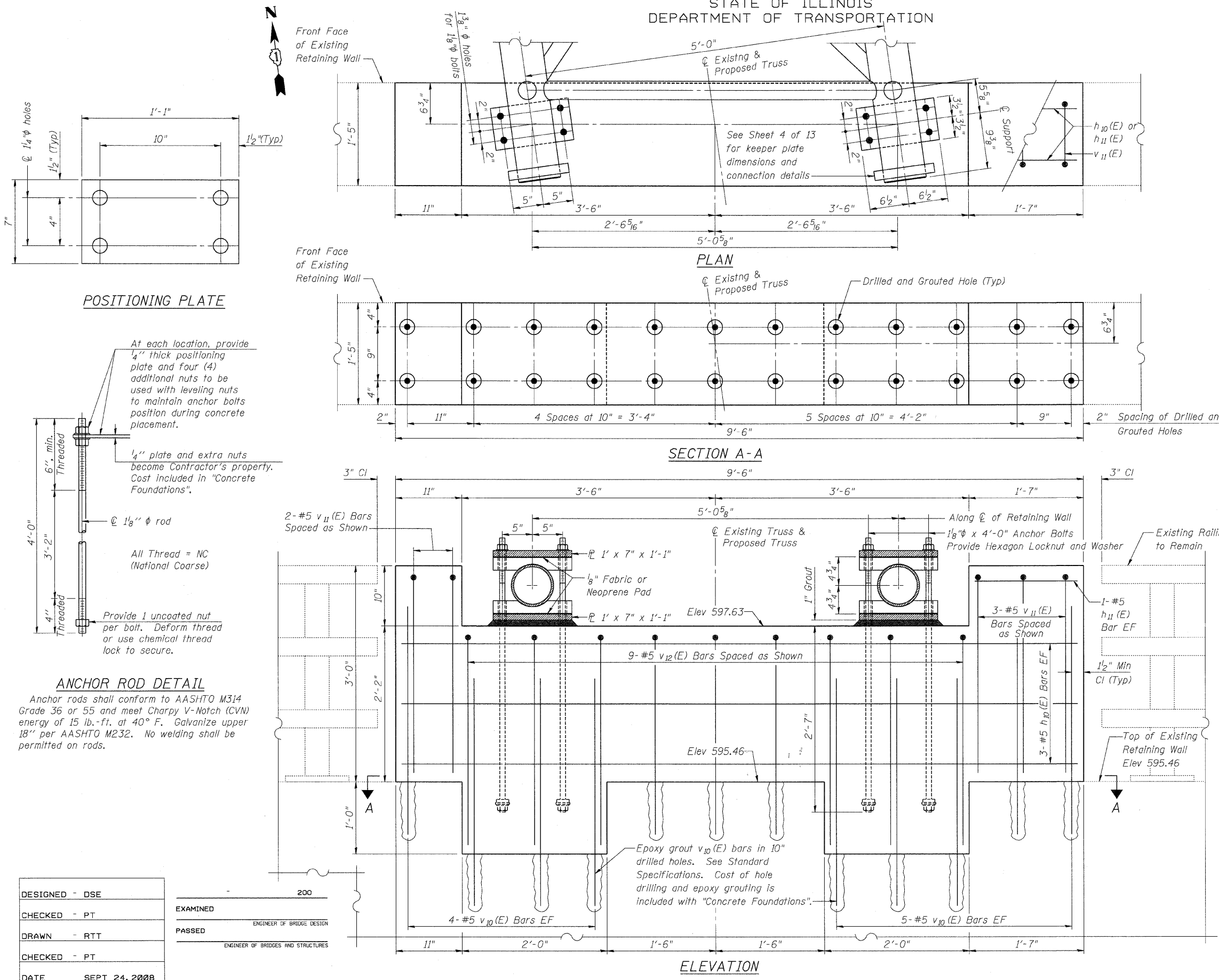


STATE OF ILLINOIS  
DEPARTMENT OF TRANSPORTATION

ROUTE NO.	SECTION	COUNTY	STA. SHEETS	SHEET NO.
290	2007-057 T	COOK	60	39
FED. ROAD DIST. NO. 7		ILLINOIS	FED. AID PROJECT-	

Contract #60D93

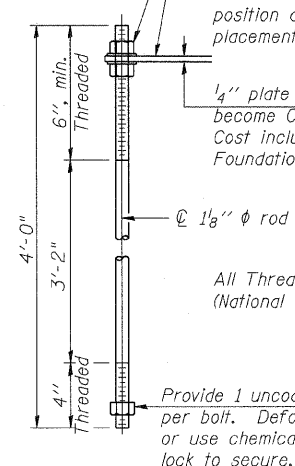
SHEET NO. 12  
13 SHEETS



**POSITIONING PLATE**

At each location, provide 1/4" thick positioning plate and four (4) additional nuts to be used with leveling nuts to maintain anchor bolts position during concrete placement.

1/4" plate and extra nuts become Contractor's property. Cost included in "Concrete Foundations".

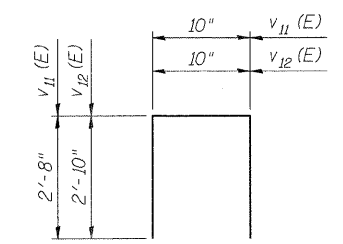


**ANCHOR ROD DETAIL**

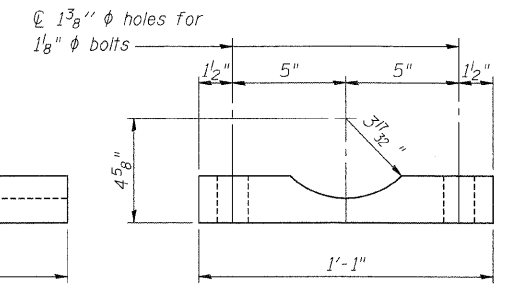
Anchor rods shall conform to AASHTO M314 Grade 36 or 55 and meet Charpy V-Notch (CVN) energy of 15 lb.-ft. at 40° F. Galvanize upper 18" per AASHTO M232. No welding shall be permitted on rods.

**BAR LIST**

Bar	Number	Size	Length	Shape
$h_{10}(E)$	6	#5	9'-2"	—
$h_{11}(E)$	2	#5	1'-3"	—
$v_{10}(E)$	18	#5	3'-2"	—
$v_{11}(E)$	5	#5	6'-2"	□
$v_{12}(E)$	9	#5	6'-6"	□



**BARS  $v_{11}(E)$  &  $v_{12}(E)$**



**SADDLE SHIM DETAIL**



OVERHEAD SIGN STRUCTURES  
RIGHT SUPPORT DETAILS

CIRCLE INTERCHANGE SIGN STRUCTURE  
I-94/I-290  
FROM I-290 EB RAMP  
TO DES PLAINES AVE  
F.A.I. 94/290-SECT. (2007-057T)  
COOK COUNTY

DESIGNED - DSE	200
CHECKED - PT	
DRAWN - RTT	
CHECKED - PT	
DATE	SEPT 24, 2008

EXAMINED  
PASSED  
ENGINEER OF BRIDGE DESIGN  
ENGINEER OF BRIDGES AND STRUCTURES