

F.A.P. RTE.	SECTION	COUNTY	TOTAL SHEETS	SHEET NO.
377	2008-003 RS	COOK	27	1
FED. ROAD DIST. NO. 1		ILLINOIS	CONTRACT NO. 60E22	

STATE OF ILLINOIS
DEPARTMENT OF TRANSPORTATION
DIVISION OF HIGHWAYS

FOR INDEX OF SHEETS, SEE SHEET NO. 2

DESIGN DESIGNATION: OTHER PRINCIPAL ARTERIAL
POSTED SPEED : 30-35 M.P.H.
2005 ADT = 30,000
2006 ADT = 12,200 (CHICAGO AVE. TO JUDSON AVE.)

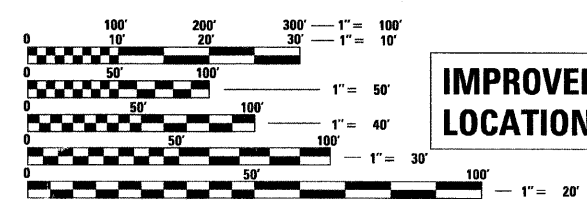
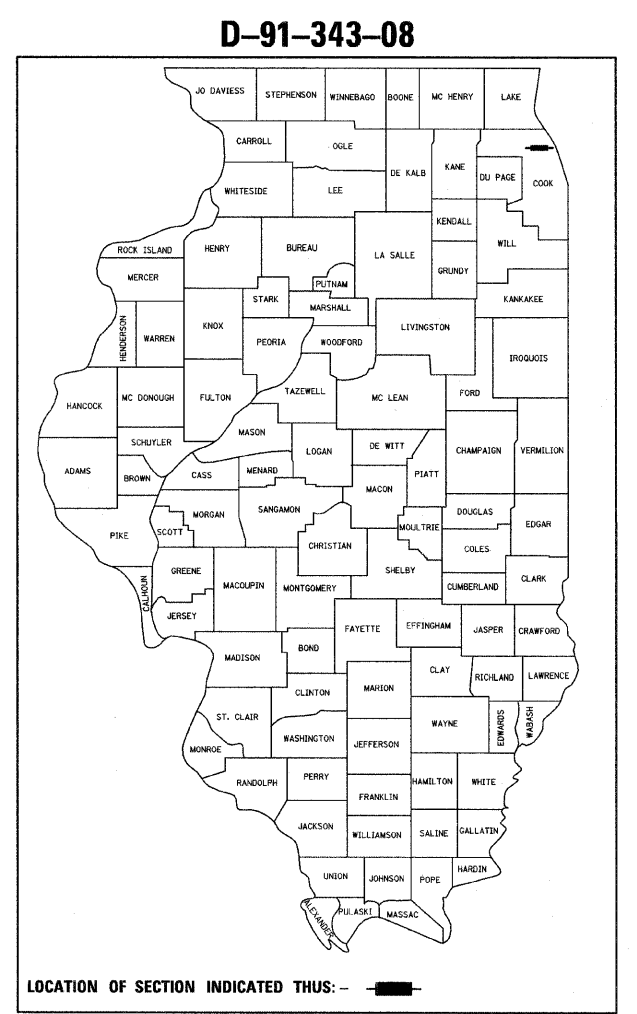
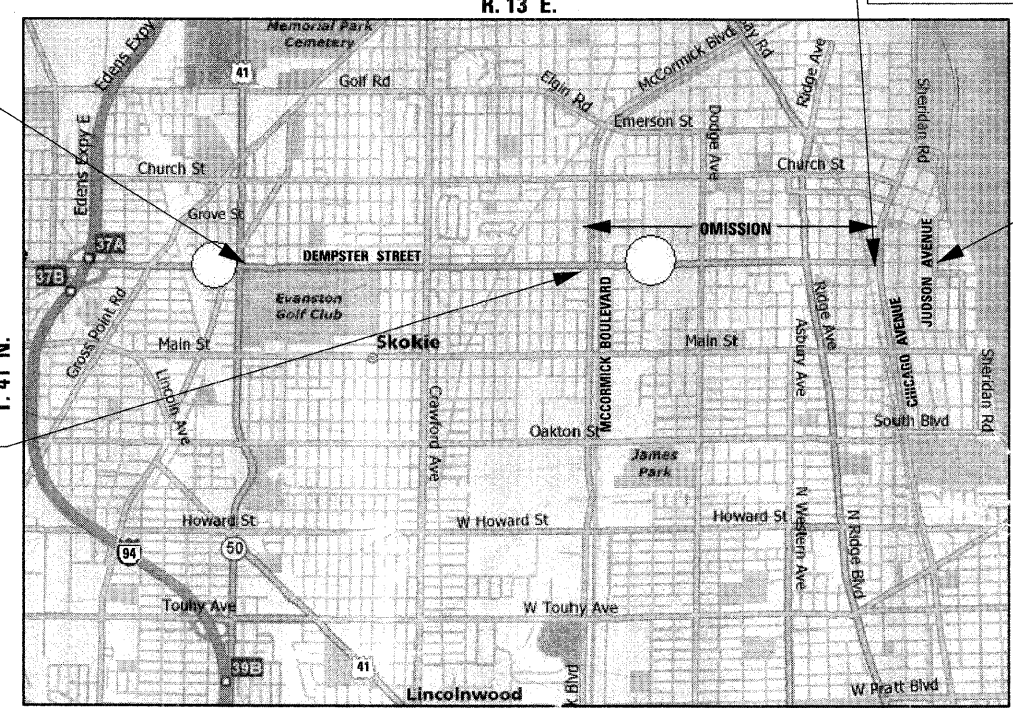
**IMPROVEMENT LOCATED
 IN THE VILLAGE OF SKOKIE
 AND CITY OF EVANSTON**

**PROPOSED
 HIGHWAY PLANS**
F.A.P. 377 / F.A.U. 3727 / DEMPSTER ST.
SECTION: 2008-003 RS
1) U.S. RTE. 41 TO MCCORMICK BLVD.
2) CHICAGO AVE. TO JUDSON AVE.
RESURFACING (3P)
PROJECT: ESP-000S(660)
COUNTY: COOK
C-91-343-08
NILES TOWNSHIP & EVANSTON TOWNSHIP
R. 13 E.

**IMPROVEMENT BEGINS
 LOCATION 2: STA. 4 + 05**
**IMPROVEMENT ENDS
 LOCATION 2: STA. 13 + 90**

**IMPROVEMENT BEGINS
 LOCATION 1: STA. 14 + 95**

**IMPROVEMENT ENDS
 LOCATION 1: STA. 111 + 20**



FULL SIZE PLANS HAVE BEEN PREPARED USING STANDARD ENGINEERING SCALES. REDUCED SIZED PLANS WILL NOT CONFORM TO STANDARD SCALES. IN MAKING MEASUREMENTS ON REDUCED PLANS, THE ABOVE SCALES MAY BE USED.

J.U.L.I.E.
JOINT UTILITY LOCATION INFORMATION FOR EXCAVATION
 1-800-892-0123
 OR 811

LOCATION 1: GROSS LENGTH OF PROJECT = 9,625.00 FEET = 1.823 MILES
NET LENGTH OF PROJECT = 9,625.00 FEET = 1.823 MILES
LOCATION 2: GROSS LENGTH OF PROJECT = 985 FEET = 0.187 MILES
NET LENGTH OF PROJECT = 985 FEET = 0.187 MILES

DISTRICT ONE - DESIGN
PROJECT MANAGER : ISAAC KWARTENG (847) 705-4230
PROJECT ENGINEER : RON ZENAROSA (847) 705-4212
CONTRACT NO. 60E22

DESIGN SECTION ENGINEER :
CHRISTIAN ROGE & ASSOCIATES, INC.
 ENGINEERS - PLANNERS - SURVEYORS
 211 W. WACKER DRIVE CHICAGO, IL 60606
 TELEPHONE: 312-372-2023



Birinder S. Sachdeva
BIRINDER S. SACHDEVA, P.E.
 EXPIRES: 11-30-2009
January 23, 2009
 DATE

STATE OF ILLINOIS
DEPARTMENT OF TRANSPORTATION
DIVISION OF HIGHWAYS

SUBMITTED JANUARY 28, 2009
Diana M. O'Keefe
 DEPUTY DIRECTOR OF HIGHWAYS, REGION ONE ENGINEER
March 27, 2009
Charles J. Ingersoll
 ENGINEER OF DESIGN AND ENVIRONMENT
March 27, 2009
Christie M. Reed
 DIRECTOR OF HIGHWAYS, CHIEF ENGINEER

**PRINTED BY THE AUTHORITY
 OF THE STATE OF ILLINOIS**