

F.A.P. RTE.	SECTION	COUNTY	TOTAL SHEETS	SHEET NO.
352	56 RS-8	LAKE	39	1
FED. ROAD DIST. NO. 1	ILLINOIS	CONTRACT NO. G0E23		

STATE OF ILLINOIS
DEPARTMENT OF TRANSPORTATION
DIVISION OF HIGHWAYS

PROPOSED
HIGHWAY PLANS

F.A.P. 352 / IL 137
SECTION: 56 RS-8
MARTIN LUTHER KING DRIVE TO WEST OF U.S. 41
RESURFACING (3P)
PROJECT: ESP-0352 (012)
LAKE COUNTY
C-91-344-08

SHIELDS TOWNSHIP
R. 12 E.

FOR INDEX OF SHEETS, SEE SHEET NO. 2

DESIGN DESIGNATION:
POSTED SPEED : 30 TO 50 M.P.H.
2008 ADT = 23,000

PROJECT LOCATED IN THE CITY OF NORTH CHICAGO



DISTRICT ONE - DESIGN PROJECT MANAGER: ISAAC KWARTENG (847) 705-4230

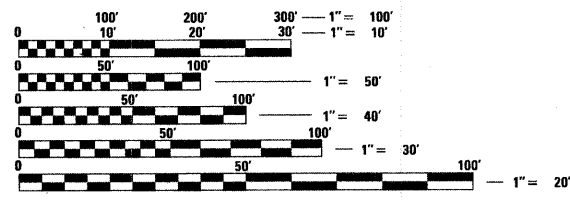
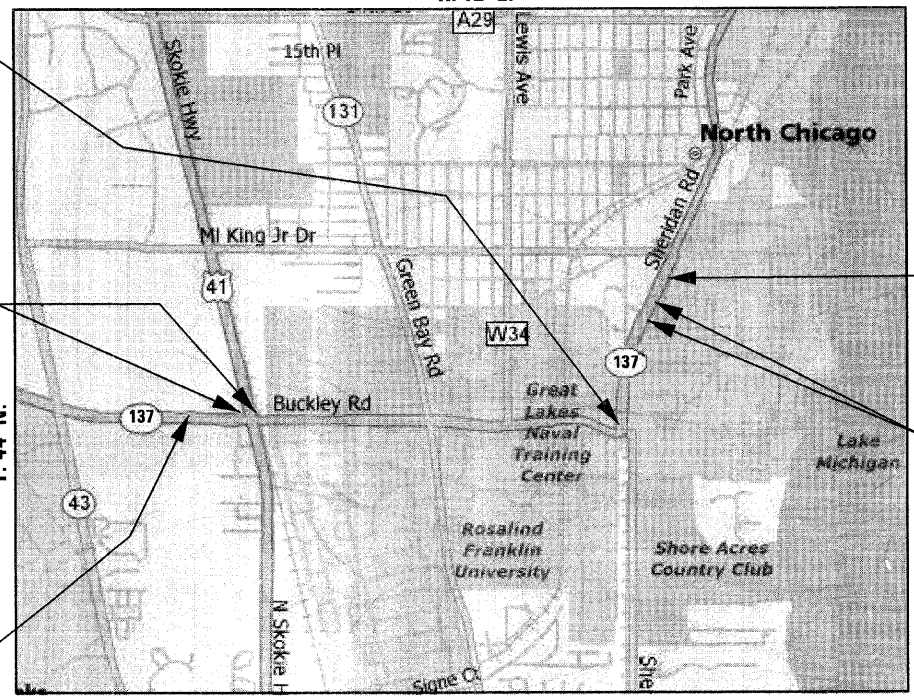
STATION EQUATION
STA. 123 + 44 = STA. 0 + 50

OMISSION IL 137
STA. 41 + 39.7 TO
STA. 42 + 20.2

PROJECT ENDS
STA. 39 + 26

OMISSION IL 137
STA. 27 + 00 TO
STA. 30 + 00

PROJECT BEGINS
STA. 26 + 24.7



FULL SIZE PLANS HAVE BEEN PREPARED USING STANDARD ENGINEERING SCALES. REDUCED SIZED PLANS WILL NOT CONFORM TO STANDARD SCALES. IN MAKING MEASUREMENTS ON REDUCED PLANS, THE ABOVE SCALES MAY BE USED.

J.U.L.I.E.
JOINT UTILITY LOCATING INFORMATION FOR EXCAVATORS
1-800-892-0123
OR 811

GROSS LENGTH OF PROJECT = 13,595.30 FEET = 2.575 MILES
NET LENGTH OF PROJECT = 13,214.80 FEET = 2.503 MILES

STATE OF ILLINOIS
DEPARTMENT OF TRANSPORTATION
DIVISION OF HIGHWAYS

SUBMITTED JANUARY 9, 2009
Diane M. O'Keefe DEPUTY DIRECTOR OF HIGHWAYS, REGION ONE ENGINEER
March 27, 2009
Charles J. Ingersoll ENGINEER OF DESIGN AND ENVIRONMENT
March 27, 2009
Christine M. Reed DIRECTOR OF HIGHWAYS, CHIEF ENGINEER



Birinder S. Sachdeva January 8, 2009
BIRINDER S. SACHDEVA, P.E. DATE
EXPIRES: 11-30-2009

DESIGN SECTION ENGINEER :
CHRISTIAN-ROGE & ASSOCIATES, INC.
ENGINEERS - PLANNERS - SURVEYORS
211 W. WACKER DRIVE CHICAGO, IL. 60606
TELEPHONE: 312-372-2023

CONTRACT NO. 60E23

PRINTED BY THE AUTHORITY
OF THE STATE OF ILLINOIS