

RESURFACING - TRAFFIC SIGNAL SCHEDULE OF QUANTITIES

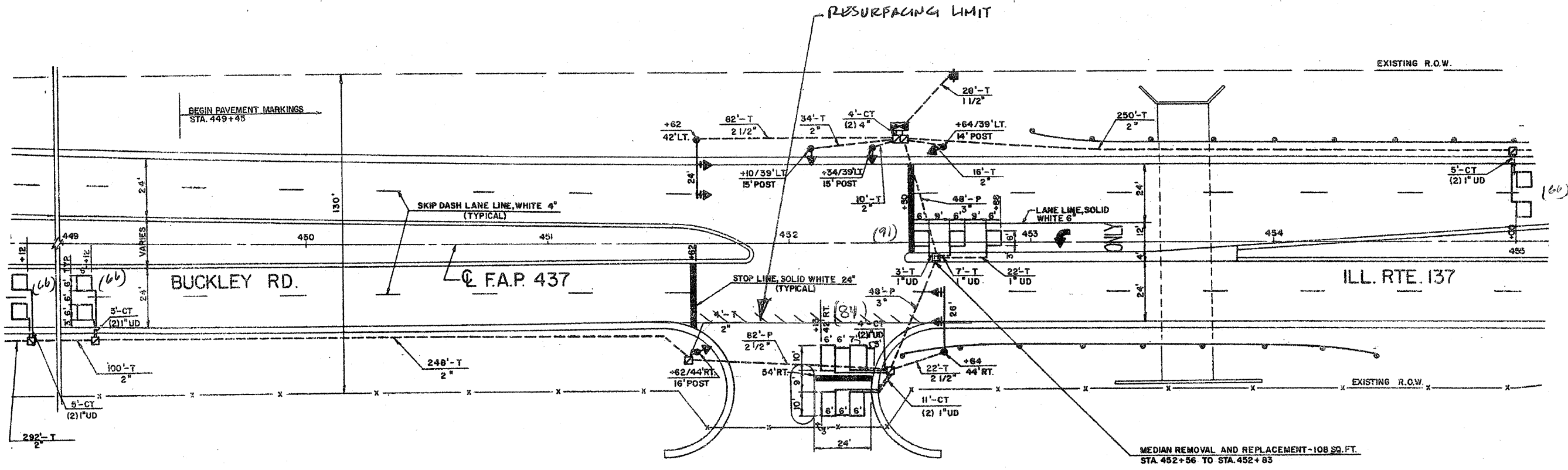
The "Pay Items" below are paid separately as per the attached "Specification" for MAGNETIC DETECTOR REMOVAL AND DETECTOR LOOP INSTALLATION.

Code No.	Pay Item	Unit	Quantity
85000200	MAINTENANCE OF EXISTING TRAFFIC SIGNAL INSTALLATION	EACH	
87301305	ELECTRIC CABLE IN CONDUIT, LEAD-IN, NO. 14 1 PAIR	FOOT	
88500100	INDUCTIVE LOOP DETECTOR	EACH	
88600100	DETECTOR LOOP, TYPE 1	FOOT	

NOTE:
THIS PLAN IS FOR THE PURPOSE OF REPLACING THE DETECTOR LOOPS ONLY. ALL OTHER INFORMATION SHOWN IS NOT RELATED AND WILL BE DISREGARDED.

TRAFFIC SIGNAL LEGEND

- CONTROLLER
- SERVICE INSTALLATION
- SIGNAL HEAD
- SIGNAL HEAD WITH BACKPLATE
- SIGNAL POST
- MAST ARM ASSEMBLY AND POLE, STEEL
- HANDHOLE
- HEAVY DUTY HANDHOLE
- DOUBLE HANDHOLE
- G.S. CONDUIT IN TRENCH OR PUSHED
- DETECTOR LOOP
- COMMON TRENCH
- UNIT DUCT



REPLACE ALL DETECTOR LOOPS AS SHOWN
(WITHIN THE RESURFACING LIMITS)

CODE NO.	QUANTITY	UNIT	ITEM
86600600	373	FOOT	DETECTOR LOOP REPLACEMENT

FILE NAME: \\projects\traffic\070027\us12.20.45.dwg	USER NAME: kanthapthyba	DESIGNED: -	REVISED: -	STATE OF ILLINOIS DEPARTMENT OF TRANSPORTATION	DETECTOR LOOP REPLACEMENT ILL. RTE. 137 @ MISSISSIPPI ST.	F.A. RTE.:	SECTION:	COUNTY:	TOTAL SHEETS:	SHEET NO.:
PLOT SCALE: 10.0000 / IN.	CHECKED: -	REVISED: -	352			56	RS-B	LAKE	39	14
PLOT DATE: 2/29/2008	DATE: -	REVISED: -	CONTRACT NO. 60E23							
SCALE:		SHEET NO. OF SHEETS				STA. TO STA.		FED. ROAD DIST. NO. ILLINOIS FED. AID PROJECT		