

F.A.P. RTE.	SECTION	COUNTY	TOTAL SHEETS	SHEET NO.
573	117 R-2B-R	KANE	40	1
FED. ROAD DIST. NO. 1		ILLINOIS	CONTRACT NO. 60E63	

STATE OF ILLINOIS
DEPARTMENT OF TRANSPORTATION
DIVISION OF HIGHWAYS

**PROPOSED
HIGHWAY PLANS**

F.A.P. 573 / U.S. 30
SECTION: 117 R-2B-R
AT E. & W. BRANCH BIG ROCK CREEK
BRIDGE DECK REPAIR

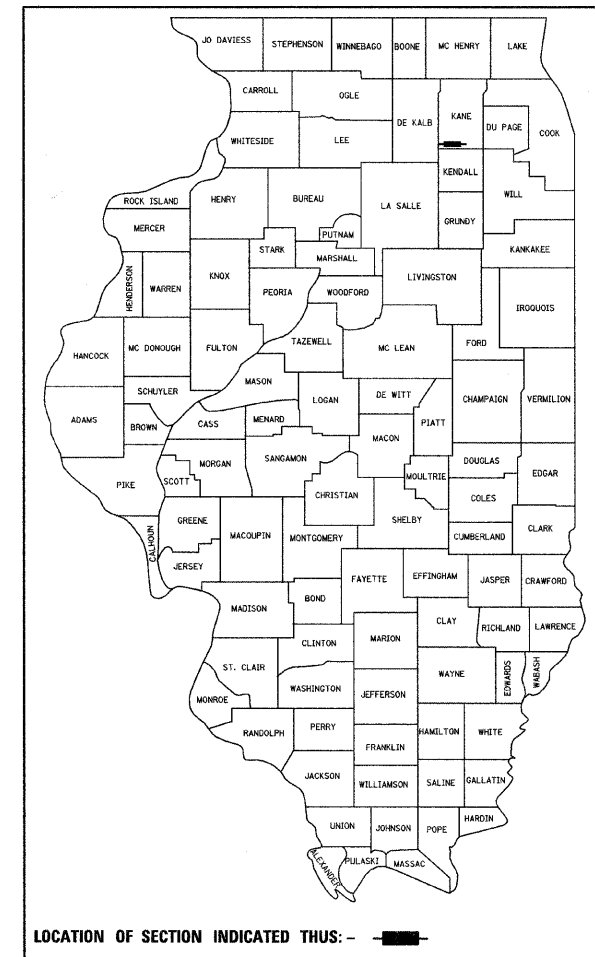
COUNTY: KANE
C-91-497-08
BIG ROCK TOWNSHIP
R. 6 E.

FOR INDEX OF SHEETS, SEE SHEET NO. 2

DESIGN DESIGNATION:
RURAL - OTHER PRINCIPAL ARTERIAL
SPEED LIMIT : 55 MPH
2007 ADT = 7,100

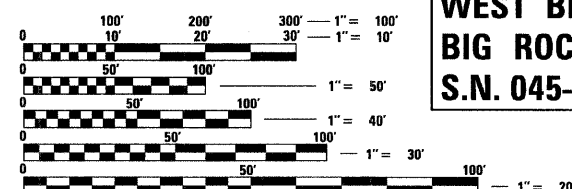
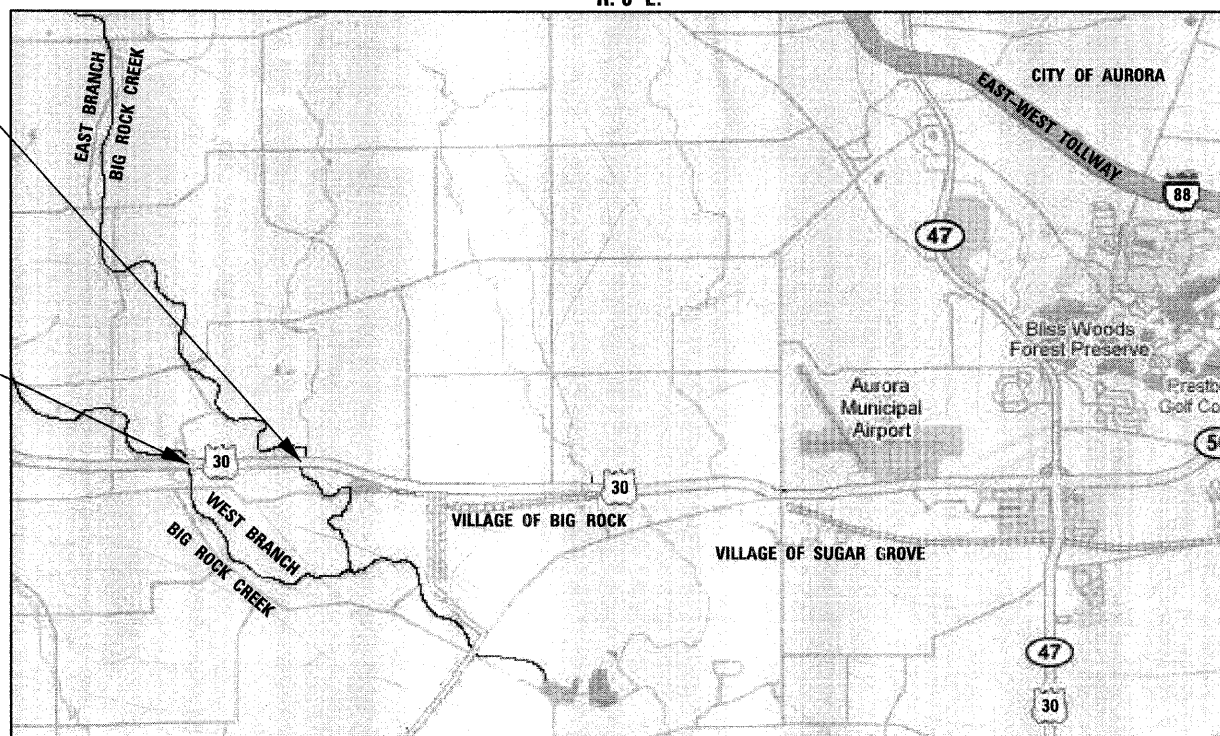
PROJECT LOCATED IN THE
VILLAGE OF BIG ROCK

D-91-497-08



2) LOCATION:
U.S. 30 OVER
EAST BRANCH
BIG ROCK CREEK
S.N. 045-2006

1) LOCATION:
U.S. 30 OVER
WEST BRANCH
BIG ROCK CREEK
S.N. 045-2005



FULL SIZE PLANS HAVE BEEN PREPARED USING STANDARD ENGINEERING SCALES. REDUCED SIZED PLANS WILL NOT CONFORM TO STANDARD SCALES. IN MAKING MEASUREMENTS ON REDUCED PLANS, THE ABOVE SCALES MAY BE USED.

J.U.L.I.E.
JOINT UTILITY LOCATING INFORMATION FOR EXCAVATORS
1-800-892-0123
OR 811

DISTRICT ONE - PLAN PREP ENGINEER:
KEN ENG (847) 705-4247

CONTRACT NO. 60E63

LOCATION 1) GROSS & NET LENGTH OF PROJECT = 295.00 FEET = 0.056 MILES
LOCATION 2) GROSS & NET LENGTH OF PROJECT = 244.00 FEET = 0.046 MILES

CHRISTIAN-ROGE & ASSOCIATES, INC.
ENGINEERS - PLANNERS - SURVEYORS
211 W. WACKER DRIVE CHICAGO, IL 60606
TELEPHONE: 312-372-2023

T. 38 N.



STATE OF ILLINOIS
DEPARTMENT OF TRANSPORTATION
DIVISION OF HIGHWAYS

SUBMITTED JANUARY 23, 2009

Diana M. O'Keefe DEPUTY DIRECTOR OF HIGHWAYS, REGION ONE ENGINEER
March 27, 2009

Charles J. Ingersoll ENGINEER OF DESIGN AND ENVIRONMENT
March 27, 2009

Christine M. Reed DIRECTOR OF HIGHWAYS, CHIEF ENGINEER

Birinder S. Sachdeva January 21, 2009
BIRINDER S. SACHDEVA, P.E.
EXPIRES: 11-30-2009

Bhadresh N. Shah JANUARY 21, 2009
BHADRESH N. SHAH, S.E., P.E.
EXPIRES: 11-30-2010

PRINTED BY THE AUTHORITY
OF THE STATE OF ILLINOIS