

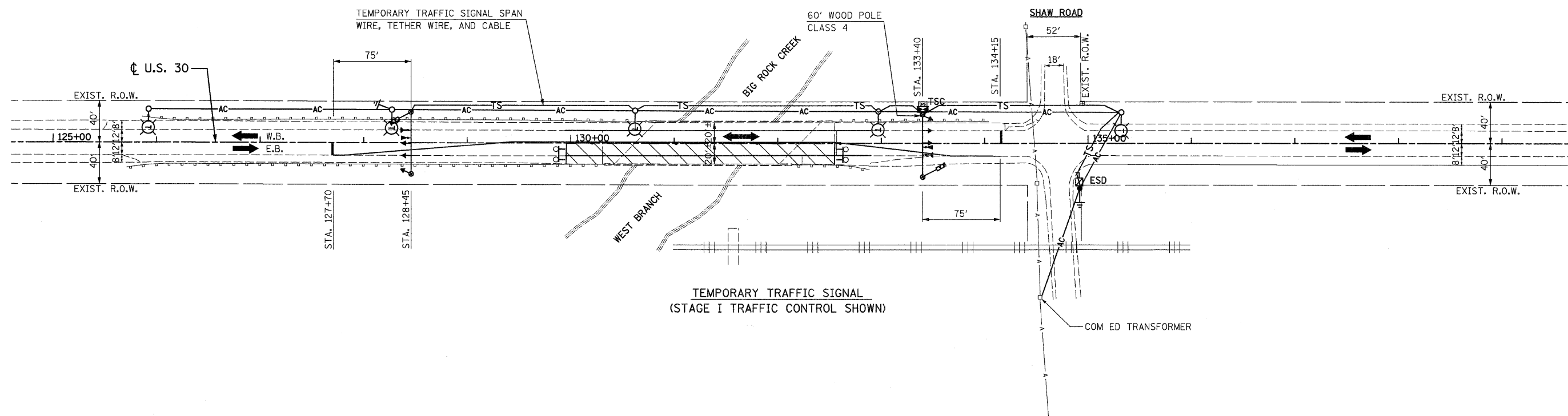


TEMPORARY LIGHTING LEGEND

- | | | |
|-----------------|-----------------|--|
| EXISTING | PROPOSED | |
| —A— | ⊗ | 400W, 120V, MCIII HPS. WITH PHOTO CELL 15' MA, 50 MH ON WOOD POLE, |
| | — | AERIAL LINE (COMED/TELEPHONE) |
| | TL-1 ⊗ | WOODEN POLE (60' WOODEN CLASS 4) WITH TEMPORARY LIGHTING UNIT |
| | —AC— | AERIAL ELECTRIC CABLE WITH MESSENGER WIRE |
| | ⊥ | 5/8" x 10' GROUND ROD |
| | ESD ⊥ | ELECTRIC SERVICE DISCONNECT, LIGHTING AND TRAFFIC SIGNAL |
| | ⊕ | COMED POWER POLE |
| | ⊞ | TELEPHONE SPLICE BOX |

TEMPORARY TRAFFIC SIGNAL LEGEND

- | | | |
|-----------------|--|---|
| PROPOSED | | |
| ← | | TEMPORARY TRAFFIC SIGNAL HEAD |
| TSC ⊞ | | TEMPORARY TRAFFIC SIGNAL CONTROLLER CABINET |
| —TS— | | TEMPORARY TRAFFIC SIGNAL SPAN WIRE, TETHER WIRE, AND CABLE |
| ⊞ | | VIDEO DETECTOR SENSOR |
| TS-1 ⊗ | | WOOD POLE (CLASS 5 OR BETTER, 45 FOOT MINIMUM) FOR TEMPORARY TRAFFIC SIGNAL UNLESS OTHERWISE NOTED (TO BE INSTALLED 30' FROM ⊕) |
| ↔ | | DIRECTION OF TRAFFIC FLOW |
| ⊥ | | EMERGENCY VEHICLE LIGHT DETECTOR |
| ⊥ | | CONFIRMATION BEACON |
| UPS | | UNINTERRUPTIBLE POWER SUPPLY |



FILE NAME = D160E63-sht-tal.dgn
PLOT DATE = 1/26/2009

CHRISTIAN-ROGE & ASSOCIATES, INC.
ENGINEERS-PLANNERS-SURVEYORS
211 WEST WACKER DRIVE
CHICAGO, ILLINOIS 60606
PHONE: (312)372-2023 FAX: (312)372-5274

DESIGNED - M.A.	REVISED -
DRAWN - M.A.	REVISED -
CHECKED - E.J.M.	REVISED -
DATE - JANUARY 28, 2009	REVISED -

**STATE OF ILLINOIS
DEPARTMENT OF TRANSPORTATION**

**TEMPORARY TRAFFIC SIGNAL PLAN
U.S. 30 OVER WEST BRANCH BIG ROCK CREEK**

SCALE: 1" = 50' SHEET NO. 1 OF 4 SHEETS STA. 129+95 TO STA. 132+90

F.A.P. RTE. 573	SECTION 117 R-2B-R	COUNTY KANE	TOTAL SHEETS 40	SHEET NO. 10
CONTRACT NO. 60E63				
FED. ROAD DIST. NO. 1 ILLINOIS FED. AID PROJECT				