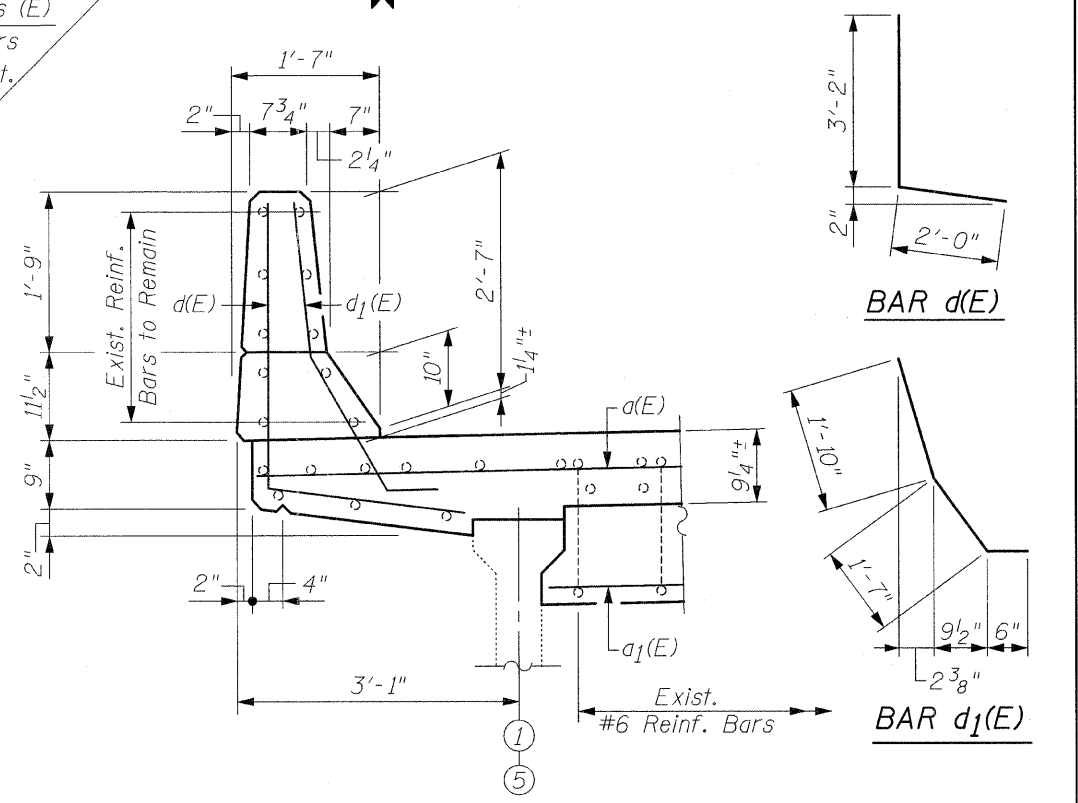


BILL OF MATERIAL

Bar	No.	Size	Length	Shape
d(E)	16	#7	29'-9"	—
a1(E)	10	#6	24'-3"	—
a2(E)	6	#6	27'-9"	—
d(E)	16	#4	5'-2"	L
d1(E)	16	#6	3'-11"	L
Reinforcement Bars, Epoxy Coated	Pound		1,740	
Concrete Removal	Cu. Yd.		13.8	
Concrete Superstructure	Cu. Yd.		14.8	
Bar Splicers	Each		16	
Protective Coat	Sq. Yd.		5	

Quantity for Top & Inside Face of Reconstructed Parapets



LEGEND:
O.F. = Outside Face
I.F. = Inside Face

Cut a1(E) Bars to miss Beams

PLAN AT EAST ABUTMENT
(Proposed)

FILE NAME = jt_reconst.east.dgn	USER NAME = IDOT	DESIGNED - B.N.S.	REVISED -
		DRAWN - F.M.	REVISED -
		CHECKED - B.N.S./J.C.N.	REVISED -
		DATE - MARCH 16, 2009	REVISED -

STATE OF ILLINOIS
DEPARTMENT OF TRANSPORTATION

JOINT RECONSTRUCTION AT EAST ABUTMENT
U.S. 30 OVER WEST BRANCH BIG ROCK CREEK S.N. 045-2005

SCALE: SHEET NO. S6 OF S18 SHEETS STA. TO STA.

F.A.P. RTE. 573	SECTION 117 R-2B-R	COUNTY KANE	TOTAL SHEETS 40	SHEET NO. 23
FED. ROAD DIST. NO. 1 ILLINOIS FED. AID PROJECT			CONTRACT NO. 60E63	

CR & A
CHRISTIAN-ROGE & ASSOCIATES, INC.
ENGINEERS / PLANNERS / SURVEYORS
211 W. WACKER DRIVE CHICAGO, IL 60606
PHONE: (312)372-2023 FAX: (312)372-5274