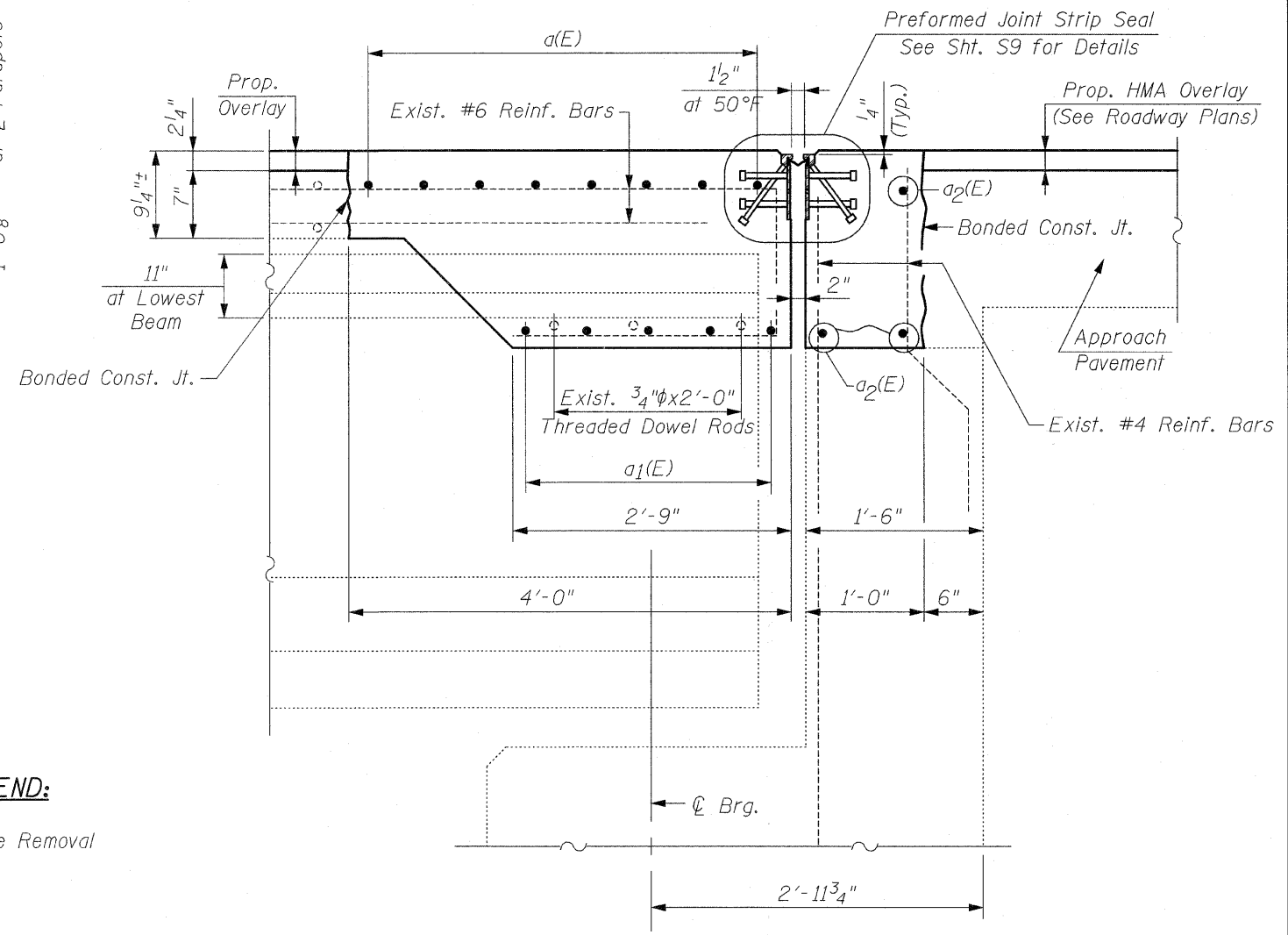


**EXISTING**  
**SECTION D-D**  
**EAST ABUTMENT**  
 (at Rt. L's)



**PROPOSED**  
**SECTION D-D**  
**EAST ABUTMENT**  
 (at Rt. L's)

**LEGEND:**  
 Concrete Removal

**NOTE:**  
 For Bar Splicer Assembly Details, See Sht. S8

**NOTE:**  
 Dimensions are Based on a Rolled Rail Strip Seal Joint. If the Contractor elects to use the Welded Rail Strip Seal Joint, Deck Dimensions may Require Adjustments to Match the Details on Sht. S9

**CR & A**  
 CHRISTIAN-ROGE & ASSOCIATES, INC.  
 ENGINEERS / PLANNERS / SURVEYORS  
 211 W. WACKER DRIVE CHICAGO, IL. 60606  
 PHONE: (312)372-2023 FAX: (312)372-5274

FILE NAME = jt_reconst_east_details.dgn	USER NAME = IDDT	DESIGNED - B.N.S.	REVISED -	<b>STATE OF ILLINOIS</b> <b>DEPARTMENT OF TRANSPORTATION</b>	<b>JOINT RECONSTRUCTION DETAILS AT EAST ABUTMENT</b> <b>U.S. 30 OVER WEST BRANCH BIG ROCK CREEK S.N. 045-2005</b>	F.A.P. RTE. 573	SECTION 117 R-2B-R	COUNTY KANE	TOTAL SHEETS 40	SHEET NO. 24		
PLOT SCALE = 50,000' / IN.	CHECKED - B.N.S./J.C.N.	REVISIED -	SCALE:			SHEET NO. 57 OF 518 SHEETS	STA.	TO STA.	CONTRACT NO. 60E63			
PLOT DATE = 1/26/2009	DATE - JANUARY 27, 2009	REVISIED -	FED. ROAD DIST. NO. 1 ILLINOIS FED. AID PROJECT									