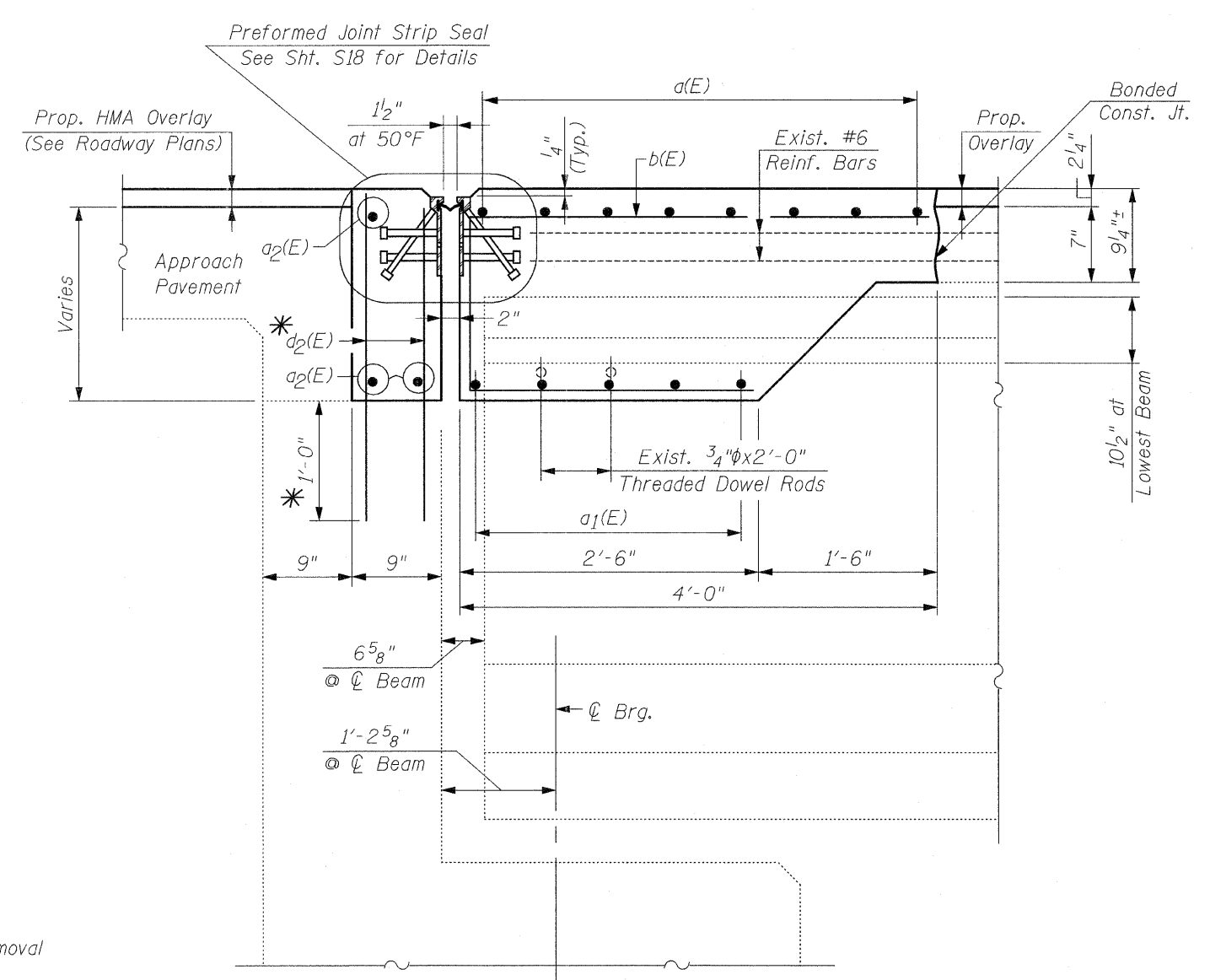


EXISTING
SECTION B-B
WEST ABUTMENT
 (at Rt. L's)



PROPOSED
SECTION B-B
WEST ABUTMENT
 (at Rt. L's)

LEGEND:
 Concrete Removal

* Epoxy Grout Reinforcement Bars According to Section 584 of the Standard Specifications

NOTE:
 For Bar Splicer Assembly Details, See Sht. S17

NOTE:
 Dimensions are Based on a Rolled Rail Strip Seal Joint. If the Contractor elects to use the Welded Rail Strip Seal Joint, Deck Dimensions may Require Adjustments to Match the Details on Sht. S18

CR & A CHRISTIAN-ROGE & ASSOCIATES, INC.
 ENGINEERS / PLANNERS / SURVEYORS
 211 W. WACKER DRIVE CHICAGO, IL. 60606
 PHONE: (312)372-2023 FAX: (312)372-5274

FILE NAME = jt_reconst_west_details.dgn	USER NAME = IDOT	DESIGNED - B.N.S.	REVISED -	STATE OF ILLINOIS DEPARTMENT OF TRANSPORTATION	JOINT RECONSTRUCTION DETAILS AT WEST ABUTMENT U.S. 30 OVER EAST BRANCH BIG ROCK CREEK S.N. 045-2006	F.A.P. RTE. 573	SECTION 117 R-2B-R	COUNTY KANE	TOTAL SHEETS 40	SHEET NO. 31		
PLOT SCALE = 50.0000' / IN.	CHECKED - B.N.S./J.C.N.	REVISED -	SCALE:			SHEET NO. S14 OF S18 SHEETS	STA.	TO STA.	CONTRACT NO. 60E63			
PLOT DATE = 1/26/2009	DATE - JANUARY 27, 2009	REVISED -	FED. ROAD DIST. NO. 1 ILLINOIS FED. AID PROJECT									