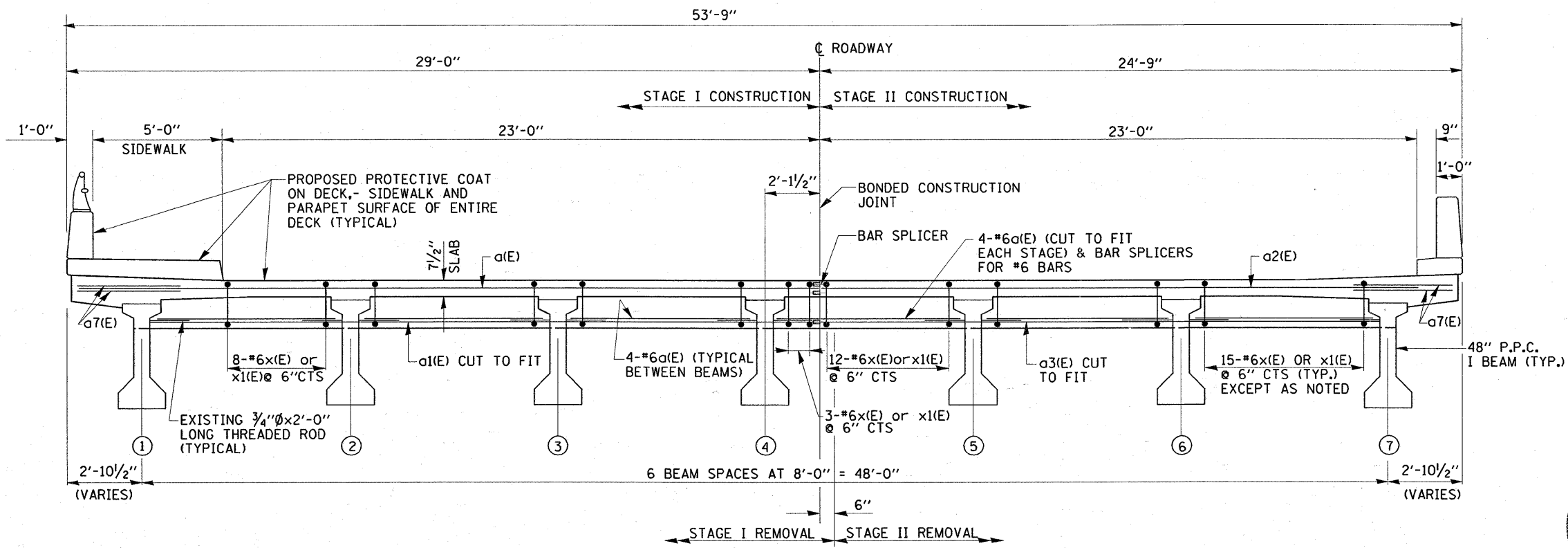
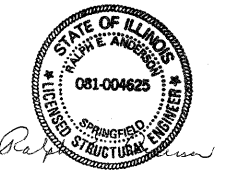


PLAN



CROSS SECTION
(LOOKING EAST)



Expires 11/30/2010

FILE NAME = es:\pw_work\PHIDOT\TINIAKOSMV\00101671\09-0264.dgn	USER NAME = tntiakosmv	DESIGNED - DRAWN -	REVISED - REVISED -	STATE OF ILLINOIS DEPARTMENT OF TRANSPORTATION	U.S. 30 OVER E.J. & E.R.R. PLAN AND SECTION S.N. 099-0264		F.A.P. RTE. 607	SECTION 13 D-R-1-I	COUNTY WILL	TOTAL SHEETS 16	SHEET NO. 7	
PLOT SCALE = 50.0000' / IN.	CHECKED -	REVISED -	REVISED -		SCALE:	SHEET NO. 2 OF 9 SHEETS	STA. TO STA.	CONTRACT NO. 60E89				
PLOT DATE = 2/19/2009	DATE -	REVISED -	REVISED -		FED. ROAD DIST. NO. ILLINOIS FED. AID PROJECT							