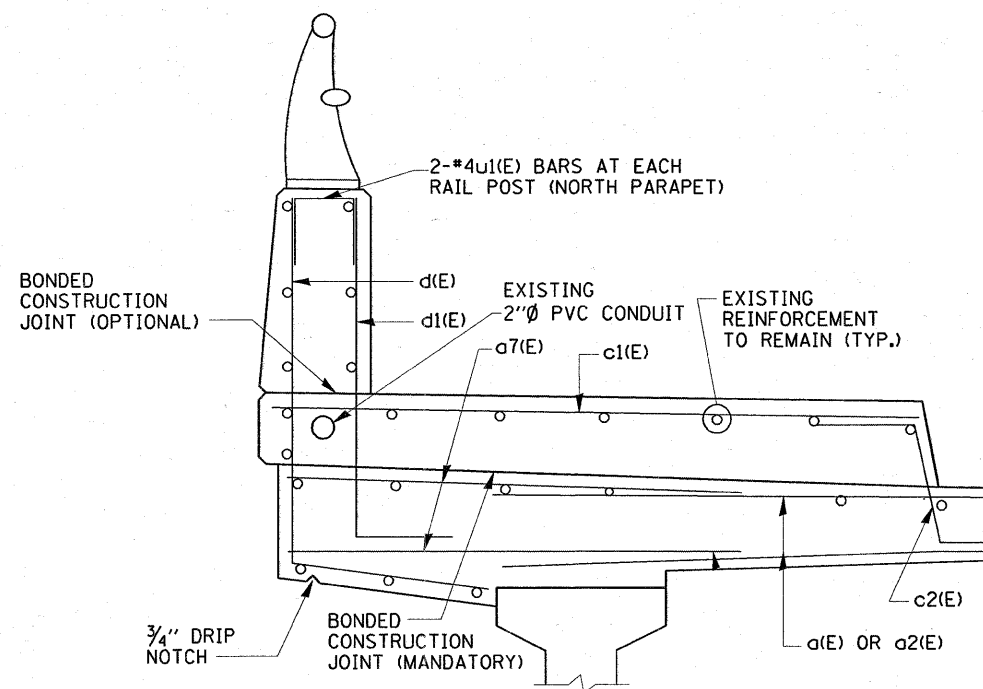
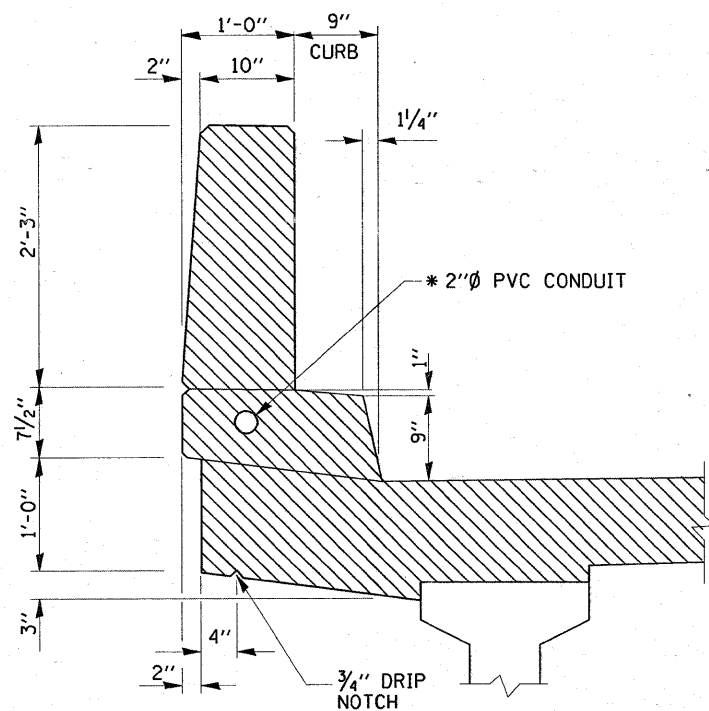


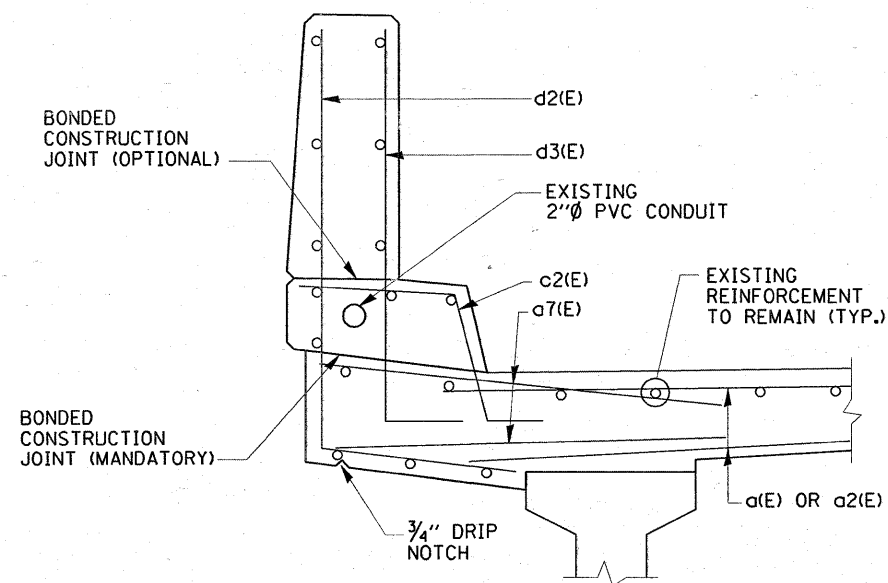
SECTION A-A (EXISTING)
 (HATCHED AREA INDICATES CONCRETE REMOVAL)



SECTION A-A (PROPOSED)
 PROPOSED DIMENSIONS SAME AS EXISTING



SECTION B-B (EXISTING)
 (HATCHED AREA INDICATES CONCRETE REMOVAL)



SECTION B-B (PROPOSED)
 PROPOSED DIMENSIONS SAME AS EXISTING

FILE NAME =	USER NAME = tunkosmv	DESIGNED -	REVISED -	STATE OF ILLINOIS DEPARTMENT OF TRANSPORTATION	U.S. 30 OVER E.J. & E.R.R. SECTIONS AT WEST AND EAST ABUTMENTS S.N. 099-0264		F.A.P. RTE. 607	SECTION 13 D-R-1-I	COUNTY WILL	TOTAL SHEETS 16	SHEET NO. 9	
ca\pw_work\PWIDOT\TINAKOSMV\d0101671\099-0264.dgn		DRAWN -	REVISED -		SCALE:	SHEET NO. 4 OF 9 SHEETS	STA. TO STA.	FED. ROAD DIST. NO.	ILLINOIS FED. AID PROJECT	CONTRACT NO. 60E89		
		CHECKED -	REVISED -									
		DATE -	REVISED -									