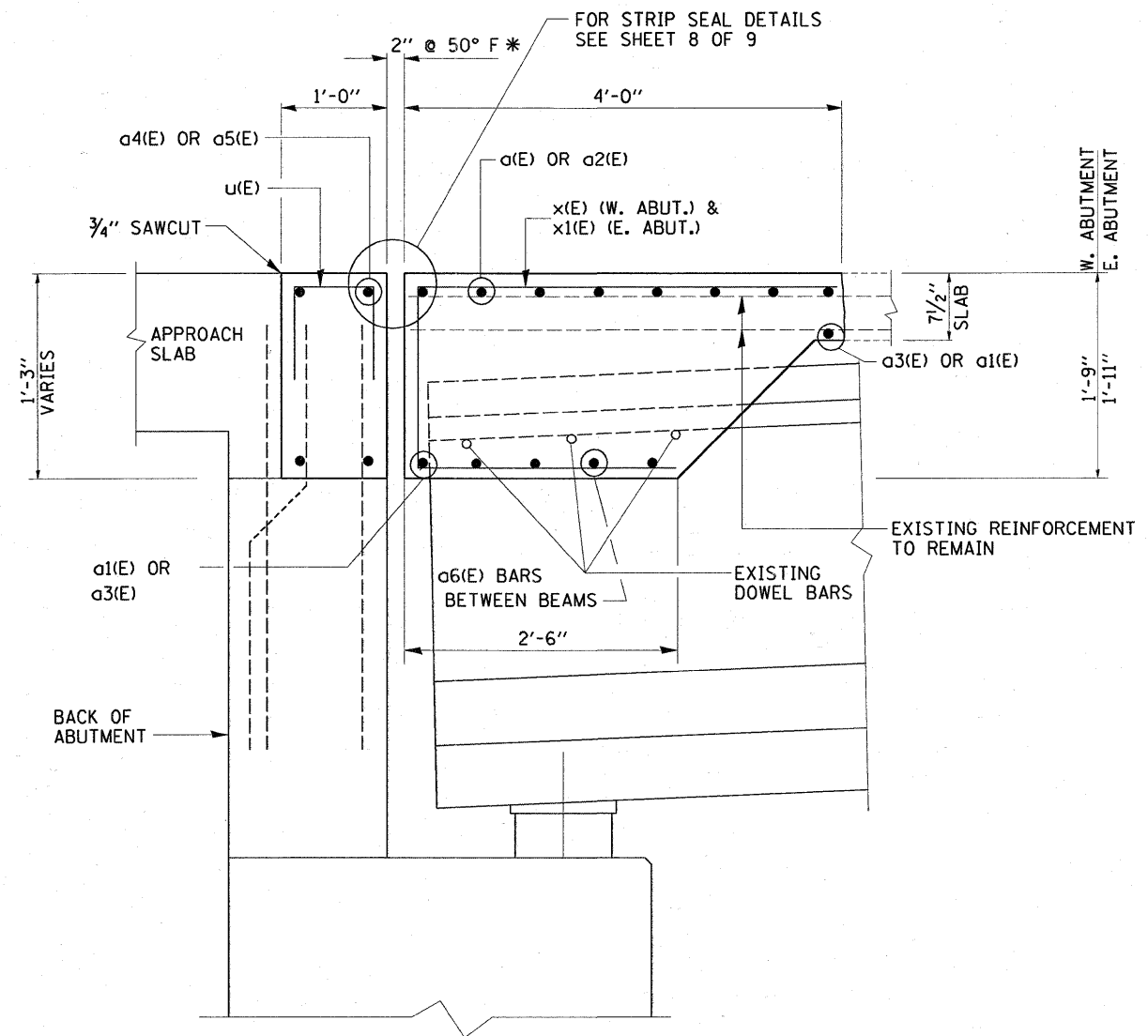


SECTION C-C (EXISTING)
(HATCHED AREA INDICATES CONCRETE REMOVAL)

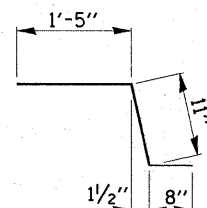


SECTION C-C (PROPOSED)

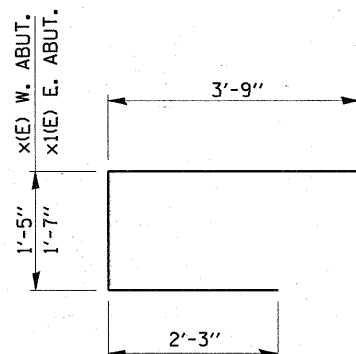
NOTES:

FOR BONDED CONSTRUCTION JOINT SEE SPECIAL PROVISION REINFORCEMENT BARS DESIGNATED (E) SHALL BE EPOXY COATED. EXISTING REINFORCEMENT BARS AND DOWEL RODS SHOWN ARE TO BE CLEANED AND INCORPORATED INTO NEW CONSTRUCTION.

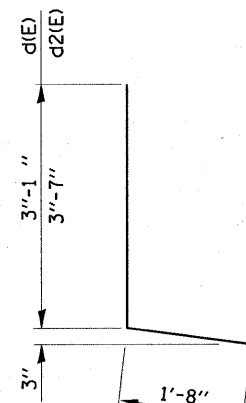
* DIMENSIONS ARE BASED ON A ROLLED RAIL STRIP SEAL JOINT. IF THE CONTRACTOR ELECTS TO USE THE WELDED RAIL STRIP SEAL JOINT, DECK DIMENSIONS MAY REQUIRE ADJUSTMENTS TO SATISFY THE DETAILS ON BASE SHEET EJ-SSJ.



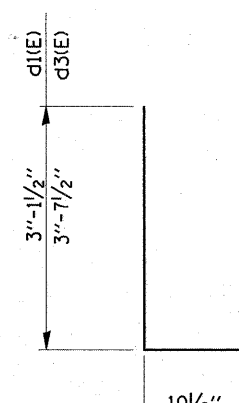
BAR c2(E)



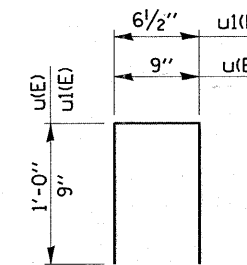
BAR x(E) & x1(E)



BAR d(E) & d2(E)



BAR d1(E) & d3(E)



BAR u(E) & u1(E)

FILE NAME =
c:\pwwork\pww\d04\TINIAKOSMV\d0181671\099-0264.dgn

USER NAME = tiniakosmv
DESIGNED -
DRAWN -
CHECKED -
DATE -

REVISI
REVISI
REVISI
REVISI

DESIGNED -
DRAWN -
CHECKED -
DATE -

**STATE OF ILLINOIS
DEPARTMENT OF TRANSPORTATION**

**U.S. 30 OVER E.J. & E. R.R.
EXPANSION JOINS AT WEST AND EAST ABUTMENTS
S.N. 099-0264**

F.A.P. RTE. 607	SECTION 13 D-R-1-I	COUNTY WILL	TOTAL SHEETS 16	SHEET NO. 10
FED. ROAD DIST. NO. ILLINOIS FED. AID PROJECT			CONTRACT NO. 60E89	