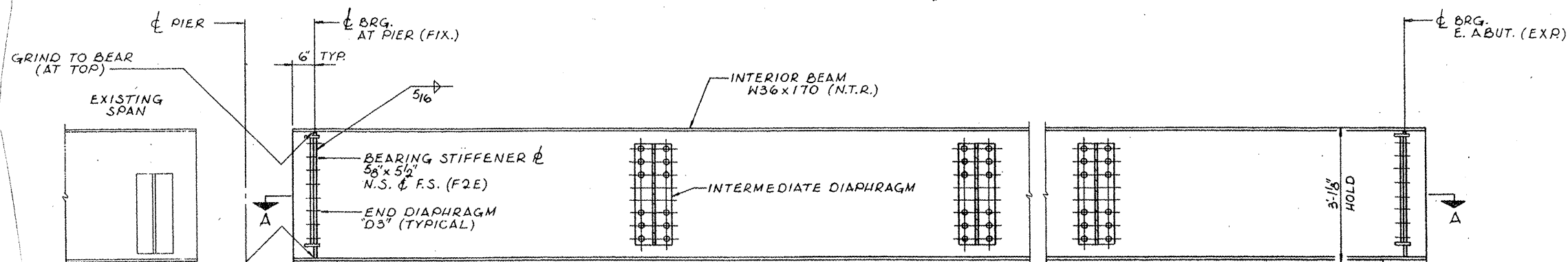


ROUTE	SECTION	COUNTY	TOTAL SHEETS	SHEET NUMBER
VARIOUS	2008-053 BP	VARIOUS	54	37

CONTRACT NO. 60F04



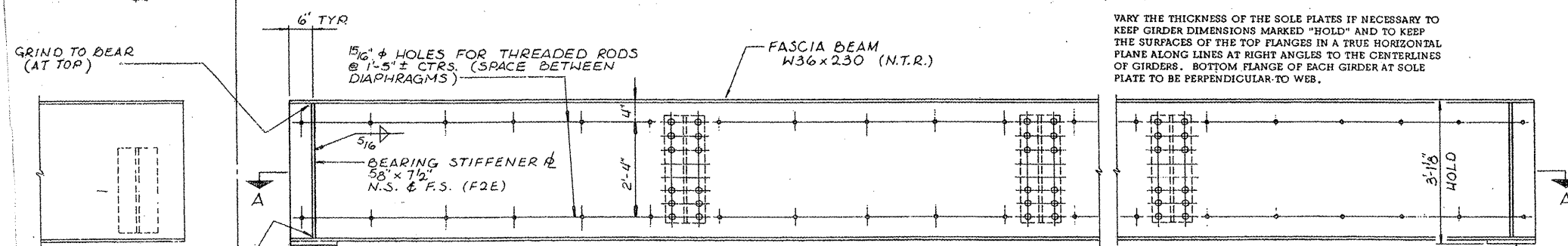
ELEVATION OF INTERIOR BEAM

NOTE: (N.T.R.) INDICATES NOTCH TOUGHNESS REQUIREMENT

*SOLE ϕ 1" x 12" (TYR)

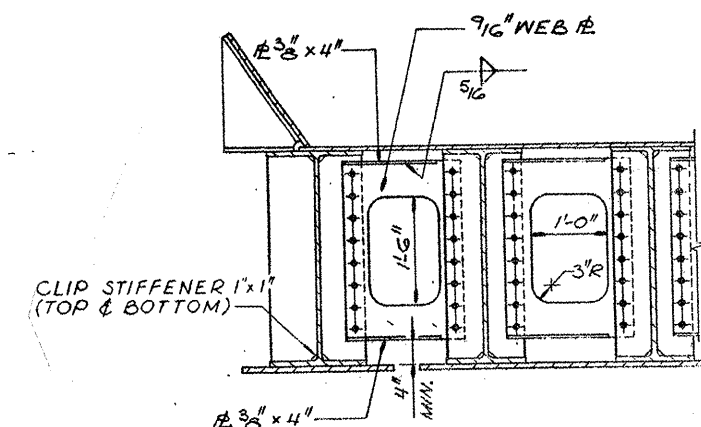
*NOTE:

VARY THE THICKNESS OF THE SOLE PLATES IF NECESSARY TO KEEP GIRDER DIMENSIONS MARKED "HOLD" AND TO KEEP THE SURFACES OF THE TOP PLANGES IN A TRUE HORIZONTAL PLANE ALONG LINES AT RIGHT ANGLES TO THE CENTERLINES OF GIRDERS. BOTTOM FLANGE OF EACH GIRDER AT SOLE PLATE TO BE PERPENDICULAR TO WEB.



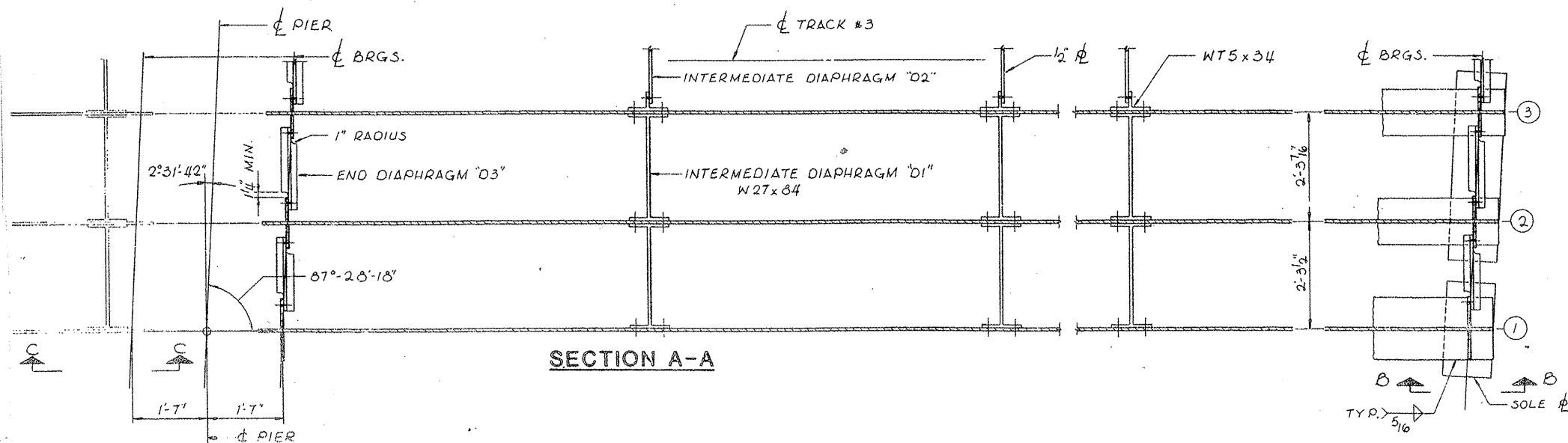
ELEVATION OF FASCIA BEAM

*SOLE ϕ 1 1/4" x 12" (TYR)



END DIAPHRAGM "D3"

SCALE: 3/4" = 1'-0"



SECTION A-A

LOCATION NO. 7

EXIST. BRIDGE PLANS

BNSF RR OVER IL 59

SN 022-0038