

F.A.U. RTE.	SECTION	COUNTY	TOTAL SHEETS	SHEET NO.
1350	2008-063 RS	COOK	42	1
FED. ROAD DIST. NO. 1		ILLINOIS	CONTRACT NO. 60F40	

STATE OF ILLINOIS
DEPARTMENT OF TRANSPORTATION
DIVISION OF HIGHWAYS

**PROPOSED
HIGHWAY PLANS**

FAU 1350 / ILL 72 (TOUHY AVENUE / HIGGINS ROAD)
SECTION: 2008-063 RS
WOLF ROAD TO US 12 / 45 (MANNHEIM ROAD)
& AT WILLOW CREEK
RESURFACING (3P); BRIDGE REPAIR

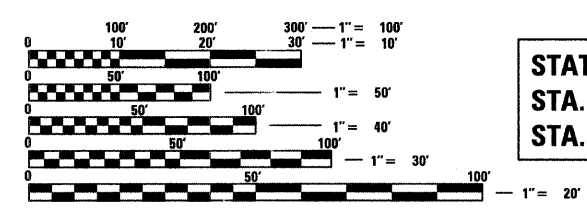
FOR INDEX OF SHEETS, SEE SHEET NO. 2

DESIGN DESIGNATION: OTHER PRINCIPAL ARTERIAL
SPEED LIMIT: 35 M.P.H. TO 45 M.P.H.
2007 ADT = 39,300

PROJECT IS LOCATED IN THE
CITY OF DES PLAINES AND THE
VILLAGE OF ROSEMONT

COOK COUNTY
C-91-071-09

MAINE TOWNSHIP
R. 11 E.

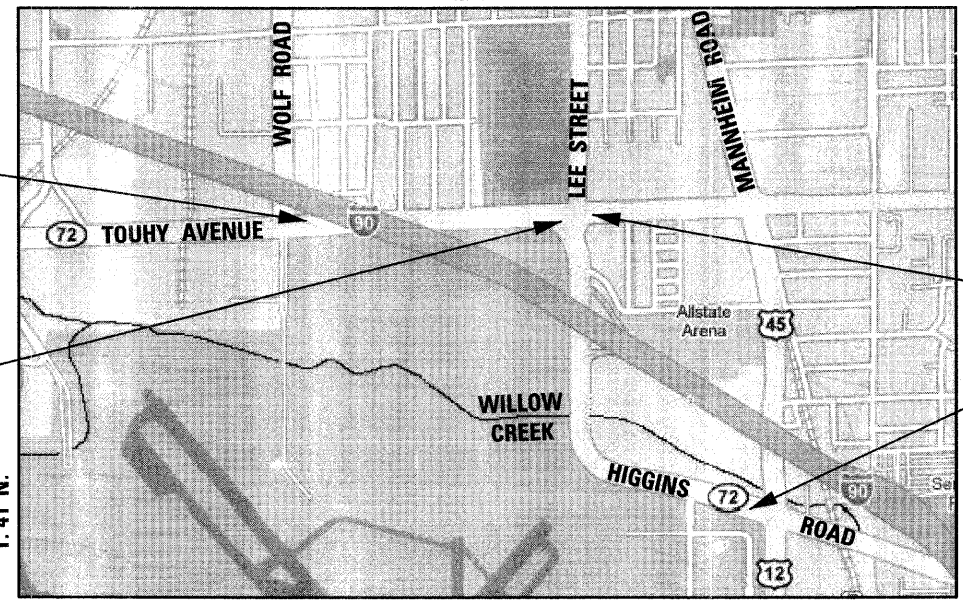


FULL SIZE PLANS HAVE BEEN PREPARED USING STANDARD ENGINEERING SCALES. REDUCED SIZED PLANS WILL NOT CONFORM TO STANDARD SCALES. IN MAKING MEASUREMENTS ON REDUCED PLANS, THE ABOVE SCALES MAY BE USED.

J.U.L.I.E.
JOINT UTILITY LOCATING INFORMATION FOR EXCAVATORS
1-800-892-0123
OR 811

DISTRICT ONE - PLAN PREP ENGINEER:
KEN ENG (847) 705-4247

CONTRACT NO. 60F40



PROJECT BEGINS
STA. 101 + 21

STATION EQUATION
STA. 132 + 35.3 TOUHY AVE.
STA. 9 + 24.5 HIGGINS RD.

PROJECT ENDS
STA. 136 + 50

PROJECT ENDS
STA. 67 + 66

GROSS LENGTH OF PROJECT = 9,620 FEET = 1.822 MILES
NET LENGTH OF PROJECT = 9,620 FEET = 1.822 MILES

STATE OF ILLINOIS
DEPARTMENT OF TRANSPORTATION
DIVISION OF HIGHWAYS

SUBMITTED MARCH 5, 2009

Devin M. O'Keefe / DEPUTY DIRECTOR OF HIGHWAYS, REGION ONE ENGINEER

March 27, 2009
Charles J. Ingersoll / ENGINEER OF DESIGN AND ENVIRONMENT

March 27, 2009
Christine M. Reed / DIRECTOR OF HIGHWAYS, CHIEF ENGINEER



Birinder S. Sachdeva / March 5, 2009
BIRINDER S. SACHDEVA, P.E. / DATE
EXPIRES: 11-30-2009



Bhadresh N. Shah / MARCH 05, 2009
BHADRESH N. SHAH, S.E., P.E. / DATE
EXPIRES: 11-30-2010

CHRISTIAN-ROGE & ASSOCIATES, INC.
ENGINEERS - PLANNERS - SURVEYORS
211 W. WACKER DRIVE CHICAGO, IL 60606
TELEPHONE: 312-372-2023

PRINTED BY THE AUTHORITY
OF THE STATE OF ILLINOIS