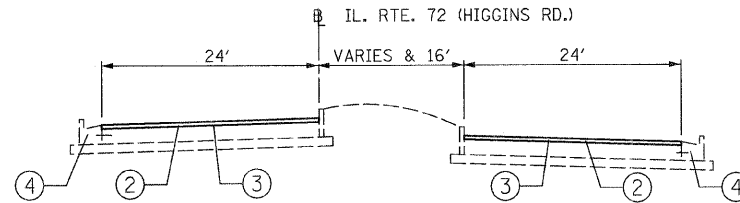
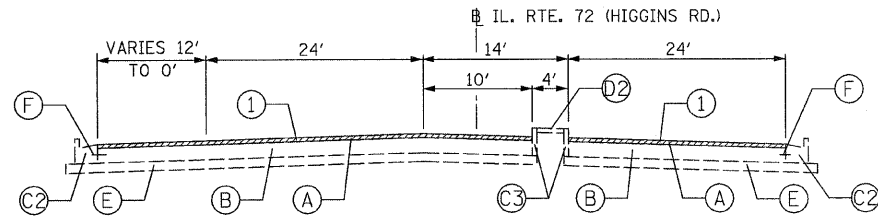


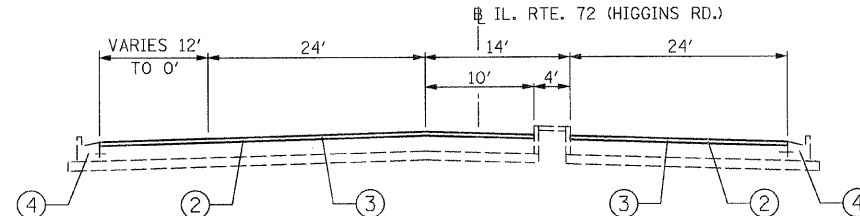
EXISTING TYPICAL SECTION
STA. 9+24.50 TO STA. 12+80



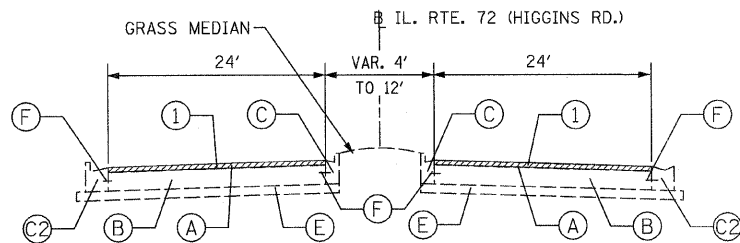
PROPOSED TYPICAL SECTION
STA. 9+24.5 TO STA. 12+80



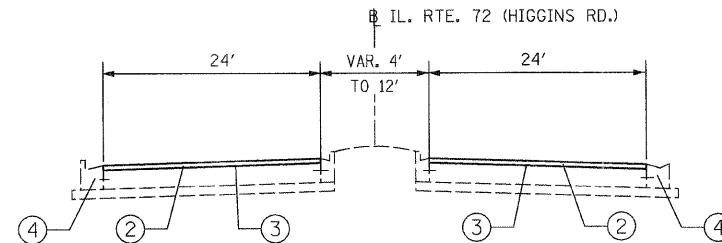
EXISTING TYPICAL SECTION
STA. 12+80 TO STA. 17+58



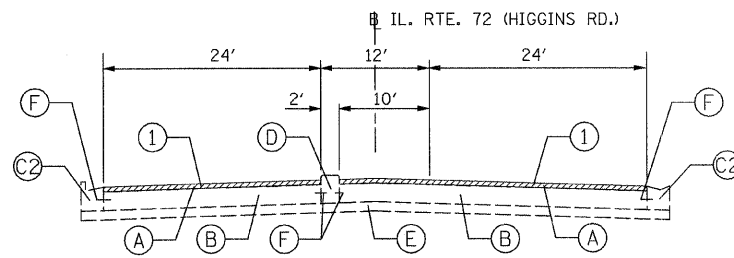
PROPOSED TYPICAL SECTION
STA. 12+80 TO STA. 17+58



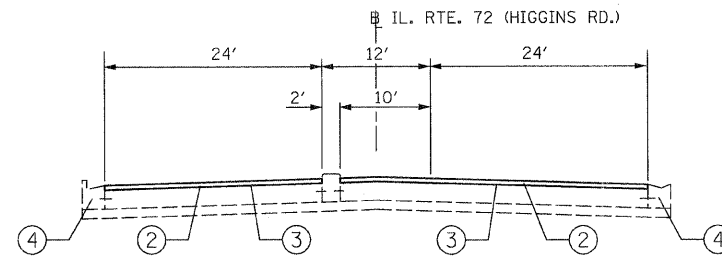
EXISTING TYPICAL SECTION
STA. 17+58 TO STA. 22+30
STA. 23+30 TO STA. 25+45 - BRIDGE OMISSION
STA. 28+50 TO STA. 31+87



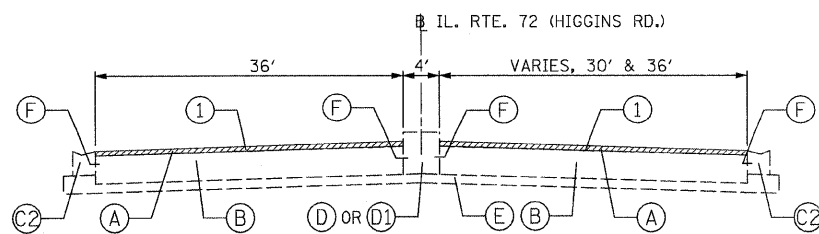
PROPOSED TYPICAL SECTION
STA. 17+58 TO STA. 22+30
STA. 23+30 TO STA. 25+45 - BRIDGE OMISSION
STA. 28+50 TO STA. 31+87



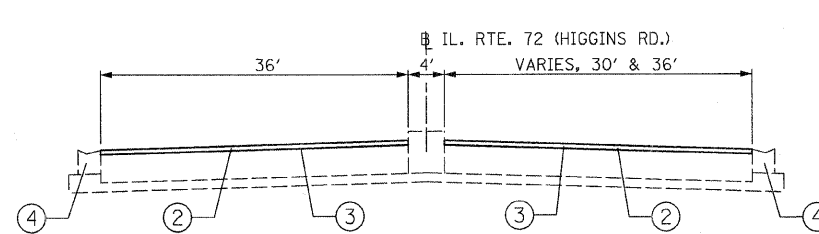
EXISTING TYPICAL SECTION
STA. 25+45 TO STA. 28+50



PROPOSED TYPICAL SECTION
STA. 25+45 TO STA. 28+50



EXISTING TYPICAL SECTION
STA. 31+87 TO STA. 36+64.40



PROPOSED TYPICAL SECTION
STA. 31+87 TO STA. 36+64.40

EXISTING CONDITIONS:

- (A) HOT-MIX ASPHALT SURFACE AND BINDER COURSE, 3" & VARIES
- (B) P.C.C. BASE COURSE, 9" OR P.C.C. PAVEMENT, 10"
- (C) COMBINATION CONCRETE CURB AND GUTTER, TYPE B-6.12
- (C1) COMBINATION CONCRETE CURB AND GUTTER, TYPE B-6.18
- (C2) COMBINATION CONCRETE CURB AND GUTTER, TYPE B-6.24
- (C3) CONCRETE CURB, TYPE B-6
- (C4) CONCRETE CURB, TYPE B-6 (DOWELLED)
- (D) CONCRETE MEDIAN, BARRIER OR MOUNTABLE
- (D1) CONCRETE MEDIAN, CORRUGATED OR BARRIER (DOWELLED)
- (D2) CONCRETE MEDIAN SURFACE, 4" & VARIES
- (E) SUB-BASE GRANULAR, TYPE B, 4" OR 6"
- (F) TIE-BARS

PROPOSED IMPROVEMENTS:

- (1) HOT-MIX ASPHALT SURFACE REMOVAL, 2 1/2 "
- (2) POLYMERIZED HOT-MIX ASPHALT SURFACE COURSE, MIX "F", N90, 1 3/4 "
- (3) POLYMERIZED LEVELING BINDER (MACHINE METHOD), IL-4.75, N50, 3/4 "
- (4) COMB. CONC. CURB AND GUTTER REMOVAL AND REPLACEMENT
(AS DETERMINED BY THE ENGINEER)

FILE NAME = D168F40-sh1-typical.dgn
PLOT DATE = 3/6/2009

CHRISTIAN-ROGE & ASSOCIATES, INC.
ENGINEERS-PLANNERS-SURVEYORS
211 WEST WACKER DRIVE
CHICAGO, ILLINOIS 60606
PHONE: (312)372-2023 FAX: (312)372-5274

DESIGNED - G.F.L.
DRAWN - B.K.
CHECKED - M.P.
DATE - MARCH 13, 2009

REVISED -
REVISED -
REVISED -
REVISED -

STATE OF ILLINOIS
DEPARTMENT OF TRANSPORTATION

TYPICAL SECTIONS
IL 72 (TOUHY AVE./HIGGINS RD.)

SCALE: NONE SHEET NO. 2 OF 3 SHEETS STA. VARIOUS TO STA. VARIOUS

F.A.U. RTE. 1350	SECTION 2008-063 RS	COUNTY COOK	TOTAL SHEETS 42	SHEET NO. 5
FED. ROAD DIST. NO. 1 ILLINOIS FED. AID PROJECT				CONTRACT NO. 60F40