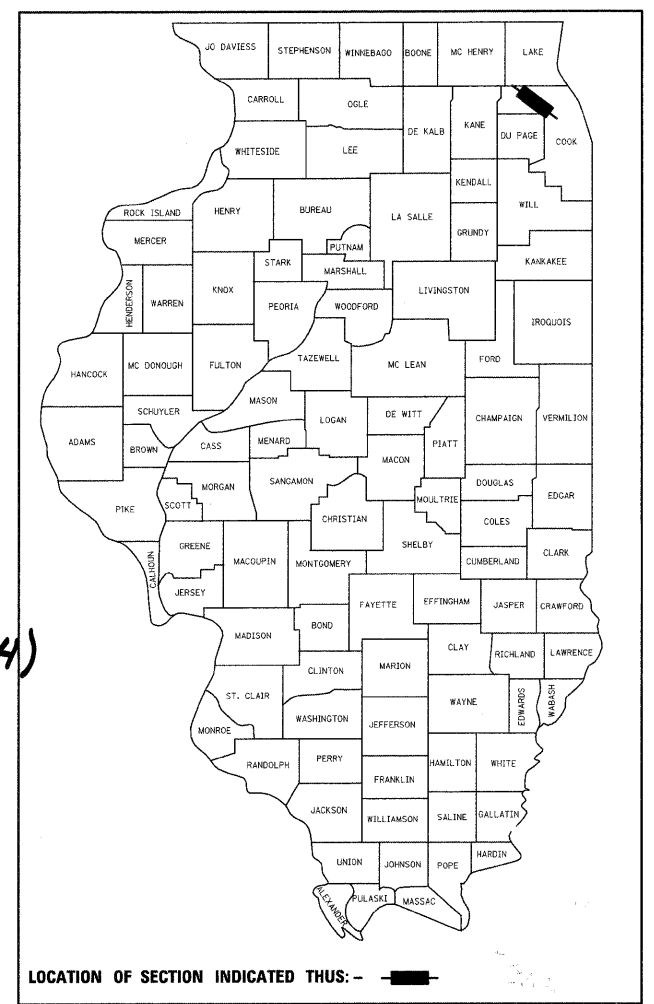


F.A.P. RTE.	SECTION	COUNTY	TOTAL SHEETS	SHEET NO.
334	2008-08-31	COOK	80	1
FED. ROAD DIST. NO.	ILLINOIS	CONTRACT NO.	60F87	

★ 80+1=81

D-91-277-09



LOCATION OF SECTION INDICATED THIS: - [shaded area] -

STATE OF ILLINOIS

DEPARTMENT OF TRANSPORTATION

DIVISION OF HIGHWAYS

PLANS FOR PROPOSED
FEDERAL AID HIGHWAY

DISTRICT 1
HIGHWAY SAFETY IMPROVEMENT PROJECT
LIGHTING AND TRAFFIC SIGNAL MODERNIZATION

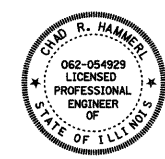
U.S. ROUTE 12 (RAND ROAD)
FROM OLD HICKS ROAD TO WEST
FRONTAGE ROAD /IL ROUTE 53 WEST RAMP
F.A.P. ROUTE 334

PROJECT: HSIP-000S(664)

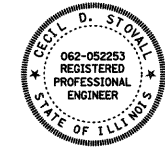
IL ROUTE 53 /68 (DUNDEE ROAD)
FROM LYNDA DRIVE TO IL ROUTE 53 WEST RAMP
F.A.P. ROUTE 343

SECTION 2008-08-31
JOB D-91-277-09
COUNTY COOK

C-91-277-09



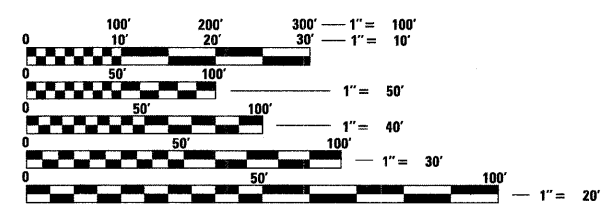
SIGNED [Signature]
DATE Jan 27, 2009
EXPIRES Nov 30, 2009
FOR DRAWINGS 1 TO 44



SIGNED [Signature]
DATE 1/27/2009
EXPIRES Nov 30, 2009
FOR DRAWINGS 45 TO 80

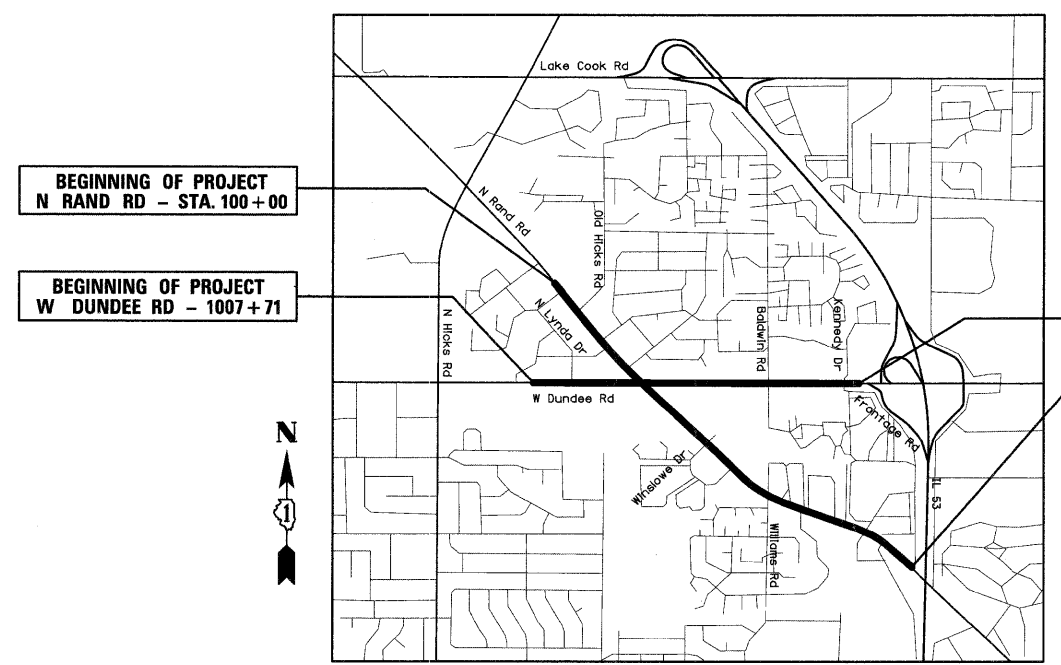
FOR INDEX OF SHEETS, SEE SHEET NO. 2

PROJECT LOCATED IN THE VILLAGE OF PALATINE



FULL SIZE PLANS HAVE BEEN PREPARED USING STANDARD ENGINEERING SCALES. REDUCED SIZED PLANS WILL NOT CONFORM TO STANDARD SCALES. IN MAKING MEASUREMENTS ON REDUCED PLANS, THE ABOVE SCALES MAY BE USED.

J.U.L.I.E.
JOINT UTILITY LOCATION INFORMATION FOR EXCAVATION
1-800-892-0123
OR 811



LOCATION MAP (N.T.S.)

STATE OF ILLINOIS
DEPARTMENT OF TRANSPORTATION
DIVISION OF HIGHWAYS

SUBMITTED Jan 30, 2009

[Signature]
DEPUTY DIRECTOR OF HIGHWAYS, REGION ENGINEER

March 27, 2009
[Signature]
ENGINEER OF DESIGN AND ENVIRONMENT

March 27, 2009
[Signature]
DIRECTOR OF HIGHWAYS, CHIEF ENGINEER

PRINTED BY THE AUTHORITY
OF THE STATE OF ILLINOIS

PROJECT ENGINEER - SIGNALS: CHAD HAMMERL
PROJECT ENGINEER - LIGHTING: CECIL STOVAL
PROJECT MANAGER - KENNETH GLASSMAN
CONTRACT NO. 60F87

DISTRICT 1 - BUREAU OF TRAFFIC: STEVE TRAVIA / DARYLE DREW (847) 705-4420