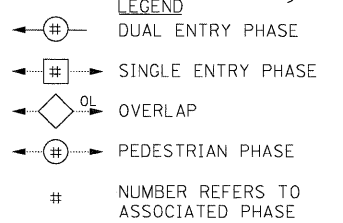
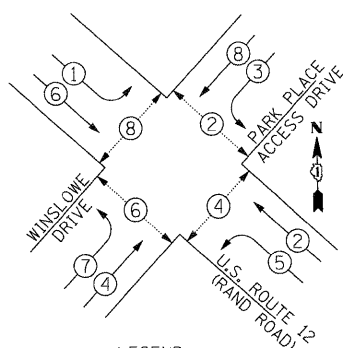
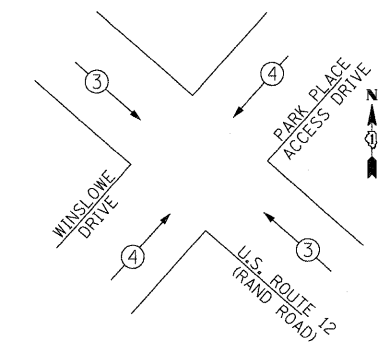


1/27/2009 P:\2009\13\13_CablePlan_Rand&Winslowe.dgn

CONTROLLER SEQUENCE



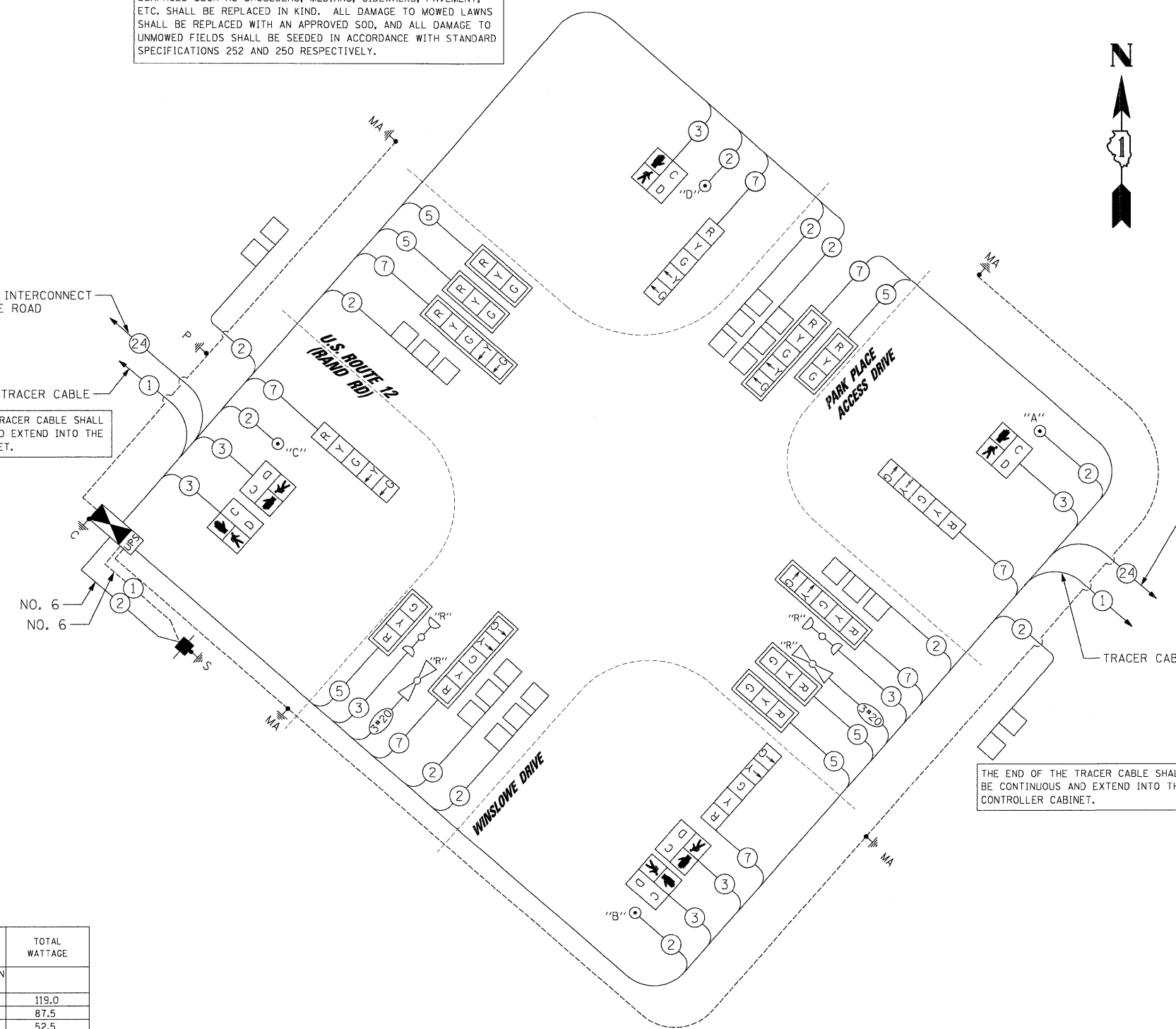
PHASE DESIGNATION DIAGRAM
EMERGENCY VEHICLE PREEMPTION SEQUENCE



PROPOSED EMERGENCY VEHICLE PREEMPTORS		
EMERGENCY VEHICLE PREEMPTOR	3	4
MOVEMENT		

RESTORATION OF WORK AREA, RESTORATION OF THE TRAFFIC SIGNAL WORK AREA SHALL BE INCIDENTAL TO THE RELATED PAY ITEM SUCH AS FOUNDATION, CONDUIT, HANDHOLE, TRENCH AND BACKFILL, ETC., AND NO EXTRA COMPENSATION SHALL BE ALLOWED. ALL ROADWAY SURFACES SUCH AS SHOULDERS, MEDIANS, SIDEWALKS, PAVEMENT, ETC. SHALL BE REPLACED IN KIND. ALL DAMAGE TO MOWED LAWNS SHALL BE REPLACED WITH AN APPROVED SOD, AND ALL DAMAGE TO UNMOWED FIELDS SHALL BE SEEDING IN ACCORDANCE WITH STANDARD SPECIFICATIONS 252 AND 250 RESPECTIVELY.

NOTE:
THE TRAFFIC SIGNAL CONTROLLER EQUIPMENT FOR THIS PROJECT SHALL BE "ECONOLITE" TO MATCH THE EXISTING ADJACENT SYSTEM.



CABLE PLAN LEGEND

EXISTING	PROPOSED	DESCRIPTION
		8" TRAFFIC SIGNAL SECTION
		12" TRAFFIC SIGNAL SECTION
		12" PEDESTRIAN SIGNAL SECTION
		C/D INDICATES COUNTDOWN SIGNAL HEAD
		CONTROLLER CABINET
		SERVICE INSTALLATION
		VEHICLE DETECTOR, INDUCTION LOOP
		EMERGENCY VEHICLE LIGHT DETECTOR
		CONFIRMATION BEACON
		PEDESTRIAN PUSHBUTTON
		# DENOTES NUMBER OF CONDUCTORS. ALL CABLE NO. 14 EXCEPT AS INDICATED. ALL LOOP DETECTOR CABLE TO BE SHIELDED.
		NO. 14 1/2 C TRACER CABLE
		FIBER OPTIC CABLE IN CONDUIT NO. 62.5/125 MM-12F SM-12F
		SIGNAL FACE WITH BACKPLATE
		"P" INDICATES PROGRAMMED HEAD
		ILLUMINATED SIGN, FIBER OPTIC "NO LEFT TURN"
		ILLUMINATED SIGN, FIBER OPTIC "NO RIGHT TURN"
		TELEPHONE CONNECTION
		GROUND ROD AT HANDHOLE (H), DOUBLE HANDHOLE(HH), OR CONTROLLER(C)
		GROUND ROD AT POST (P) OR MAST ARM POLE (MA)
		GROUND ROD AT ELECTRICAL SERVICE
		UNINTERRUPTIBLE POWER SUPPLY
		RELOCATED

SCHEDULE OF QUANTITIES

ITEM	UNIT	TOTAL
TOPSOIL FURNISH AND PLACE, 4"	SO YD	28
SODDING	SO YD	28
PORTLAND CEMENT CONCRETE SIDEWALK 5 INCH	SO FT	1,110
DETECTABLE CURBS	SO FT	93
COMBINATION CURB AND GUTTER REMOVAL	FOOT	89
CONCRETE CURB, TYPE B	SO FT	908
COMBINATION CONCRETE CURB AND GUTTER, TYPE B-6.24	FOOT	264
SIGN PANEL - TYPE 1	SO FT	89
SIGN PANEL - TYPE 2	SO FT	18
THERMOPLASTIC PAVEMENT MARKING - LINE 6"	FOOT	25
THERMOPLASTIC PAVEMENT MARKING - LINE 24"	FOOT	407
THERMOPLASTIC PAVEMENT MARKING REMOVAL	FOOT	113
CONDUIT IN TRENCH, 2" DIA., GALVANIZED STEEL	SO FT	277
CONDUIT IN TRENCH, 3" DIA., GALVANIZED STEEL	FOOT	454
CONDUIT IN TRENCH, 4" DIA., GALVANIZED STEEL	FOOT	34
CONDUIT PUSHED, 2" DIA., GALVANIZED STEEL	FOOT	12
CONDUIT PUSHED, 4" DIA., GALVANIZED STEEL	FOOT	212
HANDHOLE	FOOT	270
HEAVY-DUTY HANDHOLE	EACH	6
DOUBLE HANDHOLE	EACH	3
TRENCH AND BACKFILL FOR ELECTRICAL WORK	FOOT	1
FULL-ACTUATED CONTROLLER AND TYPE IV CABINET, SPECIAL	EACH	500
TRANSCEIVER - FIBER OPTIC	EACH	1
ELECTRIC CABLE IN CONDUIT, SIGNAL NO. 14 2C	FOOT	560
ELECTRIC CABLE IN CONDUIT, SIGNAL NO. 14 3C	FOOT	1,089
ELECTRIC CABLE IN CONDUIT, SIGNAL NO. 14 5C	FOOT	1,047
ELECTRIC CABLE IN CONDUIT, SIGNAL NO. 14 7C	FOOT	1,346
ELECTRIC CABLE IN CONDUIT, LEAD-IN, NO. 14 1 PAIR	FOOT	1,474
ELECTRIC CABLE IN CONDUIT, SERVICE, NO. 6 2 C	FOOT	86
STEEL COMBINATION MAST ARM ASSEMBLY AND POLE 32 FT.	EACH	1
STEEL COMBINATION MAST ARM ASSEMBLY AND POLE 34 FT.	EACH	1
STEEL COMBINATION MAST ARM ASSEMBLY AND POLE 38 FT.	EACH	1
STEEL COMBINATION MAST ARM ASSEMBLY AND POLE 44 FT.	EACH	1
CONCRETE FOUNDATION, TYPE A	FOOT	4
CONCRETE FOUNDATION, TYPE C	FOOT	4
CONCRETE FOUNDATION, TYPE E 36-INCH DIAMETER	FOOT	60
SIGNAL HEAD, LED, 1-FACE, 3-SECTION, MAST ARM MOUNTED	EACH	6
SIGNAL HEAD, LED, 1-FACE, 5-SECTION, BRACKET MOUNTED	EACH	4
SIGNAL HEAD, LED, 1-FACE, 5-SECTION, MAST ARM MOUNTED	EACH	4
PEDESTRIAN SIGNAL HEAD, LED, 1-FACE, BRACKET MOUNTED WITH COUNTDOWN TIMER	EACH	2
PEDESTRIAN SIGNAL HEAD, LED, 2-FACE, BRACKET MOUNTED WITH COUNTDOWN TIMER	EACH	2
TRAFFIC SIGNAL BACKPLATE, LOUVERED, ALUMINUM	EACH	10
INDUCTIVE LOOP DETECTOR	EACH	8
DETECTOR LOOP, TYPE 1	FOOT	682
PEDESTRIAN PUSH-BUTTON	EACH	4
TEMPORARY TRAFFIC SIGNAL INSTALLATION	EACH	1
REMOVE EXISTING TRAFFIC SIGNAL EQUIPMENT	EACH	1
REMOVE EXISTING HANDHOLE	EACH	8
REMOVE EXISTING CONCRETE FOUNDATION	EACH	9
TEMPORARY TRAFFIC SIGNAL TIMING	EACH	1
SERVICE INSTALLATION - POLE MOUNTED	EACH	1
UNINTERRUPTIBLE POWER SUPPLY	EACH	1
ELECTRIC CABLE IN CONDUIT, GROUNDING, NO. 6 1C	FOOT	452
ELECTRIC CABLE IN CONDUIT NO. 20 3/C, TWISTED, SHIELDED	FOOT	296

I.D.O.T. TRAFFIC SIGNAL INSTALLATION ELECTRICAL SERVICE REQUIREMENTS

TYPE	NO. OF LAMPS	WATTAGE INCAND.	LED	% OPERATION	TOTAL WATTAGE
SIGNAL (RED)	14	17		0.50	119.0
(YELLOW)	14	25		0.25	87.5
(GREEN)	14	15		0.25	52.5
ARROW	16	12		0.10	19.2
PED. SIGNAL	6	25		1.0	150.0
CONTROLLER	1	100		1.0	100.0
ILLUM. SIGN	-	25		1.0	-
FLASHER	-	-		-	-
TOTAL					528.2

FOUNDATION (DEPTH)	(FT.)	CABLE SLACK	(FT.)	VERTICAL	(FT.)
TYPE A - POST	4	HANDHOLE	6.5	ALL FOUNDATIONS	3.5
C - CONTROLLER W/UPS	4	DOUBLE HANDHOLE	13	MAST ARM (L) POLE	20'±L-2 =
D - CONTROLLER	4	SIGNAL POST	2	BRACKET MOUNTED	13
E - MAST ARM POLE		CONTROLLER CAB.	1	PED. PUSHBUTTON	6
30"	15	FIBER OPTIC	13	ELECTRIC SERVICE	13.5
36"	15	ELECTRIC SERVICE	1	SERVICE TO GROUND	13.5
42"	25	GROUND CABLE	1	POST MOUNTED	6

NOTE:
PUSHBUTTON "A" SHALL PLACE A CALL IN PHASES 2 AND 4.
PUSHBUTTON "B" SHALL PLACE A CALL IN PHASES 4 AND 6.
PUSHBUTTON "C" SHALL PLACE A CALL IN PHASES 6 AND 8.
PUSHBUTTON "D" SHALL PLACE A CALL IN PHASES 2 AND 8.

ENERGY COST TO : ILLINOIS DEPARTMENT OF TRANSPORTATION
DIVISION OF HIGHWAYS / DISTRICT 1
201 WEST CENTER COURT / SCHAUMBURG, IL 60196-1096

ENERGY SUPPLY: CONTACT: MICKI MULERO-WILLIAMS
PHONE: (630) 691-4721
COMPANY: COMED

FILE NAME = 13_CablePlan_Rand&Winslowe.dgn	USER NAME = #USERS	DESIGNED - CH, RP	REVISED -
PLOT SCALE = #SCALE#	PLOT DATE = 1/27/2009	DRAWN - NY	REVISED -
		CHECKED - MJL	REVISED -
		DATE - 1/27/2009	REVISED -

STATE OF ILLINOIS DEPARTMENT OF TRANSPORTATION

CABLE PLAN, PHASE DESIGNATION DIAGRAM AND SUMMARY OF QUANTITIES
U.S. 12 ROUTE (RAND ROAD) AND WINSLOWE DRIVE

SCALE: N.T.S. SHEET NO. OF SHEETS STA. TO STA.

JACOBS ONE NORTH FRANKLIN CHICAGO IL, 60606 312-251-3000

F.A.P. RTE. 334	SECTION 2008-08-31	COUNTY COOK	TOTAL SHEETS 80	SHEET NO. 24
CONTRACT NO. 60F87				
FED. ROAD DIST. NO. [ILLINOIS] FED. AID PROJECT				