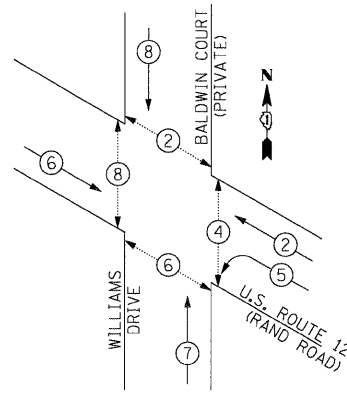


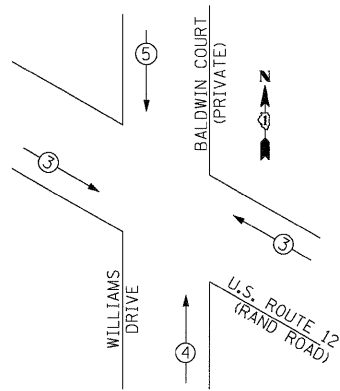
1/27/2009
 FILE NAME = 15_TempCablePlan_Rand&Williams.dgn
 USER NAME = #USER#
 DESIGNED - CH, RP
 DRAWN - NY
 CHECKED - MJL, ER
 DATE - 1/22/2009
 REVISIONS -
 REVISIONS -
 REVISIONS -
 REVISIONS -

TEMPORARY CONTROLLER SEQUENCE



- LEGEND**
- → DUAL ENTRY PHASE
 - → SINGLE ENTRY PHASE
 - ◊ → OVERLAP
 - → PEDESTRIAN PHASE
 - NUMBER REFERS TO ASSOCIATED PHASE

TEMPORARY PHASE DESIGNATION DIAGRAM
 EMERGENCY VEHICLE PREEMPTION SEQUENCE



PROPOSED EMERGENCY VEHICLE PREEMPTORS

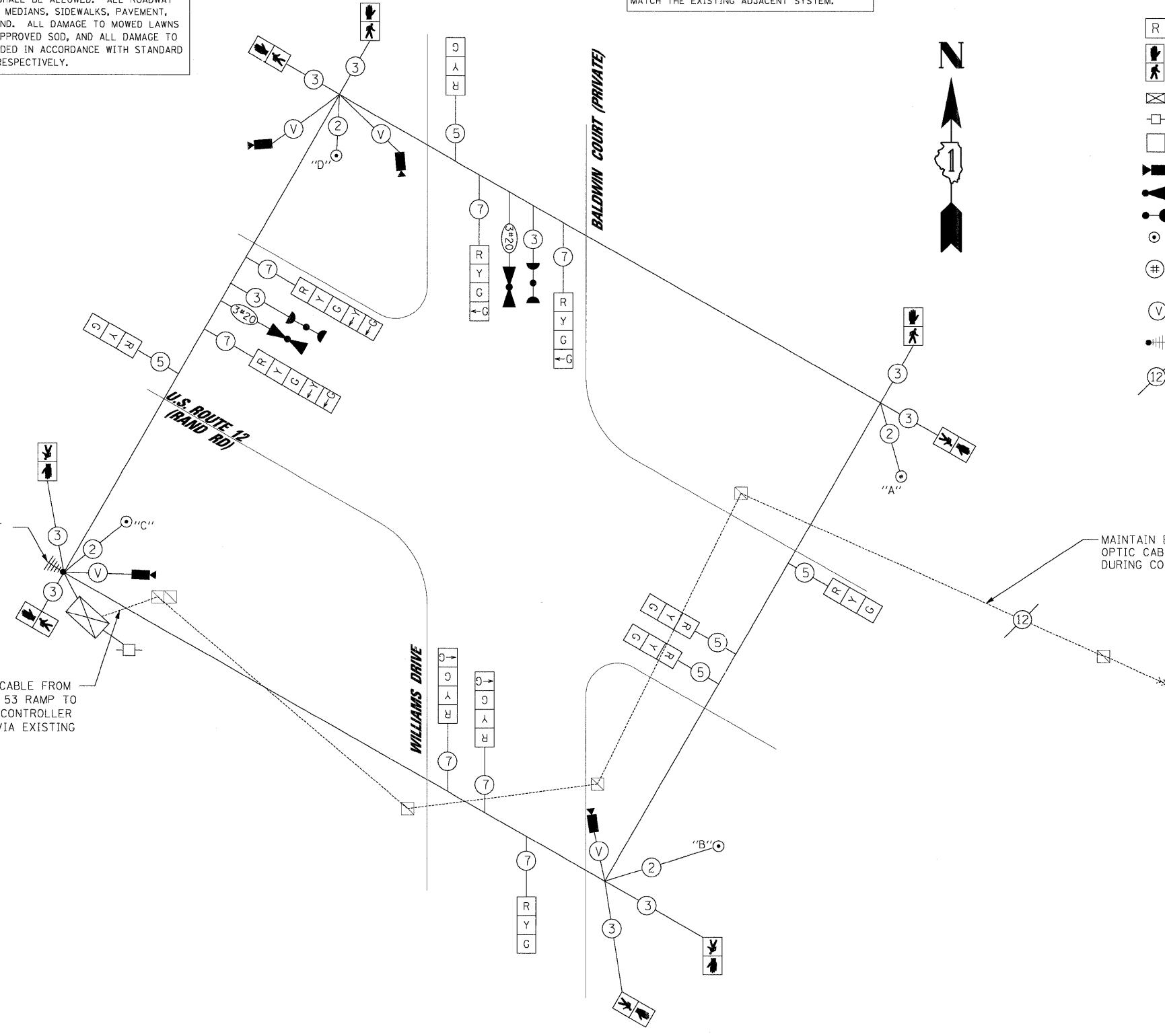
EMERGENCY VEHICLE PREEMPTOR	3	4	5
MOVEMENT	↘	↑	↓

RESTORATION OF WORK AREA, RESTORATION OF THE TRAFFIC SIGNAL
 WORK AREA SHALL BE INCIDENTAL TO THE RELATED PAY ITEM SUCH AS FOUNDATION, CONDUIT, HANDHOLE, TRENCH AND BACKFILL, ETC., AND NO EXTRA COMPENSATION SHALL BE ALLOWED. ALL ROADWAY SURFACES SUCH AS SHOULDERS, MEDIANS, SIDEWALKS, PAVEMENT, ETC. SHALL BE REPLACED IN KIND. ALL DAMAGE TO MOWED LAWNS SHALL BE REPLACED WITH AN APPROVED SOD, AND ALL DAMAGE TO UNMOWED FIELDS SHALL BE SEEDING IN ACCORDANCE WITH STANDARD SPECIFICATIONS 252 AND 250 RESPECTIVELY.

NOTE:
 THE TRAFFIC SIGNAL CONTROLLER EQUIPMENT FOR THIS PROJECT SHALL BE "ECONOLITE" TO MATCH THE EXISTING ADJACENT SYSTEM.

TEMPORARY CABLE DIAGRAM LEGEND

- ⊠ TEMPORARY TRAFFIC SIGNAL SECTION
- ⊠ 12" PEDESTRIAN SIGNAL SECTION
C/D INDICATES COUNTDOWN SIGNAL HEAD
- ⊠ TEMPORARY CONTROLLER CABINET
- ⊠ TEMPORARY SERVICE INSTALLATION
- ⊠ VEHICLE DETECTOR, INDUCTION LOOP
- ⊠ VEHICLE DETECTION CAMERA
- ⊠ EMERGENCY VEHICLE LIGHT DETECTOR
- ⊠ CONFIRMATION BEACON
- ⊠ PEDESTRIAN PUSHBUTTON
- # DENOTES NUMBER OF CONDUCTORS IN CABLE. ALL CABLE NO. 14 AWG. WIRE UNLESS OTHERWISE NOTED.
- ⊠ V VENDOR CABLE
- ⊠ RADIO INTERCONNECT
- ⊠ EXISTING INTERCONNECT CABLE - NO. 62.5/125 12F FIBER OPTIC CABLE



TEMPORARY RADIO INTERCONNECT TO WINSLOW DRIVE

EXISTING INTERCONNECT CABLE FROM WEST FRONTAGE ROAD/IL 53 RAMP TO CONNECT TO TEMPORARY CONTROLLER AT RAND AND WILLIAMS VIA EXISTING DOUBLE HANDHOLE.

MAINTAIN EXISTING 12 MM FIBER OPTIC CABLE TO WEST FRONTAGE ROAD DURING CONSTRUCTION

I.D.O.T. TRAFFIC SIGNAL INSTALLATION ELECTRICAL SERVICE REQUIREMENTS

TYPE	NO. OF LAMPS	WATTAGE		% OPERATION	TOTAL WATTAGE
		INCAND.	LED		
SIGNAL (RED)	12	17	0.50	102.0	
(YELLOW)	12	25	0.25	75.0	
(GREEN)	12	15	0.25	45.0	
ARROW	8	12	0.10	9.6	
PED. SIGNAL	8	25	1.0	200.0	
CONTROLLER	1	100	1.0	100.0	
ILLUM. SIGN	-	25	1.0	-	
FLASHER	-	-	-	-	
TOTAL =					531.6

ENERGY COST TO : ILLINOIS DEPARTMENT OF TRANSPORTATION
 DIVISION OF HIGHWAYS / DISTRICT 1
 201 WEST CENTER COURT / SCHAMBURG, IL 60196-1096

ENERGY SUPPLY: CONTACT: MICKI MULERO-WILLIAMS
 PHONE: (630) 691-4721
 COMPANY: COWI

FOUNDATION (DEPTH)	(FT.)	CABLE SLACK	(FT.)	VERTICAL	(FT.)
TYPE A - POST	4	HANDHOLE	6.5	ALL FOUNDATIONS	3.5
C - CONTROLLER W/UPS	4	DOUBLE HANDHOLE	13	MAST ARM (L) POLE	20'HL-2 =
D - CONTROLLER	4	SIGNAL POST	2	BRACKET MOUNTED	13
E - MAST ARM POLE		CONTROLLER CAB.	1	PED. PUSHBUTTON	6
30"	15	FIBER OPTIC	13	ELECTRIC SERVICE	13.5
36"	15	ELECTRIC SERVICE	1	SERVICE TO GROUND	13.5
42"	25	GROUND CABLE	1	POST MOUNTED	6

NOTE:
 PUSHBUTTON "A" SHALL PLACE A CALL IN PHASES 2 AND 4.
 PUSHBUTTON "B" SHALL PLACE A CALL IN PHASES 4 AND 6.
 PUSHBUTTON "C" SHALL PLACE A CALL IN PHASES 6 AND 8.
 PUSHBUTTON "D" SHALL PLACE A CALL IN PHASES 2 AND 8.

STATE OF ILLINOIS DEPARTMENT OF TRANSPORTATION

TEMPORARY CABLE PLAN
TEMPORARY PHASE DESIGNATION DIAGRAM
U.S. ROUTE 12 (RAND ROAD) AND WILLIAMS DRIVE

SCALE: N.T.S. SHEET NO. OF SHEETS STA. TO STA.

JACOBS ONE NORTH FRANKLIN CHICAGO IL, 60606 312-251-3000

F.A.P. RTE.	SECTION	COUNTY	TOTAL SHEETS	SHEET NO.
334	2008-08-31	COOK	80	26
CONTRACT NO. 60F87				
FED. ROAD DIST. NO.		ILLINOIS FED. AID PROJECT		