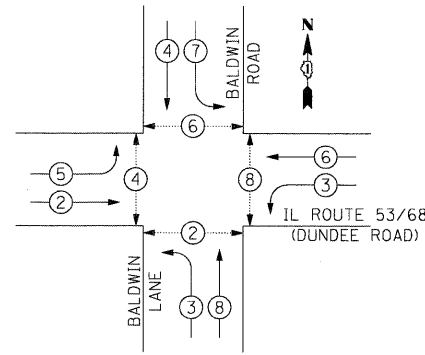


1/27/2009  
 P:\2009\C93570B\CADD\Sheet\19\_CablePlan\_Dundee&Baldwin.dgn  
 FILE NAME = USER NAME = #USER#  
 19\_CablePlan\_Dundee&Baldwin.dgn  
 PLOT SCALE = #SCALE#  
 PLOT DATE = 1/27/2009

**CONTROLLER SEQUENCE**

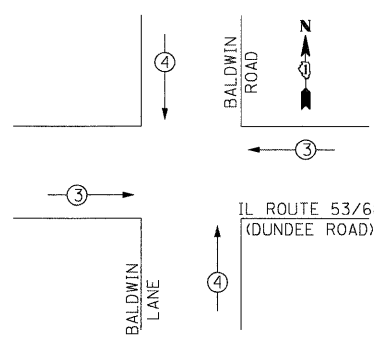


**LEGEND**

- ◀ ○ ▶ DUAL ENTRY PHASE
- ◀ □ ▶ SINGLE ENTRY PHASE
- ◀ ◇ ▶ OVERLAP
- ◀ ○ ▶ PEDESTRIAN PHASE
- NUMBER REFERS TO ASSOCIATED PHASE

**PHASE DESIGNATION DIAGRAM**

**EMERGENCY VEHICLE PREEMPTION SEQUENCE**

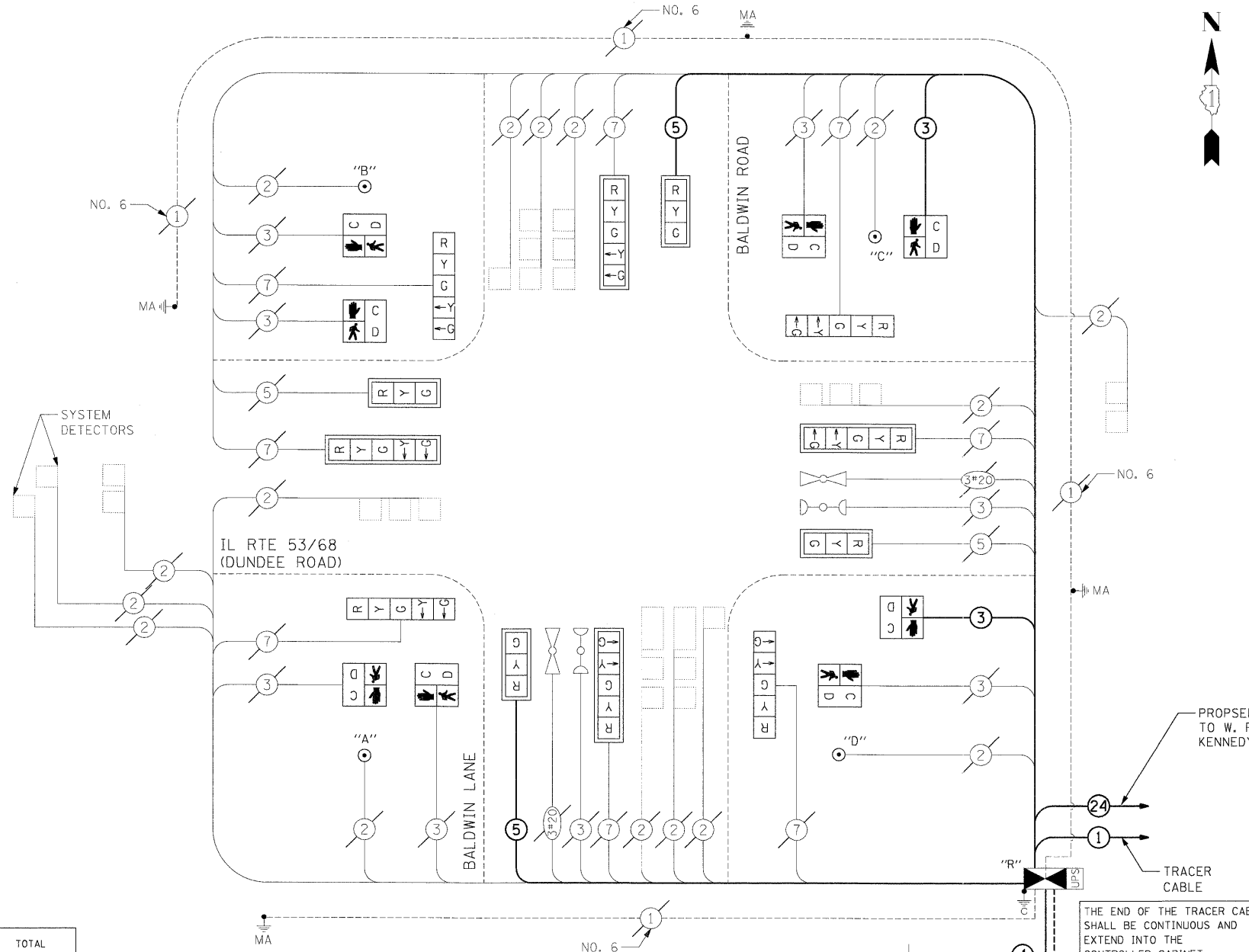


**PROPOSED EMERGENCY VEHICLE PREEMPTORS**

EMERGENCY VEHICLE PREEMPTOR	3	4
MOVEMENT	→	↑

RESTORATION OF WORK AREA, RESTORATION OF THE TRAFFIC SIGNAL WORK AREA SHALL BE INCIDENTAL TO THE RELATED PAY ITEM SUCH AS FOUNDATION, CONDUIT, HANDHOLE, TRENCH AND BACKFILL, ETC., AND NO EXTRA COMPENSATION SHALL BE ALLOWED. ALL ROADWAY SURFACES SUCH AS SHOULDERS, MEDIANS, SIDEWALKS, PAVEMENT, ETC. SHALL BE REPLACED IN KIND. ALL DAMAGE TO MOWED LAWNS SHALL BE REPLACED WITH AN APPROVED SOD, AND ALL DAMAGE TO UNMOWED FIELDS SHALL BE SEEDING IN ACCORDANCE WITH STANDARD SPECIFICATIONS 252 AND 250 RESPECTIVELY.

NOTE: THE TRAFFIC SIGNAL CONTROLLER EQUIPMENT FOR THIS PROJECT SHALL BE "ECONOLITE" TO MATCH THE EXISTING ADJACENT SYSTEM.



- CABLE PLAN LEGEND**
- |                 |                 |   |
|-----------------|-----------------|---|
| <b>EXISTING</b> | <b>PROPOSED</b> |   |
| ⊗               | ⊗               | 8" TRAFFIC SIGNAL SECTION   |
| ⊙               | ⊙               | 12" TRAFFIC SIGNAL SECTION  |
| ⊗               | ⊗               | 12" PEDESTRIAN SIGNAL SECTION   |
| ⊗               | ⊗               | C/D INDICATES COUNTDOWN SIGNAL HEAD   |
| ⊗               | ⊗               | CONTROLLER CABINET  |
| ⊗               | ⊗               | SERVICE INSTALLATION  |
| ⊗               | ⊗               | VEHICLE DETECTOR, INDUCTION LOOP  |
| ⊗               | ⊗               | EMERGENCY VEHICLE LIGHT DETECTOR  |
| ⊗               | ⊗               | CONFIRMATION BEACON   |
| ⊗               | ⊗               | PEDESTRIAN PUSHBUTTON   |
| #               | #               | # DENOTES NUMBER OF CONDUCTORS. ALL CABLE NO. 14 EXCEPT AS INDICATED. ALL LOOP DETECTOR CABLE TO BE SHIELDED. |
| ①               | ①               | NO. 14 1/C TRACER CABLE   |
| ②               | ②               | FIBER OPTIC CABLE IN CONDUIT NO. 62.5/125 MM-12F SM-12F   |
| ⊗               | ⊗               | SIGNAL FACE WITH BACKPLATE  |
| "P"             | "P"             | "P" INDICATES PROGRAMMED HEAD   |
| ⊗               | ⊗               | ILLUMINATED SIGN, FIBER OPTIC "NO LEFT TURN"  |
| ⊗               | ⊗               | ILLUMINATED SIGN, FIBER OPTIC "NO RIGHT TURN"   |
| ⊗               | ⊗               | TELEPHONE CONNECTION  |
| H/C             | H/C             | GROUND ROD AT HANDHOLE (H), DOUBLE HANDHOLE(H), OR CONTROLLER(C)  |
| P               | P               | GROUND ROD AT POST (P) OR MAST ARM POLE (MA)  |
| S               | S               | GROUND ROD AT ELECTRICAL SERVICE  |
| ⊗               | ⊗               | UNINTERRUPTIBLE POWER SUPPLY  |
| "R"             | "R"             | RELOCATED   |

**CONSTRUCTION NOTE:**  
 EXISTING SIGNAL CABLING TO BE MAINTAINED. NEW CABLING TO BE INSTALLED IN EXISTING CONDUIT FOR ADDITIONAL SIGNAL HEADS (2) AND PEDESTRIAN SIGNAL HEADS (2).

**SCHEDULE OF QUANTITIES**

ITEM	UNIT	TOTAL
PORTLAND CEMENT CONCRETE SIDEWALK 5 INCH	SQ FT	62
DETECTABLE WARNINGS	SQ FT	16
COMBINATION CURB AND GUTTER REMOVAL	FOOT	20
SIDEWALK REMOVAL	SQ FT	42
CONCRETE CURB, TYPE B	FOOT	26
COMBINATION CONCRETE CURB AND GUTTER, TYPE B-6.24	FOOT	20
SIGN PANEL - TYPE 1	SQ FT	18
SIGN PANEL - TYPE 2	SQ FT	30
THERMOPLASTIC PAVEMENT MARKING - LINE 6"	FOOT	416
CONDUIT IN TRENCH, 2" DIA., GALVANIZED STEEL	FOOT	64
TRENCH AND BACKFILL FOR ELECTRICAL WORK	FOOT	64
FULL-ACTUATED CONTROLLER AND TYPE IV CABINET, SPECIAL	EACH	1
TRANSCEIVER - FIBER OPTIC	EACH	1
ELECTRIC CABLE IN CONDUIT, SIGNAL NO. 14 5C	FOOT	339
ELECTRIC CABLE IN CONDUIT, SERVICE, NO. 6 2 C	FOOT	158
SIGNAL HEAD, LED, 1-FACE, 3-SECTION, MAST ARM MOUNTED	EACH	4
SIGNAL HEAD, LED, 1-FACE, 5-SECTION, BRACKET MOUNTED	EACH	4
SIGNAL HEAD, LED, 1-FACE, 5-SECTION, MAST ARM MOUNTED	EACH	4
PEDESTRIAN SIGNAL HEAD, LED, 2-FACE, BRACKET MOUNTED WITH COUNTDOWN TIMER	EACH	4
TRAFFIC SIGNAL BACKPLATE, LOUVERED, ALUMINUM	EACH	8
INDUCTIVE LOOP DETECTOR	EACH	12
PEDESTRIAN PUSH-BUTTON	EACH	4
REMOVE EXISTING TRAFFIC SIGNAL EQUIPMENT	EACH	1
INTERCEPT EXISTING CONDUIT	EACH	1
SERVICE INSTALLATION - POLE MOUNTED	EACH	1
UNINTERRUPTIBLE POWER SUPPLY	EACH	1
ELECTRIC CABLE IN CONDUIT, GROUNDING, NO. 6 1C	FOOT	38

**I.D.O.T. TRAFFIC SIGNAL INSTALLATION ELECTRICAL SERVICE REQUIREMENTS**

TYPE	NO. OF LAMPS	x INCAND.	WATTAGE LED	x % OPERATION	TOTAL WATTAGE
SIGNAL (RED)	12		17	0.50	102.0
(YELLOW)	12		25	0.25	75.0
(GREEN)	12		15	0.25	45.0
ARROW	16		12	0.10	19.2
PED. SIGNAL	8		25	1.0	200.0
CONTROLLER	1		100	1.0	100.0
ILLUM. SIGN	-		25	1.0	-
FLASHER	-		-	-	-
<b>TOTAL</b>					<b>541.2</b>

FOUNDATION (DEPTH)	(FT.)	CABLE SLACK	(FT.)	VERTICAL	(FT.)
TYPE A - POST	4	HANDHOLE	6.5	ALL FOUNDATIONS	3.5
C - CONTROLLER W/UPS	4	DOUBLE HANDHOLE	13	MAST ARM (L) POLE	20'+L-2 =
D - CONTROLLER	4	SIGNAL POST	2	BRACKET MOUNTED	13
E - MAST ARM POLE		CONTROLLER CAB.	1	PED. PUSHBUTTON	6
30"	15	FIBER OPTIC	13	ELECTRIC SERVICE	13.5
36"	15	ELECTRIC SERVICE	1	SERVICE TO GROUND	13.5
42"	25	GROUND CABLE	1	POST MOUNTED	6

ENERGY COST TO : ILLINOIS DEPARTMENT OF TRANSPORTATION  
 DIVISION OF HIGHWAYS / DISTRICT 1  
 201 WEST CENTER COURT / SCHAUMBURG, IL 60196-1096

ENERGY SUPPLY: CONTACT: MICKI MULERO-WILLIAMS  
 PHONE: (630) 691-4721  
 COMPANY: COMED

NOTE: PUSHBUTTON "A" SHALL PLACE A CALL IN PHASES 2 AND 4. PUSHBUTTON "B" SHALL PLACE A CALL IN PHASES 4 AND 6. PUSHBUTTON "C" SHALL PLACE A CALL IN PHASES 6 AND 8. PUSHBUTTON "D" SHALL PLACE A CALL IN PHASES 8 AND 2.

**STATE OF ILLINOIS DEPARTMENT OF TRANSPORTATION**

**CABLE PLAN, PHASE DESIGNATION DIAGRAM AND SUMMARY OF QUANTITIES**  
 IL ROUTE 53 / 68 (DUNDEE ROAD AND BALDWIN ROAD)  
 SCALE: N.T.S. SHEET NO. OF SHEETS STA. TO STA.

**JACOBS** ONE NORTH FRANKLIN CHICAGO IL, 60606 312-251-3000

F.A.P. RTE.	SECTION	COUNTY	TOTAL SHEETS	SHEET NO.
334	2008-08-31	COOK	80	30

CONTRACT NO. 60F87  
 FED. ROAD DIST. NO. ILLINOIS FED. AID PROJECT