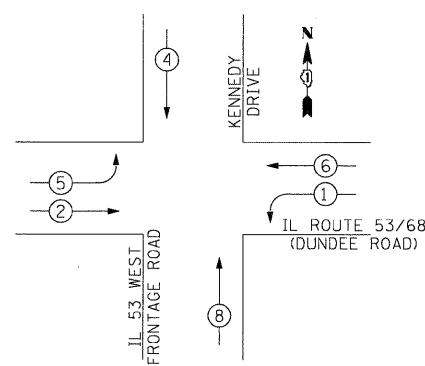


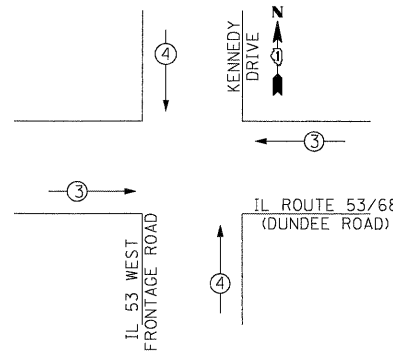
1/27/2009
 FILE NAME = USER NAME = #USER#
 23_CablePlan_Dundee&Kennedy.dgn
 DESIGNED - CH, RP
 DRAWN - NY
 PLOT SCALE = #SCALE#
 PLOT DATE = 1/27/2009
 PA_200901272009_CablePlan_Dundee&Kennedy.dgn

CONTROLLER SEQUENCE



- LEGEND**
- ⊕ DUAL ENTRY PHASE
 - ⊖ SINGLE ENTRY PHASE
 - ◇ OVERLAP
 - ⊕ PEDESTRIAN PHASE
 - # NUMBER REFERS TO ASSOCIATED PHASE

PHASE DESIGNATION DIAGRAM
EMERGENCY VEHICLE PREEMPTION SEQUENCE



PROPOSED EMERGENCY VEHICLE PREEMPTORS		
EMERGENCY VEHICLE PREEMPTOR	3	4
MOVEMENT	←→	↕

RESTORATION OF WORK AREA, RESTORATION OF THE TRAFFIC SIGNAL WORK AREA SHALL BE INCIDENTAL TO THE RELATED PAY ITEM SUCH AS FOUNDATION, CONDUIT, HANDHOLE, TRENCH AND BACKFILL, ETC., AND NO EXTRA COMPENSATION SHALL BE ALLOWED. ALL ROADWAY SURFACES SUCH AS SHOULDERS, MEDIANS, SIDEWALKS, PAVEMENT, ETC. SHALL BE REPLACED IN KIND. ALL DAMAGE TO MOWED LAWNS SHALL BE REPLACED WITH AN APPROVED SOD, AND ALL DAMAGE TO UNMOWED FIELDS SHALL BE SEEDED IN ACCORDANCE WITH STANDARD SPECIFICATIONS 252 AND 250 RESPECTIVELY.

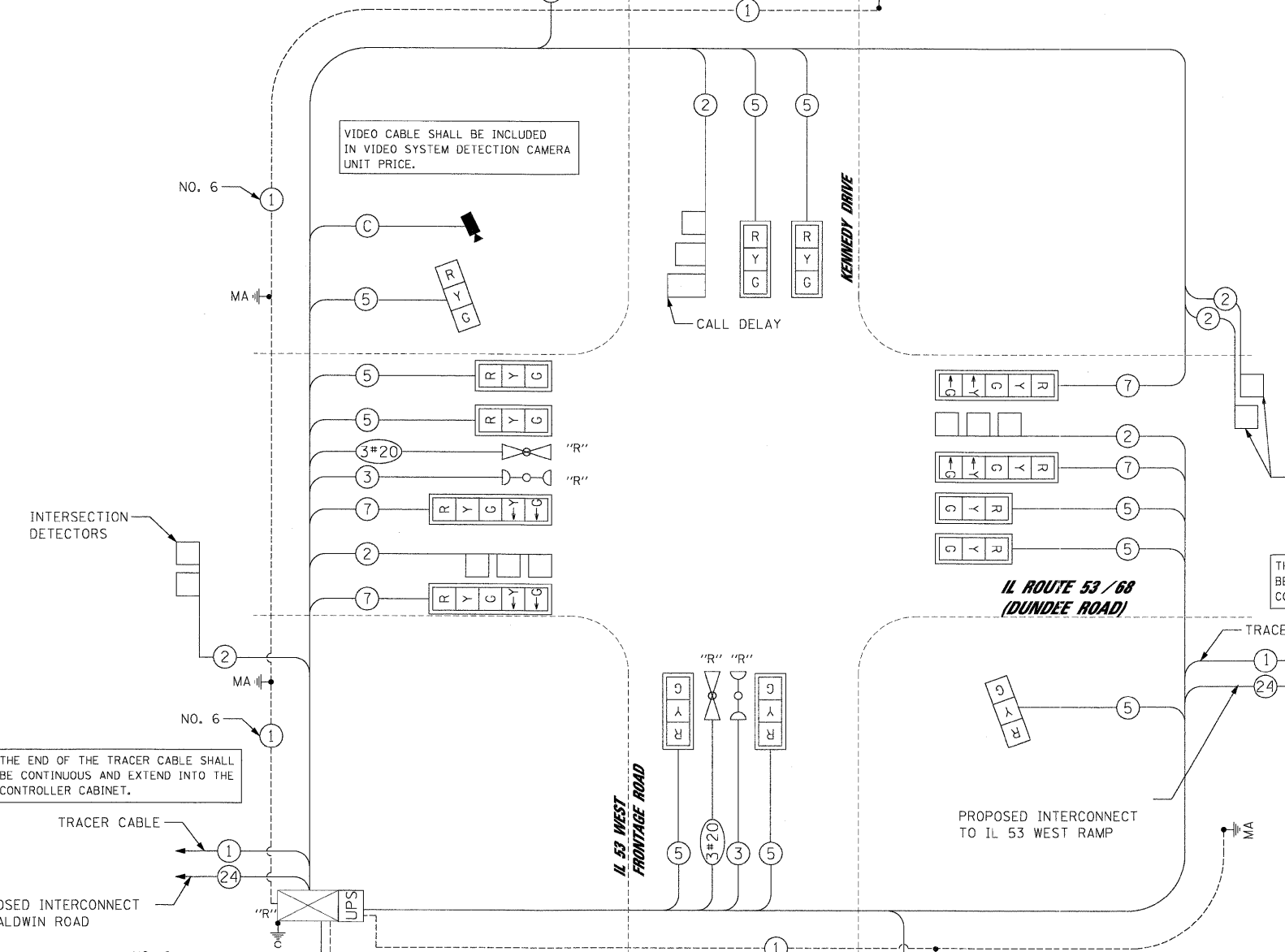
NOTE:
 THE TRAFFIC SIGNAL CONTROLLER EQUIPMENT FOR THIS PROJECT SHALL BE "ECONOLITE" TO MATCH THE EXISTING ADJACENT SYSTEM.

CABLE PLAN LEGEND

- | | |
|--|---|
| | 8" TRAFFIC SIGNAL SECTION |
| | 12" TRAFFIC SIGNAL SECTION |
| | 12" PEDESTRIAN SIGNAL SECTION |
| | C/D INDICATES COUNTDOWN SIGNAL HEAD |
| | CONTROLLER CABINET |
| | SERVICE INSTALLATION |
| | VEHICLE DETECTOR, INDUCTION LOOP |
| | EMERGENCY VEHICLE LIGHT DETECTOR |
| | CONFIRMATION BEACON |
| | PEDESTRIAN PUSHBUTTON |
| | # DENOTES NUMBER OF CONDUCTORS. ALL CABLE NO. 14 EXCEPT AS INDICATED. ALL LOOP DETECTOR CABLE TO BE SHIELDED. |
| | NO. 14 1/C TRACER CABLE |
| | FIBER OPTIC CABLE IN CONDUIT NO. 62.5/125 MM-12F SM-12F |
| | SIGNAL FACE WITH BACKPLATE |
| | "P" INDICATES PROGRAMMED HEAD |
| | ILLUMINATED SIGN, FIBER OPTIC "NO LEFT TURN" |
| | ILLUMINATED SIGN, FIBER OPTIC "NO RIGHT TURN" |
| | TELEPHONE CONNECTION |
| | GROUND ROD AT HANDHOLE (H), DOUBLE HANDHOLE(H), OR CONTROLLER(C) |
| | GROUND ROD AT POST (P) OR MAST ARM POLE (MA) |
| | GROUND ROD AT ELECTRICAL SERVICE |
| | UNINTERRUPTIBLE POWER SUPPLY |
| | RELOCATED |
| | VIDEO SYSTEM DETECTION CAMERA |
| | VIDEO DETECTION CAMERA CABLE |

SCHEDULE OF QUANTITIES

ITEM	UNIT	TOTAL
COMBINATION CURB AND GUTTER REMOVAL	FOOT	170
MEDIAN REMOVAL	SO FT	312
COMBINATION CONCRETE CURB AND GUTTER, TYPE B-6.12	FOOT	170
CONCRETE MEDIAN SURFACE, 4 INCH	SO FT	312
SIGN PANEL - TYPE 2	SO FT	70
THERMOPLASTIC PAVEMENT MARKING - LINE 24"	FOOT	128
THERMOPLASTIC PAVEMENT MARKING REMOVAL	SO FT	109
CONDUIT IN TRENCH, 2" DIA., GALVANIZED STEEL	FOOT	406
CONDUIT IN TRENCH, 1 1/2" DIA., GALVANIZED STEEL	FOOT	26
CONDUIT IN TRENCH, 3" DIA., GALVANIZED STEEL	FOOT	40
CONDUIT IN TRENCH, 4" DIA., GALVANIZED STEEL	FOOT	12
CONDUIT PUSHED, 2" DIA., GALVANIZED STEEL	FOOT	294
CONDUIT PUSHED, 4" DIA., GALVANIZED STEEL	FOOT	262
HANDHOLE	EACH	5
HEAVY-DUTY HANDHOLE	EACH	3
DOUBLE HANDHOLE	EACH	1
TRENCH AND BACKFILL FOR ELECTRICAL WORK	FOOT	484
ELECTRIC CABLE IN CONDUIT, SIGNAL NO. 14 3C	FOOT	319
ELECTRIC CABLE IN CONDUIT, SIGNAL NO. 14 5C	FOOT	1,829
ELECTRIC CABLE IN CONDUIT, SIGNAL NO. 14 7C	FOOT	797
ELECTRIC CABLE IN CONDUIT, LEAD-IN, NO. 14 1 PAIR	FOOT	1,709
ELECTRIC CABLE IN CONDUIT, SERVICE, NO. 6 2 C	FOOT	130
TRAFFIC SIGNAL POST, GALVANIZED STEEL 14 FT.	EACH	2
STEEL COMBINATION MAST ARM ASSEMBLY AND POLE 42 FT.	EACH	1
STEEL COMBINATION MAST ARM ASSEMBLY AND POLE 48 FT.	EACH	1
STEEL COMBINATION MAST ARM ASSEMBLY AND POLE WITH DUAL MAST ARMS, 26 FT. AND 38 FT.	EACH	1
STEEL COMBINATION MAST ARM ASSEMBLY AND POLE WITH DUAL MAST ARMS, 44 FT. AND 34 FT.	EACH	1
CONCRETE FOUNDATION, TYPE A	FOOT	8
CONCRETE FOUNDATION, TYPE C	FOOT	4
CONCRETE FOUNDATION, TYPE E 36-INCH DIAMETER	FOOT	60
SIGNAL HEAD, LED, 1-FACE, 3-SECTION, MAST ARM MOUNTED	EACH	8
SIGNAL HEAD, LED, 1-FACE, 3-SECTION, BRACKET MOUNTED	EACH	4
SIGNAL HEAD, LED, 1-FACE, 5-SECTION, MAST ARM MOUNTED	EACH	4
TRAFFIC SIGNAL BACKPLATE, LOUVERED, ALUMINUM	EACH	12
INDUCTIVE LOOP DETECTOR	EACH	6
DETECTOR LOOP, TYPE 1	FOOT	442
TEMPORARY TRAFFIC SIGNAL INSTALLATION	EACH	1
REMOVE EXISTING TRAFFIC SIGNAL EQUIPMENT	EACH	1
REMOVE EXISTING HANDHOLE	EACH	8
REMOVE EXISTING CONCRETE FOUNDATION	EACH	8
VIDEO SYSTEM DETECTION CAMERA, VIDEO SYSTEM DETECTION PROCESSOR	EACH	1
PAVEMENT REPLACEMENT	SO YD	60
SERVICE INSTALLATION - POLE MOUNTED	EACH	1
UNINTERRUPTIBLE POWER SUPPLY	EACH	1
ELECTRIC CABLE IN CONDUIT, GROUNDING, NO. 6 1C	FOOT	376
ELECTRIC CABLE IN CONDUIT NO. 20 3/C, TWISTED, SHIELDED	FOOT	319
RELOCATE EXISTING TRAFFIC SIGNAL CONTROLLER AND CABINET, COMPLETE	EACH	1



I.D.O.T. TRAFFIC SIGNAL INSTALLATION ELECTRICAL SERVICE REQUIREMENTS

TYPE	NO. OF LAMPS	WATTAGE	% OPERATION	TOTAL WATTAGE
SIGNAL (RED)	16	17	0.50	136.0
(YELLOW)	16	25	0.25	100
(GREEN)	16	15	0.25	60
ARROW	8	12	0.10	9.6
PED. SIGNAL	-	25	1.0	-
CONTROLLER	1	100	1.0	100.0
ILLUM. SIGN	-	25	1.0	-
FLASHER	-	-	-	-
TOTAL =				405.6

FOUNDATION (DEPTH)	(FT.)	CABLE SLACK	(FT.)	VERTICAL	(FT.)
TYPE A - POST	4	HANDHOLE	6.5	ALL FOUNDATIONS	3.5
C - CONTROLLER W/UPS	4	DOUBLE HANDHOLE	13	MAST ARM (L) POLE	20'-H-2 =
D - CONTROLLER	4	SIGNAL POST	2	BRACKET MOUNTED	13
E - MAST ARM POLE	-	CONTROLLER CAB.	1	PED. PUSHBUTTON	6
	30"	FIBER OPTIC	13	ELECTRIC SERVICE	13.5
	36"	ELECTRIC SERVICE	1	SERVICE TO GROUND	13.5
	42"	GROUND CABLE	1	POST MOUNTED	6

ENERGY COST TO : ILLINOIS DEPARTMENT OF TRANSPORTATION
 DIVISION OF HIGHWAYS / DISTRICT 1
 201 WEST CENTER COURT / SCHAUMBURG, IL 60196-1096

ENERGY SUPPLY: CONTACT: MICKI MULERO-WILLIAMS
 PHONE: (630) 691-4721
 COMPANY: COMED

STATE OF ILLINOIS
DEPARTMENT OF TRANSPORTATION

CABLE PLAN, PHASE DESIGNATION DIAGRAM
SUMMARY OF QUANTITIES
IL ROUTE 53 / 68 (DUNDEE ROAD) AND KENNEDY DR./IL 53 WEST FRONTAGE ROAD

JACOBS ONE NORTH FRANKLIN
 CHICAGO IL, 60606
 312-251-3000

F.A.P. RTE.	SECTION	COUNTY	TOTAL SHEETS	SHEET NO.
334	2008-08-31	COOK	80	34
CONTRACT NO. 60F87				
FED. ROAD DIST. NO. ILLINOIS FED. AID PROJECT				

FILE NAME = USER NAME = #USER#
 23_CablePlan_Dundee&Kennedy.dgn
 PLOT SCALE = #SCALE#
 PLOT DATE = 1/27/2009

DESIGNED - CH, RP
 DRAWN - NY
 CHECKED - MJL
 DATE - 1/27/2009

REVISED -
 REVISED -
 REVISED -
 REVISED -

SCALE: N.T.S. SHEET NO. OF SHEETS STA. TO STA.