

GENERAL NOTES

- Plan dimensions and details relative to existing structure have been taken from field measurements of visible portions of each vault and building. It shall be the Contractor's responsibility to verify such dimensions and details in the field and make necessary approved adjustments prior to construction or ordering of materials. Such variations shall not be cause for additional compensation for a change in the scope of the work, however, the Contractor will be paid for the quantity actually furnished at the unit price for the work.
- The prospective bidder shall, before submitting a bid, carefully examine the proposal form, plans, Specifications, Special Provisions and form of contract and bond. The bidder shall inspect in detail the streets, the site of the proposed work and the local conditions that affect the detailed requirements of construction. This shall include, but not be limited to, the various pavement cross sections, the condition of the pavements, utilities that are known, unknown or abandoned, unidentified vaults or cavities within the right-of-way and items buried within the right-of-way including railroad tracks and utility structures. The City of Aurora will not accept requests for contract cost increases including compensation for conditions that affect the progress of work.
- It is the contractor's responsibility to field verify all existing conditions regarding state, city, and privately owned utilities. The contractor shall be responsible for ensuring that active utilities (including lighting) remain in-service throughout work operations.
- All active lighting and traffic signal wiring shall be enclosed and protected prior to drilling. Wiring shall be protected with a "Split-duct" conduit system extending through the limits of the vaults as directed by the Engineer.
- Water service lines and meters, sanitary sewer service lines and cleanouts, gas service lines and meters and signal / lighting conduits may be present in the vaults and are shown on the drawings as observed in the field. Contractor shall retain responsibility for protection and location of utilities in accordance with Article 107.31 of the Standard Specifications. Utilities noted on the drawings and others not observed during design are to be adjusted or relocated in accordance with Article 105.07 of the Standard Specifications. Work by the Contractor may include (but is not limited to):
 - Extending sanitary sewer cleanouts (currently located in sidewalk vaults) to the building basement or relocation of same into the building basement;
 - Water supply plumbing work as required to connect the water meter and service relocated within the building basement;
 - Cutoff and removal of wiring for vault lighting (if necessary) in accordance with the local electrical code requirements; and
 - Shift and support existing or proposed signal and street lighting conduit to clear the work area.
 - Any interruption to building services shall be scheduled with input from the City and building Owner, and authorized by the Engineer. Interruptions shall be limited to a maximum of two (2) hours.
- The back face of masonry retaining walls shall be waterproofed according to Article 503.18 of the Standard Specifications unless otherwise noted. Cost shall be included under the unit price bid for Masonry Wall Construction.
- Concrete masonry units (where indicated on plan) shall conform to the Special Provisions.
- All gaps/open joints shall be sealed with a polyurethane sealant that is a one-component high-performance gun-grade moisture-curing polyurethane sealant designed for a wide range of sealing and caulking applications in active exterior joints, including steel, concrete and masonry. The sealant material shall be approved by the Engineer prior to use.
- The final sidewalk grades shall match into the existing sidewalk, and shall slope away from the existing buildings. The proposed sidewalk jointing shall be located in coordination with the vaults to remain, and the existing sidewalk jointing. If sidewalks with brick in-lays are required to be removed to complete the work, the brick in-lays shall be replaced in-kind in the proposed sidewalk. The cost of the brick in-lays shall be included in the item PCC Sidewalk, 5".
- No motorized equipment will be permitted on the existing and proposed vault slabs without written authorization from the Engineer.
- The Contractor shall provide temporary bracing of existing vault walls and ceilings, if needed, prior to removing the concrete sidewalks/vault tops. The Contractor shall also provide protection for the adjacent structure from water/seepage.
- The Contractor shall remove and dispose of all debris and out-of-service utility boxes, conduits, wires, miscellaneous timber, etc. in vaults prior to beginning filling operations. It shall be the Contractor's responsibility to determine which equipment is out-of-service and available to be removed (See Note 3).

- Controlled Low Strength Material (CLSM) work shall conform to applicable portions of Section 593 of the Standard Specifications with the following additional requirements:

Where CLSM is poured against an existing wall not retaining soil Masonry Wall Construction, the CLSM shall be poured in lifts not exceeding 24" deep. Each lift shall be allowed to cure for a minimum of 4 hours before the next lift is poured.

The contractor may, instead, provide bracing and/or cross ties to carry the pressure from the fluid CLSM.

If cross ties are used, wales shall be placed on the interior wall surface to prevent pullout. All wale and tie material shall be removed from the basement and damage to the existing wall shall be patched to the satisfaction of the Engineer when the forms are removed.

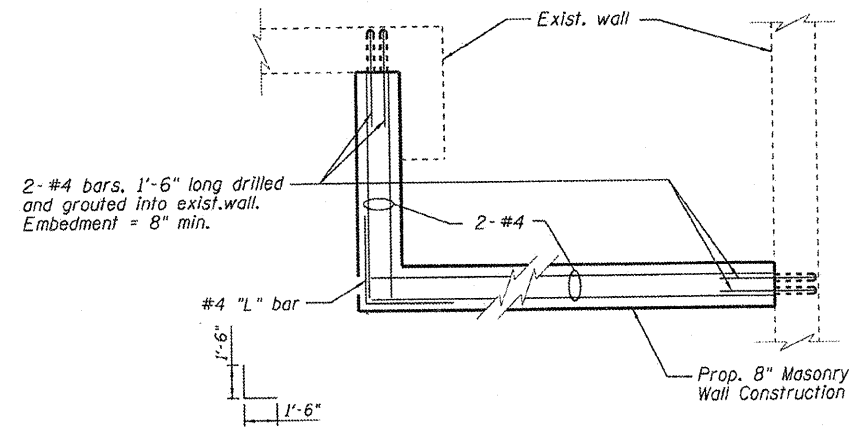
- The Contractor shall contact the property owner prior to beginning work on the respective vaults and coordinate the work. In order to complete the work indicated, the Contractor may need to temporarily access private property. In addition to coordinating access with the owner, the Contractor shall be responsible for obtaining appropriate building permits and approvals from the local building official with jurisdiction.
- In addition to requirements set forth in Article 107.09, pedestrian traffic shall be protected during construction in accordance with Section 3306 of the most recent version of the International Building Code.
- The cost for Reinforcement Bars, drilling and grouting bars and grout provided for the wall/bond beam detail shall be included with the item Masonry Wall Construction.
- Reinforcement bars shall conform to the requirements of ASTM A 706 GR 60. See Special Provisions.
- The cost of all utility removal, relocation, maintenance, and protection required to complete the vault filling work as shown shall be included in the cost of the associated pay items.
- Masonry Wall Construction

The Contractor may construct a reinforced concrete wall as a substitution for Masonry Wall Construction. If the Contractor chooses this alternative, the following requirements apply:

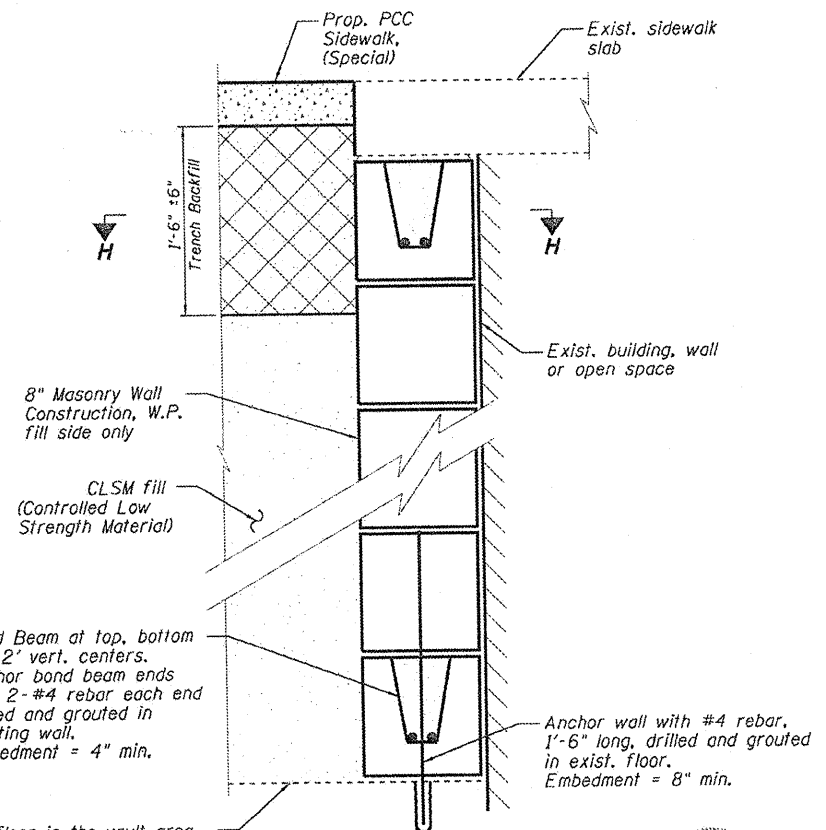
- Wall shall be 7 1/2" to 8" thick.
- The dowels, corner bars and reinforcing bars shown for the Masonry Wall Construction shall be used. Horizontal #4 bars at 24" on center (each face with 2" clear cover) and corner bars.
- Additional #4 vertical bars shall be included at 48" on center, centered in the wall and at each corner and end.
- Class SI concrete shall be utilized in accordance with Section 503 of the Standard Specifications.
- Completed wall shall be measured and paid for at the per square foot unit price bid for Masonry Wall Construction

TOTAL BILL OF MATERIAL

ITEM	UNIT	TOTAL
Trench Backfill	Cu. Yds.	17.8
Portland Cement Concrete Sidewalk, Special	Sq. Ft.	390
Sidewalk Removal	Sq. Ft.	390
Controlled Low Strength Material	Cu. Yds.	101.1
Concrete Foundation, Type A (Special)	Foot	21
Exploratory Borehole Investigation	Each	4
Masonry Wall Construction	Sq. Ft.	534
Remove Existing Concrete Foundations (Special)	Each	6



**SECTION H-H
TYPICAL WALL SECTION
AT EACH BOND BEAM**



Exist. concrete floor in the vault area to be filled shall be broken to promote drainage prior to fill. Cost for this work shall be included under the unit price bid for Controlled Low Strength Material.

TYPICAL WALL/BOND BEAM DETAIL

