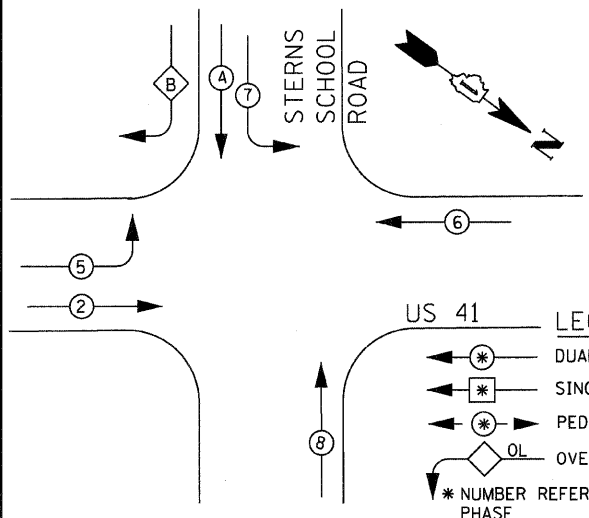


REGINA WEBSTER
AND ASSOC. INC.
CIVIL ENGINEERING CONSULTANTS
610 North Dearborn Street, Suite 500
Chicago, Illinois 60623-1563



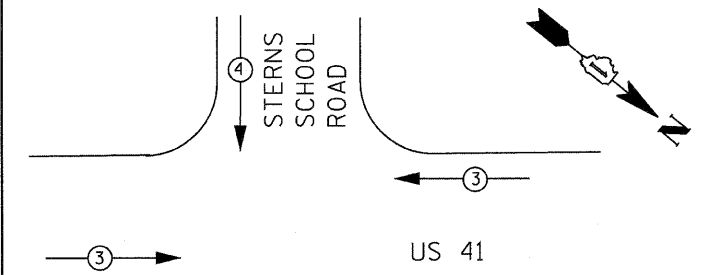
CONTROLLER SEQUENCE

OVERLAP LETTER PERMISSIVE PHASE PROTECTED PHASE
B = 4 + 5

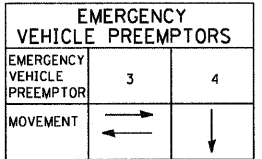


PHASE DESIGNATION DIAGRAM

NOT TO SCALE



EMERGENCY VEHICLE PREEMPTION SEQUENCE



I. D. O. T. TRAFFIC SIGNAL INSTALLATION ELECTRICAL SERVICE REQUIREMENTS

TYPE	NO. LAMPS	WATTAGE		% OPERATIONS	TOTAL WATTAGE
		INCAND.	LED		
SIGNAL (RED)	12	135	17	0.50	102
(YELLOW)	12	135	25	0.25	75
(GREEN)	12	135	15	0.25	45
ARROW	4	135	12	0.10	4.8
PED. SIGNAL	-	90	25	1.00	-
CONTROLLER	1	100	100	1.00	100
ILLUM. SIGN	-	252	25	0.05	-
VIDEO SYSTEM	-	150	-	1.00	-
TOTAL =					326.8

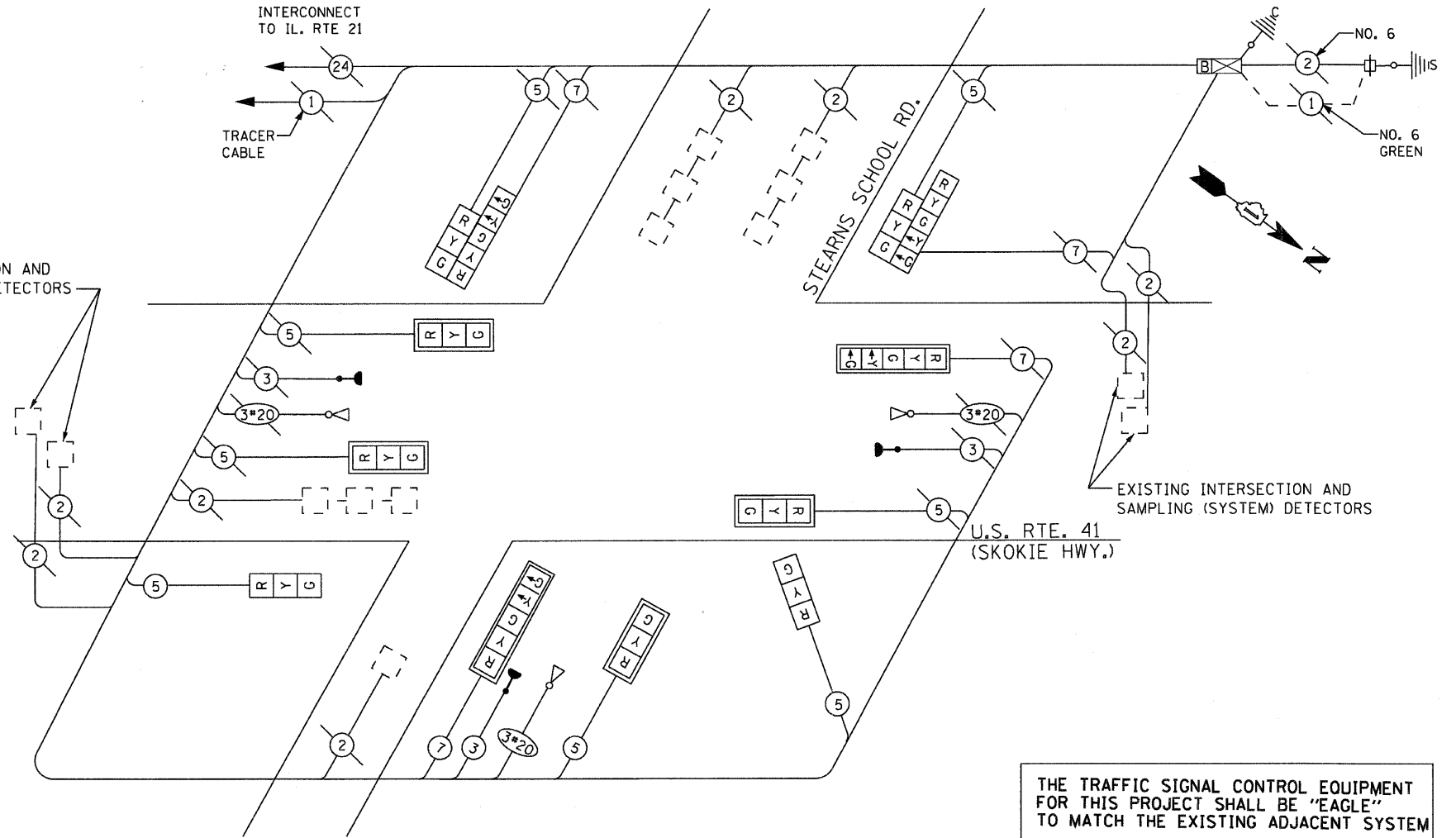
ENERGY COSTS- BILLED TO: IDOT DISTRICT 1
201 WEST CENTER COURT
SCHAMBURG, IL 60196-1096

ENERGY SUPPLY - CONTACT ALICE TAYLOR
PHONE (847) 816-5458
COMPANY COMED

SCHEDULE OF QUANTITIES

ITEM	UNIT	QUANTITY
SIGN PANEL - TYPE II	SQ FT	15
THERMOPLASTIC PAVEMENT MARKING - LINE 24"	FOOT	101
THERMOPLASTIC PAVEMENT MARKING REMOVAL	SQ FT	202
CONDUIT IN TRENCH, 2 1/2" DIA., GALVANIZED STEEL	FOOT	12
TRENCH AND BACKFILL FOR ELECTRICAL WORK	FOOT	12
MAINTENANCE OF EXISTING TRAFFIC SIGNAL INSTALLATION	EACH	1
* ELECTRIC CABLE IN CONDUIT, SIGNAL NO. 14 3C	FOOT	349
ELECTRIC CABLE IN CONDUIT, SIGNAL NO. 14 5C	FOOT	1074
ELECTRIC CABLE IN CONDUIT, SIGNAL NO. 14 7C	FOOT	337
* ELECTRIC CABLE IN CONDUIT NO. 20 3/C, TWISTED, SHIELDED	FOOT	349
DRILL EXISTING HANDHOLE	EACH	3
STEEL COMBINATION MAST ARM ASSEMBLY AND POLE, 34 FT. CONCRETE FOUNDATION, TYPE E 36-INCH DIAMETER	EACH	1
SIGNAL HEAD, L.E.D., 1-FACE, 3-SECTION, BRACKET MOUNTED	FOOT	15
SIGNAL HEAD, L.E.D., 1-FACE, 3-SECTION, MAST ARM MOUNTED	EACH	2
SIGNAL HEAD, L.E.D., 1-FACE, 5-SECTION, MAST ARM MOUNTED	EACH	4
SIGNAL HEAD, L.E.D., 2-FACE, 1-3 SECTION, 1-5 SECTION, BRACKET MOUNTED	EACH	2
TRAFFIC SIGNAL BACKPLATE, LOUVERED, ALUMINUM	EACH	6
* RELOCATE EXISTING EMERGENCY VEHICLE PRIORITY SYSTEM, DETECTOR UNIT	EACH	1
REMOVE EXISTING TRAFFIC SIGNAL EQUIPMENT	EACH	1
REMOVE EXISTING CONCRETE FOUNDATION	EACH	2
TEMPORARY INFORMATION SIGNING	SQ FT	77.1
UNINTERRUPTABLE POWER SUPPLY (UPS)	EACH	1
RELOCATE EXISTING SIGN PANEL ASSEMBLY	SQ FT	9
CONDUIT PUSHED, 4" DIA., GALVANIZED STEEL	FOOT	95
* 100% COST TO VILLAGE OF GURNEE		

FOUNDATION DEPTH	DEPTH (FT.)	CABLE SLACK (FT.)	VERTICAL (FT.)
TYPE A - POST	4	HANDHOLE	6.5
D - CONTROLLER	4	DOUBLE HANDHOLE	13
E - MAST ARM POLE		SIGNAL POST	2
30"	15	CONTROLLER CAB.	1
36"	15	FIBER OPTIC	13
42"	25	ELECTRICAL SERVICE	1
		GROUND CABLE	1



CABLE PLAN

CABLE PLAN LEGEND

EXISTING	PROPOSED	DESCRIPTION
		8" (200mm) TRAFFIC SIGNAL SECTION
		12" (300mm) TRAFFIC SIGNAL SECTION
		12" (300mm) PEDESTRIAN SIGNAL SECTION
		12" (300mm) PEDESTRIAN SIGNAL SECTION
		12" (300mm) PEDESTRIAN SIGNAL SECTION W/ COUNTDOWN TIMER
		RAILROAD CONTROL CABINET
		ILLUMINATED SIGN, FIBER OPTIC "NO LEFT TURN"
		ILLUMINATED SIGN, FIBER OPTIC "NO RIGHT TURN"
		SERVICE INSTALLATION
		TELEPHONE CONNECTION
		MAGNETIC DETECTOR
		EMERGENCY VEHICLE LIGHT DETECTOR
		CONFIRMATION BEACON
		PUSHBUTTON DETECTOR
		VEHICLE DETECTOR, INDUCTION LOOP
		2 DENOTES NUMBER OF CONDUCTORS. ALL CABLE NO. 14 EXCEPT AS INDICATED. ALL LOOP DETECTOR CABLE TO BE SHIELDED.
		GROUND ROD AT HANDHOLE, DOUBLE HANDHOLE, OR CONTROLLER
		GROUND ROD AT POST OR MAST ARM POLE
		GROUND ROD AT ELECTRIC SERVICE INSTALLATION
		GROUND CABLE IN CONDUIT, NO.6 SOLID COPPER (GREEN)
		UNINTERRUPTED POWER SUPPLY

THE TRAFFIC SIGNAL CONTROL EQUIPMENT FOR THIS PROJECT SHALL BE "EAGLE" TO MATCH THE EXISTING ADJACENT SYSTEM