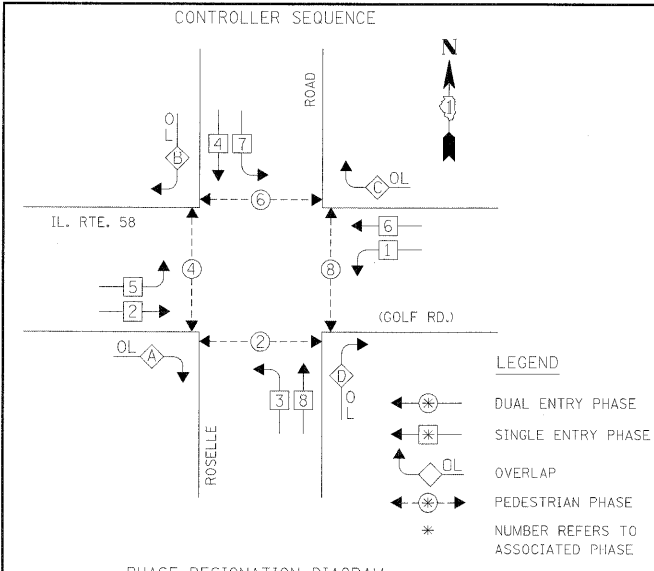


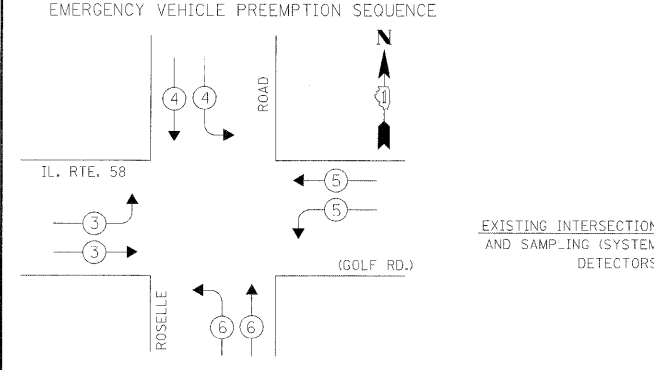
SURVEYED BY: DATE: \_\_\_\_\_  
 PLOTTED BY: DATE: \_\_\_\_\_  
 CHECKED BY: DATE: \_\_\_\_\_  
 NOTE BOOK NO.: \_\_\_\_\_  
 PAID FILE NAME: \_\_\_\_\_  
 PROJECT: \_\_\_\_\_  
 DATE: \_\_\_\_\_  
 BY: \_\_\_\_\_  
 CHECKED BY: \_\_\_\_\_  
 DATE: \_\_\_\_\_  
 FILE NAME: ...\\CAB.IL58 @ Roselle.dgn

**CHRISTOPHER B. BURKE ENGINEERING LTD.**  
 9575 West Higgins Road, Suite 600  
 Rosemont, Illinois 60018  
 (847) 823-0500



**RIGHT TURN OVERLAP PHASE DESIGNATION**

OVERLAP LETTER	PERMISSIVE PHASE	PROTECTED PHASE
A	2	3
B	4	5
C	6	7
D	8	1



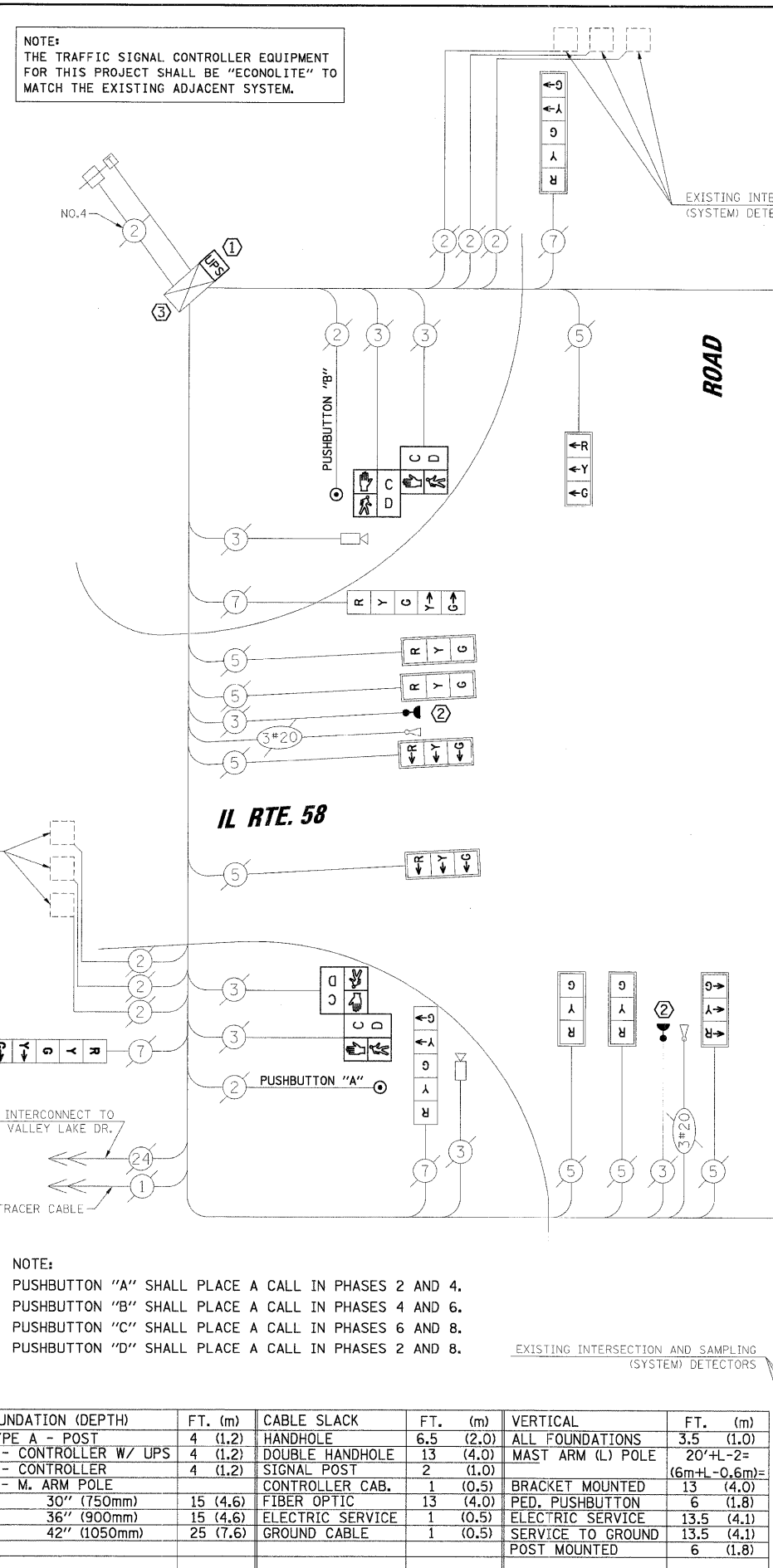
**PROPOSED EMERGENCY VEHICLE PREEMPTORS**

EMERGENCY VEHICLE PREEMPTOR	3	4	5	6
MOVEMENT	→	←	←	→

**I.D.O.T. TRAFFIC SIGNAL INSTALLATION ELECTRICAL SERVICE REQUIREMENTS**

TYPE	NO. OF LAMPS	WATTAGE X INCAND.	LED	% OPERATION	TOTAL WATTAGE
SIGNAL (RED)	24	17	0.50	204.00	
(YELLOW)	24	25	0.25	150.00	
(GREEN)	24	15	0.25	90.00	
ARROW	16	12	0.10	19.20	
PED. SIGNAL	8	25	1.00	200.00	
CONTROLLER	1	100	1.00	100.00	
ILLUM. SIGN	-	252	0.05	-	
VIDEO SYSTEM	1	150	1.00	150.00	
FLASHER			0.50		
<b>ENERGY COSTS TO:</b>			<b>TOTAL =</b>		<b>913.20</b>

**ILLINOIS DEPARTMENT OF TRANSPORTATION**  
 DIVISION OF HIGHWAY/DISTRICT 1  
 201 WEST CENTER COURT/SCHAUMBURG, ILLINOIS 60196-1096  
 ENERGY SUPPLY: CONTACT: MARK GLOECK  
 PHONE: (630) 691-4529  
 COMPANY: COMED



**FOUNDATION (DEPTH)**

TYPE	FT. (m)	CABLE SLACK	FT. (m)	VERTICAL	FT. (m)
A - POST	4 (1.2)	HANDHOLE	6.5 (2.0)	ALL FOUNDATIONS	3.5 (1.0)
C - CONTROLLER W/ UPS	4 (1.2)	DOUBLE HANDHOLE	13 (4.0)	MAST ARM (L) POLE	20'±L-2'±
D - CONTROLLER	4 (1.2)	SIGNAL POST	2 (0.6)		(6m±L-0.6m)±
E - M. ARM POLE		CONTROLLER CAB.	1 (0.5)	BRACKET MOUNTED	13 (4.0)
	30" (750mm)	FIBER OPTIC	13 (4.0)	PED. PUSHBUTTON	6 (1.8)
	36" (900mm)	ELECTRIC SERVICE	1 (0.5)	ELECTRIC SERVICE	13.5 (4.1)
	42" (1050mm)	GROUND CABLE	1 (0.5)	SERVICE TO GROUND	13.5 (4.1)
				POST MOUNTED	6 (1.8)

RESTORATION OF WORK AREA. RESTORATION OF THE TRAFFIC SIGNAL WORK AREA SHALL BE INCIDENTAL TO THE RELATED PAY ITEM SUCH AS FOUNDATION, CONDUIT, HANDHOLE, TRENCH AND BACKFILL, ETC., AND NO EXTRA COMPENSATION SHALL BE ALLOWED. ALL ROADWAY SURFACES SUCH AS SHOULDERS, MEDIANS, SIDEWALKS, PAVEMENT, ETC. SHALL BE REPLACED IN KIND. ALL DAMAGE TO MOWED LAWNS SHALL BE REPLACED WITH AN APPROVED SOD, AND ALL DAMAGE TO UNMOWED FIELDS SHALL BE SEED IN ACCORDANCE WITH STANDARD SPECIFICATIONS 252 AND 250 RESPECTIVELY.

**CABLE PLAN LEGEND**

EXISTING	PROPOSED	DESCRIPTION
(Symbol)	(Symbol)	8" (200mm) TRAFFIC SIGNAL SECTION
(Symbol)	(Symbol)	12" (300mm) TRAFFIC SIGNAL SECTION
(Symbol)	(Symbol)	12" (300mm) PEDESTRIAN SIGNAL SECTION
(Symbol)	(Symbol)	12" (300mm) PEDESTRIAN SIGNAL SECTION WITH COUNTDOWN TIMER
(Symbol)	(Symbol)	CONTROLLER CABINET
(Symbol)	(Symbol)	SERVICE INSTALLATION
(Symbol)	(Symbol)	TELEPHONE INSTALLATION
(Symbol)	(Symbol)	VEHICLE DETECTOR, INDUCTION LOOP
(Symbol)	(Symbol)	MAGNETIC DETECTOR
(Symbol)	(Symbol)	EMERGENCY VEHICLE LIGHT DETECTOR
(Symbol)	(Symbol)	CONFIRMATION BEACON
(Symbol)	(Symbol)	PUSHBUTTON DETECTOR
(Symbol)	(Symbol)	DENOTES NUMBER OF CONDUCTORS. ALL CABLE NO. 14 EXCEPT AS INDICATED. ALL LOOP DETECTOR CABLE TO BE SHIELDED.
(Symbol)	(Symbol)	GROUND CABLE IN CONDUIT NO. 6 SOLID COPPER (GREEN)
(Symbol)	(Symbol)	FIBER OPTIC CABLE IN CONDUIT NO. 62.5/125 2-MM12F SM12F
(Symbol)	(Symbol)	SIGNAL FACE WITH BACKPLATE
(Symbol)	(Symbol)	"P" INDICATES PROGRAMMED HEAD.
(Symbol)	(Symbol)	RAILROAD CONTROL CABINET
(Symbol)	(Symbol)	ILLUMINATED SIGN "NO LEFT TURN"
(Symbol)	(Symbol)	ILLUMINATED SIGN "NO RIGHT TURN"
(Symbol)	(Symbol)	GROUND ROD AT HANDHOLE (H), DOUBLE HANDHOLE (H), OR CONTROLLER (C) OR MAST ARM POLE (MA)
(Symbol)	(Symbol)	GROUND ROD AT POST (P) OR MAST ARM POLE (MA)
(Symbol)	(Symbol)	GROUND ROD AT ELECTRIC SERVICE INSTALLATION
(Symbol)	(Symbol)	UNINTERRUPTIBLE POWER SUPPLY (UPS)
(Symbol)	(Symbol)	TELEPHONE CONNECTION
(Symbol)	(Symbol)	IMAGE SENSOR (CCTV CAMERA)
(Symbol)	(Symbol)	VIDEO SIGNAL TRANSMITTER

- CONSTRUCTION NOTES:**
- INSTALL UNINTERRUPTIBLE POWER SUPPLY (UPS).
  - ALL EXISTING CONFIRMATION BEACONS SHALL BE RETROFITTED WITH LED INDICATIONS. THIS WORK SHALL BE INCIDENTAL TO THE PAY ITEM: UNINTERRUPTIBLE POWER SUPPLY.
  - ALL CABINET MODIFICATIONS AND/OR LOAD SWITCH REPLACEMENTS REQUIRED FOR PROPER OPERATION OF THE LED SIGNAL AND LED CONFIRMATION BEACON INDICATIONS TO THE SATISFACTION OF THE ENGINEER SHALL BE INCIDENTAL TO THE PAY ITEM: UNINTERRUPTIBLE POWER SUPPLY.

**SCHEDULE OF QUANTITIES**

ITEM	UNIT	TOTAL
SIGN PANEL - TYPE 1	SQ FT	40
MAINTENANCE OF EXISTING TRAFFIC SIGNAL INSTALLATION	EACH	1
PEDESTRIAN SIGNAL HEAD, LED, 2-FACE, BRACKET MOUNTED WITH COUNTDOWN TIMER	EACH	4
PEDESTRIAN PUSH-BUTTON	EACH	4
REMOVE EXISTING TRAFFIC SIGNAL EQUIPMENT	EACH	1
SIGNAL HEAD, LED, 1-FACE, 3-SECTION, MAST-ARM MOUNTED, RETROFIT	EACH	16
SIGNAL HEAD, LED, 1-FACE, 5-SECTION, BRACKET MOUNTED, RETROFIT	EACH	6
SIGNAL HEAD, LED, 1-FACE, 5-SECTION, MAST-ARM MOUNTED, RETROFIT	EACH	2
UNINTERRUPTIBLE POWER SUPPLY	EACH	1