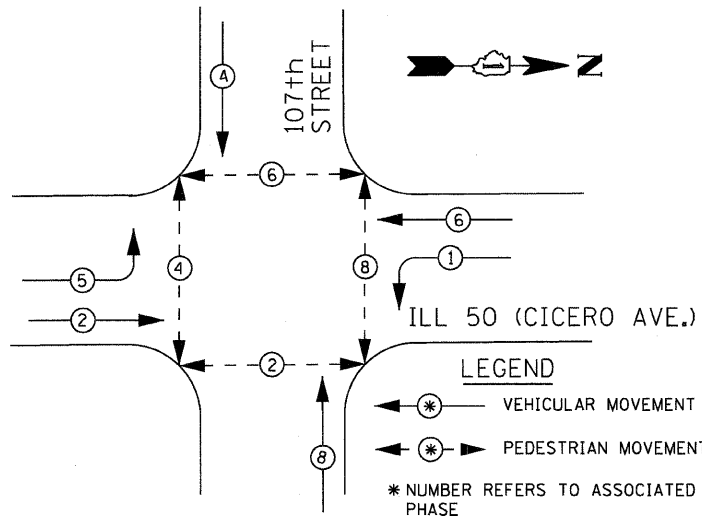
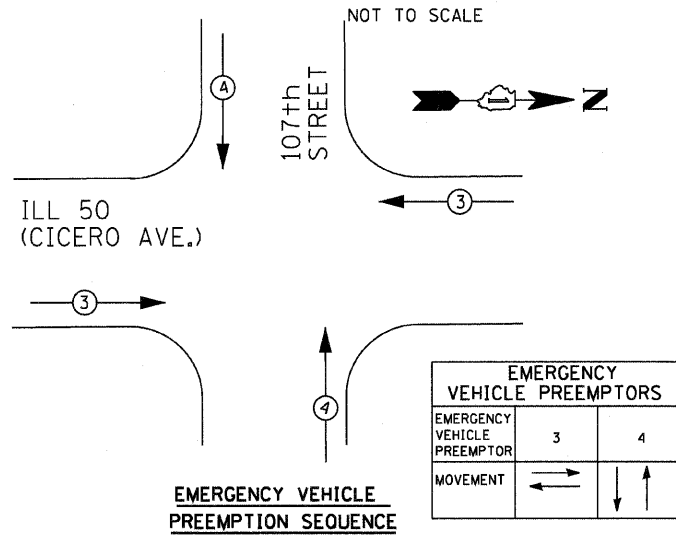


CONTROLLER SEQUENCE IV

REFERRING TO STANDARD 2393-1, THE VEHICULAR AND PEDESTRIAN PHASES USED DESIGNATED BELOW



EXISTING & PROPOSED PHASE DESIGNATION DIAGRAM

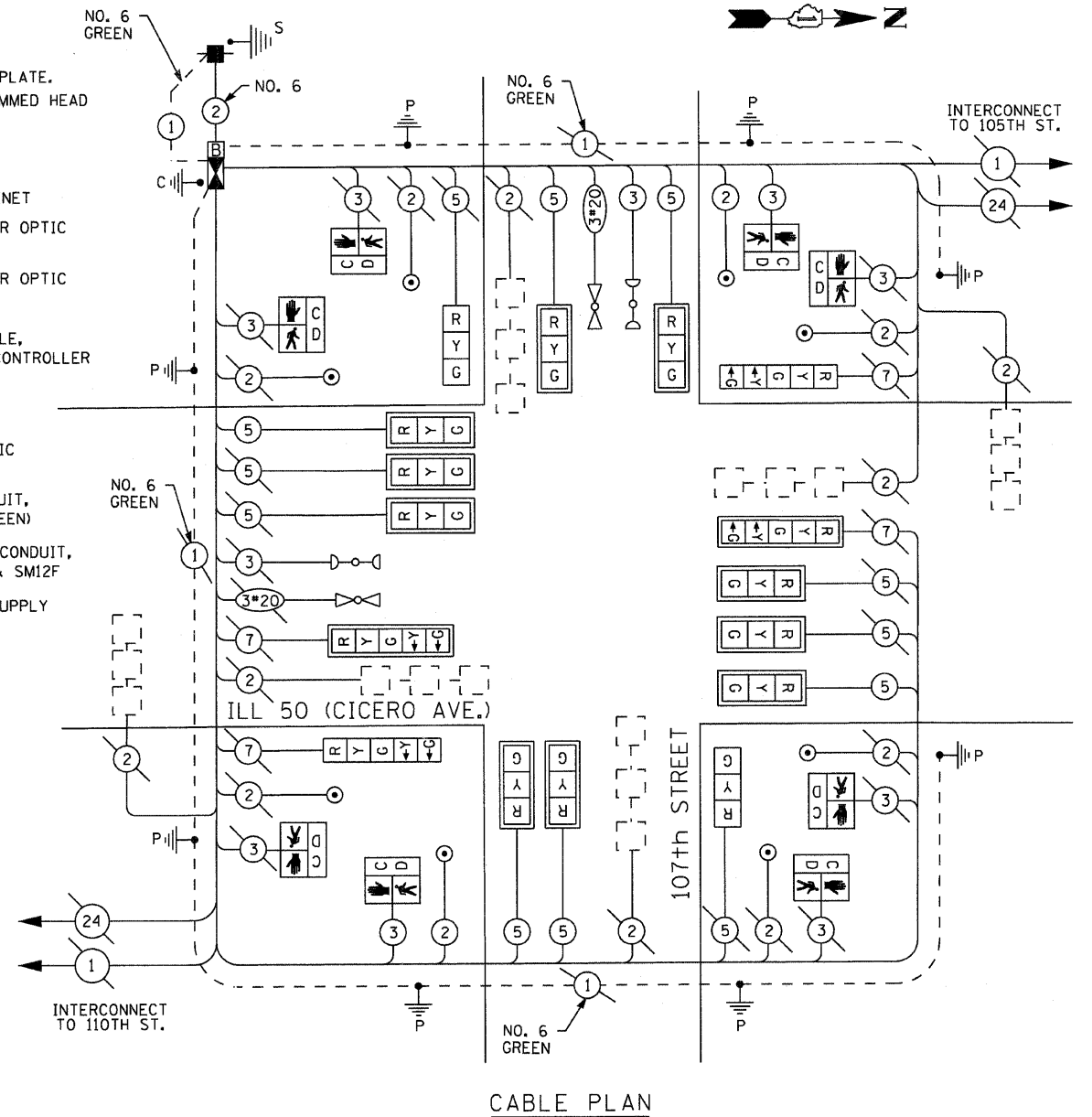


CABLE PLAN LEGEND

- | | | |
|-----------------|-----------------|---|
| EXISTING | PROPOSED | |
| | | 8" (200mm) TRAFFIC SIGNAL SECTION |
| | | 12" (300mm) TRAFFIC SIGNAL SECTION |
| | | 12" (300mm) PEDESTRIAN SIGNAL SECTION |
| | | 12" (300mm) PEDESTRIAN SIGNAL SECTION W/ COUNTDOWN TIMER |
| | | CONTROLLER CABINET |
| | | SERVICE INSTALLATION |
| | | TELEPHONE CONNECTION |
| | | MAGNETIC DETECTOR |
| | | EMERGENCY VEHICLE LIGHT DETECTOR |
| | | CONFIRMATION BEACON |
| | | PUSHBUTTON DETECTOR |
| | | VEHICLE DETECTOR, INDUCTION LOOP |
| | | ② DENOTES NUMBER OF CONDUCTORS, ALL CABLE NO. 14 EXCEPT AS INDICATED, ALL LOOP DETECTOR CABLE TO BE SHIELDED. |
-
- | | | |
|-----------------|-----------------|--|
| EXISTING | PROPOSED | |
| | | SIGNAL FACE WITH BACKPLATE, "P" INDICATES PROGRAMMED HEAD |
| | | RAILROAD CONTROL CABINET |
| | | ILLUMINATED SIGN, FIBER OPTIC "NO LEFT TURN" |
| | | ILLUMINATED SIGN, FIBER OPTIC "NO RIGHT TURN" |
| | | GROUND ROD AT HANDHOLE, DOUBLE HANDHOLE, OR CONTROLLER |
| | | GROUND ROD AT POST OR MAST ARM POLE |
| | | GROUND ROD AT ELECTRIC SERVICE INSTALLATION |
| | | GROUND CABLE IN CONDUIT, NO.6 SOLID COPPER (GREEN) |
| | | FIBER OPTIC CABLE IN CONDUIT, NO. 62.5/125 2-MM12F & SM12F |
| | | UNINTERRUPTED POWER SUPPLY |

SCHEDULE OF QUANTITIES

ITEM	UNIT	QUANTITY
MAINTENANCE OF EXISTING TRAFFIC SIGNAL INSTALLATION	EACH	1
CONDUIT IN TRENCH, 2 1/2" DIA., GALVANIZED STEEL	FOOT	17
ELECTRIC CABLE IN CONDUIT, SIGNAL NO. 14 2C	FOOT	283.5
ELECTRIC CABLE IN CONDUIT, SIGNAL NO. 14 3C	FOOT	425
ELECTRIC CABLE IN CONDUIT, SIGNAL NO. 14 5C	FOOT	1098.5
DRILL EXISTING HANDHOLE	EACH	2
STEEL MAST ARM ASSEMBLY AND POLE, 32 FT.	EACH	2
CONCRETE FOUNDATION, TYPE E	FOOT	27
SIGNAL HEAD, L.E.D., 1-FACE, 3-SECTION, BRACKET MOUNTED	EACH	2
SIGNAL HEAD, L.E.D., 1-FACE, 3-SECTION, MAST ARM MOUNTED	EACH	10
SIGNAL HEAD, L.E.D., 1-FACE, 5-SECTION, BRACKET MOUNTED	EACH	2
SIGNAL HEAD, L.E.D., 1-FACE, 5-SECTION, MAST ARM MOUNTED	EACH	2
PEDESTRIAN SIGNAL HEAD, L.E.D., 1-FACE, BRACKET MOUNTED WITH COUNTDOWN TIMER	EACH	8
TRAFFIC SIGNAL BACKPLATE, LOUVERED, ALUMINUM	EACH	12
FULLY ACTUATED CONTROLLER AND TYPE IV CABINET, SPECIAL	EACH	1
UNINTERRUPTABLE POWER SUPPLY	EACH	1
PEDESTRIAN PUSH-BUTTON	EACH	8
REMOVE EXISTING TRAFFIC SIGNAL EQUIPMENT	EACH	1
TRENCH AND BACKFILL FOR ELECTRICAL WORK	FOOT	17
MODIFY EXISTING CONTROLLER FOUNDATION	EACH	1
INDUCTIVE LOOP DETECTOR	EACH	6
SERVICE INSTALLATION, POLE MOUNT	EACH	1
ELECTRIC CABLE IN CONDUIT, GROUNDING, NO.6 1C	FOOT	79.5
ELECTRIC CABLE IN CONDUIT, NO. 6 2C	FOOT	79.5
REMOVE EXISTING CONCRETE FOUNDATION	EACH	2
ELECTRIC CABLE IN CONDUIT NO. 20 3/C, TWISTED, SHIELDED	FOOT	137.5
TRANSCEIVER - FIBER OPTIC	EACH	1



I. D. O. T. TRAFFIC SIGNAL INSTALLATION ELECTRICAL SERVICE REQUIREMENTS

TYPE	NO. LAMPS	WATTAGE		% OPERATIONS	TOTAL
		INCAND.	LED		
SIGNAL (RED)	16	135	17	0.50	136
(YELLOW)	16	135	25	0.25	100
(GREEN)	16	135	15	0.25	60
ARROW	8	135	12	0.10	9.6
PED. SIGNAL	8	90	25	1.00	200
CONTROLLER	1	100	100	100	100
ILLUM. SIGN				0.05	
FLASHER LED					
TOTAL =					605.6

ENERGY COSTS- BILLED TO: IDOT DISTRICT 1
 201 WEST CENTER COURT
 SCHAMBURG, IL 60196-1096

ENERGY SUPPLY - CONTACT MILTON RAY
 PHONE (708) 235-2315
 COMPANY COMED

FOUNDATION DEPTH	DEPTH (FT.)	CABLE SLACK (FT.)	VERTICAL (FT.)
TYPE A - POST	4	HANDHOLE	6.5
D - CONTROLLER	4	DOUBLE HANDHOLE	13
E - MAST ARM POLE		SIGNAL POST	2
24"	10	CONTROLLER CAB.	1
30"	15	FIBER OPTIC	13
		ELECTRICAL SERVICE	1
		GROUND CABLE	1
		POSTMOUNTED	6

THE TRAFFIC SIGNAL CONTROL EQUIPMENT FOR THIS PROJECT SHALL BE "ECONOLITE" TO MATCH THE EXISTING ADJACENT SYSTEM