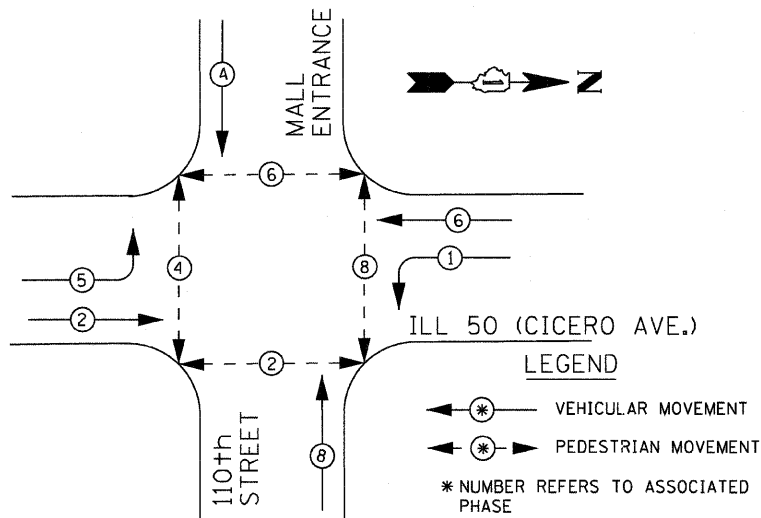
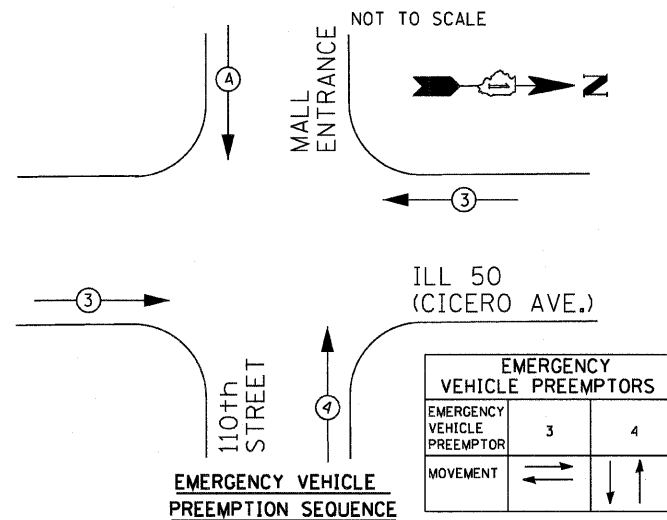


CONTROLLER SEQUENCE IV

REFERRING TO STANDARD 2393-1, THE VEHICULAR AND PEDESTRIAN PHASES USED DESIGNATED BELOW



EXISTING & PROPOSED PHASE DESIGNATION DIAGRAM

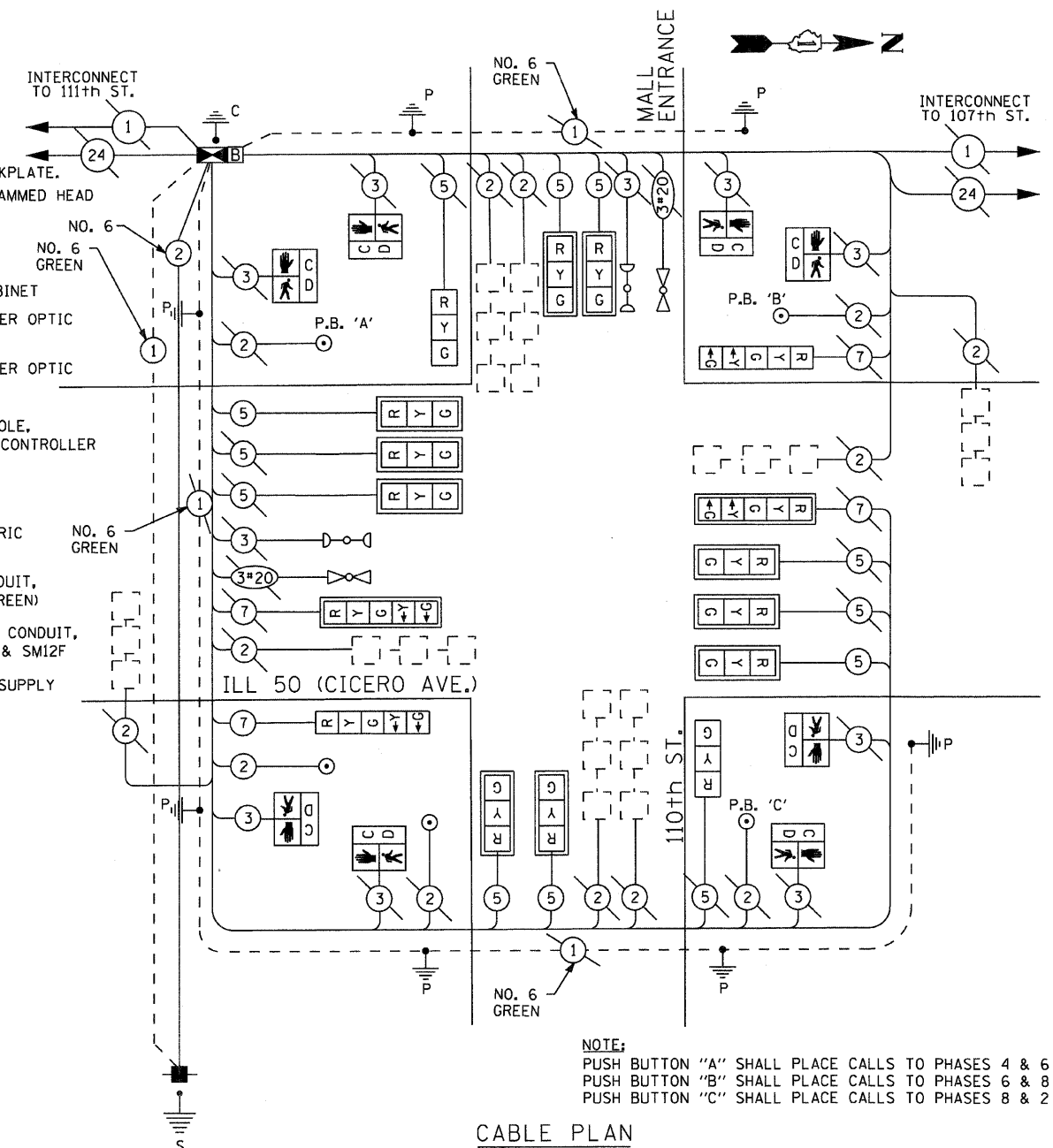


CABLE PLAN LEGEND

- | EXISTING | PROPOSED | EXISTING | PROPOSED |
|----------|----------|----------|----------|
| | | | |
| | | | |
| | | | |
| | | | |
| | | | |
| | | | |
- ② DENOTES NUMBER OF CONDUCTORS, ALL CABLE NO. 14 EXCEPT AS INDICATED. ALL LOOP DETECTOR CABLE TO BE SHIELDED.

SCHEDULE OF QUANTITIES

ITEM	UNIT	QUANTITY
MAINTENANCE OF EXISTING TRAFFIC SIGNAL INSTALLATION	EACH	1
CONDUIT IN TRENCH, 2 1/2" DIA., GALVANIZED STEEL	FOOT	23
CONDUIT PUSHED, 2 1/2" DIA., GALVANIZED STEEL	FOOT	8
ELECTRIC CABLE IN CONDUIT, SIGNAL NO. 14 2C	FOOT	164
ELECTRIC CABLE IN CONDUIT, SIGNAL NO. 14 3C	FOOT	166
ELECTRIC CABLE IN CONDUIT, SIGNAL NO. 14 5C	FOOT	1176.5
ELECTRIC CABLE IN CONDUIT, SIGNAL NO. 14 7C	FOOT	173
DRILL EXISTING HANDHOLE	EACH	2
STEEL MAST ARM ASSEMBLY AND POLE, 24 FT.	EACH	1
STEEL MAST ARM ASSEMBLY AND POLE, 36 FT.	EACH	1
CONCRETE FOUNDATION, TYPE E 36-INCH DIAMETER	FOOT	23.5
SIGNAL HEAD, L.E.D., 1-FACE, 3-SECTION, BRACKET MOUNTED	EACH	2
SIGNAL HEAD, L.E.D., 1-FACE, 3-SECTION, MAST ARM MOUNTED	EACH	10
SIGNAL HEAD, L.E.D., 1-FACE, 5-SECTION, BRACKET MOUNTED	EACH	2
SIGNAL HEAD, L.E.D., 1-FACE, 5-SECTION, MAST ARM MOUNTED	EACH	2
PEDESTRIAN SIGNAL HEAD, L.E.D., 1-FACE, BRACKET MOUNTED WITH COUNTDOWN TIMER	EACH	8
TRAFFIC SIGNAL BACKPLATE, LOUVERED, ALUMINUM	EACH	12
FULLY ACTUATED CONTROLLER AND TYPE IV CABINET, SPECIAL UNINTERRUPTABLE POWER SUPPLY	EACH	1
PEDESTRIAN PUSH-BUTTON	EACH	5
REMOVE EXISTING TRAFFIC SIGNAL EQUIPMENT	EACH	1
TRENCH AND BACKFILL FOR ELECTRICAL WORK	FOOT	23
INDUCTIVE LOOP DETECTOR	EACH	8
SERVICE INSTALLATION, POLE MOUNT	EACH	1
ELECTRIC CABLE IN CONDUIT, GROUNDING, NO.6 1C	FOOT	249
ELECTRIC CABLE IN CONDUIT, NO. 6 2C	FOOT	249
REMOVE EXISTING CONCRETE FOUNDATION	EACH	1
TRANSCEIVER - FIBER OPTIC	EACH	1



NOTE:
 PUSH BUTTON "A" SHALL PLACE CALLS TO PHASES 4 & 6
 PUSH BUTTON "B" SHALL PLACE CALLS TO PHASES 6 & 8
 PUSH BUTTON "C" SHALL PLACE CALLS TO PHASES 8 & 2

CABLE PLAN

I. D. O. T. TRAFFIC SIGNAL INSTALLATION ELECTRICAL SERVICE REQUIREMENTS

TYPE	NO. LAMPS	WATTAGE		% OPERATIONS	TOTAL
		INCAND.	LED		
SIGNAL (RED)	16	135	17	0.50	136
(YELLOW)	16	135	25	0.25	100
(GREEN)	16	135	15	0.25	60
ARROW	8	135	12	0.10	9.6
PED. SIGNAL	8	90	25	1.00	200
CONTROLLER	1	100	100	1.00	100
ILLUM. SIGN				0.05	
FLASHER LED					
TOTAL =					605.6

ENERGY COSTS- BILLED TO: IDOT DISTRICT 1
 201 WEST CENTER COURT
 SCHAMBURG, IL 60196-1096

ENERGY SUPPLY - CONTACT MILTON RAY
 PHONE (708) 235-2315
 COMPANY COMED

FOUNDATION	DEPTH	DEPTH (FT.)	CABLE SLACK (FT.)	VERTICAL (FT.)
TYPE A - POST	4		HANDHOLE 6.5	ALL FOUNDATIONS 3.5
D - CONTROLLER	4		DOUBLE HANDHOLE 13	MAST ARM (L) POLE = 20' ±L-2
E - MAST ARM POLE			SIGNAL POST 2	BRACKET MOUNTED 13
24"	10		CONTROLLER CAB. 1	PED. PUSHBUTTON 4
30"	15		FIBER OPTIC 13	ELECTRICAL SERVICE 13.5
			ELECTRICAL SERVICE 1	SERVICE TO GROUND 13.5
			GROUND CABLE 1	POSTMOUNTED 6

THE TRAFFIC SIGNAL CONTROL EQUIPMENT FOR THIS PROJECT SHALL BE "ECONOLITE" TO MATCH THE EXISTING ADJACENT SYSTEM