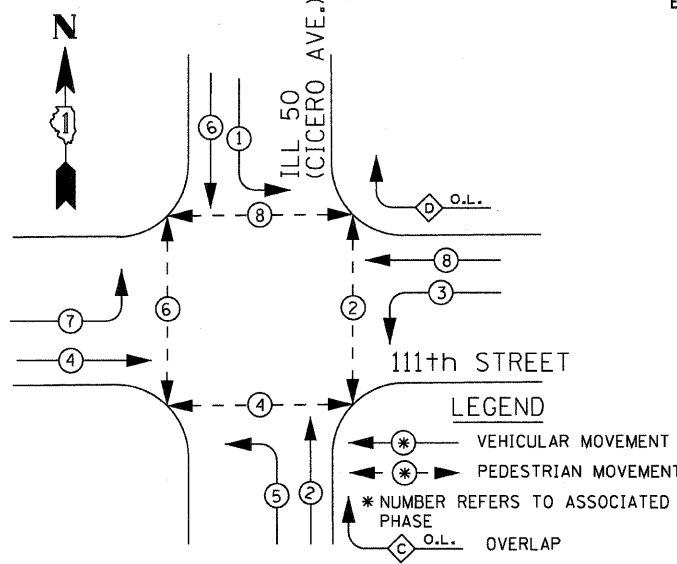


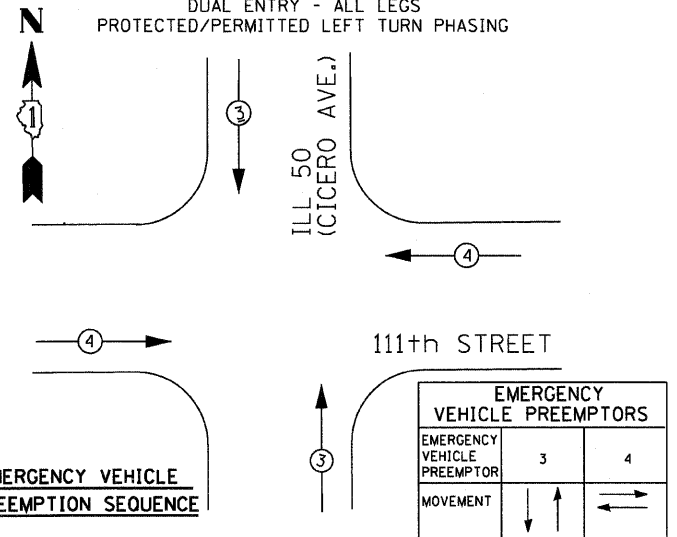
CONTROLLER SEQUENCE IV

REFERRING TO STANDARD 857001, THE VEHICULAR AND PEDESTRIAN PHASES USED DESIGNATED BELOW



EXISTING & PROPOSED PHASE DESIGNATION DIAGRAM

NOT TO SCALE
DUAL ENTRY - ALL LEGS
PROTECTED/PERMITTED LEFT TURN PHASING



I. D. O. T. TRAFFIC SIGNAL INSTALLATION ELECTRICAL SERVICE REQUIREMENTS

TYPE	NO. LAMPS	WATTAGE		% OPERATIONS	TOTAL
		INCAND.	LED		
SIGNAL (RED)	17	135	17	0.50	144.5
(YELLOW)	17	135	25	0.25	106.25
(GREEN)	17	135	15	0.25	63.75
ARROW	20	135	12	0.10	24
PED. SIGNAL	10	90	25	1.00	250
CONTROLLER	1	100	100	100	100
ILLUM. SIGN				0.05	
FLASHER LED					
TOTAL =					688.5

ENERGY COSTS- BILLED TO: IDOT DISTRICT 1
201 WEST CENTER COURT
SCHAMBURG, IL 60196-1096

ENERGY SUPPLY - CONTACT: KEN YOUNG
PHONE: (708) 235-2328
COMPANY: COMED

CABLE PLAN LEGEND

- | | | | |
|-----------------|-----------------|-----------------|-----------------|
| EXISTING | PROPOSED | EXISTING | PROPOSED |
| | | | |
| | | | |
| | | | |
| | | | |
| | | | |
| | | | |
| | | | |
| | | | |
| | | | |
| | | | |
| | | | |
| | | | |
| | | | |
- ② DENOTES NUMBER OF CONDUCTORS, ALL CABLE NO. 14 EXCEPT AS INDICATED. ALL LOOP DETECTOR CABLE TO BE SHIELDED.

RIGHT TURN OVERLAP PHASE DESIGNATION

OVERLAP LETTER	PERMISSIVE PHASE	PROTECTED PHASE
D = 8	+	1 - 8

THE YELLOW RIGHT ARROW OF THE OVERLAP SHALL BE INHIBITED DURING THE PERMISSIVE PHASE'S YELLOW INTERVAL. THE GREEN RIGHT ARROW OF THE OVERLAP SHALL BE INHIBITED DURING THE PERMISSIVE PHASE GREEN INTERVAL.

CLEARANCE NOTES FOR RIGHT TURN OVERLAPS WITH 5-SECTION RIGHT TURN SIGNAL HEAD DISPLAYS

CONTINUATION OF AN OVERLAP DURING ITS PERMISSIVE PHASE SHALL BE WITH A GREEN RIGHT ARROW DISPLAYED ALONE WHEN FOLLOWED BY THAT OVERLAP'S PROTECTED PHASE.

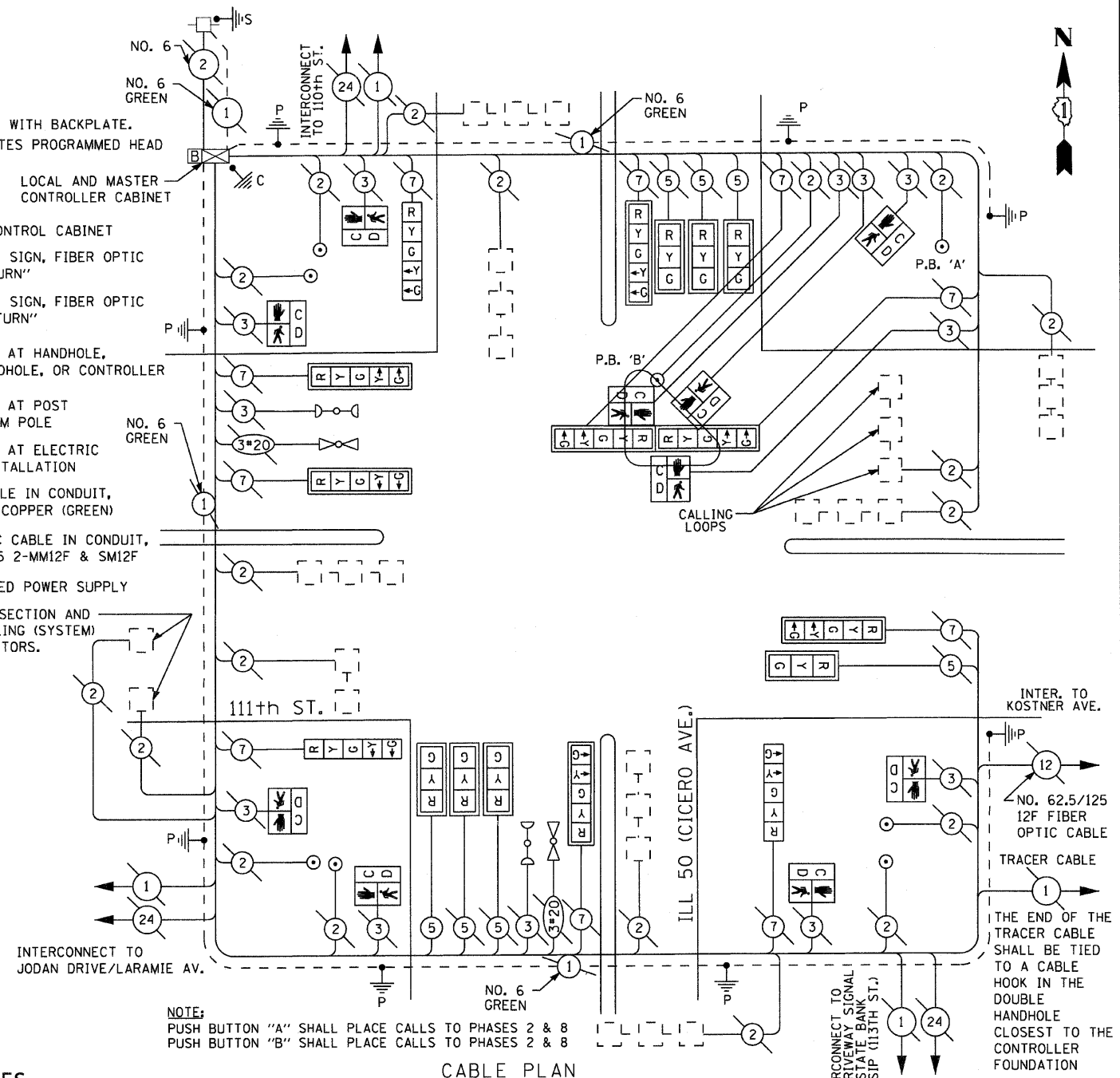
CONTINUATION OF AN OVERLAP DURING ITS PERMISSIVE PHASE SHALL BE WITH A YELLOW RIGHT ARROW DISPLAYED ALONE WHEN NOT FOLLOWED BY THAT OVERLAP'S PROTECTED PHASE.

CONTINUATION OF AN OVERLAP DURING ITS PROTECTED PHASE SHALL BE WITH A GREEN ARROW DISPLAYED ALONE WHEN FOLLOWED BY THAT OVERLAP'S PERMISSIVE PHASE.

CONTINUATION OF AN OVERLAP DURING ITS PROTECTED PHASE SHALL BE WITH A YELLOW RIGHT ARROW DISPLAYED ALONE WHEN NOT FOLLOWED BY THAT OVERLAP'S PERMISSIVE PHASE.

SCHEDULE OF QUANTITIES

ITEM	UNIT	QUANTITY
MAINTENANCE OF EXISTING TRAFFIC SIGNAL INSTALLATION	EACH	1
SIGNAL HEAD, L.E.D., 1-FACE, 3-SECTION, MAST ARM MOUNTED	EACH	7
SIGNAL HEAD, L.E.D., 1-FACE, 5-SECTION, BRACKET MOUNTED	EACH	5
SIGNAL HEAD, L.E.D., 1-FACE, 5-SECTION, MAST ARM MOUNTED	EACH	5
PEDESTRIAN SIGNAL HEAD, L.E.D., 1-FACE, BRACKET MOUNTED W/COUNTDOWN TIMER	EACH	10
TRAFFIC SIGNAL BACKPLATE, LOUVERED, ALUMINUM	EACH	14
PEDESTRIAN PUSH-BUTTON	EACH	8
REMOVE EXISTING TRAFFIC SIGNAL EQUIPMENT	EACH	1
UNINTERRUPTABLE POWER SUPPLY	EACH	1
TEMPORARY INFORMATION SIGNING	SO FT	40
ELECTRIC CABLE IN CONDUIT, SIGNAL NO. 14	FOOT	481



REMOVAL OF EXISTING TRAFFIC SIGNAL EQUIPMENT

THE FOLLOWING ITEMS SHALL BE REMOVED BY THE CONTRACTOR AND SHALL BE DISPOSED OF BY THEM OUTSIDE THE RIGHT-OF-WAY AT THEIR EXPENSE. THE SALVAGE VALUE OF THE REMOVED EQUIPMENT SHALL BE REFLECTED IN THE CONTRACT BID PRICE.

5	EACH	SIGNAL HEAD, 1 - FACE, 3 - SECTION
10	EACH	SIGNAL HEAD, 1 - FACE, 5 - SECTION
10	EACH	TRAFFIC SIGNAL BACKPLATE
10	EACH	PEDESTRIAN SIGNAL HEAD, 1-FACE
8	EACH	PEDESTRIAN PUSHBUTTON