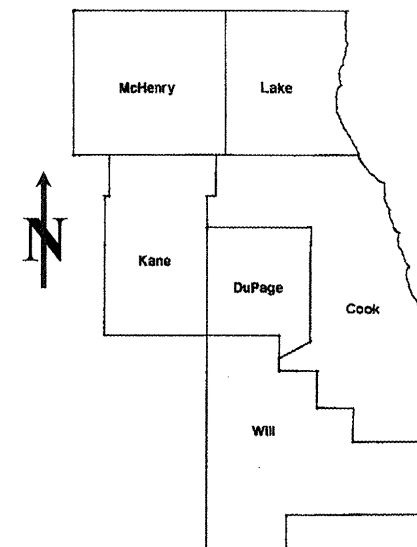


ROUTE	SECTION	COUNTY	TOTAL SHEETS	SHEET NUMBER
VARIOUS	2009-025 PP	COOK	49	1

STATE OF ILLINOIS
DEPARTMENT OF TRANSPORTATION
DIVISION OF HIGHWAYS
DISTRICT ONE
PROPOSED HIGHWAY PLANS

CONTRACT NO. 60G24

D-91-355-09



LOCATION OF IMPROVEMENT INDICATED THUS:

FOR INDEX OF SHEETS SEE SHEET 2

VARIOUS ROUTES
 SECTION: 2009-025 PP
 VARIOUS LOCATIONS IN CENTRAL COOK COUNTY
 INTERMITTENT PAVEMENT RESURFACING
 PROJECT: ESP-000S (650)
 COOK COUNTY
 C-91-355-09

DISTRICT ONE - DESIGN - PLAN PREPARATION ENGINEER:
 KEN ENG / (847) 705-4247

CONTRACT NO. 60G24

STATE OF ILLINOIS
DEPARTMENT OF TRANSPORTATION
DIVISION OF HIGHWAYS

SUBMITTED: FEBRUARY 5, 2009

Diana M. O'Keefe
DEPUTY DIRECTOR OF HIGHWAYS, REGION ENGINEER

March 27, 2009

Charles J. Ingersoll
ENGINEER OF DESIGN AND ENVIRONMENT

March 27, 2009

Christine M. Reed
DIRECTOR, DIVISION OF HIGHWAYS

PRINTED BY THE AUTHORITY
OF THE STATE OF ILLINOIS

J.U.L.I.E.: JOINT UTILITY LOCATION
INFORMATION FOR EXCAVATION
(312) 744-7000

INDEX OF SHEETS

<u>SHEET NO.</u>	<u>DESCRIPTION</u>
1	TITLE SHEET
2	INDEX OF SHEETS, STATE STANDARDS AND GENERAL NOTES
3	SUMMARY OF QUANTITIES
4	GENERAL LOCATION MAP
5	SUMMARY OF PATCHING SCHEDULE
6-41	PATCHING SCHEDULE
42	BUTT JOINT AND HMA TAPER DETAILS
43	TRAFFIC CONTROL AND PROTECTION FOR SIDE ROADS, INTERSECTIONS AND DRIVEWAYS
44	TYPICAL APPLICATIONS: RAISED REFLECTIVE PAVEMENT MARKERS (SNOW-PLOW RESISTANT)
45	DISTRICT ONE TYPICAL PAVEMENT MARKINGS
46	TRAFFIC CONTROL AND PROTECTION OF TURN BAYS (TO REMAIN OPEN TO TRAFFIC)
47	ARTERIAL ROAD INFORMATION SIGN
48	STANDARD TRAFFIC SIGNAL DESIGN DETAILS
49	DETECTOR LOOP INSTALLATION DETAIL FOR ROADWAY RESURFACING

STATE STANDARDS

<u>STANDARD NO.</u>	<u>DESCRIPTION</u>
000001-05	TYPICAL SYMBOLS, ABBREVIATIONS AND PATTERNS
701201-03	LANE CLOSURE, 2L, 2W, DAY ONLY
701301-03	LANE CLOSURE, 2L, 2W, SHORT TIME OPERATIONS
701306-02	LANE CLOSURE, 2L, 2W, SLOW MOVING OPERATIONS - DAY ONLY
701336-05	LANE CLOSURE, 2L, 2W, WORK AREAS IN SERIES
701501-05	URBAN LANE CLOSURE, 2L, 2W, UNDIVIDED
701601-03	URBAN LANE CLOSURE, MULTILANE, 1W OR 2W WITH NONTRAVERSABLE MEDIAN
701606-06	URBAN LANE CLOSURE, MULTILANE, 2W WITH MOUNTABLE MEDIAN
701701-06	URBAN LANE CLOSURE, MULTILANE INTERSECTION
701901-01	TRAFFIC CONTROL DEVICES

GENERAL NOTES

BEFORE STARTING ANY EXCAVATION, THE CONTRACTOR SHALL CALL "JULIE" AT (800) 892-0123 OR 811 FOR FIELD LOCATIONS OF BURIED ELECTRIC, TELEPHONE AND GAS FACILITIES. (48 HOUR NOTIFICATION REQUIRED)

THE CONTRACTOR WILL NOT BE ALLOWED TO SET UP A YARD OR FIELD OFFICE ON STATE (OR TOLLWAY) PROPERTY WITHOUT WRITTEN PERMISSION FROM THE DEPARTMENT (OR ISTHA)

WHEN ARTIFICIAL LIGHTING IS UTILIZED IN NIGHT OPERATIONS, THE CONTRACTOR SHALL EXERCISE THE UTMOST PRECAUTIONS IN PREVENTING ADVERSE VISIBILITY TO THE MOTORING PUBLIC AND ADJOINING RESIDENTIAL AREAS.

ANY PAVEMENT MARKINGS AND RAISED REFLECTIVE PAVEMENT MARKERS OBLITERATED BY MILLING AND RESURFACING OPERATIONS ON SIDE STREETS AND ENTRANCES SHALL BE REPLACED AND PAID FOR IN KIND.

BEFORE BEGINNING ANY WORK, THE CONTRACTOR SHALL RETAIN AND RECORD FOR FUTURE REFERENCE, ALL EXISTING PAVEMENT MARKING LINES (AND RAISED REFLECTIVE PAVEMENT MARKERS) IN ORDER THAT THESE LOCATIONS CAN BE RE-ESTABLISHED FOR STRIPING. EXACT LOCATIONS OF ALL PAVEMENT MARKINGS SHALL BE AS DIRECTED BY THE ENGINEER.

ALL PAVEMENT PATCHING LOCATIONS WILL BE DETERMINED IN THE FIELD BY THE ENGINEER.

THE CONTRACTOR SHALL CONTACT THE DISTRICT ONE TRAFFIC CONTROL SUPERVISOR AT (847) 705-4470 A MINIMUM OF 72 HOURS IN ADVANCE OF BEGINNING WORK.

THE ENGINEER SHALL CONTACT MS. PATRICE HARRIS, AREA TRAFFIC FIELD ENGINEER AT (708) 597-8900 MINIMUM OF TWO (2) WEEKS PRIOR TO PLACEMENT OF PERMANENT PAVEMENT MARKINGS.

DOUBLE LANE MARKERS ARE TO BE USED AS SHOWN ON THE DISTRICT ONE DETAIL "TYPICAL APPLICATIONS - RAISED REFLECTIVE PAVEMENT MARKERS (SNOW-PLOW RESISTANT)" SHOWN IN THE PLANS.

THE EXISTING ROADWAY TYPICAL SECTION IS ASSUMED TO HAVE A 3 INCH HOT-MIX ASPHALT OVERLAY ON TOP OF A TEN INCH CONCRETE BASE.

ALL PAVEMENT PATCHES SHOWN IN THE PLANS ARE TWO (2) INCH MILL AND RESURFACE ONLY. THE MINIMUM WIDTH FOR MILLING AND PATCHING SHALL BE TWO (2) FEET.

THE COST OF TRAFFIC CONTROL AND PROTECTION FOR THE PROJECT SHALL BE INCLUDED IN THE COST OF THE ASSOCIATED ROAD WORK.

THE COST OF ANY PARTIAL OR FULL DEPTH PATCHING REQUIRED AFTER THE REMOVAL OF THE EXISTING 2 INCH HOT-MIX ASPHALT SURFACE SHALL BE PAID FOR IN ACCORDANCE WITH ARTICLE 109.04 OF THE STANDARD SPECIFICATIONS.

HOT-MIX ASPHALT MIXTURE REQUIREMENTS

MIXTURE TYPE	AC TYPE	AIR VOIDS (%)
HOT-MIX ASPHALT SURFACE COURSE, MIX "D", N70 (IL 9.5MM), 2"	PG 64-22	4% @ 70 CYR

THE UNIT WEIGHT USED TO CALCULATE ALL HOT-MIX ASPHALT SURFACE MIXTURE QUANTITIES IS 112 LBS/SY/IN.

F.A. RTE.	SECTION	COUNTY	TOTAL SHEETS	SHEET NO.
VAR.	2009-025 PP	COOK	49	3
FED. ROAD DIST. NO. 1		ILLINOIS	HIGHWAY PROJECT	
CONTRACT NO. 60G24				

SUMMARY OF QUANTITIES			TOTAL QUANTITIES	URBAN 100% FED 1000-2A	CONSTRUCTION TYPE CODE				
CODE NO	ITEM	UNIT							
40600200	BITUMINOUS MATERIALS (PRIME COAT)	TON	44	44					
40600300	AGGREGATE (PRIME COAT)	TON	219	219					
40600400	MIXTURE FOR CRACKS, JOINTS, AND FLANGEWAYS	TON	328	328					
40600982	HOT-MIX ASPHALT SURFACE REMOVAL - BUTT JOINT	SO YD	4368	4368					
40603340	HOT-MIX ASPHALT SURFACE COURSE, MIX "D", N70	TON	12229	12229					
44000157	HOT-MIX ASPHALT SURFACE REMOVAL, 2"	SO YD	109179	109179					
67000400	ENGINEER'S FIELD OFFICE, TYPE A	CAL MO	6	6					
67100100	MOBILIZATION	L SUM	1	1					
70300100	SHORT-TERM PAVEMENT MARKING	FOOT	29873	29873					
70301000	WORK ZONE PAVEMENT MARKING REMOVAL	SO FT	9958	9958					
*78000100	THERMOPLASTIC PAVEMENT MARKING - LETTERS AND SYMBOLS	SO FT	350	350					
*78000200	THERMOPLASTIC PAVEMENT MARKING - LINE 4"	FOOT	164300	164300					
*78000400	THERMOPLASTIC PAVEMENT MARKING - LINE 6"	FOOT	2400	2400					
*78000600	THERMOPLASTIC PAVEMENT MARKING - LINE 12"	FOOT	500	500					
*78000650	THERMOPLASTIC PAVEMENT MARKING - LINE 24"	FOOT	400	400					
*78100100	RAISED REFLECTIVE PAVEMENT MARKER	EACH	2500	2500					
78300200	RAISED REFLECTIVE PAVEMENT MARKER REMOVAL	EACH	2500	2500					
*88600600	DETECTOR LOOP REPLACEMENT	FOOT	2000	2000					
X0322256	TEMPORARY INFORMATION SIGNING	SO FT	1954	1954					
© Z0076600	TRAINEE'S	HOUR	1500	1500					

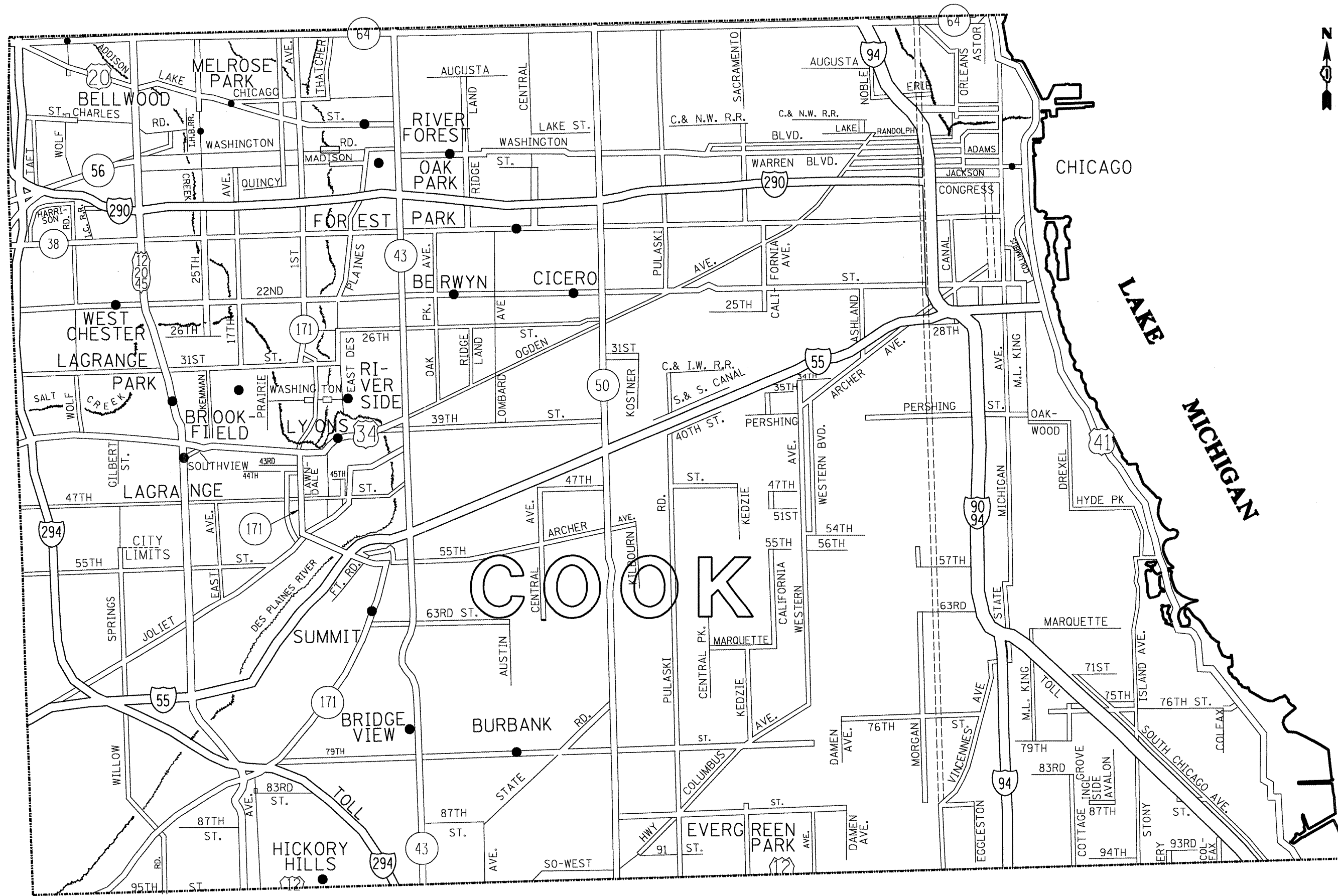
SUMMARY OF QUANTITIES			TOTAL QUANTITIES	CONSTRUCTION TYPE CODE					
CODE NO	ITEM	UNIT							

* SPECIALTY ITEMS
© Y080

REVISIONS	
NAME	DATE

ILLINOIS DEPARTMENT OF TRANSPORTATION
SUMMARY OF QUANTITIES

PLOT DATE: 2/9/2009



FILE NAME =
 c:\pw_work\p\1001\SMITHK\0125891\Design.dgn

USER NAME = smthkl
 PLOT SCALE = 100.0000' / IN.
 PLOT DATE = 2/9/2009

DESIGNED -
 DRAWN -
 CHECKED -
 DATE -

REVISED -
 REVISED -
 REVISED -
 REVISED -

**STATE OF ILLINOIS
 DEPARTMENT OF TRANSPORTATION**

GENERAL LOCATION MAP - CENTRAL COOK COUNTY

SCALE: SHEET NO. OF SHEETS STA. TO STA.

F.A. RTE. VAR.	SECTION	COUNTY	TOTAL SHEETS	SHEET NO.
	2009-025 PP	COOK	49	4
CONTRACT NO. 60C24				
FED. ROAD DIST. NO. 1 [ILLINOIS] FED. AID PROJECT				

SUMMARY - CENTRAL COOK COUNTY	HMA 2" MILL & RESURFACE (SY)
17TH AVE. (CERMAK RD. TO I-290)	1168
39TH ST. (CENTRAL AVE. TO CICERO AVE.)	660
47TH ST. (CENTRAL AVE. TO CICERO AVE.)	1430
55TH ST. (IL 171 TO HARLEM AVE.)	345
63RD ST. (IL 171 TO HARLEM AVE.)	1285
ADDISON ST. (OAK PARK AVE. TO CICERO AVE.)	1389
CERMAK RD. (CICERO AVE. TO BELT LINE RR)	3160
CERMAK RD. (HARLEM AVE. TO WOLF RD.)	20849
CERMAK RD. FRONTAGE RD. (GARDNER RD. TO NORTH/SOUTH SIDES OF BRIDGE)	468
CICERO AVE. (GRAND AVE. TO NORTH AVE.)	1127
FULLERTON AVE. (MANHEIM RD. TO 25TH AVE.)	5410
IRVING PARK RD. (CUMBERLAND AVE. TO RIVER RD.)	3639
BELMONT AVE. - EASTBOUND (25TH AVE. TO HARLEM AVE.)	1007
IL 56 (BUTTERFIELD RD. (MANHEIM RD. TO COOK/DUPAGE COUNTY LINE)	2739
LONG ARM RAMP (SB LAGRANGE TO EB 79TH AVE.)	853
LONG ARM RAMP (WB ARCHER AVE. TO NB LAGRANGE RD.)	432
CUMBERLAND AVE. (BELMONT AVE. TO FOREST PRESERVE)	637
HARLEM AVE. (IRVING PARK RD. TO NORTH AVE.)	1589
NARRAGANSETT AVE. (ADDISON ST. TO NORTH AVE.)	10562
NORTH AVE. (HARLEM AVE. TO THATCHER AVE.)	581
OGDEN AVE. (HARLEM AVE. TO CICERO AVE.)	1192
ROOSEVELT RD. - FRONTAGE RD. (25TH AVE. TO NORTH/SOUTH SIDE OF BRIDGE)	453
ROOSEVELT RD. (MANHEIM RD. TO CICERO AVE.)	5121
CICERO AVE. (31ST ST. TO 87TH ST.)	2512
HARLEM AVE. (NORTH AVE. TO LAKE ST.)	898
HARLEM AVE. (OGDEN AVE. TO 87TH ST.)	4110
STATE RD. (79TH ST. TO CICERO AVE.)	947
TAFT AVE. (BUTTERFIELD RD. TO ST. CHARLES RD.)	1540
US 45/LAGRANGE RD. (CERMAK AVE. TO BREWSTER AVE.)	1797
BELMONT - WESTBOUND (FOREST PRESERVE TO RIVER RD.)	599
NORTH AVE - WESTBOUND (5TH AVE. TO I-290)	3569
WILLOW SPRINGS RD. (IL 171 TO CORCORAN RD.)	959
79TH ST. (CICERO AVE. TO IL 171/ARCHER AVE.)	9856
LAWRENCE AVE. (EAST RIVER RD. TO 0.1 MILE W/O RIVER RD.)	1120
LAKE ST. (9TH AVE. TO MANNHEIM RD.)	3614
MANNHEIM RD. (BELMONT AVE. TO ARCHER AVE.)	6160
CICERO AVE. (ARMITAGE AVE. TO ADDISON ST.)	3550
IL 171/ARCHER AVE. (55TH ST. TO WILLOW SPRINGS RD.)	1852
SUMMARY TOTALS:	109179
	SY

FILE NAME =
 c:\pw_work\p\WIDOT\SMITHKL\d0125091\Desig

USER NAME = smthkl
 PLOT SCALE = 100.0000' / IN.
 PLOT DATE = 2/9/2009

DESIGNED -	REVISED -
DRAWN -	REVISED -
CHECKED -	REVISED -
DATE -	REVISED -

**STATE OF ILLINOIS
 DEPARTMENT OF TRANSPORTATION**

**SUMMARY OF PATCHING SCHEDULE
 CENTRAL COOK COUNTY**

SCALE: SHEET NO. OF SHEETS STA. TO STA.

F.A. RTE.	SECTION	COUNTY	TOTAL SHEETS	SHEET NO.
VAR.	2009-025 PP	COOK	49	5
CONTRACT NO. 60G24				
FED. ROAD DIST. NO. ILLINOIS FED. AID PROJECT				

ROUTE: 17th Ave from Cermak to I-290

CROSS STREETS		DIRECTION (EB/WB) (NB/SB)	LANE NO. (1, 2, 3)	PAVEMENT PATCH WIDTH	PAVEMENT PATCH LENGTH	REPAIR AREA (SQ FT)	REPAIR AREA (SQ YD)
FROM	TO						
Cermak	I-290	SB	1,2	22	30	660	73
			2	11	25	275	31
			1	11	25	275	31
			2	11	15	165	18
			1	11	75	825	92
Lexington			1	11	40	440	49
			1	11	40	440	49
Harvard			2	11	35	385	43
			1,2	22	25	550	61
Roosevelt			2	11	100	1100	122
			1	11	45	495	55
13th			2	11	15	165	18
14th			1,2	22	40	880	98
			1	11	35	385	43
		NB					
Central			1,2	20	70	1400	156
			2	11	15	165	18
			2	11	50	550	61
14th Street			2	11	20	220	24
13th			2	11	15	165	18
Roosevelt Rd			2	11	12	132	15
			1,2	22	10	220	24
			2	11	15	165	18
Harvard			2	11	12	132	15
			2	11	15	165	18
Bataan Drive			2	11	15	165	18
			1,2	20	30	600	67

TOTALS: 769 FT 1168 SY

ROUTE: 39th Street from Central Ave to Cicero Ave

CROSS STREETS		DIRECTION (EB/WB) (NB/SB)	LANE NO. (1, 2, 3)	PAVEMENT PATCH WIDTH	PAVEMENT PATCH LENGTH	REPAIR AREA (SQ FT)	REPAIR AREA (SQ YD)
FROM	TO						
Central	Cicero	EB	1,2	22	75	1650	183
			2	11	25	275	31
			2	11	30	330	37
Laramie	Concrete		2	11	45	495	55
			3	11	25	275	31
		WB	1,2	22	15	330	37
Laramie	Concrete		3	11	10	110	12
			1,2	22	20	440	49
			1,2	22	15	330	37
			2	11	75	825	92
Central			1	11	60	660	73
			1,2	22	10	220	24

TOTALS: 405 FT 660 SY

ROUTE: 47th Street Central to Cicero Ave

CROSS STREETS		DIRECTION (EB/WB) (NB/SB)	LANE NO. (1, 2, 3)	PAVEMENT PATCH WIDTH	PAVEMENT PATCH LENGTH	REPAIR AREA (SQ FT)	REPAIR AREA (SQ YD)
FROM	TO						
Cicero Ave	Central Ave	WB					
Lacrose			1,2	11	20	220	24
			1	11	80	880	98
Laverne			1	11	25	275	31
Leclaire			1,2	22	20	440	49
Leamington			1	11	35	385	43
Long			2	11	100	1100	122
			2	11	120	1320	147
				11			
				11			
				11			
				11			
				11			
		EB					
			2	11	100	1100	122
Central							
Lorel			2	11	75	825	92
			2	11	120	1320	147
Leamington			2	11	80	880	98
Leverne			1,2	22	125	2750	306
Lamon			2	11	125	1375	153

TOTALS: 1025 FT 1430 SY

ROUTE: 55th St. (IL-171 to Harlem Ave.)

CROSS STREETS		DIRECTION (EB/WB) (NB/SB)	LANE NO. (1, 2, 3)	PAVEMENT PATCH WIDTH	PAVEMENT PATCH LENGTH	REPAIR AREA (SQ FT)	REPAIR AREA (SQ YD)
FROM	TO						
IL 171	Harlem	EB	1	12	50	600	67
			1,2	2	25	50	6
Harlem	IL 171	WB	1	2	200	400	44
			2	2	200	400	44
			1	12	75	900	100
			1,2	2	100	200	22
			1,2	2	100	200	22
			1	12	50	180	20
			2	12	50	180	20

TOTALS: 850 FT 345 SY

ROUTE: 63rd St. EB & WB (IL 171 to Harlem Ave.)

CROSS STREETS		DIRECTION (EB/WB) (NB/SB)	LANE NO. (1, 2, 3)	PAVEMENT PATCH WIDTH	PAVEMENT PATCH LENGTH	REPAIR AREA (SQ FT)	REPAIR AREA (SQ YD)
FROM	TO						
Harlem	IL 171	WB	1	12	25	300	33
			2	12	25	300	33
			1	12	25	300	33
			2	12	25	300	33
			1	12	50	600	67
			2	12	50	600	67
			2	12	25	300	33
IL 171	Harlem	EB	1	12	50	600	67
			1	12	25	300	33
			2	12	50	600	67
			1	12	150	1800	200
			2	12	150	1800	200
			1	12	100	1200	133
			2	12	100	1200	133
			Turn In	12	100	1200	133

TOTALS: 965 FT 1285 SY

ROUTE: Cermak-EB & WB (Cicero Ave. to Belt Line RR)

CROSS STREETS		DIRECTION (EB/WB) (NB/SB)	LANE NO. (1, 2, 3)	PAVEMENT PATCH WIDTH	PAVEMENT PATCH LENGTH	REPAIR AREA (SQ FT)	REPAIR AREA (SQ YD)
FROM	TO						
Cicero	RailRoad Bridge	EB	1	12	10	120	13
Cicero	RailRoad Bridge	EB	2	12	5	60	7
Cicero	RailRoad Bridge	EB	1	12	10	120	13
Cicero	RailRoad Bridge	EB	1	12	10	120	13
Cicero	RailRoad Bridge	EB	3	12	100	1200	133
Cicero	RailRoad Bridge	EB	1,2	2	50	100	11
Cicero	RailRoad Bridge	EB	2,3	2	100	200	22
Cicero	RailRoad Bridge	EB	LTB,1	2	80	160	18
Cicero	RailRoad Bridge	EB	1	12	10	120	13
Cicero	RailRoad Bridge	EB	3	12	10	120	13
Cicero	RailRoad Bridge	EB	1	12	10	120	13
Cicero	RailRoad Bridge	EB	2	12	100	1200	133
Cicero	RailRoad Bridge	EB	3	12	10	120	13
Cicero	RailRoad Bridge	EB	1	12	50	600	67
Cicero	RailRoad Bridge	EB	3	12	100	1200	133
Cicero	RailRoad Bridge	EB	1,2	2	100	200	22
Cicero	RailRoad Bridge	EB	1	12	50	600	67
Cicero	RailRoad Bridge	EB	2	12	20	240	27
Cicero	RailRoad Bridge	EB	3	12	20	240	27
Cicero	RailRoad Bridge	EB	1	12	20	240	27
Cicero	RailRoad Bridge	EB	2	12	40	480	53
Cicero	RailRoad Bridge	EB	1	12	100	1200	133
Cicero	RailRoad Bridge	EB	2	12	50	600	67
RailRoadBridge	Cicero Ave	WB	1	12	20	240	27
RailRoadBridge	Cicero Ave	WB	2	12	40	480	53
RailRoadBridge	Cicero Ave	WB	1	12	100	1200	133
RailRoadBridge	Cicero Ave	WB	2	12	100	1200	133
RailRoadBridge	Cicero Ave	WB	3	12	100	1200	133
RailRoadBridge	Cicero Ave	WB	1	12	250	3000	333
RailRoadBridge	Cicero Ave	WB	TB	12	200	2400	267
RailRoadBridge	Cicero Ave	WB	2	12	100	1200	133
RailRoadBridge	Cicero Ave	WB	1	12	100	1200	133
RailRoadBridge	Cicero Ave	WB	2	12	200	2400	267
RailRoadBridge	Cicero Ave	WB	1	12	60	720	80
RailRoadBridge	Cicero Ave	WB	1	12	80	960	107
RailRoadBridge	Cicero Ave	WB	2	12	80	960	107
RailRoadBridge	Cicero Ave	WB	1	12	80	960	107
RailRoadBridge	Cicero Ave	WB	2	12	80	960	107

TOTALS: 2645 FT 3160 SY

ROUTE: Cermak EB & WB (Harlem Ave. to Wolf Rd.)

FROM	CROSS STREETS TO	DIRECTION (EB/WB) (NB/SB)	LANE NO. (1, 2, 3)	PAVEMENT PATCH WIDTH	PAVEMENT PATCH LENGTH	REPAIR AREA (SQ FT)	REPAIR AREA (SQ YD)
"1st Ave"	Desplains	EB	3	12	20	240	27
"1st Ave"	Desplains	EB	1	12	60	720	80
Desplains	Harlem	EB	2	12	60	720	80
Desplains	Harlem	EB	2	12	20	240	27
Desplains	Harlem	EB	1,2	2	200	400	44
Desplains	Harlem	EB	2	12	200	2400	267
Desplains	Harlem	EB	1,2	2	200	400	44
Desplains	Harlem	EB	2	12	400	4800	533
Desplains	Harlem	EB	1	12	200	2400	267
Desplains	Harlem	EB	1,2	2	400	800	89
Desplains	Harlem	EB	1	12	200	2400	267
Desplains	Harlem	EB	2	12	160	1920	213
Desplains	Harlem	EB	1	12	120	1440	160
Desplains	Harlem	EB	2	12	20	240	27
Desplains	Harlem	EB	2	12	200	2400	267
Desplains	Harlem	EB	1	12	20	240	27
Desplains	Harlem	EB	1	12	20	240	27
Desplains	Harlem	EB	2	12	20	240	27
Desplains	Harlem	EB	2,S	2	60	120	13
Desplains	Harlem	EB	2	12	20	240	27
Desplains	Harlem	EB	1	12	20	240	27
Desplains	Harlem	EB	1	12	80	960	107
Desplains	Harlem	EB	2	12	80	960	107
Desplains	Harlem	EB	2	12	40	480	53
Desplains	Harlem	EB	2	12	40	480	53
Desplains	Harlem	EB	2	12	60	720	80
Desplains	Harlem	EB	1	12	20	240	27
Desplains	Harlem	EB	2	12	40	480	53
Desplains	Harlem	EB	2	12	20	240	27
Desplains	Harlem	EB	1,2	2	400	800	89
Desplains	Harlem	EB	1	12	40	480	53
Desplains	Harlem	EB	1,2	2	160	320	36
Desplains	Harlem	EB	3	12	120	1440	160
Desplains	Harlem	EB	1,2	2	160	320	36
Desplains	Harlem	EB	2,3	2	120	240	27
Desplains	Harlem	EB	1	12	40	480	53
Desplains	Harlem	EB	2	12	40	480	53
Desplains	Harlem	EB	3	12	40	480	53
Desplains	Harlem	EB	3	12	80	960	107
Desplains	Harlem	EB	3,S	2	100	200	22
Desplains	Harlem	EB	3	12	10	120	13
Desplains	Harlem	EB	1	12	80	960	107
Desplains	Harlem	EB	2	12	80	960	107
Desplains	Harlem	EB	3	12	80	960	107
Desplains	Harlem	EB	1	12	100	1200	133
Desplains	Harlem	EB	2	12	10	120	13
Desplains	Harlem	EB	3	12	60	720	80
Desplains	Harlem	EB	1	12	160	1920	213
Desplains	Harlem	EB	1	12	160	1920	213
Desplains	Harlem	EB	2	12	20	240	27
Desplains	Harlem	EB	1	12	60	720	80
Desplains	Harlem	EB	2	12	60	720	80
Desplains	Harlem	EB	3	12	60	720	80
Desplains	Harlem	EB	1	12	160	1920	213
Desplains	Harlem	EB	2	12	80	960	107
Desplains	Harlem	EB	3	12	80	960	107
Desplains	Harlem	EB	2	12	20	240	27
Desplains	Harlem	EB	2	12	20	240	27
Desplains	Harlem	EB	1	12	40	480	53
Desplains	Harlem	EB	LTB	12	10	120	13
Harlem	Desplains Ave	WB	1	12	10	120	13
Harlem	Desplains Ave	WB	2	12	10	120	13
Harlem	Desplains Ave	WB	2	12	40	480	53
Harlem	Desplains Ave	WB	1	12	40	480	53
Harlem	Desplains Ave	WB	1	12	40	480	53
Harlem	Desplains Ave	WB	2	12	40	480	53
Harlem	Desplains Ave	WB	1	12	50	600	67
Harlem	Desplains Ave	WB	1	12	50	600	67
Harlem	Desplains Ave	WB	2	12	10	120	13
Harlem	Desplains Ave	WB	1,2	2	40	80	9
Harlem	Desplains Ave	WB	1	12	30	360	40
Harlem	Desplains Ave	WB	1	12	40	480	53
Harlem	Desplains Ave	WB	1	12	40	480	53
Harlem	Desplains Ave	WB	1	12	10	120	13
Harlem	Desplains Ave	WB	2	12	10	120	13
Harlem	Desplains Ave	WB	1	12	30	360	40
Harlem	Desplains Ave	WB	2,3	2	40	80	9
Harlem	Desplains Ave	WB	2	12	40	480	53
Harlem	Desplains Ave	WB	1	12	10	120	13
Harlem	Desplains Ave	WB	1	12	10	120	13
Harlem	Desplains Ave	WB	2	12	10	120	13
Harlem	Desplains Ave	WB	3	12	10	120	13
Harlem	Desplains Ave	WB	LTB	2	10	20	2
Harlem	Desplains Ave	WB	1,2	2	80	160	18
Harlem	Desplains Ave	WB	TB,1	2	40	80	9
Harlem	Desplains Ave	WB	2	12	10	120	13

ROUTE: Cermak EB & WB (Harlem Ave. to Wolf Rd.)

FROM	CROSS STREETS TO	DIRECTION (EB/WB) (NB/SB)	LANE NO. (1, 2, 3)	PAVEMENT PATCH WIDTH	PAVEMENT PATCH LENGTH	REPAIR AREA (SQ FT)	REPAIR AREA (SQ YD)
Harlem	Desplains Ave	WB	2	12	10	120	13
Harlem	Desplains Ave	WB	1,2	2	40	80	9
Harlem	Desplains Ave	WB	1	12	20	240	27
Harlem	Desplains Ave	WB	2	12	40	480	53
Harlem	Desplains Ave	WB	1	12	35	420	47
Harlem	Desplains Ave	WB	1,2	2	30	60	7
Harlem	Desplains Ave	WB	1	12	40	480	53
Harlem	Desplains Ave	WB	2	12	40	480	53
Harlem	Desplains Ave	WB	1	12	30	360	40
Harlem	Desplains Ave	WB	1	12	50	600	67
Harlem	Desplains Ave	WB	1	12	70	840	93
Harlem	Desplains Ave	WB	2	12	50	600	67
Harlem	Desplains Ave	WB	1,2	2	50	100	11
Harlem	Desplains Ave	WB	2	12	150	1800	200
Harlem	Desplains Ave	WB	2	12	80	960	107
Harlem	Desplains Ave	WB	1,2	2	100	200	22
Harlem	Desplains Ave	WB	2	12	100	1200	133
Harlem	Desplains Ave	WB	2	12	50	600	67
Harlem	Desplains Ave	WB	1	12	40	480	53
Harlem	Desplains Ave	WB	2	12	50	600	67
Harlem	Desplains Ave	WB	1,2	2	60	120	13
Harlem	Desplains Ave	WB	1	12	10	120	13
Harlem	Desplains Ave	WB	2	12	40	480	53
Harlem	Desplains Ave	WB	1	12	20	240	27
Harlem	Desplains Ave	WB	1,2	2	100	200	22
Harlem	Desplains Ave	WB	1,2	2	40	80	9
Harlem	Desplains Ave	WB	1,2	2	30	60	7
Harlem	Desplains Ave	WB	2	12	10	120	13
Harlem	Desplains Ave	WB	1	12	40	480	53
Harlem	Desplains Ave	WB	2	12	40	480	53
Harlem	Desplains Ave	WB	1,2	2	20	40	4
Harlem	Desplains Ave	WB	1	12	20	240	27
Harlem	Desplains Ave	WB	2	12	10	120	13
Harlem	Desplains Ave	WB	1	12	20	240	27
Harlem	Desplains Ave	WB	2	12	20	240	27
Harlem	Desplains Ave	WB	MED,1	2	40	80	9
Harlem	Desplains Ave	WB	1,2	2	30	60	7
Harlem	Desplains Ave	WB	2	12	10	120	13
Harlem	Desplains Ave	WB	1,2	2	50	100	11
Harlem	Desplains Ave	WB	TB,1	2	50	100	11
Harlem	Desplains Ave	WB	2	12	40	480	53
Desplains Ave	"1st Ave"	WB	2	12	10	120	13
Desplains Ave	"1st Ave"	WB	2,S	2	50	100	11
Desplains Ave	"1st Ave"	WB	1	12	10	120	13
Desplains Ave	"1st Ave"	WB	2	12	10	120	13
Desplains Ave	"1st Ave"	WB	3	12	10	120	13
Desplains Ave	"1st Ave"	WB	1	12	30	360	40
Desplains Ave	"1st Ave"	WB	2	12	40	480	53
Desplains Ave	"1st Ave"	WB	1	12	50	600	67
Desplains Ave	"1st Ave"	WB	2	12	50	600	67
Desplains Ave	"1st Ave"	WB	2	12	20	240	27
Desplains Ave	"1st Ave"	WB	1	12	10	120	13
Desplains Ave	"1st Ave"	WB	3	12	25	300	33
Desplains Ave	"1st Ave"	WB	1	12	10	120	13
Desplains Ave	"1st Ave"	WB	2	12	10	120	13
Desplains Ave	"1st Ave"	WB	3	12	15	180	20
Desplains Ave	"1st Ave"	WB	2	12	10	120	13
Desplains Ave	"1st Ave"	WB	1	12	50	600	67
Desplains Ave	"1st Ave"	WB	2	12	10	120	13
Desplains Ave	"1st Ave"	WB	3	12	10	120	13
Desplains Ave	"1st Ave"	WB	2	12	10	120	13
Desplains Ave	"1st Ave"	WB	1	12	30	360	40
Desplains Ave	"1st Ave"	WB	2,3	2	40	80	9
Desplains Ave	"1st Ave"	WB	2	12	40	480	53
Desplains Ave	"1st Ave"	WB	1	12	10	120	13
Desplains Ave	"1st Ave"	WB	1	12	10	120	13
Desplains Ave	"1st Ave"	WB	2	12	10	120	13
Desplains Ave	"1st Ave"	WB	3	12	10	120	13
Desplains Ave	"1st Ave"	WB	1	12	15	180	20

CONTINUED ON NEXT SHEET

FILE NAME =	USER NAME = smthkl	DESIGNED -	REVISED -	STATE OF ILLINOIS DEPARTMENT OF TRANSPORTATION	PATCHING SCHEDULE CERMAK RD.	F.A. RTE.	SECTION	COUNTY	TOTAL SHEETS	SHEET NO.	
ca:\pw_work\PWIDDT\SMITHKL\10125091\Desig	n.dgn	DRAWN -	REVISED -			VAR.	2009-025 PP	COOK	49	14	
PLOT SCALE = 103.7851' / IN.		CHECKED -	REVISED -			CONTRACT NO. 60C24					
PLOT DATE = 2/9/2009		DATE -	REVISED -			SCALE:	SHEET NO.	OF	SHEETS	STA.	TO STA.

ROUTE: Cermak EB & WB (Harlem Ave. to Wolf Rd.)

CROSS STREETS		DIRECTION (EB/WB) (NB/SB)	LANE NO. (1, 2, 3)	PAVEMENT PATCH WIDTH	PAVEMENT PATCH LENGTH	REPAIR AREA (SQ FT)	REPAIR AREA (SQ YD)
FROM	TO						
Desplains Ave	"1st Ave"	WB	2	12	10	120	13
Desplains Ave	"1st Ave"	WB	1,2	2	100	200	22
Desplains Ave	"1st Ave"	WB	1,2	2	50	100	11
Desplains Ave	"1st Ave"	WB	1,2	2	50	100	11
Desplains Ave	"1st Ave"	WB	3	12	10	120	13
Desplains Ave	"1st Ave"	WB	1,2	2	10	20	2
"1st Ave"	"17th Ave"	WB	1,2	2	240	480	53
"1st Ave"	"17th Ave"	WB	2,3	2	60	120	13
"1st Ave"	"17th Ave"	WB	3	12	100	1200	133
"1st Ave"	"17th Ave"	WB	3	12	20	240	27
"1st Ave"	"17th Ave"	WB	2	12	10	120	13
"1st Ave"	"17th Ave"	WB	2	12	40	480	53
"1st Ave"	"17th Ave"	WB	2,S	2	80	160	18
"1st Ave"	"17th Ave"	WB	2	12	20	240	27
"1st Ave"	"17th Ave"	WB	1	12	30	360	40
"1st Ave"	"17th Ave"	WB	2	12	15	180	20
"1st Ave"	"17th Ave"	WB	1	12	40	480	53
"1st Ave"	"17th Ave"	WB	1	12	60	720	80
"1st Ave"	"17th Ave"	WB	1	12	30	360	40
"1st Ave"	"17th Ave"	WB	1	12	40	480	53
"1st Ave"	"17th Ave"	WB	1	12	30	360	40
"1st Ave"	"17th Ave"	WB	1	12	20	240	27
"1st Ave"	"17th Ave"	WB	1	12	10	120	13
"1st Ave"	"17th Ave"	WB	2	12	20	240	27
"1st Ave"	"17th Ave"	WB	1	12	15	180	20
"1st Ave"	"17th Ave"	WB	1	12	10	120	13
"1st Ave"	"17th Ave"	WB	2	12	10	120	13
"1st Ave"	"17th Ave"	WB	1,2	2	60	120	13
"1st Ave"	"17th Ave"	WB	1	12	10	120	13
"1st Ave"	"17th Ave"	WB	1	12	10	120	13
"1st Ave"	"17th Ave"	WB	2	12	10	120	13
"1st Ave"	"17th Ave"	WB	1,2	2	40	80	9
"1st Ave"	"17th Ave"	WB	1	12	10	120	13
"1st Ave"	"17th Ave"	WB	1	12	20	240	27
"1st Ave"	"17th Ave"	WB	1	12	20	240	27
"1st Ave"	"17th Ave"	WB	2,S	2	50	100	11
"1st Ave"	"17th Ave"	WB	1	12	10	120	13
"1st Ave"	"17th Ave"	WB	TB,1	2	10	20	2
"1st Ave"	"17th Ave"	WB	1,2	2	10	20	2
"1st Ave"	"17th Ave"	WB	1	12	10	120	13
"1st Ave"	"17th Ave"	WB	1	12	30	360	40
"1st Ave"	"17th Ave"	WB	1	12	40	480	53
"1st Ave"	"17th Ave"	WB	2	12	10	120	13
"1st Ave"	"17th Ave"	WB	1,2	2	30	60	7
"1st Ave"	"17th Ave"	WB	2	12	10	120	13
"1st Ave"	"17th Ave"	WB	1	12	10	120	13
"17th Ave"	Manhiem	WB	2	12	10	120	13
"17th Ave"	Manhiem	WB	2	12	20	240	27
"17th Ave"	Manhiem	WB	1	12	30	360	40
"17th Ave"	Manhiem	WB	1	12	40	480	53
"17th Ave"	Manhiem	WB	2	12	10	120	13
"17th Ave"	Manhiem	WB	1	12	10	120	13
"17th Ave"	Manhiem	WB	2	12	40	480	53
"17th Ave"	Manhiem	WB	2	12	10	120	13
"17th Ave"	Manhiem	WB	2,S	2	60	120	13
"17th Ave"	Manhiem	WB	S,1	2	120	240	27
"17th Ave"	Manhiem	WB	1,2	2	120	240	27
"17th Ave"	Manhiem	WB	1	12	10	120	13
"17th Ave"	Manhiem	WB	1	12	10	120	13
"17th Ave"	Manhiem	WB	2	12	30	360	40
"17th Ave"	Manhiem	WB	TB	12	20	240	27
"17th Ave"	Manhiem	WB	2	12	30	360	40
"17th Ave"	Manhiem	WB	1	12	20	240	27
"17th Ave"	Manhiem	WB	2	12	200	2400	267
"17th Ave"	Manhiem	WB	1	12	10	120	13
"17th Ave"	Manhiem	WB	2	12	10	120	13
"17th Ave"	Manhiem	WB	1	12	80	960	107
"17th Ave"	Manhiem	WB	2	12	160	1920	213
"17th Ave"	Manhiem	WB	1	12	40	480	53
"17th Ave"	Manhiem	WB	2	12	10	120	13
"17th Ave"	Manhiem	WB	2	12	20	240	27
"17th Ave"	Manhiem	WB	2	12	15	180	20
"17th Ave"	Manhiem	WB	1	12	10	120	13
"17th Ave"	Manhiem	WB	2	12	10	120	13
"17th Ave"	Manhiem	WB	1	12	10	120	13
"17th Ave"	Manhiem	WB	2	12	10	120	13
"17th Ave"	Manhiem	WB	1	12	10	120	13
"17th Ave"	Manhiem	WB	2	12	10	120	13
"17th Ave"	Manhiem	WB	1,2	2	400	800	89
"17th Ave"	Manhiem	WB	1	12	40	480	53

ROUTE: Cermak EB & WB (Harlem Ave. to Wolf Rd.)

CROSS STREETS		DIRECTION (EB/WB) (NB/SB)	LANE NO. (1, 2, 3)	PAVEMENT PATCH WIDTH	PAVEMENT PATCH LENGTH	REPAIR AREA (SQ FT)	REPAIR AREA (SQ YD)
FROM	TO						
"17th Ave"	Manhiem	WB	2	12	20	240	27
"17th Ave"	Manhiem	WB	1,2	2	60	120	13
"17th Ave"	Manhiem	WB	1,2	2	100	200	22
"17th Ave"	Manhiem	WB	1,2	2	40	80	9
"17th Ave"	Manhiem	WB	1	12	40	480	53
"17th Ave"	Manhiem	WB	1	12	10	120	13
"17th Ave"	Manhiem	WB	2	12	10	120	13
"17th Ave"	Manhiem	WB	1,2	2	120	240	27
"17th Ave"	Manhiem	WB	2	12	10	120	13
"17th Ave"	Manhiem	WB	1	12	10	120	13
"17th Ave"	Manhiem	WB	1,2	2	120	240	27
"17th Ave"	Manhiem	WB	2	12	10	120	13
"17th Ave"	Manhiem	WB	1	12	10	120	13
"17th Ave"	Manhiem	WB	1,2	2	40	480	53
"17th Ave"	Manhiem	WB	1	12	40	480	53
"17th Ave"	Manhiem	WB	1,2	2	60	120	13
"17th Ave"	Manhiem	WB	2,S	2	30	60	7
"17th Ave"	Manhiem	WB	2	12	40	480	53
"17th Ave"	Manhiem	WB	1	12	40	480	53
"17th Ave"	Manhiem	WB	1,2	2	120	240	27
"17th Ave"	Manhiem	WB	2	12	10	120	13
"17th Ave"	Manhiem	WB	2	12	10	120	13
"17th Ave"	Manhiem	WB	2	12	10	120	13
"17th Ave"	Manhiem	WB	1,2	2	40	80	9
"17th Ave"	Manhiem	WB	1,2	2	30	60	7
"17th Ave"	Manhiem	WB	1,2	2	20	40	4
"17th Ave"	Manhiem	WB	2	12	60	720	80
"17th Ave"	Manhiem	WB	2	12	10	120	13
"17th Ave"	Manhiem	WB	2	12	40	480	53
"17th Ave"	Manhiem	WB	2	12	40	480	53
"17th Ave"	Manhiem	WB	1	12	40	480	53
"17th Ave"	Manhiem	WB	2	12	60	720	80
"17th Ave"	Manhiem	WB	1	12	10	120	13
"17th Ave"	Manhiem	WB	3	12	10	120	13
"17th Ave"	Manhiem	WB	S,1	2	50	100	11
Manhiem	Wolf	WB	1	12	30	360	40
Manhiem	Wolf	WB	1	12	40	480	53
Manhiem	Wolf	WB	1,2	2	20	40	4
Manhiem	Wolf	WB	1,2	2	50	100	11
Manhiem	Wolf	WB	2	12	50	600	67
Manhiem	Wolf	WB	2	12	20	240	27
Manhiem	Wolf	WB	2	12	10	120	13
Manhiem	Wolf	WB	1,2	2	60	120	13
Manhiem	Wolf	WB	1	12	30	360	40
Manhiem	Wolf	WB	2	12	20	240	27
Manhiem	Wolf	WB	1	12	15	180	20
Manhiem	Wolf	WB	2	12	15	180	20
Manhiem	Wolf	WB	1,2	2	160	320	36
Manhiem	Wolf	WB	1	12	20	240	27
Manhiem	Wolf	WB	2	12	10	120	13
Manhiem	Wolf	WB	2	12	10	120	13
Manhiem	Wolf	WB	2	12	10	120	13
Manhiem	Wolf	WB	1	12	10	120	13
Manhiem	Wolf	WB	2	12	10	120	13
Manhiem	Wolf	WB	1,2	2	40	80	9
Manhiem	Wolf	WB	2	12	10	120	13
Manhiem	Wolf	WB	1	12	10	120	13
Manhiem	Wolf	WB	1,2	2	400	800	89
Manhiem	Wolf	WB	1	12	40	480	53

CONTINUED ON NEXT SHEET

FILE NAME =	USER NAME = sm1thk1	DESIGNED -	REVISED -	STATE OF ILLINOIS DEPARTMENT OF TRANSPORTATION	PATCHING SCHEDULE CERMAK RD.	F.A. RTE.	SECTION	COUNTY	TOTAL SHEETS	SHEET NO.	
ca:\pw\work\PW100T\SM1THK1\01258091\Desig.dgn		DRAWN -	REVISED -			VAR.	2009-025 PP	COOK	49	15	
PLOT SCALE = 103.7051' / IN.		CHECKED -	REVISED -			SCALE: SHEET NO. OF SHEETS STA. TO STA.		CONTRACT NO. 60G24			
PLOT DATE = 2/9/2009		DATE -	REVISED -					FED. ROAD DIST. NO. ILLINOIS FED. AID PROJECT			

ROUTE: Cermak EB & WB (Harlem Ave. to Wolf Rd.)

CROSS STREETS		DIRECTION (EB/WB NB/SB)	LANE NO. (1, 2, 3)	PAVEMENT PATCH WIDTH	PAVEMENT PATCH LENGTH	REPAIR AREA (SQ FT)	REPAIR AREA (SQ YD)
FROM	TO						
Manhiem	Wolf	WB	1	12	40	480	53
Manhiem	Wolf	WB	1	12	60	720	80
Manhiem	Wolf	WB	2	12	40	480	53
Manhiem	Wolf	WB	1	12	40	480	53
Manhiem	Wolf	WB	2	12	30	360	40
Manhiem	Wolf	WB	2	12	60	720	80
Manhiem	Wolf	WB	2	12	10	120	13
Manhiem	Wolf	WB	2	12	10	120	13
Manhiem	Wolf	WB	1	12	20	240	27
Manhiem	Wolf	WB	2	12	10	120	13
Manhiem	Wolf	WB	2	12	30	360	40
Manhiem	Wolf	WB	2	12	20	240	27
Manhiem	Wolf	WB	2	12	20	240	27
Manhiem	Wolf	WB	1,2	2	100	200	22
Manhiem	Wolf	WB	2	12	10	120	13
Manhiem	Wolf	WB	2	12	10	120	13
Manhiem	Wolf	WB	1	12	10	120	13
Manhiem	Wolf	WB	1,2	2	60	120	13
Manhiem	Wolf	WB	2	12	80	960	107
Manhiem	Wolf	WB	1	12	120	1440	160
Manhiem	Wolf	WB	2	12	60	720	80
Manhiem	Wolf	WB	1,2	2	100	200	22
Manhiem	Wolf	WB	2	12	240	2880	320

TOTALS: 25320 FT 20849 SY

FILE NAME =	USER NAME = smthk1	DESIGNED -	REVISED -
ca:\pwork\PWIDOT\SMITHKLD0125091\Designdgn		DRAWN -	REVISED -
PLOT SCALE = 1/8" = 1' / IN.		CHECKED -	REVISED -
PLOT DATE = 2/9/2009		DATE -	REVISED -

**STATE OF ILLINOIS
DEPARTMENT OF TRANSPORTATION**

PATCHING SCHEDULE CERMAK RD.			
SCALE:	SHEET NO.	OF SHEETS	STA. TO STA.

F.A. RTE.	SECTION	COUNTY	TOTAL SHEETS	SHEET NO.
VAR.	2009-025 PP	COOK	49	16
			CONTRACT NO. 60G24	
FED. ROAD DIST. NO. ILLINOIS FED. AID PROJECT				

ROUTE: SB Cicero Ave (Grand/Armitage to North ave/ Addison)

CROSS STREETS		DIRECTION (EB/WB) (NB/SB)	LANE NO. (1, 2, 3)	PAVEMENT PATCH WIDTH	PAVEMENT PATCH LENGTH	REPAIR AREA (SQ FT)	REPAIR AREA (SQ YD)
FROM	TO						
1717 N CICERO		NB	2	12	15	180	20
	1952	NB	2	12	12	144	16
ARMITAGE	MCLEAN	NB				0	0
		BUS STOP	P/L	12	100	1200	133
FULLERTON	MONTANA	NB				0	0
		BUS STOP	P/L	8	100	800	89
WRIGHTWOOD		NB				0	0
		BUS STOP	P/L	8	75	600	67
ROSCOE	NEWPORT	NB				0	0
		BUS STOP	P/L	8	75	600	67
BELMONT		SW CORNER				0	0
		BUS STOP	P/L	8	100	800	89
DIVERSEY		NW CORNER				8	200
PARKER AVE		SB	P/L	8	30	240	27
SCHUBERT		NW CORNER				0	0
		BUS STOP	P/L	8	100	800	89
DRUMMOND	WRIGHTWOOD	BUS STOP	P/L	8	75	600	67
MEDILL	INTERSECTION	SB	2	12	12	144	16
BELDEN		NW CORNER	P/L	2	30	60	7
		SW CORNER	P/L	2	30	60	7
SHAKESPEARE	DICKENS	SB	P/L	8	250	2000	222
		SB	1,2	8	24	192	21
WABANSIA		NW CORNER	P/L	12	10	120	13

TOTAL 1238 FT 1127 SY

FILE NAME =	USER NAME = smthkl	DESIGNED -	REVISED -	STATE OF ILLINOIS DEPARTMENT OF TRANSPORTATION	PATCHING SCHEDULE CICERO AVE.			F.A. RTE.	SECTION	COUNTY	TOTAL SHEETS	SHEET NO.
cr\pwork\PMIDOT\SMITHKL\0125091\Desig.dgn	DRAWN -	REVISED -	VAR.					2009-025 PP	COOK	49	18	
PLOT SCALE = 103.7051' / IN.	CHECKED -	REVISED -	SCALE: SHEET NO. OF SHEETS STA. TO STA.			CONTRACT NO. 60G24						
PLOT DATE = 2/9/2009	DATE -	REVISED -	FED. ROAD DIST. NO. ILLINOIS FED. AID PROJECT									

ROUTE: EB & WB Fullerton Ave - Mannheim Rd. to 25th Ave

CROSS STREETS		DIRECTION (EB/WB) (NB/SB)	LANE NO. (1, 2, 3)	PAVEMENT PATCH WIDTH	PAVEMENT PATCH LENGTH	REPAIR AREA (SQ FT)	REPAIR AREA (SQ YD)
FROM	TO						
GUSTAVE	9654	WB	1	11	50	550	61
		EB	1	11	50	550	61
9654	9680	EB	1	11	25	275	31
		WB	1	11	25	275	31
		WB	1	11	20	220	24
9680	9700	EB	1	11	20	220	24
9700	9711	EB	1	11	20	220	24
		WB	1	11	30	330	37
9711	ATLANTIC	EB	1	11	25	275	31
		WB	1	11	20	220	24
ATLANTIC	RUBY ST	WB	1	11	20	220	24
		WB	1	11	100	1100	122
		EB	1	11	20	220	24
RUBY ST	EMERSON	WB	1	11	30	330	37
EMERSON	SILVER CREEK	EB	1	11	15	165	18
		WB	1	11	15	165	18
SILVER CREEK	HAWTHORNE	EB	1	11	30	330	37
HAWTHORNE	9941	EB	1	11	30	330	37
9941	SCOTT	EB	1	11	100	1100	122
		WB	1	11	50	550	61
		EB	1	12	200	2400	267
		WB	1	12	200	2400	267
SCOTT	10109	EB	1	12	200	2400	267
		EB	1	12	400	4800	533
		WB	1	12	400	4800	533
10109	10117	EB	1	12	50	600	67
10117	10125	WB	1	12	50	600	67
		EB	1	12	25	300	33
10125	10139	EB	1	12	50	600	67
		WB	1	12	40	480	53
		EB	JOINT	6	11	66	7
10139	10139	EB	1	12	1000	12000	1333
		WB	1	12	800	9600	1067

TOTAL 4121 FT 5410 SY

FILE NAME =	USER NAME = smthk1	DESIGNED -	REVISED -	STATE OF ILLINOIS DEPARTMENT OF TRANSPORTATION	PATCHING SCHEDULE FULLERTON AVE.			F.A. RTE.	SECTION	COUNTY	TOTAL SHEETS	SHEET NO.
ca\pwork\PWIDOT\SMITHK\08125091\Designdgn	PLOT SCALE = 1/8" = 1' IN.	DRAWN -	REVISED -					VAR.	2009-025 PP	COOK	49	19
	PLOT DATE = 2/9/2009	CHECKED -	REVISED -		SCALE:	SHEET NO.	OF SHEETS	STA.	TO STA.	FED. ROAD DIST. NO.	ILLINOIS FED. AID PROJECT	CONTRACT NO. 60C24
		DATE -	REVISED -									

ROUTE: EB Belmont Ave - 25th Ave to Harlem Ave

CROSS STREETS		DIRECTION (EB/WB) (NB/SB)	LANE NO. (1, 2, 3)	PAVEMENT PATCH WIDTH	PAVEMENT PATCH LENGTH	REPAIR AREA (SQ FT)	REPAIR AREA (SQ YD)
FROM	TO						
7420	7445	EB	1	12	100	1200	133
		EB	1	12	100	1200	133
7445	7450	EB	1	12	6	72	8
7450	7514	EB	1	12	6	72	8
7514	7525	EB	1	12	6	72	8
7525	7813	EB	1	12	8	96	11
7813	7835	EB	1	12	6	72	8
		WB	1	12	6	72	8
7835	AT DRIVEWAY	EB	2	12	15	180	20
8040	PARAMA AVE	EB	1	10	15	150	17
		EB	1	12	30	360	40
PARAMA Ave	PARIS AVE	EB	1	12	50	600	67
PARIS AVE	PIONEER AVE	EB	1	12	20	240	27
		EB	1	12	20	240	27
PIONEER	AT CURB LINE	WB	2	12	200	2400	267
		EB	1	12	50	600	67
AT CEMETARY		EB	2	12	20	240	27
		EB	2	12	100	1200	133

TOTAL 758 FT 1007 SY

ROUTE: IL 56 Butterfield Rd. from Mannheim to DuPage

CROSS STREETS		DIRECTION (EB/WB) (NB/SB)	LANE NO. (1, 2, 3)	PAVEMENT PATCH WIDTH	PAVEMENT PATCH LENGTH	REPAIR AREA (SQ FT)	REPAIR AREA (SQ YD)
FROM	TO						
County Line/Du-page-cook county		EB	1	12	10	120	13
		EB	1,2	24	12	288	32
		EB	1,2	24	14	336	37
		EB	1	12	8	96	11
		EB	1	12	6	72	8
		EB	1	12	8	96	11
		EB	1,2	24	4	96	11
		EB	1,2	24	10	240	27
		EB	2	12	6	72	8
		EB	1,2	24	4	96	11
		EB	1,2	24	6	144	16
		EB	1,2	24	4	96	11
		EB	2	12	6	72	8
		EB	1,2	12	4	48	5
		EB	1,2	12	10	120	13
		EB	1	12	4	48	5
		EB	1	12	6	72	8
		EB	1	12	4	48	5
		EB	1	12	8	96	11
		EB	1	12	6	72	8
		EB	1	12	4	48	5
		EB	1,2	24	10	240	27
		EB	12	24	10	240	27
by Clayton Rnd		EB	1	12	150	1800	200
		EB	1	12	40	480	53
		EB	1	12	80	960	107
		EB	1	12	70	840	93
51 st and jackson		EB	1	12	80	960	107
		EB	1	12	30	360	40
		EB	1	12	40	480	53
		EB	1	12	30	360	40
		EB	1	12	20	240	27
		EB	1	12	20	240	27
		EB	1	12	15	180	20
		EB	2	12	30	360	40
		EB	2	12	10	120	13
		EB	1	12	8	96	11
		EB	1	12	70	840	93
		EB	1	12	20	240	27
		EB	1	12	40	480	53
		EB	1	12	30	360	40
	To U.S 45	WB	1	12	30	360	40
U. S 45		WB	1	12	30	360	40
by Carwash		WB	1	12	60	720	80
	to Grandville and 46 st	WB	1	12	70	840	93
		WB	1	12	40	480	53
		WB	1	12	30	360	40
		WB	1	12	50	600	67
by kingdomhall		WB	1	12	60	720	80
west of kingdomhall		WB	1	12	150	1800	200
		WB	1	12	40	480	53
		WB	1	12	30	360	40
		WB	1	12	60	720	80
By clayton Rd		WB	1	12	40	480	53
		WB	1	12	35	420	47
		WB	1	12	6	72	8
		WB	1	12	10	120	13
		WB	1	12	6	72	8
		WB	1	12	10	120	13
		WB	1,2	24	12	288	32
		WB	1	12	4	48	5
		WB	1	12	8	96	11
		WB	1	12	4	48	5
		WB	1	12	8	96	11
		WB	1	12	4	48	5
		WB	1	12	6	72	8
		WB	1,2	24	6	144	16
		WB	1,2	24	40	960	107
		WB	1,2	24	10	240	27
		WB	1,2	24	8	192	21
		WB	1,2	24	6	144	16
		WB	1,2	24	4	96	11
	By Du-page County /and Cook -ll	WB	1,2	24	50	1200	133

TOTALS: 1844 FT 2739 SY

FILE NAME =	USER NAME = smthkl	DESIGNED -	REVISED -	STATE OF ILLINOIS DEPARTMENT OF TRANSPORTATION	PATCHING SCHEDULE IL 56 (BUTTERFIELD RD.)	F.A. RTE.	SECTION	COUNTY	TOTAL SHEETS	SHEET NO.	
az:\pw\work\VP\WIDOT\SMITHKL\d0125091\Design\dgn		DRAWN -	REVISED -			VAR.	2009-025 PP	COOK	49	22	
		CHECKED -	REVISED -			SCALE: SHEET NO. OF SHEETS STA. TO STA.		CONTRACT NO. 60624			
		DATE -	REVISED -			FED. ROAD DIST. NO. ILLINOIS FED. AID PROJECT					
PLOT SCALE = 1/8" = 100' / IN.		PLOT DATE = 2/9/2009									

ROUTE: Long Arm Ramp - WB Archer to NB LaGrange Rd

CROSS STREETS		DIRECTION (EB/WB) (NB/SB)	LANE NO. (1, 2, 3)	PAVEMENT PATCH WIDTH	PAVEMENT PATCH LENGTH	REPAIR AREA (SQ FT)	REPAIR AREA (SQ YD)
FROM	TO						
WB ARCHER	NB LAGRANGE	WB	1	12	6	72	8
			2	12	6	72	8
			1	12	6	72	8
			2	12	6	72	8
			1	12	6	72	8
			2	12	6	72	8
			1	12	6	72	8
			2	12	6	72	8
	RAMP		1	12	10	120	13
			2	12	15	180	20
			1	12	6	72	8
			1	12	10	120	13
			2	12	15	180	20
			1	12	6	72	8
			1	12	10	120	13
			1	12	15	180	20
			1	12	15	180	20
			1	12	10	120	13
			1	12	6	72	8
			1	12	6	72	8
	END OF RAMP		1	12	30	360	40
	AT SPLIT TO LAGRANGE		1	12	100	1200	133

TOTALS: 324 FT 432 SY

ROUTE: NB & SB Harlem Ave - Irving Park Rd to North Ave

CROSS STREETS		DIRECTION (EB/WB NB/SB)	LANE NO. (1, 2, 3)	PAVEMENT PATCH WIDTH	PAVEMENT PATCH LENGTH	REPAIR AREA (SQ FT)	REPAIR AREA (SQ YD)
FROM	TO						
NORTH AVE	1701	NB	1	12	25	300	33
		SB	1	12	25	300	33
	SEARS DRIVEWAY	NB P/L		8	50	400	44
	SEARS PARKING	NB	2	12	100	1200	133
		SB	1	12	10	120	13
	SEARS AUTO	NB	1	12	25	300	33
1701	SHERWIN WILLIAMS	NB	1	12	12	144	16
		NB	1	12	12	144	16
	ELMWOOD COMMONS	SB	1	8	12	96	11
	BLOOMINGDALE	SB	1	12	15	180	20
1921		NB	1	12	12	144	16
1916		SB	1	12	12	144	16
1929		NB	1	12	10	120	13
1930		SB	1	12	10	120	13
2016		SB	1	12	15	180	20
2036		SB	1	12	30	360	40
		NB	1	12	18	216	24
2124		SB	1	12	25	300	33
2144	AT MARATHON GAS	SB	P/L	8	30	240	27
		SB	1	12	12	144	16
2200		SB	1	12	12	144	16
2218		SB	1	12	12	144	16
		SB	1	12	12	144	16
2214		NB	1	12	12	144	16
2228	AT BELDEN	NB	1	12	12	144	16
2300		SB	1	12	12	144	16
		SB	1	12	12	144	16
2310		SB	1	12	15	180	20
GRAND	HARLEM	NB	1	12	12	144	16
		SB	1	12	12	144	16
2434		SB/NB	JOINT	8	200	1200	133
2505		NB	1	12	12	144	16
2525	AT HARLEM FURN	NB	1	12	12	144	16
		NB	1	12	12	144	16
2601	AT CAPUTUS MARKET	SB	1	12	12	144	16
		SB	1	12	12	144	16
		NB	1	12	12	144	16
2620		SB	1	12	12	144	16
		NB	1	12	12	144	16
2638	AT SCHUBERT	SB	1	12	20	240	27
2652		SB	1	12	12	144	16
2654		SB	1	12	20	240	27
2700		SB	1	12	12	144	16
		NB	1	12	12	144	16
2735		NB	1	12	15	180	20
2838		SB	1	12	20	240	27
GEORGE ST		NB	1	12	12	144	16
2954		NB	1	8	15	120	13
2946		SB	1	8	20	160	18
3046		SB	1	12	12	144	16
BELMONT	AT WHITE CASTLE	SB	1	15	20	300	33
3308		NB	1	12	12	144	16
3326	AT ANNA BELLE	SB	1	12	6	72	8
3406		SB	1	12	6	72	8
		NB	1	12	6	72	8
3413		NB	1	12	6	72	8
3422		SB	1	12	6	72	8
3432		SB	1	12	20	240	27
3438		SB	1	12	15	180	20
3452		SB	1	6	50	300	33
		SB	2	8	20	160	18
3541	AT MCDONALDS	SB	1	6	20	120	13
AUGUSTA	AT NAPA AUTO	NB	1	12	6	72	8
3723		NB	1	8	12	96	11
3730 N CICERO		SB	1	8	12	96	11
3746		SB	1	12	15	180	20
3758		SB	1	12	20	240	27
GRACE ST		SB	1	12	15	180	20
		NB	1	12	12	144	16
3820		SB	1	12	12	144	16
		NB	1	12	20	240	27
IRVING PARK RD		SB	1	15	15	225	25

TOTAL 1375 FT 1589 SY

FILE NAME =	USER NAME = smithk1	DESIGNED -	REVISED -	STATE OF ILLINOIS DEPARTMENT OF TRANSPORTATION	PATCHING SCHEDULE HARLEM AVE.			F.A. RTE.	SECTION	COUNTY	TOTAL SHEETS	SHEET NO.
et:\pwork\PW\DOT\SMITHKL\0125091\Design.dgn		DRAWN -	REVISED -					VAR.	2009-025 PP	COOK	49	26
		CHECKED -	REVISED -		SCALE:	SHEET NO. OF SHEETS	STA.	TO STA.	CONTRACT NO. 60G24			
		DATE -	REVISED -					FED. ROAD DIST. NO.	ILLINOIS FED. AID PROJECT			

ROUTE: NB & SB Naragansett - Addison to North Ave

CROSS STREETS		DIRECTION (EB/WB) (NB/SB)	LANE NO. (1, 2, 3)	PAVEMENT PATCH WIDTH	PAVEMENT PATCH LENGTH	REPAIR AREA (SQ FT)	REPAIR AREA (SQ YD)
FROM	TO						
NORTH AVE	1633 N NARAGANSETT	NB	1	16	400	6400	711
1647 N NARAGANSETT	1657 N NARAGANSETT	NB	1	12	12	144	16
		SB	1	12	12	144	16
1657 N NARAGANSETT	1713 N NARAGANSETT	NB	1	12	15	180	20
		SB	1	12	6	72	8
1713 N NARAGANSETT	BLOOMINGDALE INTERS	NB	1	40	300	12000	1333
		SB	1	40	300	12000	1333
BLOOMINGDALE INTER	1810 N NARAGANSETT			12	40	480	53
1810	1827	NB	1	12	75	900	100
1827	1850	SB	1	12	150	1800	200
1850	1901	SB	1	12	150	1800	200
1901	2216	NB	1	12	800	9600	1067
		SB	1	12	800	9600	1067
2216	FULLERTON	SB	1	12	10	120	13
FULLERTON	BABYS R US DRWY	NB	2	12	450	5400	600
BABYS R US	BURGER KING	NB	1	11	150	1650	183
		NB	2	11	150	1650	183
BURGER KING	BABYS R US	SB	1	22	80	1760	196
		SB	1	11	30	330	37
		SB	2	11	30	330	37
BABYS R US DRWY	CHARTER ONE BANK	SB	1	11	100	1100	122
		SB	2	11	100	1100	122
		SB	1	11	800	8800	978
		SB	2	11	800	8800	978
CHARTER ONE BANK	2850 N NARRAGANSETT	NB	P/L	8	250	2000	222
2850 N NARRAGANSETT	WELLINGTON	NB	P/L	15	100	1500	167
WELLINGTON	BARRY INTERSECTION	NB	P/L	8	300	2400	267
BARRY INTERSECTION	FLETCHER INTERSECTI	NB	1	15	30	450	50
FLETCHER INTERSECT	MELROSE	NB	1	12	20	240	27
		SB	1	12	20	240	27
		NB	1	12	50	600	67
MELROSE	SCHOOL ST	NB		6	100	600	67
SCHOOL ST (BUS STOP	3343 N NARRAGANSETT	SB	1	12	40	480	53
3343	3401	NB	1	12	12	144	16
		SB	1	12	12	144	16
3401	3401	NB	1	12	8	96	11

TOTALS: 6702 10562
FT SY

FILE NAME =	USER NAME = smthk1	DESIGNED -	REVISED -	STATE OF ILLINOIS DEPARTMENT OF TRANSPORTATION	PATCHING SCHEDULE NARRAGANSETT AVE.			F.A. RTE.	SECTION	COUNTY	TOTAL SHEETS	SHEET NO.
es:\pwork\VPWIDOT\SMITHKL\d81250\91\Design.dgn		DRAWN -	REVISED -					VAR.	2009-025 PP	COOK	49	27
		CHECKED -	REVISED -					CONTRACT NO. 60024				
		DATE -	REVISED -									
PLOT SCALE = 1/8" = 100' / IN.		PLOT DATE = 2/9/2009		SCALE:		SHEET NO. OF SHEETS STA.		TO STA.		FED. ROAD DIST. NO. ILLINOIS FED. AID PROJECT		

ROUTE: Ogden Ave. (Harlem Ave. to Cicero Ave.)

CROSS STREETS		DIRECTION (EB/WB) (NB/SB)	LANE NO. (1, 2, 3)	PAVEMENT PATCH WIDTH	PAVEMENT PATCH LENGTH	REPAIR AREA (SQ FT)	REPAIR AREA (SQ YD)
FROM	TO						
Harlem	Cicero	EB					
East Ave			1	11	30	330	37
			2	11	15	165	18
Austin ave			1	11	45	495	55
			3	11	25	275	31
50th CT			1	11	45	495	55
		WB					
			2	11	250	2750	306
			1,2	22	125	2750	306
54th			2	11	75	825	92
31st			2	11	75	825	92
Austin			1,2	22	65	1430	159
			2	11	35	385	43

TOTALS: 785 1192
FT SY

ROUTE: Roosevelt Rd (Manheim to Cicero)

CROSS STREETS		DIRECTION (EB/WB) (NB/SB)	LANE NO. (1, 2, 3)	PAVEMENT PATCH WIDTH	PAVEMENT PATCH LENGTH	REPAIR AREA (SQ FT)	REPAIR AREA (SQ YD)
FROM	TO						
Manheim	Cicero	EB					
	Manheim		2	11	140	1540	171
	Derbylane		2	11	75	825	92
	Porthsmouth		1,2	22	10	220	24
	Norfolk		1	11	20	220	24
	Manchester		1	11	15	165	18
	Bristol		1	11	20	220	24
	25th		1,2	22	30	660	73
	22nd		1,2	22	20	440	49
	21st		1,2	22	20	440	49
			2	11	150	1650	183
	20th		2	11	20	220	24
	19th		2	11	40	440	49
	18th		1,2	22	10	220	24
	17th		1,2	22	40	880	98
			2	11	120	1320	147
	15th		2	11	20	220	24
	13th		2	11	15	165	18
	4th		2	11	40	440	49
	1st Ave		2	11	100	1100	122
			1	11	50	550	61
	Des Plaines		2	11	20	220	24
	Circle		2	11	10	110	12
CONSTRUCTION THRU LOMBARD AVE							
	Taylor		1	11	10	110	12
	austin		1	11	15	165	18
	Mayfield		1	11	130	1430	159
	57th		1	11	100	1100	122
	56th		2	11	50	550	61
	Central		2	11	15	165	18
			1,2	22	30	660	73
			1,2	22	100	2200	244
	54th		1	11	70	770	86
			2	11	60	660	73
	Laramie		2	11	40	440	49
			2	11	100	1100	122
			2	11	15	165	18
	51st Ave		2	11	20	220	24
			1	11	15	165	18

ROUTE: Roosevelt Rd (Manheim to Cicero)

CROSS STREETS		DIRECTION (EB/WB) (NB/SB)	LANE NO. (1, 2, 3)	PAVEMENT PATCH WIDTH	PAVEMENT PATCH LENGTH	REPAIR AREA (SQ FT)	REPAIR AREA (SQ YD)
FROM	TO						
	50th Ct		1	11	75	825	92
	50th ave		1	11	150	1650	183
			WB				
	Cicero		2	11	120	1320	147
	50th Ct		2	11	130	1430	159
	51st		2	11	20	220	24
			1	11	70	770	86
	Laramie		1,2	22	60	1320	147
			1	11	20	220	24
			1	11	35	385	43
	54th		1	11	50	550	61
			2	11	70	770	86
			1,2	22	80	1760	196
			1,2	22	70	1540	171
			1	11	40	440	49
	Central Ave		2	11	15	165	18
			1	11	30	330	37
	58th		1	11	120	1320	147
			1	11	40	440	49
	Monitor		2	11	50	550	61
	Mayfield		1	11	35	385	43
	Mason		1	11	25	275	31
	Austin		2	11	20	220	24
	Lyman		2	11	15	165	18
	Lombard		1	11	30	330	37
	Highland		1	11	30	330	37
	Cuyler		2	11	30	330	37
	Gunderson		2	11	75	825	92
	east		2	11	50	550	61
	Park		2	11	40	440	49
	Clinton		2	11	15	165	18
	Harlem		1	11	20	220	24
	Des Plaines		1	11	25	275	31
			2	11	10	110	12
			1	11	75	825	92
			2	11	30	330	37
			1	11	100	1100	122
			2	11	30	330	37
	1st Ave		2	11	65	715	79

TOTALS: 3720 FT 5121 SY

ROUTE: SB,NB Harlem Ave from North Ave to Lake Street

CROSS STREETS		DIRECTION (EB/WB) (NB/SB)	LANE NO. (1, 2, 3)	PAVEMENT PATCH WIDTH	PAVEMENT PATCH LENGTH	REPAIR AREA (SQ FT)	REPAIR AREA (SQ YD)
FROM	TO						
Lake Street	North Ave	NB	2	11	60	660	73
Chicago Ave			2	11	100	1100	122
Miller			2	11	125	1375	153
Augusta			2	11	50	550	61
			2	11	75	825	92
			2	11	25	275	31
			2	11	15	165	18
		SB					
Thomas			2	11	65	715	79
			2	11	75	825	92
Augusta			2	11	45	495	55
			2	11	65	715	79
Chicago			2	11	35	385	43

TOTALS: 735 FT 898 SY

ROUTE: SB&NB Harlem Ave. (Ogden to 87th Street)

CROSS STREETS		DIRECTION (EB/WB NB/SB)	LANE NO. (1, 2, 3)	PAVEMENT PATCH WIDTH	PAVEMENT PATCH LENGTH	REPAIR AREA (SQ FT)	REPAIR AREA (SQ YD)
FROM	TO						
87th	Ogden Ave	NB	2	11	25	275	31
84th Street			2	11	200	2200	244
83rd			2	11	250	2750	306
81st			2	11	500	5500	611
79th			2	11	150	1650	183
			1	11	100	1100	122
Ogden	87th Street	SB	1,2	22	120	2640	293
Pershing Rd			1,2	22	25	550	61
			2	11	10	110	12
			2	11	15	165	18
Joliet Rd			2	11	20	220	24
43rd			2	11	45	495	55
46th			2	11	25	275	31
Forest			1,2	22	150	3300	367
			1,2	22	40	880	98
			2	11	25	275	31
			1	11	20	220	24
			2	11	25	275	31
Harlem over I-55 Bridge			1,2,3	33	150	4950	550
Hanover			1,2	22	50	1100	122
71st			2	11	25	275	31
73rd			2	11	200	2200	244
79th			1,2	22	30	660	73
80th			2	11	15	165	18
			2	11	45	495	55
83rd			2	11	50	550	61
			2	11	150	1650	183
			2	11	25	275	31
87th			2	11	150	1650	183
				12	12	144	16

TOTALS:

2647
FT

4110
SY

FILE NAME =	USER NAME = smthk1	DESIGNED -	REVISED -	STATE OF ILLINOIS DEPARTMENT OF TRANSPORTATION	PATCHING SCHEDULE HARLEM AVE.			F.A. RTE.	SECTION	COUNTY	TOTAL SHEETS	SHEET NO.
es:\pwwork\pwidot\SMITHKLD0125091\Design.dgn		DRAWN -	REVISED -		SCALE:	SHEET NO. OF SHEETS	STA. TO STA.	VAR.	2009-025 PP	COOK	49	34
		CHECKED -	REVISED -					CONTRACT NO. 60C24				
		DATE -	REVISED -					FED. ROAD DIST. NO. ILLINOIS FED. AID PROJECT				

ROUTE: State Rd. (79th St. to Cicero Ave.)

CROSS STREETS		DIRECTION (EB/WB) (NB/SB)	LANE NO. (1, 2, 3)	PAVEMENT PATCH WIDTH	PAVEMENT PATCH LENGTH	REPAIR AREA (SQ FT)	REPAIR AREA (SQ YD)
FROM	TO						
Cicero	79th Street	SW	1,2	11	150	1650	183
			2	11	40	440	49
			2	11	30	330	37
			2	11	45	495	55
		NE	1,2	22	100	2200	244
Lathrop			1	11	75	825	92
			1	11	35	385	43
			1	11	25	275	31
			1	11	75	825	92
			1	11	100	1100	122

TOTALS: 675 FT 947 SY

ROUTE: Taft Ave. (Butterfield to St. Charles Rd.)

CROSS STREETS		DIRECTION (EB/WB) (NB/SB)	LANE NO. (1, 2, 3)	PAVEMENT PATCH WIDTH	PAVEMENT PATCH LENGTH	REPAIR AREA (SQ FT)	REPAIR AREA (SQ YD)
FROM	TO						
St Charles	Butterfield	SB					
			1	11	35	385	43
	Bohlander		2	11	60	660	73
	Electric Ave		1	11	40	440	49
	Ridge		1	11	100	1100	122
	Washington		1	11	75	825	92
			1	11	50	550	61
	Prospect		1	11	25	275	31
	Madison		1	11	75	825	92
Butterfield	Taft	NB					
	Madison		1,2	20	100	2000	222
	Locust		1,2	20	75	1500	167
	Warren		1,2	20	25	500	56
			1	10	100	1000	111
	Washington		1,2	20	75	1500	167
	Ridge		1	10	25	250	28
			1	10	15	150	17
	Electric		1	10	40	400	44
			1	10	20	200	22
	Rose		2	10	50	500	56
	Hawthorne		2	10	15	150	17
	Albin		2	10	20	200	22
	Bohlander		1	10	45	450	50

TOTALS: 1065 FT 1540 SY

ROUTE: US 45 LaGrange Rd. - Cermak Ave. to Brewster

CROSS STREETS		DIRECTION (EB/WB) (NB/SB)	LANE NO. (1, 2, 3)	PAVEMENT PATCH WIDTH	PAVEMENT PATCH LENGTH	REPAIR AREA (SQ FT)	REPAIR AREA (SQ YD)
FROM	TO						
	1015 N LAGRANGE	NB	2	12	100	1200	133
	BP STATION 31ST	NB	2	12	12	144	16
		NB	1	12	15	180	20
		NB	2	12	15	180	20
	1200	NB	1	12	20	240	27
		NB	2	12	20	240	27
	AT CEMETARY	NB	1	12	6	72	8
		NB	1	12	20	240	27
		NB	1	12	100	1200	133
		NB	1	12	75	900	100
		NB	1	12	50	600	67
		NB	1	12	40	480	53
		NB	1	12	15	180	20
		NB	2	12	15	180	20
	1500	NB	1	12	15	180	20
		NB	2	12	15	180	20
	AT JOINT	NB	1	6	200	1200	133
		NB	1	12	20	240	27
	AT FOREST AREA	NB	2	12	50	600	67
		NB	1	12	30	360	40
CERMAK	AT FOREST AREA	SB	2	6	50	300	33
		SB	1	12	10	120	13
		SB	2	6	50	300	33
		SB	1	12	8	96	11
		SB	2	12	20	240	27
		SB	1	12	15	180	20
		SB	1	12	15	180	20
		SB	1	12	200	2400	267
	1500 S LAGRANGE	SB	1	12	100	1200	133
		SB	2	12	50	600	67
	AT CEMETARY	SB	2	12	30	360	40
		SB	2	12	20	240	27
		SB	2	12	10	120	13
		SB	2	12	20	240	27
		SB	2	12	10	120	13
		SB	2	12	15	180	20
	720	SB	2	12	15	180	20
		SB	2	12	15	180	20
	522	SB	2	12	12	144	16

TOTALS: 1498 FT 1797 SY

FILE NAME =	USER NAME = smthk1	DESIGNED -	REVISED -	STATE OF ILLINOIS DEPARTMENT OF TRANSPORTATION	PATCHING SCHEDULE US 45 (LAGRANGE RD.)			F.A. RTE.	SECTION	COUNTY	TOTAL SHEETS	SHEET NO.			
c:\pwork\PWIDOT\SMITHKL\d0125091\Design.dgn		DRAWN -	REVISED -		SCALE:	SHEET NO.	OF	SHEETS	STA.	TO STA.	VAR.	2009-025 PP	COOK	49	37
PLOT SCALE = 103.7051' / IN.		CHECKED -	REVISED -		CONTRACT NO. 60C24										
PLOT DATE = 2/9/2009		DATE -	REVISED -		ILLINOIS FED. AID PROJECT										

ROUTE: WB Belmont Ave - Forest Preserve Dr. to River Rd

CROSS STREETS		DIRECTION (EB/WB) (NB/SB)	LANE NO. (1, 2, 3)	PAVEMENT PATCH WIDTH	PAVEMENT PATCH LENGTH	REPAIR AREA (SQ FT)	REPAIR AREA (SQ YD)
FROM	TO						
FOREST PRESERVE		WB	1	12	100	1200	133
		WB				0	0
9545	EDGINGTON ST	WB	2	12	6	72	8
		WB	2	12	10	120	13
		WB	2	12	15	180	20
		WB	2	12	6	72	8
		WB	2	12	6	72	8
		WB	2	12	25	300	33
		WB	2	12	15	180	20
EDGINGTON ST	9394	WB	2	12	15	180	20
9394	9200	WB	2	12	100	1200	133
9200	9100	WB	2	12	80	960	107
9100	CARWASH	WB	2	12	15	180	20
		WB	2	12	6	72	8
		WB	1	12	15	180	20
		WB	2	12	35	420	47
TOTAL					449 FT	599 SY	

ROUTE: WB North Ave - 5th Ave to I-290 Exprwy

CROSS STREETS		DIRECTION (EB/WB) (NB/SB)	LANE NO. (1, 2, 3)	PAVEMENT		REPAIR AREA (SQ. FT)	REPAIR AREA (SQ. YD)
FROM	TO			PATCH WIDTH	PATCH LENGTH		
VIADUCT	7TH AVE	WB	1	12	6	72	8
		WB	2	12	6	72	8
7TH AVE	9TH AVE	WB	2	12	6	72	8
	AT CARWASH	WB	1	12	6	72	8
		WB	2	12	6	72	8
	AT BOSTON MARKET	WB	1	12	20	240	27
9TH AVE	1801	WB	1	12	20	240	27
		WB	2	12	20	240	27
	AT CHUCKE CHEESE	WB	2	12	6	72	8
	AT TOYS R US	WB	3	12	6	72	8
		WB	1	12	6	72	8
1801	1815	WB	2	12	6	72	8
1815	2407	WB				0	0
	PRIGNANO FUNERAL H	WB	3	12	6	72	8
	TOMS STEAK HOUSE	WB	3	12	25	300	33
	JEWEL OSCO	WB	2	12	6	72	8
		WB	3	12	15	180	20
2407	30TH AVE	WB	3	12	50	600	67
	AL PIEMONTE	WB	1	12	6	72	8
		WB	2	12	6	72	8
		WB	3	12	6	72	8
30TH AVE	VIADUCT	WB	2	12	300	3600	400
		WB	3	12	300	3600	400
VIADUCT	35TH AVE	WB	2	12	6	72	8
		WB	3	12	6	72	8
	PEP BOYS	WB	1	12	6	72	8
		WB	2	12	10	120	13
		WB	3	12	10	120	13
		WB	1	12	6	72	8
		WB	2	12	6	72	8
		WB	3	12	6	72	8
		WB	1	12	10	120	13
		WB	2	12	20	240	27
		WB	3	12	75	900	100
		WB	3	12	50	600	67
35TH AVE	39TH AVE	WB	1	12	6	72	8
39TH AVE	MANNHEIM RD	WB	3	12	20	240	27

ROUTE: WB North Ave - 5th Ave to I-290 Exprwy

CROSS STREETS		DIRECTION (EB/WB) (NB/SB)	LANE NO. (1, 2, 3)	PAVEMENT		REPAIR AREA (SQ. FT)	REPAIR AREA (SQ. YD)
FROM	TO			PATCH WIDTH	PATCH LENGTH		
MANNHEIM RD	4501	WB	2	12	6	72	8
4501	4533	WB	2	12	20	240	27
		WB	1	12	6	72	8
4533	404	WB	3	12	200	2400	267
404	318	WB				0	0
	STATE FARM INS	WB	1	12	10	120	13
		WB	2	12	10	120	13
		WB	1	12	6	72	8
		WB	2	12	6	72	8
		WB	3	12	6	72	8
318	278	WB	1	12	6	72	8
		WB	2	12	6	72	8
		WB	3	12	6	72	8
		WB	3	6	1000	6000	667
278	240	WB	2	12	10	120	13
240	ROY AVE	WB	2	12	15	180	20
ROY AVE	116	WB	1	12	20	240	27
		WB	2	12	20	240	27
		WB	3	6	200	1200	133
	116 DUNKIN DONUTS	WB	3	6	500	3000	333
	PRATER AVE	WB	3	6	15	90	10
	58	WB	3	6	300	1800	200
	ALDI FOODS	WB	2	12	10	120	13
		WB	2	12	6	72	8
		WB	2	12	6	72	8
		WB	3	12	6	72	8
DUNKIN DONUTS	DUNKIN DONUTS	WB	1	12	6	72	8
		WB	2	12	6	72	8
AT I-290	AT I-290	WB	1	12	10	120	13
		WB	2	12	10	120	13
		WB	3	12	10	120	13
		WB	2	12	30	360	40
		WB	3	12	50	600	67
		WB	1	12	50	600	67
		WB	3	12	35	420	47

TOTALS: 3684 FT 3569 SY

ROUTE: NB & SB Willow Springs Rd - IL-171 Archer to Concoran Rd.

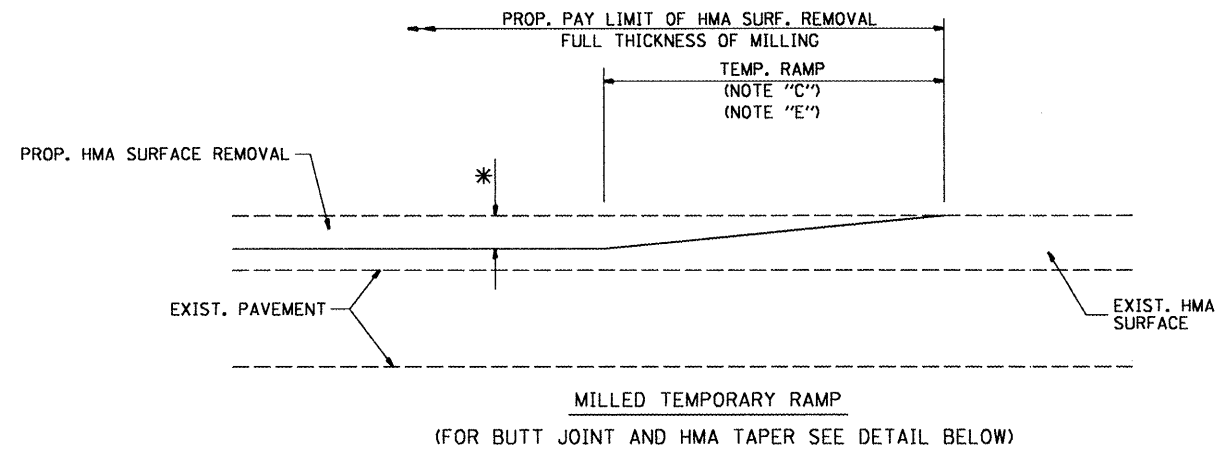
CROSS STREETS		DIRECTION (EB/WB) (NB/SB)	LANE NO. (1, 2, 3)	PAVEMENT PATCH WIDTH	PAVEMENT PATCH LENGTH	REPAIR AREA (SQ FT)	REPAIR AREA (SQ YD)
FROM	TO						
	AT APPROACH BRIDGE	NB	1	12	100	1200	133
	AT BRIDGE	NB	2	12	6	72	8
		NB	2	12	75	900	100
	BRIDGE AT JOINT	NB	1	12	75	900	100
		NB	2	12	75	900	100
		NB	1	12	100	1200	133
		NB	2	12	100	1200	133
	JOINT AT APPROACH	SB	1	12	6	72	8
		SB	2	12	6	72	8
		NB	1	12	6	72	8
	AT BRIDGE	SB	1	12	10	120	13
		SB	2	12	10	120	13
		SB	1	12	75	900	100
		SB	1	12	30	360	40
		SB	1	12	15	180	20
		SB	2	12	30	360	40

TOTALS: 719 FT 959 SY

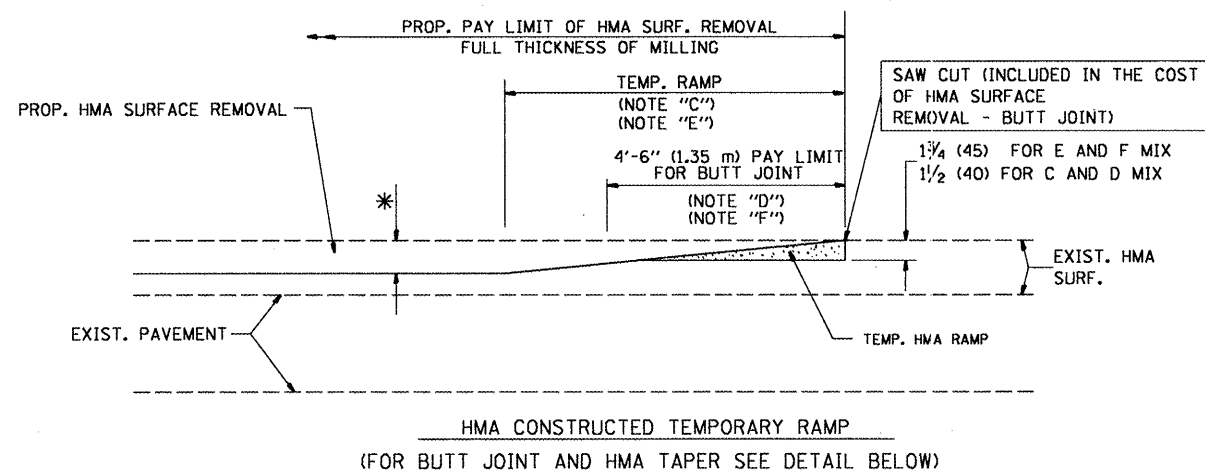
ROUTE:

Central Cook County - Various Routes and Limits

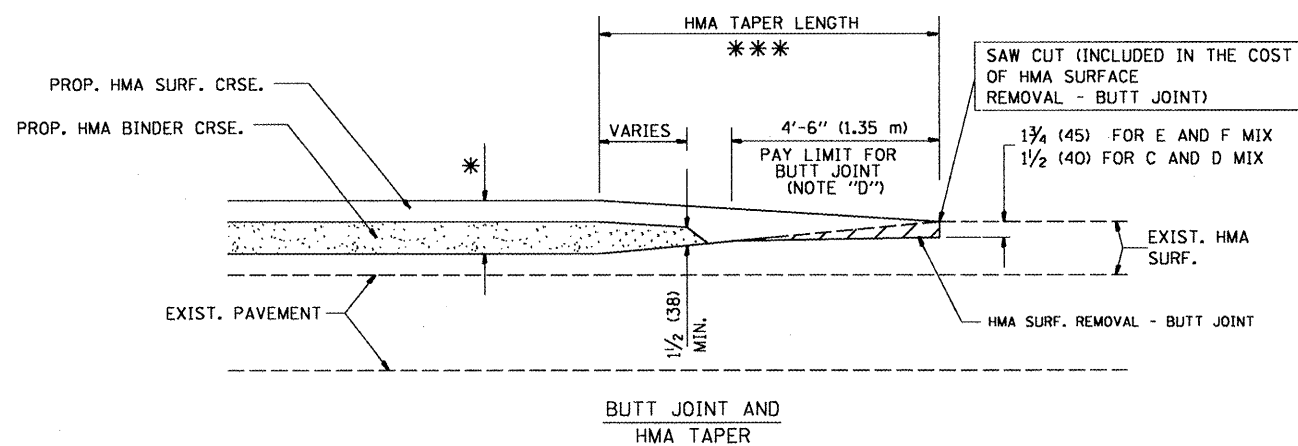
ROUTE	CROSS STREETS		DIRECTION (EB/WB) (NB/SB)	REPAIR AREA (SQ YD)
	FROM	TO		
79TH ST.	CICERO AVE.	IL 171 (ARCHER AVE.)	EB/WB	9856
LAWRENCE AVE.	E. RIVER RD.	0.1 MILE W/O RIVER RD.	EB/WB	1120
LAKE ST.	9TH AVE.	MANNHEIM RD.	EB/WB	3614
MANNHEIM RD.	BELMONT AVE.	ARCHER AVE.	NB	6160
CICERO AVE.	ARMITAGE AVE.	ADDISON ST.	NB/SB	3550
IL 171 (ARCHER AVE.)	55TH ST.	WILLOW SPRINGS RD.	NB/SB	1852



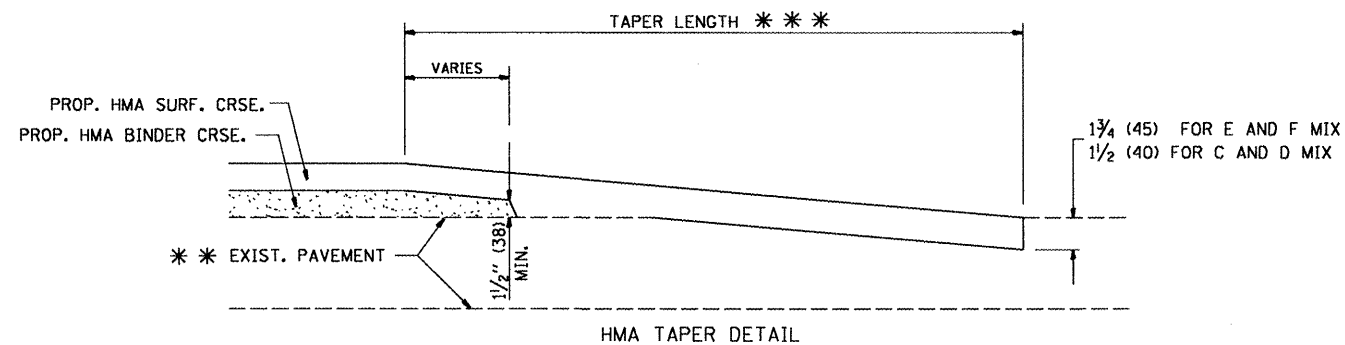
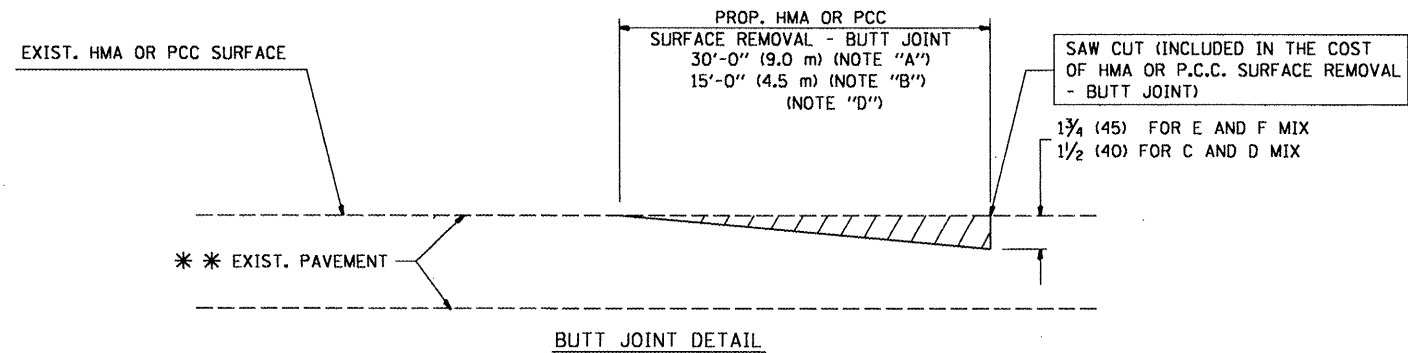
OPTION 1



**OPTION 2
TYPICAL TEMPORARY RAMP**



**TYPICAL BUTT JOINT AND HMA TAPER
FOR MILLING AND RESURFACING**



**TYPICAL BUTT JOINT AND HMA TAPER
FOR RESURFACING ONLY**

*** PC CONCRETE, HMA OR HMA RESURFACED PAVEMENT.

NOTES

- A: MAINLINE ROADWAYS AND MAJOR SIDE ROADS.
 - B: MINOR SIDE ROADS.
 - C: THE TEMP. RAMP SHALL BE CONSTRUCTED IMMEDIATELY UPON REMOVAL OF THE EXISTING HMA SURFACE.
 - D: THE BUTT JOINT SHALL BE CONSTRUCTED IMMEDIATELY PRIOR TO PLACING THE PROPOSED HMA COURSES.
 - E: TAPER THE TEMP. RAMP AT A RATE OF 3'-0" (900 mm) PER 1 INCH (25 mm) OF MILLING THICKNESS.
 - F: INSTALLATION AND REMOVAL OF THE 4'-6" (1.35 m) TEMP. RAMP IS INCLUDED IN COST OF HMA SURFACE REMOVAL - BUTT JOINT
 - G: SEE ARTICLE 406.08 AND 406.14 OF THE STANDARD SPECIFICATIONS FOR "HMA AND/OR PCC SURFACE REMOVAL, BUTT JOINT".
- * SEE TYPICAL SECTIONS FOR MILLING THICKNESS.
- *** 20'-0" (6.1 m) PER 1 (25) RESURFACING (NOTE "A")
10'-0" (3.0 m) PER 1 (25) RESURFACING (NOTE "B")

BASIS OF PAYMENT:

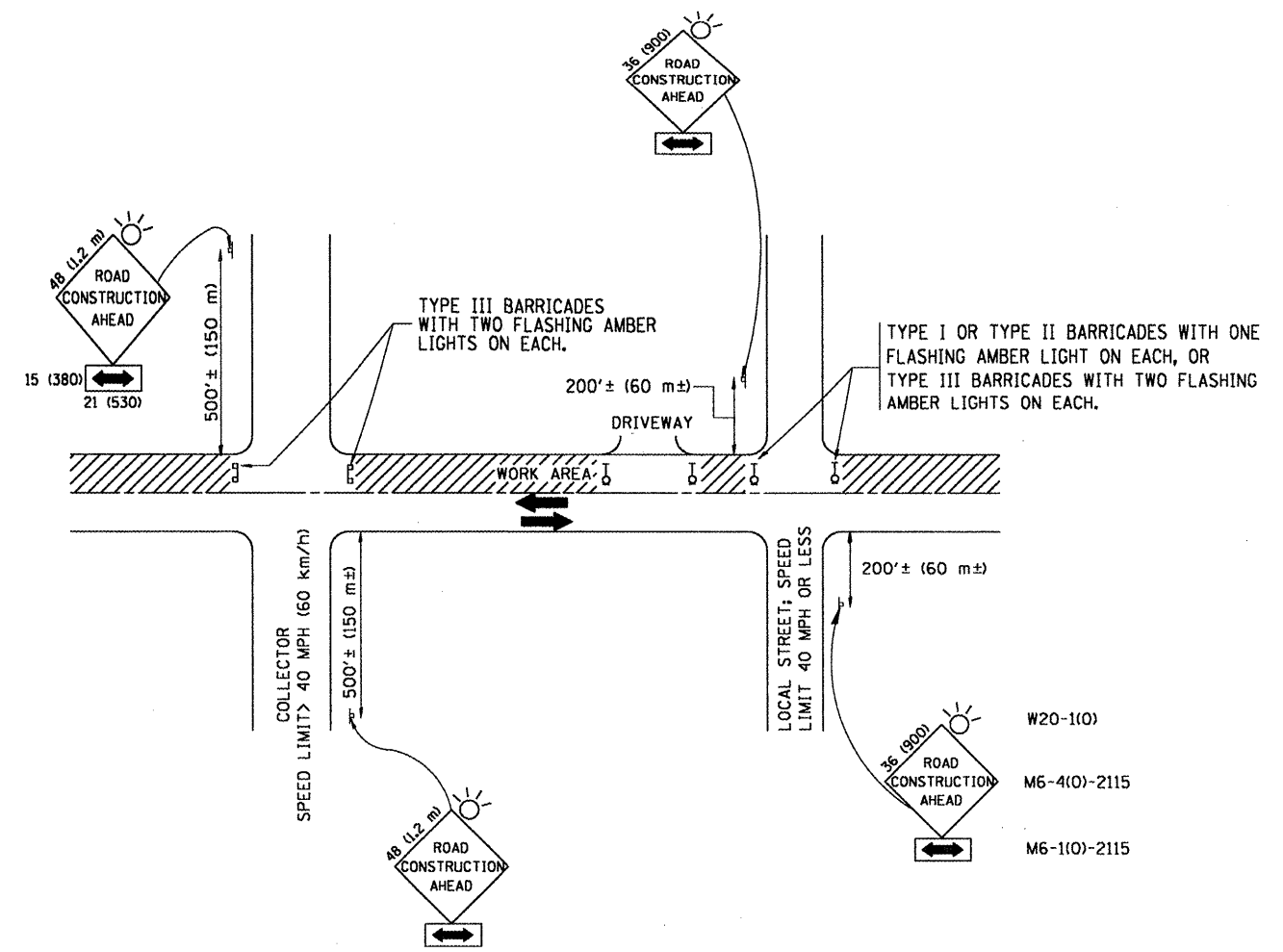
THE BUTT JOINT WILL BE PAID FOR AT THE CONTRACT UNIT PRICE PER SQUARE YARD (SQUARE METER) FOR "HOT-MIX ASPHALT SURFACE REMOVAL - BUTT JOINT" OR FOR "PORTLAND CEMENT CONCRETE SURFACE REMOVAL - BUTT JOINT".

ALL DIMENSIONS ARE IN INCHES (MILLIMETERS) UNLESS OTHERWISE SHOWN.

FILE NAME =	USER NAME = smthkl	DESIGNED - M. DE YONG	REVISED - R. SHAH 10-25-94
et\pw\work\PWIDDT\SMITHKL\d0125091\Dist	td.dgn	DRAWN -	REVISED - A. ABBAS 03-21-97
PLOT SCALE = 1/8" = 1' / IN.	CHECKED -	REVISED - M. GOMEZ 04-06-01	
PLOT DATE = 2/3/2009	DATE - 06-13-90	REVISED - R. BORO 01-01-07	

**STATE OF ILLINOIS
DEPARTMENT OF TRANSPORTATION**

BUTT JOINT AND HMA TAPER DETAILS		F.A. RTE.	SECTION	COUNTY	TOTAL SHEETS	SHEET NO.
SCALE: NONE	SHEET NO. 1 OF 1 SHEETS	VAR.	2009-025 PP	COOK	49	42
		BD400-05 BD32		CONTRACT NO. 60G24		
		FED. ROAD DIST. NO. 1 ILLINOIS FED. AID PROJECT				



TRAFFIC CONTROL AND PROTECTION FOR SIDE ROADS, INTERSECTIONS, AND DRIVEWAYS

NOTES:

A. FOR NO LANE RESTRICTION ON THE SIDE ROAD OR DRIVEWAYS

- SIDE ROAD WITH A SPEED LIMIT OF 40 MPH (60 km/h) OR LESS AS SHOWN ON THE DRAWING AND AS DIRECTED BY THE ENGINEER:
 - ONE **ROAD CONSTRUCTION AHEAD** SIGN 36 x 36 (900x900) WITH A FLASHER AND FLAG MOUNTED ON IT APPROXIMATELY 200' (60 m) IN ADVANCE OF THE MAIN ROUTE.
 - THE CLOSED PORTION OF THE MAIN ROUTE SHALL BE PROTECTED BY BLOCKING WITH TYPE I, TYPE II OR TYPE III BARRICADES, 1/3 OF THE CROSS SECTION OF THE CLOSED PORTION.
- SIDE ROAD WITH A SPEED LIMIT GREATER THAN 40 MPH (60 km/h) AS SHOWN ON THE DRAWING AND AS DIRECTED BY THE ENGINEER:
 - ONE **ROAD CONSTRUCTION AHEAD** SIGN 48 x 48 (1.2 m x 1.2 m) WITH A FLASHER MOUNTED ON IT APPROXIMATELY 500' (150 m) IN ADVANCE OF THE MAIN ROUTE.
 - THE CLOSED PORTION OF THE MAIN ROUTE SHALL BE PROTECTED BY BLOCKING WITH TYPE III BARRICADES, 1/2 OF THE CROSS SECTION OF THE CLOSED PORTION.
- WHEN THE SIDE ROAD LIES BETWEEN THE BEGINNING OF THE MAINLINE SIGNING AND THE WORK ZONE, A SINGLE HEADED ARROW (M6-1) SHALL BE USED IN LIEU OF THE DOUBLE HEADED ARROW (M6-4).

B. FOR A LANE CLOSURE ON A SIDE ROAD OR DRIVEWAY:

USE APPLICABLE PORTIONS OF THE TYPICAL APPLICATION OF TRAFFIC CONTROL DEVICES (STD. 701501, STD. 701606 OR THE APPROPRIATE STANDARD). THE SPACING OF SIGNS AND BARRICADES SHALL BE ADJUSTED FOR FIELD CONDITIONS AS DIRECTED BY THE ENGINEER. THE DIRECTIONAL ARROW SHALL BE COVERED OR REMOVED WHEN NO LONGER CONSISTENT WITH THE SIDE ROAD LANE CLOSURE.

C. ADVANCE WARNING SIGNS ARE TO BE OMITTED ON DRIVEWAY UNLESS OTHERWISE NOTED.

D. THE TRAFFIC CONTROL AND PROTECTION FOR SIDE ROADS, INTERSECTIONS, AND DRIVEWAYS SHALL BE INCIDENTAL TO THE COST OF SPECIFIED TRAFFIC CONTROL STANDARDS OR ITEMS.

All dimensions are in millimeters (inches) unless otherwise shown.

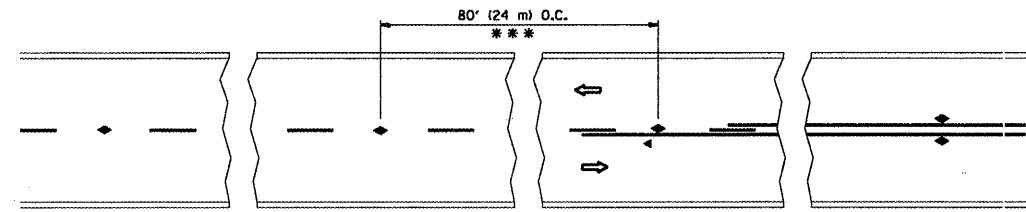
FILE NAME =	USER NAME = smthkl	DESIGNED - LHA	REVISED - J. OBERLE 10-18-95
ce:\pw\work\XPWIDOT\SMITHKL\d0125091\01st.dgn		DRAWN -	REVISED - A. HOUSEH 03-06-96
		PLOT SCALE = 100.0000' / IN.	REVISED - A. HOUSEH 10-15-96
		PLOT DATE = 2/3/2009	REVISED - T. RAMMACHER 01-06-00
		DATE - 06-89	

**STATE OF ILLINOIS
DEPARTMENT OF TRANSPORTATION**

**TRAFFIC CONTROL AND PROTECTION FOR
SIDE ROADS, INTERSECTIONS, AND DRIVEWAYS**

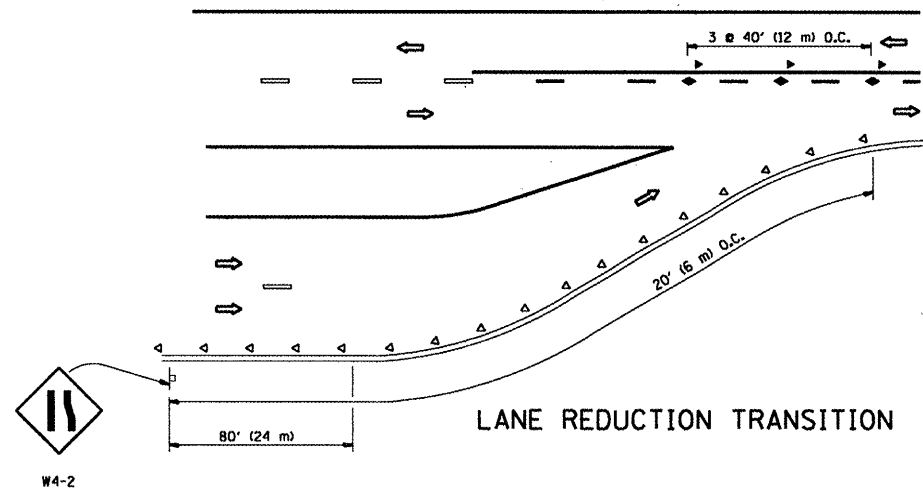
SCALE: NONE SHEET NO. 1 OF 1 SHEETS STA. TO STA.

F.A. RTE.	SECTION	COUNTY	TOTAL SHEETS	SHEET NO.
VAR.	2009-025 PP	COOK	49	43
TC-10			CONTRACT NO. 60G24	
FED. ROAD DIST. NO. 1 ILLINOIS FED. AID PROJECT				

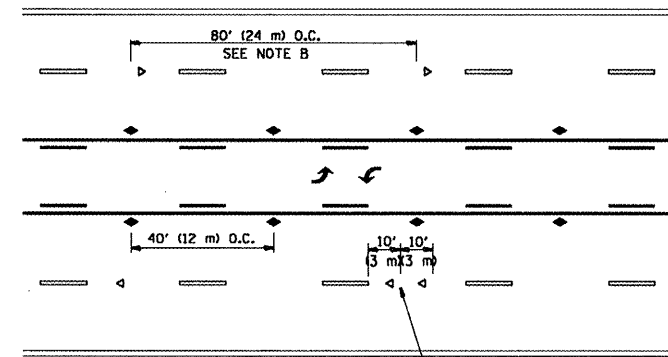


*** REDUCE TO 40' (12 m) O.C. ON CURVES WITH POSTED OR ADVISORY SPEED 45 M.P.H. (70 km/h) OR LESS.

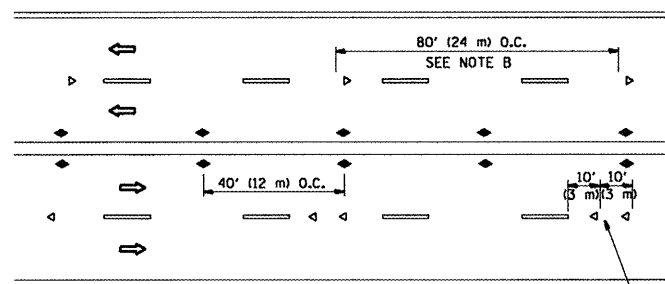
TWO-LANE/TWO-WAY



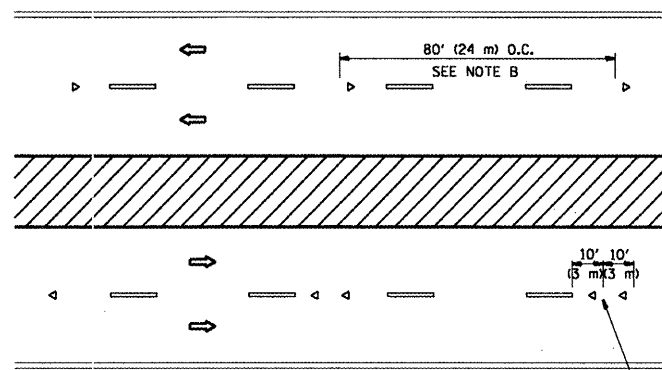
LANE REDUCTION TRANSITION



TWO-WAY LEFT TURN



MULTI-LANE/UNDIVIDED



MULTI-LANE/DIVIDED

GENERAL NOTES

1. MARKERS USED WITH DASHED LINES SHALL BE CENTERED IN THE GAP BETWEEN SEGMENTS.
2. MARKERS USED ADJACENT TO SOLID LINES SHALL BE OFFSET 2 TO 3 (50 TO 75) TOWARD TRAFFIC AS SHOWN.
3. MARKERS THROUGH TANGENTS LESS THAN 500' (150 m) IN LENGTH BETWEEN CURVES SHALL BE INSTALLED AT THE LESSER OF THE TWO CURVE SPACINGS.

SYMBOLS

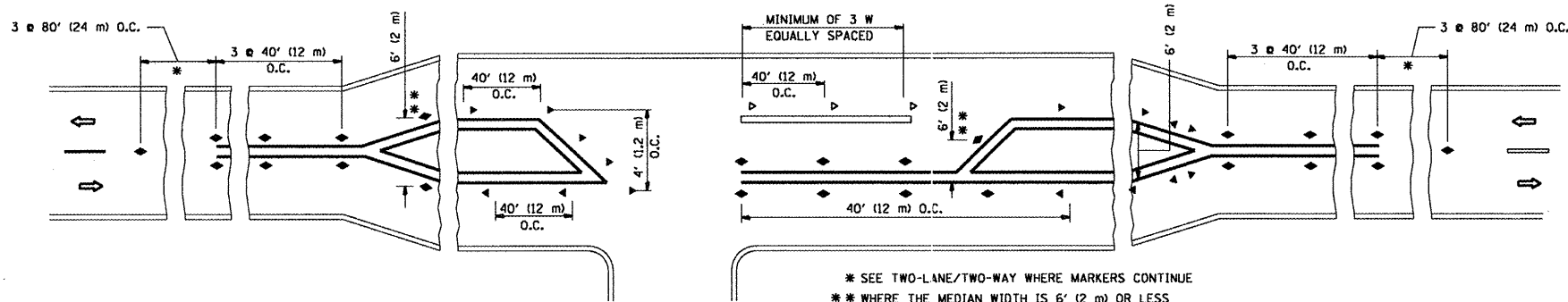
- YELLOW STRIPE
- WHITE STRIPE
- ◀ ONE-WAY AMBER MARKER
- ◁ ONE-WAY CRYSTAL MARKER (W/O)
- ◆ TWO-WAY AMBER MARKER

LANE MARKER NOTES

- B. REDUCE TO 40' (12 m) O.C. ON CURVES WHERE ADVISORY SPEEDS ARE 10 M.P.H. (20 km/h) LOWER THAN POSTED SPEEDS.
- A. USE DOUBLE LANE LINE MARKERS SPACED AS SHOWN.

DESIGN NOTES

1. DOUBLE LANE LINE MARKERS SHALL BE USED UNLESS SPECIFIED OTHERWISE.
2. EXCEPT AS SHOWN ON THE LANE REDUCTION TRANSITION AND FREEWAY EXIT RAMP DETAIL, MARKERS ARE NOT TO BE SPECIFIED ON RIGHT EDGE LINES.
3. THE EXACT MARKER LIMITS, SPACING, AND COLOR SHOULD BE INCLUDED IN THE PLANS.
4. MARKERS SHOULD NOT BE USED ALONGSIDE CURBS EXCEPT FOR EXTREMELY SHORT SECTIONS OF CURBS WHERE NOT MORE THAN TWO MARKERS WOULD BE INVOLVED.



LEFT TURN

* SEE TWO-LANE/TWO-WAY WHERE MARKERS CONTINUE
 ** WHERE THE MEDIAN WIDTH IS 6' (2 m) OR LESS USE TWO-WAY MARKERS.

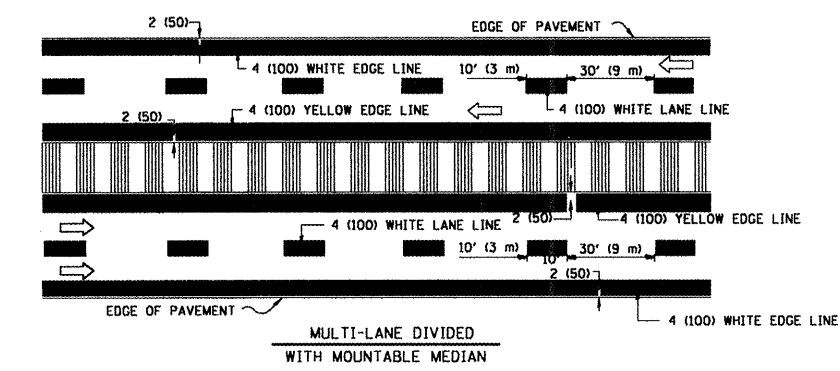
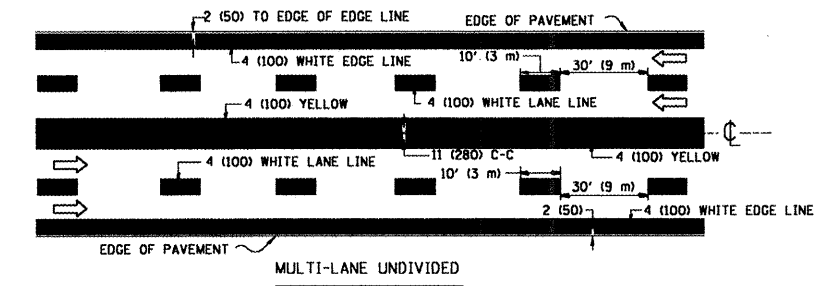
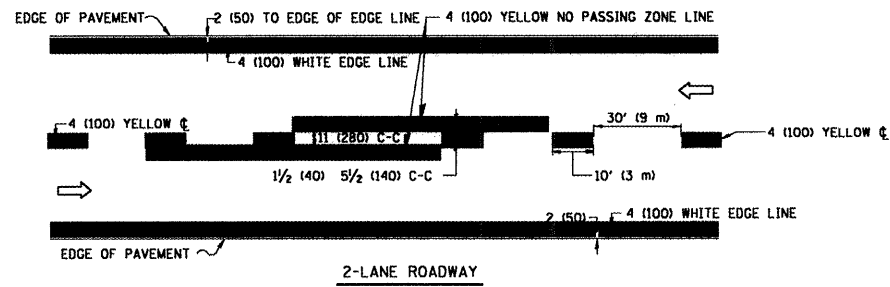
All dimensions are in inches (millimeters) unless otherwise shown.

FILE NAME =	USER NAME = sm1thkl	DESIGNED -	REVISED - T. RAMMACHER 09-19-94
ca:\pwwork\pwwid01\SMITHKL\d0125091\Dist1.td.dgn		DRAWN -	REVISED - T. RAMMACHER 03-12-99
	PLOT SCALE = 100.0000' / IN.	CHECKED -	REVISED - T. RAMMACHER 01-06-00
	PLOT DATE = 2/3/2009	DATE -	REVISED -

STATE OF ILLINOIS
 DEPARTMENT OF TRANSPORTATION

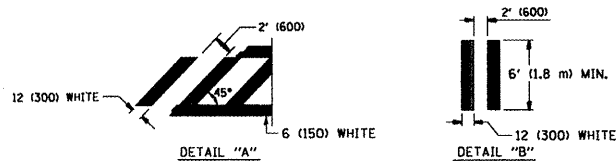
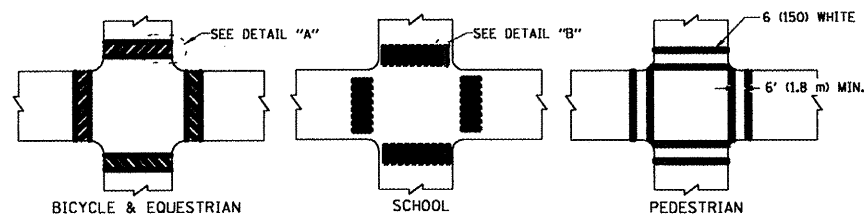
TYPICAL APPLICATIONS			
RAISED REFLECTIVE PAVEMENT MARKERS (SNOW-PLOW RESISTANT)			
SCALE: NONE	SHEET NO. 1 OF 1 SHEETS	STA.	TO STA.

F.A. RTE.	SECTION	COUNTY	TOTAL SHEETS	SHEET NO.
VAR.	2009-025 PP	COOK	49	44
TC-11		CONTRACT NO. 60G24		
FED. ROAD DIST. NO. 1 ILLINOIS FED. AID PROJECT				

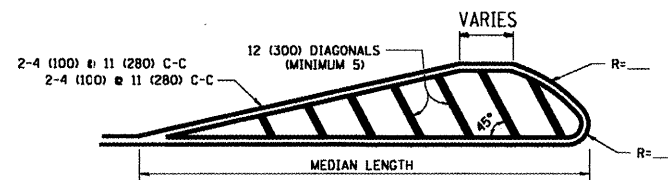
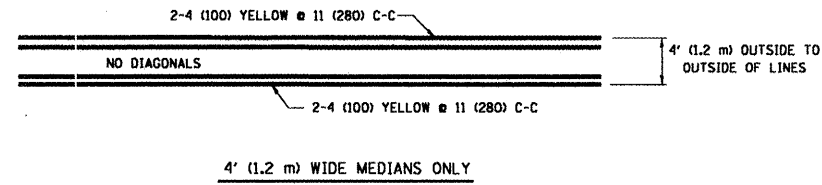


NOTE: MEDIANS WITH BARRIER CURB DO NOT REQUIRE AN EDGE LINE

TYPICAL LANE AND EDGE LINE MARKING

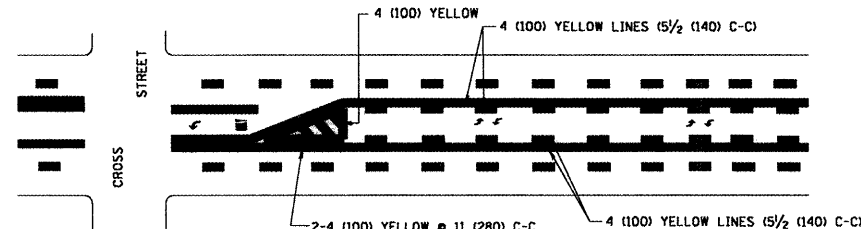


TYPICAL CROSSWALK MARKING

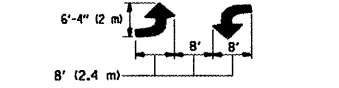


FOR MEDIAN LENGTHS WHERE DIAGONAL SPACING CANNOT BE ATTAINED, USE 5 (FIVE) EQUALLY SPACED DIAGONAL LINES.
 DIAGONAL LINE SPACING: 50' (15 m) C-C (LESS THAN 30MPH (50 km/h))
 75' (25 m) C-C 30MPH (50 km/h) TO 45MPH (70 km/h))
 150' (45 m) C-C (MORE THAN 45MPH (70 km/h))

MEDIANS OVER 4' (1.2 m) WIDE

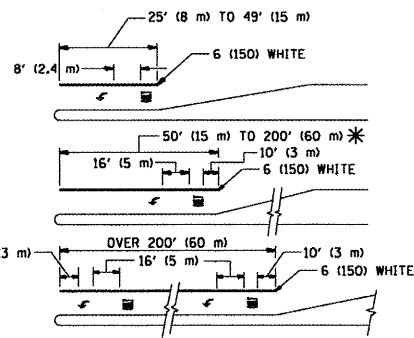


A MINIMUM OF TWO PAIRS OF TURN ARROWS SHALL BE USED, WHITE IN COLOR. ADDITIONAL PAIRS SHALL BE PLACED AT 200' (60 m) TO 300' (90 m) INTERVALS.



MEDIAN WITH TWO-WAY LEFT TURN LANE

TYPICAL PAINTED MEDIAN MARKING

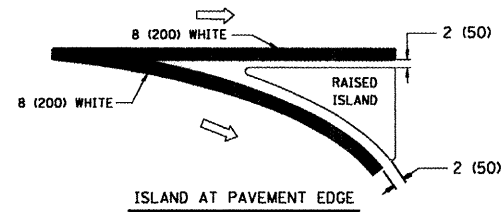
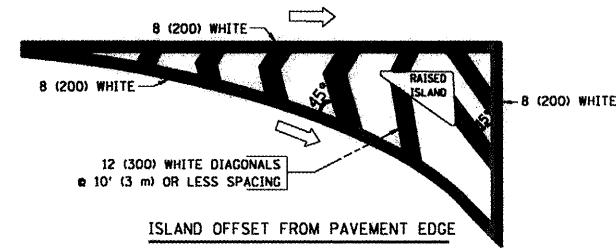


FULL SIZE LETTERS 8' (2.4 m) AND ARROWS SHALL BE USED.
 AREA = 15.6 SQ. FT. (1.5 m²) AREA = 20.8 SQ. FT. (1.9 m²)

* TURN LANES IN EXCESS OF 400' (120 m) IN LENGTH MAY HAVE AN ADDITIONAL SET OF ARROW - "ONLY" INSTALLED MIDWAY BETWEEN THE OTHER TWO SETS OF ARROW - "ONLY".

TYPICAL LEFT (OR RIGHT) TURN LANE

TYPICAL TURN LANE MARKING



TYPICAL ISLAND MARKING

TYPE OF MARKING	WIDTH OF LINE	PATTERN	COLOR	SPACING / REMARKS
CENTERLINE ON 2 LANE PAVEMENT	4 (100)	SKIP-DASH	YELLOW	10' (3 m) LINE WITH 30' (9 m) SPACE
CENTERLINE ON MULTI-LANE UNDIVIDED PAVEMENT	2 @ 4 (100)	SOLID	YELLOW	11 (280) C-C
NO PASSING ZONE LINES: FOR ONE DIRECTION FOR BOTH DIRECTIONS	4 (100) 2 @ 4 (100)	SOLID SOLID	YELLOW YELLOW	5 1/2 (140) C-C FROM SKIP-DASH CENTERLINE 11 (280) C-C OMIT SKIP-DASH CENTERLINE BETWEEN
LANE LINES	4 (100) 5 (125) ON FREEWAYS	SKIP-DASH SKIP-DASH	WHITE WHITE	10' (3 m) LINE WITH 30' (9 m) SPACE
DOTTED LINES (EXTENSIONS OF CENTER, LANE OR TURN LANE MARKINGS)	SAME AS LINE BEING EXTENDED	SKIP-DASH	SAME AS LINE BEING EXTENDED	2' (600) LINE WITH 6' (1.8 m) SPACE
EDGE LINES	4 (100)	SOLID	YELLOW-LEFT WHITE-RIGHT	OUTLINE MOUNTABLE MEDIANS IN YELLOW; EDGE LINES ARE NOT USED NEXT TO BARRIER CURB
TURN LANE MARKINGS	6 (150) LINE; FULL SIZE LETTERS & SYMBOLS (8' (2.4m))	SOLID	WHITE	SEE TYPICAL TURN LANE MARKING DETAIL
TWO WAY LEFT TURN MARKING	2 @ 4 (100) EACH DIRECTION 8' (2.4m) LEFT ARROW	SKIP-DASH AND SOLID IN PAIRS	YELLOW WHITE	10' (3 m) LINE WITH 30' (9 m) SPACE FOR SKIP-DASH; 5 1/2 (140) C-C BETWEEN SOLID LINE AND SKIP-DASH LINE SEE TYPICAL TWO-WAY LEFT TURN MARKING DETAIL
CROSSWALK LINES (PEDESTRIAN) A. DIAGONALS (BIKE & EQUESTRIAN) B. LONGITUDINAL BARS (SCHOOL)	2 @ 6 (150) 12 (300) @ 45° 12 (300) @ 90°	SOLID SOLID SOLID	WHITE WHITE WHITE	NOT LESS THAN 6' (1.8 m) APART 2' (600) APART SEE TYPICAL CROSSWALK MARKING DETAILS.
STOP LINES	24 (600)	SOLID	WHITE	PLACE 4' (1.2 m) IN ADVANCE OF AND PARALLEL TO CROSSWALK, IF PRESENT. OTHERWISE, PLACE AT DESIRED STOPPING POINT, PARALLEL TO CROSSROAD CENTERLINE, WHERE POSSIBLE
PAINTED MEDIANS	2 @ 4 (100) WITH 12 (300) DIAGONALS @ 45° NO DIAGONALS USED FOR 4' (1.2 m) WIDE MEDIANS	SOLID	YELLOW: TWO WAY TRAFFIC WHITE: ONE WAY TRAFFIC	11 (280) C-C FOR THE DOUBLE LINE SEE TYPICAL PAINTED MEDIAN MARKING.
GORE MARKING AND CHANNELIZING LINES	8 (200) WITH 12 (300) DIAGONALS @ 45°	SOLID	WHITE	DIAGONALS: 15' (4.5 m) C-C (LESS THAN 30MPH (50 km/h)) 20' (6 m) C-C 30MPH (50 km/h) TO 45MPH (70 km/h)) 30' (9 m) C-C (OVER 45MPH (70 km/h))
RAILROAD CROSSING	24 (600) TRANSVERSE LINES; "RR" IS 6' (1.8 m) LETTERS; 16 (400) LINE FOR "X"	SOLID	WHITE	SEE STATE STANDARD 780001 AREA OF: "R"=3.6 SQ. FT. (0.33 m ²) EACH "X"=54.0 SQ. FT. (5.0 m ²)
SHOULDER DIAGONALS	12 (300) @ 45°	SOLID	WHITE - RIGHT YELLOW - LEFT	50' (15 m) C-C (LESS THAN 30MPH (50 km/h)) 75' (25 m) C-C (30 MPH (50 km/h) TO 45MPH (70 km/h)) 150' (45 m) C-C (OVER 45MPH (70 km/h))

FOR FURTHER DETAILS ON PAVEMENT MARKING REFER TO STANDARD SPECIFICATIONS FOR ROAD AND BRIDGE CONSTRUCTION AND STATE STANDARD 780001.

All dimensions are in inches (millimeters) unless otherwise shown.

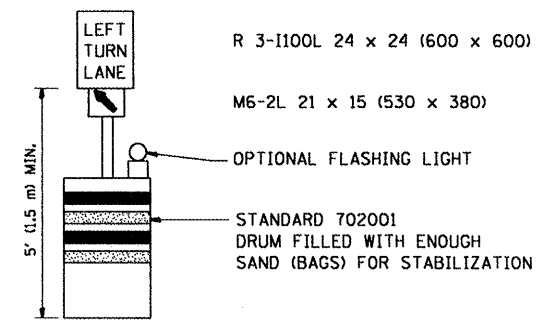
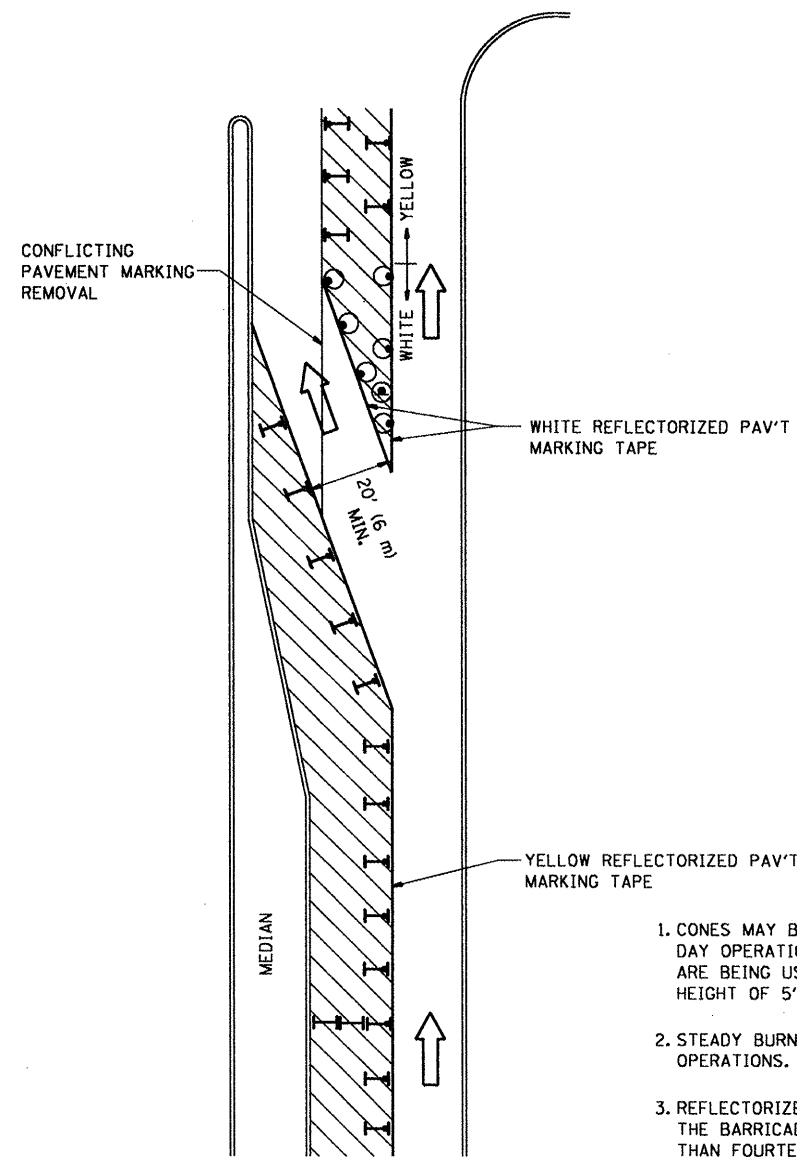
**STATE OF ILLINOIS
DEPARTMENT OF TRANSPORTATION**

**DISTRICT ONE
TYPICAL PAVEMENT MARKINGS**

SCALE: NONE SHEET NO. 1 OF 1 SHEETS STA. TO STA.

F.A. RTE.	SECTION	COUNTY	TOTAL SHEETS	SHEET NO.
VAR.	2009-025 PP	COOK	49	45
TC-13		CONTRACT NO. 60624		
FED. ROAD DIST. NO. 1 ILLINOIS FED. AID PROJECT				

FILE NAME =	USER NAME = smthkl	DESIGNED - EVERS	REVISED - T. RAMMACHER 10-27-94
getpwork\p\WIDOT\SMITHKL\d0125091\01st.dgn		DRAWN -	REVISED - A. HOUSEH 10-09-96
		CHECKED -	REVISED - A. HOUSEH 10-17-96
		DATE - 03-19-90	REVISED - T. RAMMACHER 01-06-00



GENERAL NOTES

1. CONES MAY BE SUBSTITUTED FOR BARRICADES OR DRUMS AT HALF THE SPACING DURING DAY OPERATIONS. CONES SHALL BE A MINIMUM OF 28 (710) IN HEIGHT. WHEN CONES ARE BEING USED, THE "LEFT TURN LANE" SIGN MAY BE SKID MOUNTED AT A MINIMUM HEIGHT OF 5' (1.5 m).
2. STEADY BURNING LIGHTS WILL NOT BE REQUIRED ON BARRICADES OR DRUMS FOR DAY OPERATIONS. ALL LIGHTS SHALL BE MONODIRECTIONAL.
3. REFLECTORIZED TEMPORARY PAVEMENT MARKING TAPE SHALL BE PLACED THROUGHOUT THE BARRICADED AREA OF EACH TURN BAY WHERE THE CLOSURE TIME IS GREATER THAN FOURTEEN DAYS.
4. THIS APPLICATION ALSO APPLIES WHEN WORK IS BEING PERFORMED IN THE RIGHT LANE(S) AND THE RIGHT TURN BAY IS TO REMAIN OPEN. UNDER THIS CONDITION, "RIGHT TURN LANE" R3-100 24 x 24 (600 x 600) AND M6-2R 21 x 15 (530 x 380) SHALL BE USED.
5. THESE CONTROLS SHALL SUPPLEMENT MAINLINE TRAFFIC CONTROL FOR LANE CLOSURES.
6. LONGITUDINAL DIMENSIONS MAY BE ADJUSTED TO FIT FIELD CONDITIONS.
7. FORM BT 725 IS REQUIRED.
8. TRAFFIC CONTROL AND PROTECTION AT TURN BAYS (TO REMAIN OPEN TO TRAFFIC) SHALL BE INCLUDED IN THE COST SPECIFIED TRAFFIC CONTROL STANDARDS OR ITEMS.

All dimensions are in inches (millimeters) unless otherwise shown.

LEGEND

- WORK AREA
- LANE OPEN TO TRAFFIC
- TYPE I OR II BARRICADE WITH STEADY BURN LIGHT
- DRUM WITH STEADY BURN LIGHT
- DRUM WITH SIGN (WITH OPTIONAL FLASHING LIGHT) SEE DETAIL
- TYPE I OR II CHECK BARRICADE WITH FLASHING LIGHT

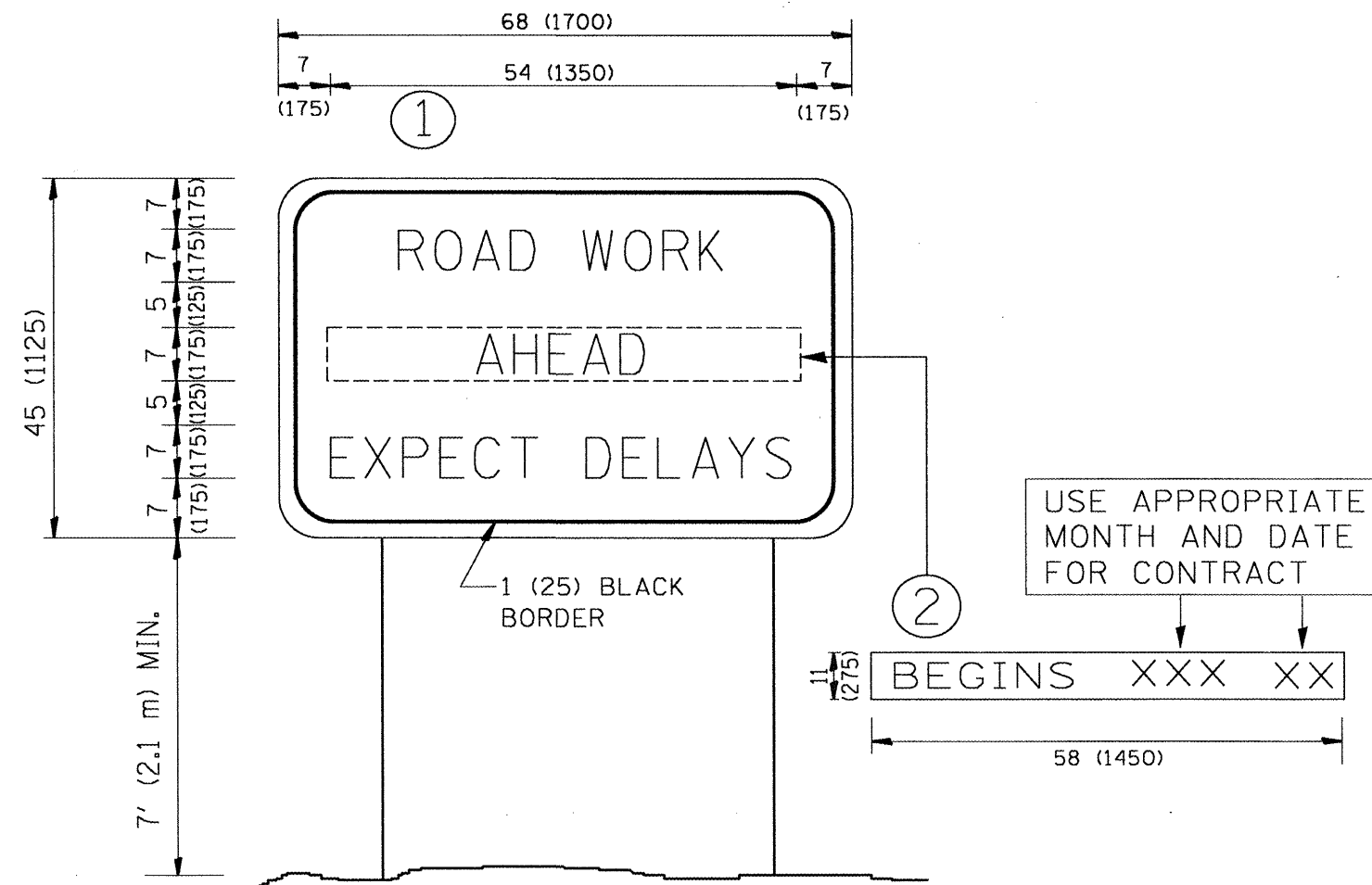
FILE NAME =	USER NAME = smsthk1	DESIGNED -	REVISED -T. RAMMACH:R 09-08-94
er\pwork\PWIDOT\SMITHKL\d0125091\DistStd.dgn		DRAWN -	REVISED - A. HOUSEH 11-07-95
		CHECKED -	REVISED - A. HOUSEH 10-12-96
		DATE -	REVISED -T. RAMMACH:R 01-06-00

**STATE OF ILLINOIS
DEPARTMENT OF TRANSPORTATION**

**TRAFFIC CONTROL AND PROTECTION AT TURN BAYS
(TO REMAIN OPEN TO TRAFFIC)**

SCALE: NONE SHEET NO. 1 OF 1 SHEETS STA. TO STA.

F.A. RTE.	SECTION	COUNTY	TOTAL SHEETS	SHEET NO.
VAR.	2009-025 PP	COOK	49	46
TC-14			CONTRACT NO. 60G24	
FED. ROAD DIST. NO. 1 ILLINOIS FED. AID PROJECT				



NOTES:

1. USE BLACK LETTERING ON ORANGE BACKGROUND.
2. ERECT SIGNS IN ADVANCE OF THE LOCATION FOR THE "ROAD CONSTRUCTION AHEAD" SIGN AT LOCATIONS AS DIRECTED BY THE ENGINEER.
3. ERECT SIGN ① WITH INSTALLED PANEL ② ONE WEEK PRIOR TO THE START OF CONSTRUCTION.
4. REMOVE PANEL ② SOON AFTER THE START OF CONSTRUCTION.
5. SEE SPECIAL PROVISION FOR "TEMPORARY INFORMATION SIGNING" FOR ADDITIONAL INFORMATION.
6. ONE SIGN ASSEMBLY EQUALS 25.70 SQ. FT. (2.3 SQ. M.)
7. SHALL BE PAID FOR AS TEMPORARY INFORMATION SIGNING.

ALL DIMENSIONS ARE IN INCHES (MILLIMETERS) UNLESS OTHERWISE SHOWN.

FILE NAME =	USER NAME = smthkl	DESIGNED -	REVISED - R. MIRS 09-15-97
ct:\pwork\PWIDOT\SMITHKL\d0125091\01st	td.dgn	DRAWN -	REVISED - R. MIRS 12-11-97
PLOT SCALE = 100.0000" / IN.	CHECKED -	REVISED - T. RAMMACHER 02-02-99	
PLOT DATE = 2/3/2009	DATE -	REVISED - C. JUCILIS 01-31-07	

**STATE OF ILLINOIS
DEPARTMENT OF TRANSPORTATION**

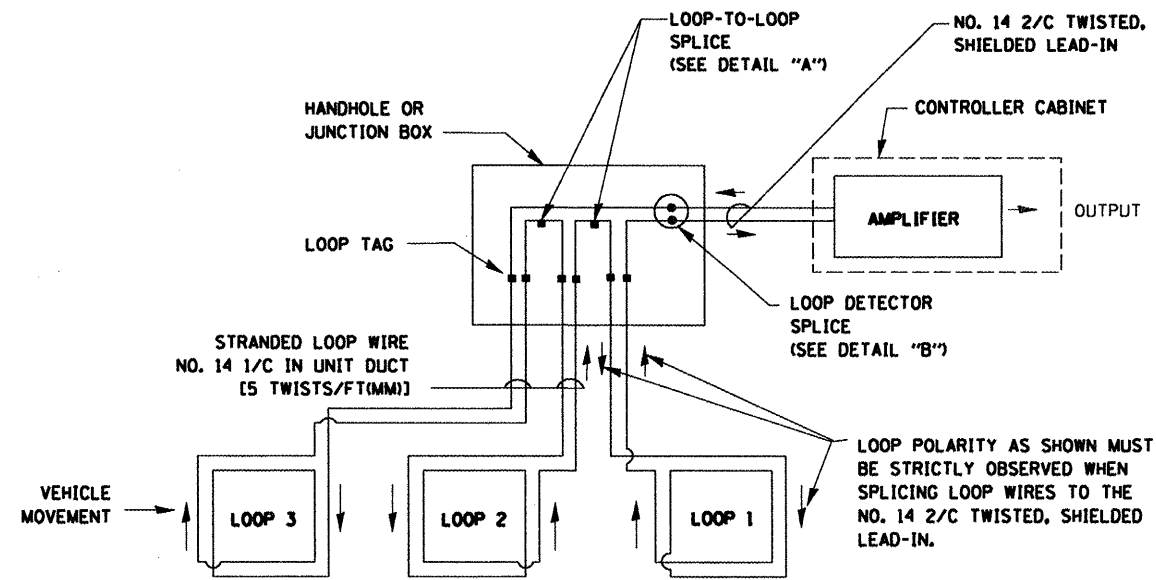
**ARTERIAL ROAD
INFORMATION SIGN**

SCALE: NONE SHEET NO. 1 OF 1 SHEETS STA. TO STA.

F.A. RTE. VAR.	SECTION	COUNTY	TOTAL SHEETS	SHEET NO.
	2009-025 PP	COOK	49	47
TC-22		CONTRACT NO. 60G24		
FED. ROAD DIST. NO. 1 ILLINOIS FED. AID PROJECT				

LOOP DETECTOR NOTES

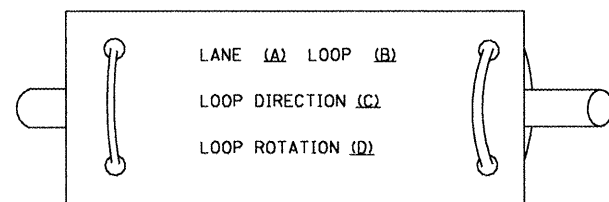
- EACH PAIR OF LOOP WIRES SHALL BE PLACED IN A SEPARATE UNIT DUCT FROM THE EDGE OF PAVEMENT TO THE HANDHOLE. SPACING BETWEEN THE HOLES DRILLED IN THE PAVEMENT SHALL NOT BE LESS THAN 6" (150 mm). UNIT DUCT SHALL BE INCLUDED IN THE COST OF THE LOOP WIRE.
- THE NUMBER OF LOOP TURNS SHALL BE AS RECOMMENDED BY THE AMPLIFIER MANUFACTURER. ALL ADJACENT SIDES OF THE LOOPS SHALL BE INSTALLED IN SUCH A WAY THAT THE CURRENT FLOW IS IN THE SAME DIRECTION TO REINFORCE ITS MAGNETIC FIELDS FOR SMALL VEHICLE DETECTION.
- EACH LOOP LEAD-IN SHALL BE IDENTIFIED AND PERMANENTLY TAGGED IN THE HANDHOLE. EACH LEAD-IN CABLE TAG SHALL INDICATE THE LOCATION OF THE LOOP, LOOP ROTATION (CLOCKWISE/COUNTERCLOCKWISE), LOOP LEAD-IN DIRECTION (IN OR OUT), LOOP CABLE NUMBER AND LOCATION IN CABINET, AND NUMBER OF TURNS IN THE DETECTOR LOOPS IN WATER PROOF INK AS INDICATED ON THE DISTRICT 1 STANDARD TRAFFIC SIGNAL DESIGN DETAIL. THE CONTRACTOR SHALL MARK LOOP LOCATIONS ON RECORD DRAWINGS AND PRESENT TO THE ENGINEER AFTER FINAL INSPECTION. LOOPS SHALL BE MARKED BY LANE AND LOOP NUMBER. SEE DETAIL BELOW.
- ALL LOOP CABLE SHALL BE FASTENED WITH PLASTIC TIE WRAP TO THE HANDHOLE HOOKS.
- IN ASPHALT PAVEMENT, LOOPS SHOULD BE PLACED IN THE BINDER AND DIVEHOLES MARKED AT THE CURB WITH A SAW-CUT. THE SAW-CUT SHALL BE CUT IN ACCORDANCE WITH LOCAL AND E.P.A. DUST CONTROL REQUIREMENTS. DETECTOR LOOP(S) SHALL NOT BE INSTALLED IN WET CONDITIONS AND THE SAW-CUTS MUST BE FREE OF DEBRIS AND RESIDUE SUCH AS DUST AND WATER WHICH IS TO BE ACHIEVED BY THE USE OF COMPRESSED AIR, WIRE BRUSHING AND HEAT DRYING ACCORDING TO SEALANT MANUFACTURER REQUIREMENTS. THE DETECTOR WIRE SHALL BE HELD IN PLACE BY THE USE OF FORM WEDGES. WEDGES SHALL BE SPACED NO MORE THAN 18" (450 mm) APART.
- LOOP SPLICES SHALL BE SOLDERED USING A SOLDERING IRON. BLOW TORCHES OR OTHER DEVICES WHICH OXIDIZE COPPER CABLE SHALL NOT BE ALLOWED FOR SOLDERING OPERATIONS. SEE DETAIL BELOW RIGHT.
- PERFORMED DETECTOR LOOPS SHALL BE USED, AS SHOWN ON THE PLANS, WHERE NEW CONCRETE PAVEMENT IS PROPOSED. THE INSTALLATION OF PREFORMED LOOPS SHALL BE IN ACCORDANCE WITH THE DISTRICT 1 SPECIFICATIONS OR AS DIRECTED BY THE ENGINEER.



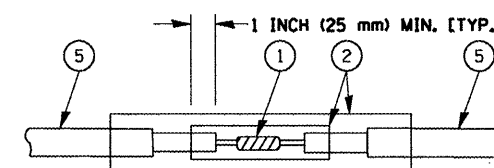
DETECTOR LOOP WIRING SCHEMATIC

- LOOPS SHALL BE SPLICED IN SERIES.
- SAW-CUTS SHALL BE A MINIMUM WIDTH OF 5/16" (8 mm).
- SAW-CUT DEPTHS SHALL BE 3" (75 mm), IF IN CONCRETE. THE SAW-CUT DEPTH SHALL BE TO THE TOP OF THE REINFORCEMENT.
- LOOP CORNERS SHALL BE DRILLED WITH A 2" (50 mm) DIAMETER CORE.

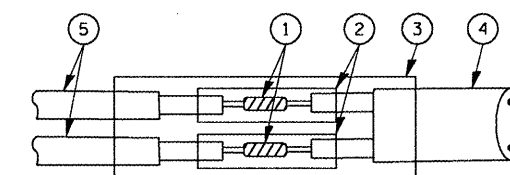
LOOP LEAD-IN CABLE TAG



- LANE 1 IS THE LANE CLOSEST TO THE CENTERLINE OF THE ROADWAY
- LOOP #1 IS THE LOOP IN THE LANE CLOSEST TO THE INTERSECTION.
- LABEL LOOP CABLE "IN" OR LOOP CABLE "OUT".
- LABEL LOOP CABLE CLOCKWISE OR LOOP CABLE COUNTERCLOCKWISE.



**DETAIL "A"
LOOP-TO-LOOP SPLICE**



**DETAIL "B"
LOOP-TO-CONTROLLER SPLICE**

LOOP DETECTOR SPLICE

- WESTERN UNION SPLICE SOLDERED WITH ROSIN CORE FLUX. ALL EXPOSED SURFACES OF THE SOLDER SHALL BE SMOOTH.
- WCSMW 30/100 HEAT SHRINK TUBE, MINIMUM LENGTH 3" (75 mm), UNDERWATER GRADE.
- WCS 200/750 HEAT SHRINK TUBE, MINIMUM LENGTH 6" (150 mm), UNDERWATER GRADE.
- NO. 14 2/C TWISTED, SHIELDED CABLE.
- LOOP CONDUCTOR WITH FLEXIBLE PLASTIC TUBE.

FILE NAME =	USER NAME = smthkl	DESIGNED - D.A.D.	REVISED - 11-12-01
gs:\pw-work\PWIDOT\SMTHKL\d0125091\01st.dgn		DRAWN - R.W.P.	REVISED - BUR. TRAFFIC 01-01-02
	PLOT SCALE = 100.0000' / IN.	CHECKED - D.A.Z.	REVISED -
	PLOT DATE = 2/3/2009	DATE - 05-30-00	REVISED -

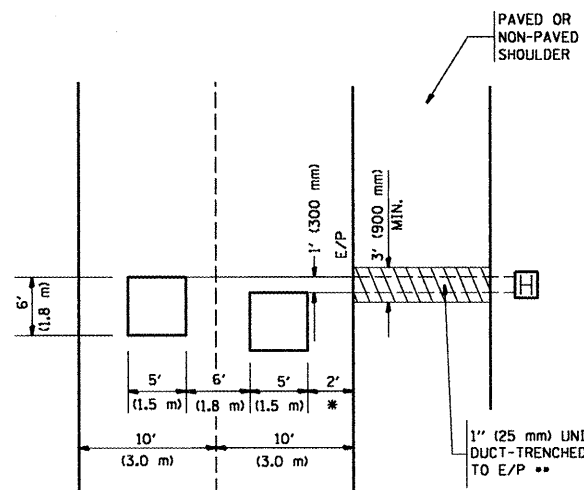
**STATE OF ILLINOIS
DEPARTMENT OF TRANSPORTATION**

DISTRICT ONE	
STANDARD TRAFFIC SIGNAL DESIGN DETAILS	
SCALE: NONE	SHEET NO. 1 OF 4 SHEETS STA. TO STA.

F.A. RTE.	SECTION	COUNTY	TOTAL SHEETS	SHEET NO.
VAR.	2009-025 PP	COOK	49	48
TS-05			CONTRACT NO. 60G24	
<small>FED. ROAD DIST. NO. 1 ILLINOIS FED. AID PROJECT</small>				

LOOPS NEXT TO SHOULDERS

PROVIDE A PAVEMENT REPLACEMENT NOTE WHICH SHOULD EQUAL 3' (900 mm) X WIDTH OF PAVED SHOULDER.

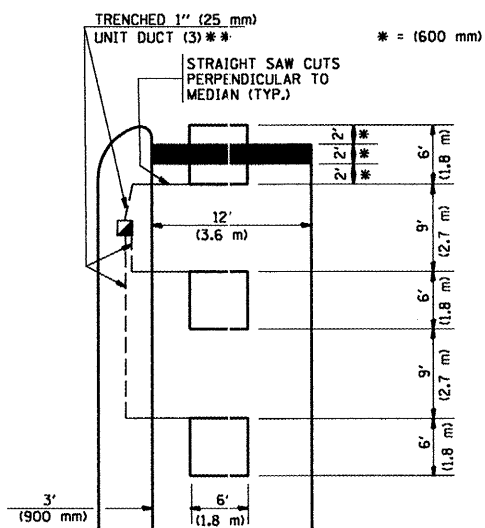


* = (600 mm)

** UNIT DUCT IS TO BE SHOWN ON PLAN SHEETS BUT SHALL NOT BE INCLUDED IN THE PAY ITEMS.

**LEFT TURN LANES WITH MEDIANS
VOLUME DENSITY ("FAR OUT" DETECTION)
ON SAME APPROACH
(PROTECTED / PERMITTED LEFT TURN PHASING)**

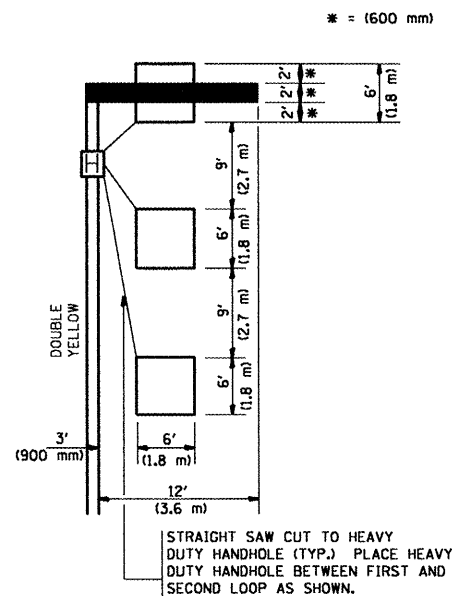
HANDHOLE LOCATION MAY VARY DEPENDING ON GEOMETRICS AND DESIGN OF TRAFFIC SIGNALS. HEAVY-DUTY HANDHOLES TO BE USED WHEN THE MEDIAN IS MOUNTABLE. REFER TO STANDARD 814001 TO ENSURE THAT HANDHOLE FITS IN MEDIAN.



** UNIT DUCT IS TO BE SHOWN ON PLAN SHEETS BUT SHALL NOT BE INCLUDED IN THE PAY ITEMS.

NOTE: DUAL LEFT TURNS NOT SHOWN REFER TO PLAN SHEET FOR DETECTOR LOOP REPLACEMENT

**LEFT TURN LANES WITHOUT MEDIANS
VOLUME DENSITY ("FAR OUT" DETECTION)
ON SAME APPROACH
(PROTECTED / PERMITTED LEFT TURN PHASING)**



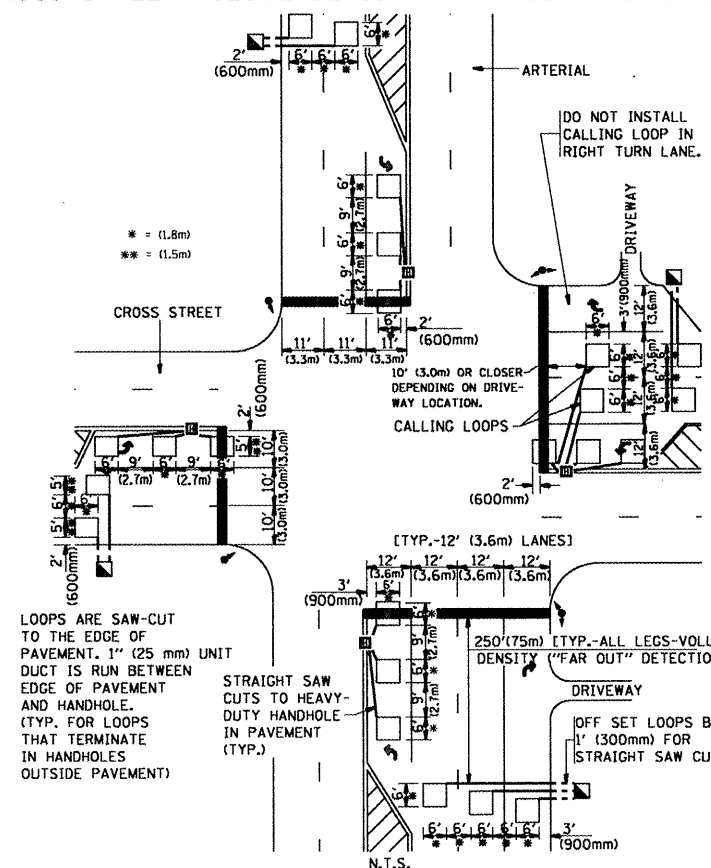
NOTE: DUAL LEFT TURNS NOT SHOWN REFER TO PLAN SHEET FOR DETECTOR LOOP REPLACEMENT

NOTES:

VEHICLES LOOP DETECTORS

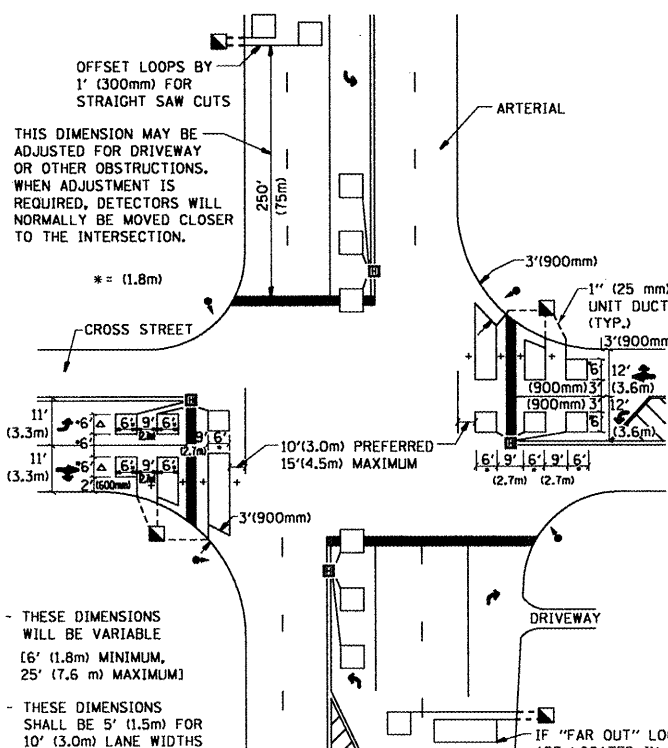
- * ALL LEAD IN CABLE SHALL BE TWO CONDUCTOR NO. 14 TWISTED, SHIELDED.
- * EACH DETECTOR LOOP SHALL HAVE ITS OWN SAW CUT FROM THE LOOP TO THE EDGE OF PAVEMENT OR TO A HANDHOLE IN THE PAVEMENT.
- * EACH DETECTOR LOOP SHALL HAVE ITS OWN ONE INCH (25 mm) UNIT DUCT BETWEEN THE EDGE OF PAVEMENT AND THE FIRST HANDHOLE OR JUNCTION BOX. EACH UNIT DUCT RUN SHALL BE SHOWN ON THE PLANS BY THE DESIGNER, BUT SHALL NOT BE PAID FOR SEPARATELY. THIS ITEM IS INCIDENTAL TO THE PAY ITEM FOR DETECTOR LOOPS.
- * ONE DIMENSION OF ALL DETECTOR LOOPS SHALL BE SIX FEET (1.8 m)
- * EACH LANE OF NON-LOCKING, PRESENCE DETECTION AND EACH LANE OF A DOUBLE LEFT TURN LANE REQUIRES A SEPARATE INDUCTIVE LOOP DETECTOR AND LEAD IN CABLE.
- * WHEN NON-LOCKING, PRESENCE DETECTION IS USED, MORE THAN ONE LOOP PER LANE IS REQUIRED BEHIND THE STOP BAR (i.e. 1-1/2, 1-3/4, 2).
- * WHEN SYSTEM LOOPS ARE REQUIRED ON AN APPROACH OF AN INTERSECTION, THE LOOPS USED FOR VOLUME DENSITY AND INTERSECTION TIMING SHALL ALSO BE USED AS SYSTEM DETECTORS. EACH ONE OF THESE TYPE OF LOOPS REQUIRES A SEPARATE TWO CONDUCTOR NO. 14 TWISTED SHIELDED CABLE AND A SEPARATE INDUCTIVE LOOP DETECTOR WHEN NEW CONTROLLERS ARE UTILIZED. THE DESIGNER SHALL LABEL THESE TYPES OF LOOPS AS "INTERSECTION AND SAMPLING (SYSTEM) DETECTORS" ON THE SIGNAL LAYOUT, THE INTERCONNECT PLAN AND THE SYSTEM CABLE PLAN. WHEN AN EXISTING CONTROLLER IS UTILIZED FOR THIS TYPE OF DETECTION, THE PAY ITEM "INDUCTIVE LOOP DETECTOR WITH SYSTEM OUTPUT" SHOULD BE USED.

**ARTERIAL-VOLUME DENSITY ("FAR OUT" DETECTION)
CROSS STREET-VOLUME DENSITY ("FAR OUT" DETECTION)**



**DETAIL 1
N.T.S.**

**ARTERIAL-VOLUME DENSITY ("FAR OUT" DETECTION)
CROSS STREET-NON VOLUME DENSITY ("UPTIGHT" PRESENCE DETECTION)**



**DETAIL 2
N.T.S.**

PLACEMENT OF DETECTORS

THE FOLLOWING FIGURES REPRESENT THE MOST COMMON DETECTOR LOOP LOCATIONS AND SIZES. ADJUSTMENTS WILL BE NECESSARY FOR SPECIFIC GEOMETRIC CONSIDERATIONS.

LOCATIONS AND DIMENSIONS OF DETECTOR LOOPS ARE REQUIRED ON ALL SIGNAL LAYOUT PLAN SHEETS.

"FAR OUT" DETECTION REFERS TO LOCKING, PRESENCE TYPE DETECTION LOCATED IN THRU LANES, RIGHT TURN LANES, AND RIGHT TURN LANE TAPER AREAS (IF APPLICABLE), USUALLY 250' (75 m) IN ADVANCE OF STOP BARS. "UPTIGHT" DETECTION REFERS TO NON-LOCKING PRESENCE TYPE DETECTION LOCATED IN ALL LANES AND 10'-15' (3.0 m-4.5 m) BEHIND THE CROSSING STREET'S EDGE OF PAVEMENT EXTENDED.

NOTE:

ALL DETAILS AND NOTES SHOWN ARE FROM THE I.D.O.T. DISTRICT 1 TRAFFIC SIGNAL DESIGN GUIDELINES DATED JANUARY 1995

THIS DRAWING HAS BEEN PREPARED TO ASSIST THE RESIDENT ENGINEER FOR ALL ROADWAY RESURFACING OR S.M.A.R.T. PROJECTS WHERE THE DIMENSIONS ARE NOT SHOWN ON THE PLANS AND THE FINAL LOCATIONS FOR CROSSWALKS OR STOP BARS ARE NOT DETERMINED.

**STATE OF ILLINOIS
DEPARTMENT OF TRANSPORTATION**

**DISTRICT 1 - DETECTOR LOOP INSTALLATION
DETAILS FOR ROADWAY RESURFACING**

F.A. RTE.	SECTION	COUNTY	TOTAL SHEETS	SHEET NO.
VAR.	2009-025 PP	COOK	49	49
TS-07			CONTRACT NO. 60G24	
FED. ROAD DIST. NO. 1 ILLINOIS FED. AID PROJECT				

SCALE: NONE SHEET NO. 1 OF 1 SHEETS STA. TO STA.