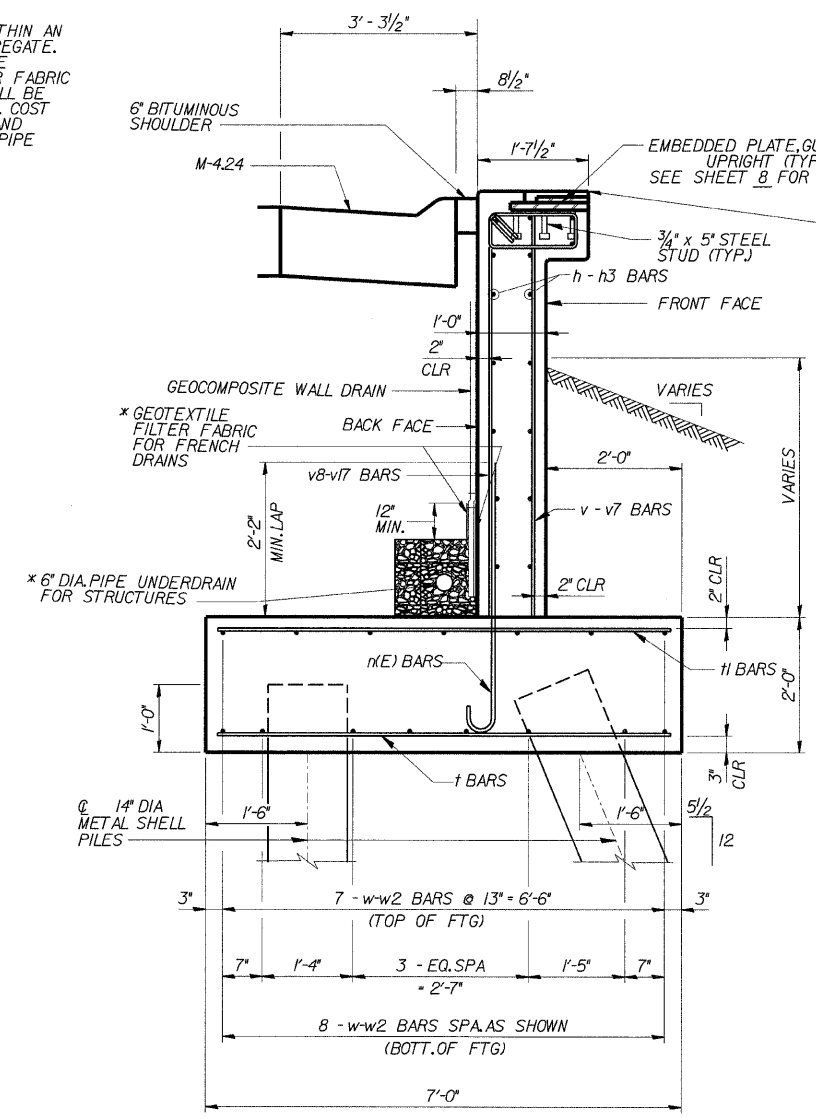


*SHEET (202.6 - 2P, ETC, 1415 & 1517) R-7
CONTRACT NUMBER 62408

REINFORCEMENT SCHEDULE

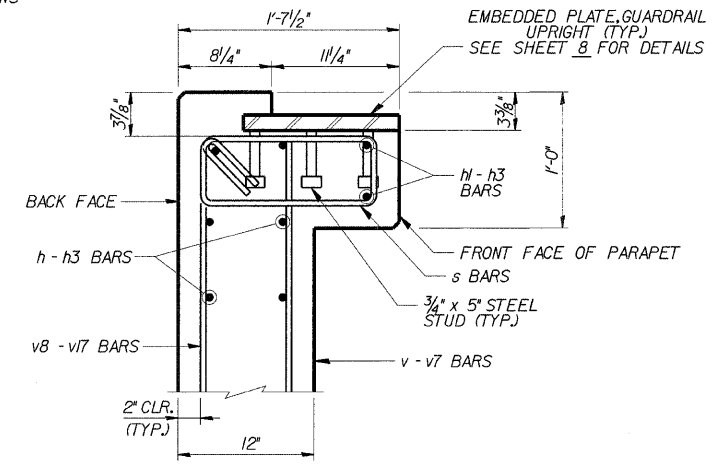
| BAR | NO. | SIZE | LENGTH | SHAPE |
|------|-----|------|---------|-------|
| v | 25 | #4 | 4'-6" | — |
| v1 | 15 | #4 | 4'-1" | — |
| v2 | 15 | #4 | 5'-9" | — |
| v3 | 16 | #4 | 5'-5" | — |
| v4 | 15 | #4 | 5'-0" | — |
| v5 | 8 | #4 | 3'-9" | — |
| v6 | 8 | #4 | 3'-4" | — |
| v7 | 8 | #4 | 2'-11" | — |
| v8 | 10 | #5 | 5'-1" | — |
| v9 | 11 | #5 | 4'-8" | — |
| v10 | 15 | #5 | 6'-5" | — |
| v11 | 23 | #5 | 6'-0" | — |
| v12 | 21 | #5 | 5'-7" | — |
| v13 | 22 | #5 | 5'-2" | — |
| v14 | 11 | #5 | 4'-10" | — |
| v15 | 11 | #5 | 4'-4" | — |
| v16 | 11 | #5 | 3'-11" | — |
| v17 | 11 | #5 | 3'-4" | — |
| h | 8 | #4 | 14'-8" | — |
| h1 | 12 | #4 | 29'-8" | — |
| h2 | 14 | #4 | 31'-8" | — |
| h3 | 28 | #4 | 25'-9" | — |
| n(E) | 146 | #5 | 4'-6" | — |
| s(E) | 146 | #4 | 4'-6" | — |
| t | 128 | #4 | 6'-8" | — |
| t1 | 132 | #5 | 6'-8" | — |
| w | 15 | #4 | 14'-8" | — |
| w1 | 15 | #4 | 31'-11" | — |
| w2 | 30 | #4 | 33'-10" | — |
| w3 | 8 | #4 | 8'-10" | — |
| w4 | 8 | #4 | 8'-6" | — |

* 6" PERFORATED PIPE SHALL BE SITUATED WITHIN AN APPROXIMATE 2' X 2' BLOCK OF COARSE AGGREGATE. THE BLOCK OF COARSE AGGREGATE SHALL BE WRAPPED COMPLETELY IN GEOTEXTILE FILTER FABRIC FOR FRENCH DRAINS. A 1'-6" MINIMUM LAP SHALL BE USED WHERE THE FABRIC MUST BE LAPPED. COST OF PERFORATED PIPE, COARSE AGGREGATE AND GEOTEXTILE FILTER FABRIC IS INCLUDED IN PIPE UNDERDRAINS FOR STRUCTURES 6'.

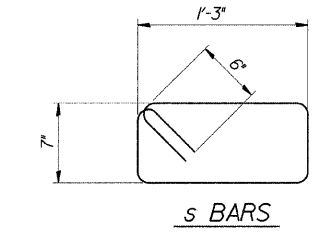


TYPICAL SECTION

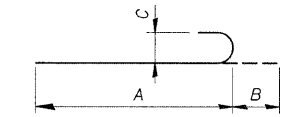
* 6" DIA. PERFORATED PIPE SHALL BE SITUATED WITHIN AN APPROXIMATE 2' X 2' BLOCK OF COARSE AGGREGATE. THE BLOCK OF COARSE AGGREGATE SHALL BE WRAPPED COMPLETELY IN GEOTEXTILE FILTER FABRIC FOR FRENCH DRAINS. A 1'-6" MINIMUM LAP SHOULD BE USED WHERE THE FABRIC MUST BE LAPPED. COST OF PERFORATED PIPE, COARSE AGGREGATE, AND GEOTEXTILE FILTER FABRIC IS INCLUDED IN PIPE UNDERDRAINS FOR STRUCTURES 6'.



PARAPET DETAIL



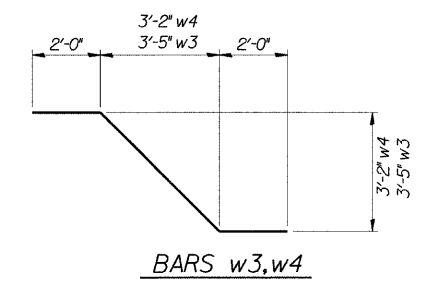
s BARS



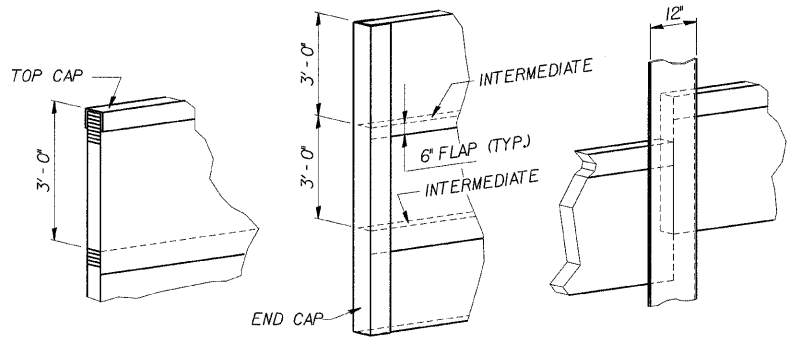
REINFORCEMENT BARS DESIGNATED (E) SHALL BE EPOXY COATED

| BAR | A | B | C |
|------|--------|----|----|
| v8 | 4'-6" | 7" | 5" |
| v9 | 4'-1" | 7" | 5" |
| v10 | 5'-10" | 7" | 5" |
| v11 | 5'-5" | 7" | 5" |
| v12 | 5'-0" | 7" | 5" |
| v13 | 4'-7" | 7" | 5" |
| v14 | 4'-3" | 7" | 5" |
| v15 | 3'-9" | 7" | 5" |
| v16 | 3'-4" | 7" | 5" |
| v17 | 2'-11" | 7" | 5" |
| n(E) | 3'-9" | 7" | 5" |

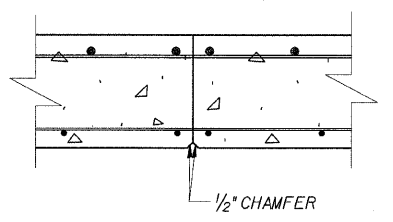
v9 - v17 & n(E) BARS



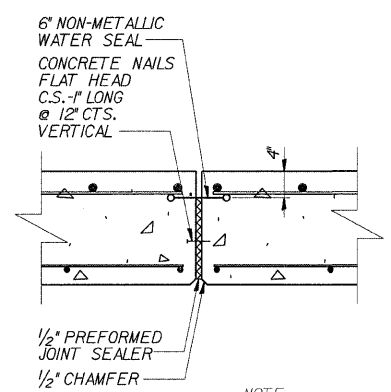
BARS w3, w4



GEOCOMPOSITE WALL DRAIN DETAILS



CONSTRUCTION JOINT DETAIL



EXPANSION JOINT DETAIL

NOTE:
6" NON-METALLIC WATER SEAL AND PREFORMED JOINT SEALER SHALL BE INCLUDED IN THE COST OF CONCRETE STRUCTURES.

s:\Dept\Structures\301099 190 94-retwall\ILL 190 194\RAMPK\DGFILES\02-06-RK\plan.dgn

| | |
|----------|-----|
| DESIGNED | CMF |
| CHECKED | LTX |
| DRAWN | DPW |
| CHECKED | JMM |

DLZ 85 W. Algonquin Rd. Ste. 220
Arlington Heights IL 60005

| REVISIONS | |
|-----------|------|
| NAME | DATE |
| | |
| | |

**RETAINING WALL RAMP K
ELEVATION (REINF)**
I-90/94 KENNEDY EXPRESSWAY
(HUBBARDS CAVE TO I-290)
SECT. (202.6 - 2P, ETC, 1415 & 1517) R-7
STATION 1+54.36, 33.5' RT TO 2+63.20, 37.7' RT
(RAMP F BASELINE)
COOK COUNTY
STRUCTURE NUMBER 016-W809