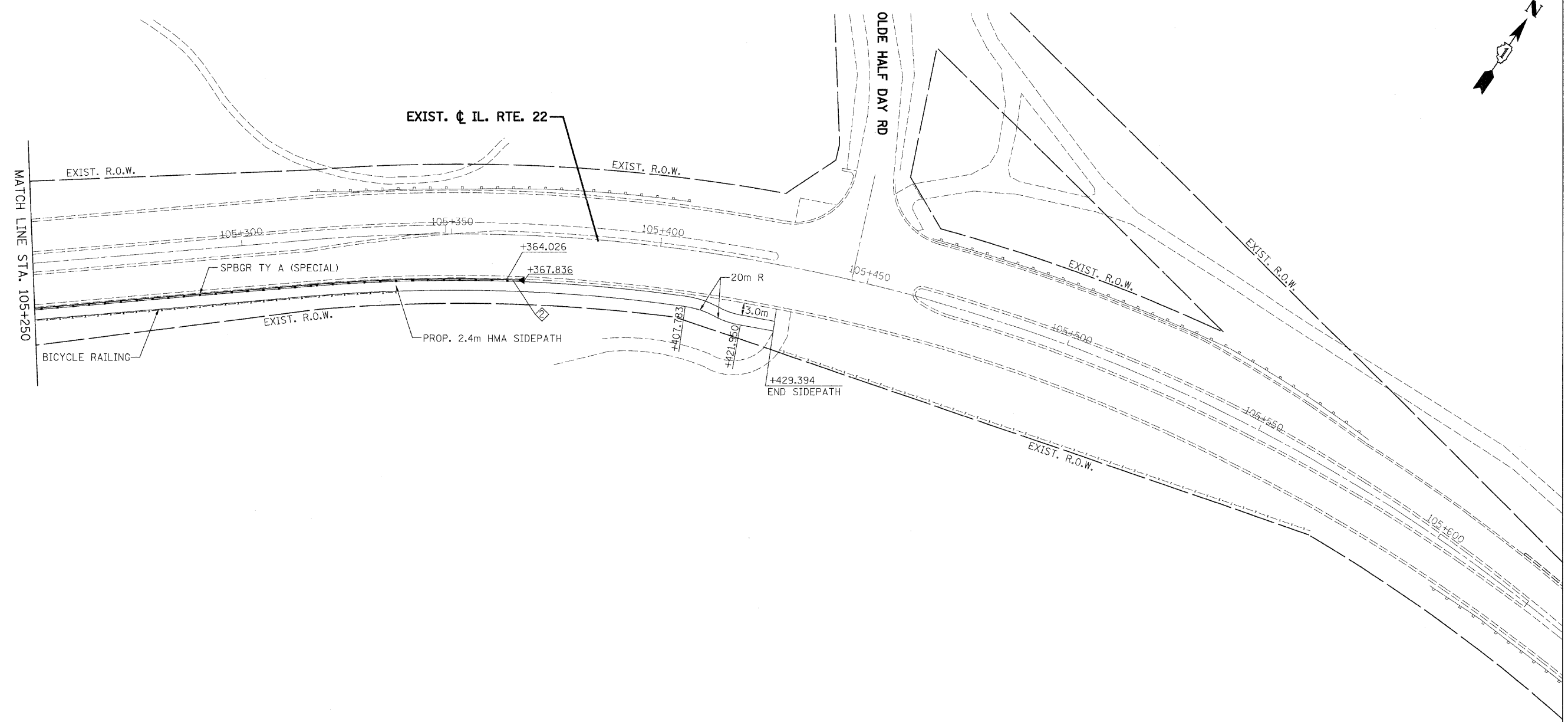
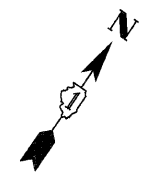


F.A.P. RTE.	SECTION	COUNTY	TOTAL SHEETS	SHEET NO.
337	20R-6	LAKE	149	43
STA. 104+900		TO STA. 105+250		
FED. ROAD DIST. NO.		ILLINOIS FED. AID PROJECT		
CONTRACT NO. 62519				



P:\Lisle\DOT\917\A0\Drawings\RDWY\MI\Shts\Rd\S_PP_02a.dgn
 P:\Lisle\Large.plt
 2/5/2009 5:09:44 PM
 hkoepfen(Rdwy-Lisle)



- ◆ TRAFFIC BARRIER TERMINAL, TYPE 1 (SPECIAL) TANGENT
- ◆ TRAFFIC BARRIER TERMINAL, TYPE 2
- ◆ TRAFFIC BARRIER TERMINAL, TYPE 5
- ◆ TRAFFIC BARRIER TERMINAL, TYPE 6

REVISIONS	
NAME	DATE

ILLINOIS DEPARTMENT OF TRANSPORTATION
 FAP ROUTE 337 (IL ROUTE 22)

PLAN & PROFILE
 STA. 105+250 TO STA. 105+450

SCALE: VERT. 1:50
 HORIZ. 1:500
 DATE: 1/28/2009

DRAWN BY: TCK
 CHECKED BY: DTH