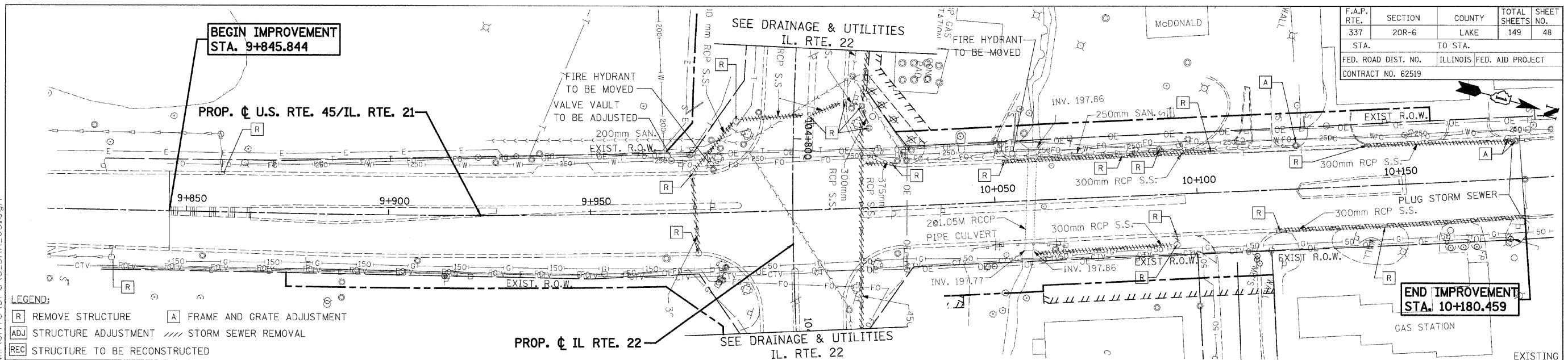
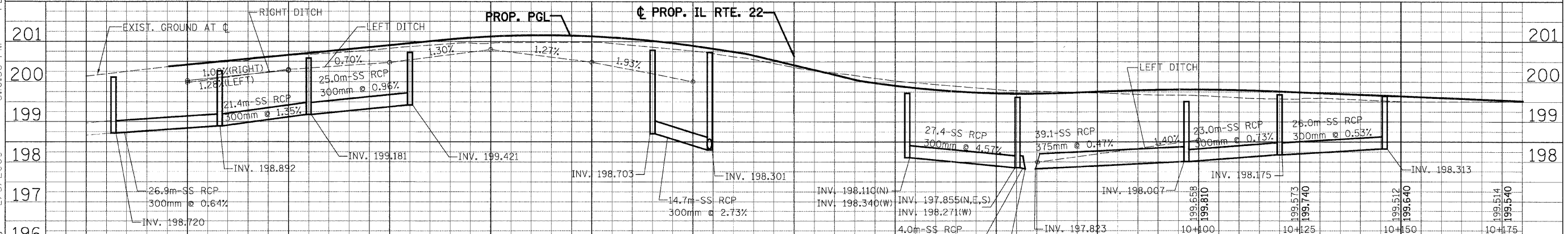
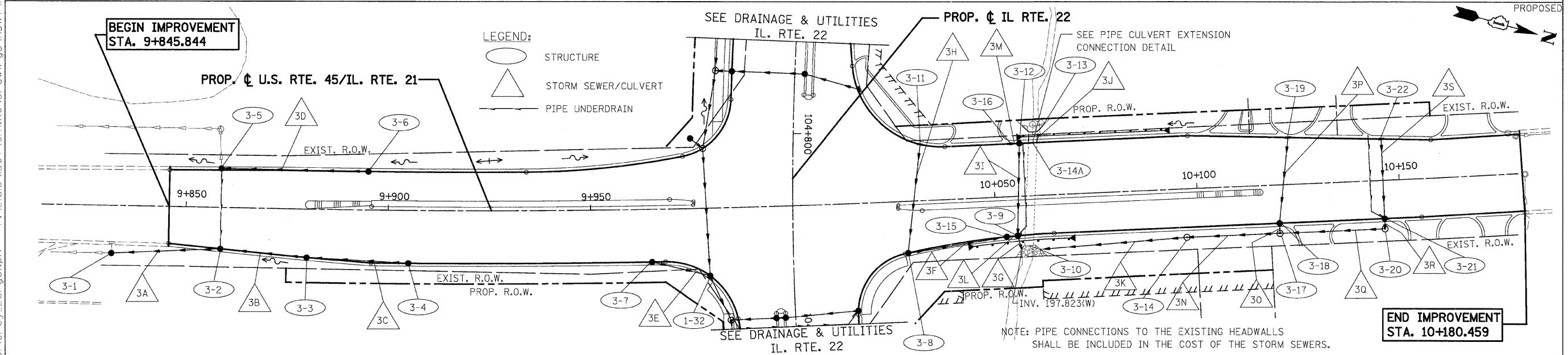


F.A.P. RTE.	SECTION	COUNTY	TOTAL SHEETS	SHEET NO.
337	20R-6	LAKE	149	48
STA.	TO STA.			
	ILLINOIS FED. AID PROJECT			
CONTRACT NO. 62519				



- LEGEND:
- [R] REMOVE STRUCTURE
  - [A] FRAME AND GRATE ADJUSTMENT
  - [ADJ] STRUCTURE ADJUSTMENT
  - [REC] STRUCTURE TO BE RECONSTRUCTED
  - STORM SEWER REMOVAL



REVISONS	NAME	DATE

ILLINOIS DEPARTMENT OF TRANSPORTATION  
 FAP ROUTE 337 (IL ROUTE 22)  
 DRAINAGE & UTILITIES  
 U.S. RTE. 45/IL ROUTE 21  
 VERT. 1:50  
 SCALE: HORIZ. 1:500  
 DATE: 1/28/2009  
 DRAWN BY: TCK  
 CHECKED BY: DTH

koeppen(Rdwy\_Lisle)  
 2/5/2009 5:03:38 PM  
 P:\Lisle\DOT\9171\AO\Drawings\RDWY\MIS\Shfts\Draw\S-DRA\_03.dgn  
 PDF(Grey\_Large).pht  
 PATRICK ENGINEERING INC. Lisle, ILLINOIS