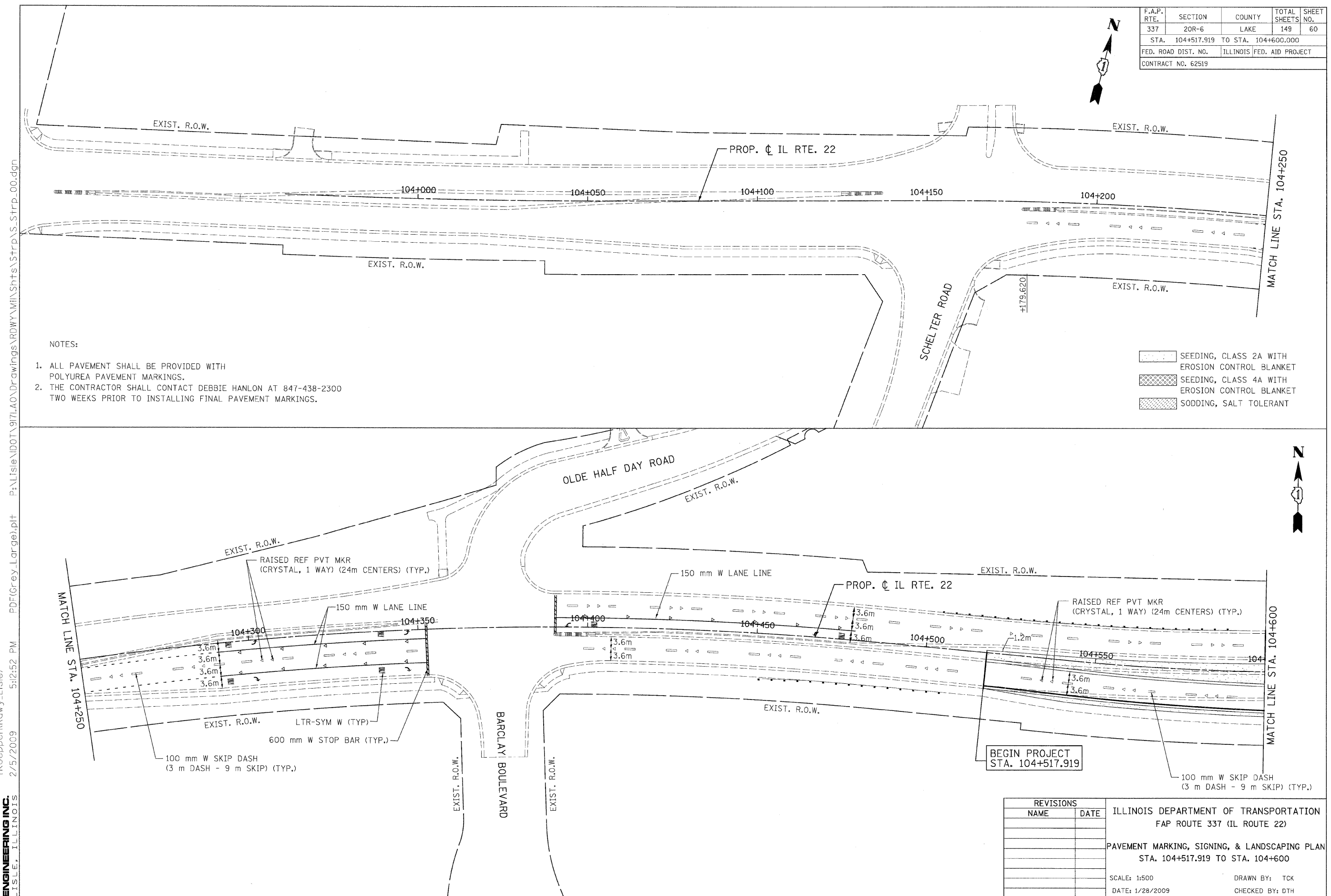


F.A.P. RTE.	SECTION	COUNTY	TOTAL SHEETS	SHEET NO.
337	20R-6	LAKE	149	60
STA. 104+517.919 TO STA. 104+600.000				
FED. ROAD DIST. NO.		ILLINOIS FED. AID PROJECT		
CONTRACT NO. 62519				



NOTES:

1. ALL PAVEMENT SHALL BE PROVIDED WITH POLYUREA PAVEMENT MARKINGS.
2. THE CONTRACTOR SHALL CONTACT DEBBIE HANLON AT 847-438-2300 TWO WEEKS PRIOR TO INSTALLING FINAL PAVEMENT MARKINGS.

- SEEDING, CLASS 2A WITH EROSION CONTROL BLANKET
- SEEDING, CLASS 4A WITH EROSION CONTROL BLANKET
- SODDING, SALT TOLERANT

tkoeppe(Rdwy-Lisle) 2/5/2009 5:25:52 PM PDF(Grey_Large).plt P:\Lisle\DOT\971\AO\Drawings\RDWY\MIn\Shfts\Strp\S.Strp_00.dgn



BEGIN PROJECT STA. 104+517.919

REVISIONS	
NAME	DATE

ILLINOIS DEPARTMENT OF TRANSPORTATION
 FAP ROUTE 337 (IL ROUTE 22)
 PAVEMENT MARKING, SIGNING, & LANDSCAPING PLAN
 STA. 104+517.919 TO STA. 104+600
 SCALE: 1:500
 DATE: 1/28/2009
 DRAWN BY: TCK
 CHECKED BY: DTH