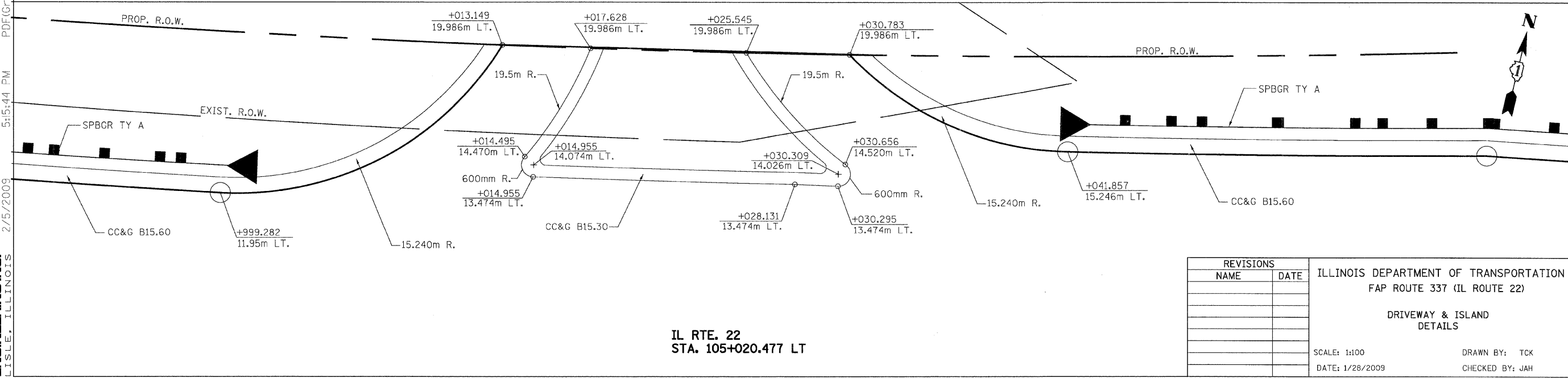
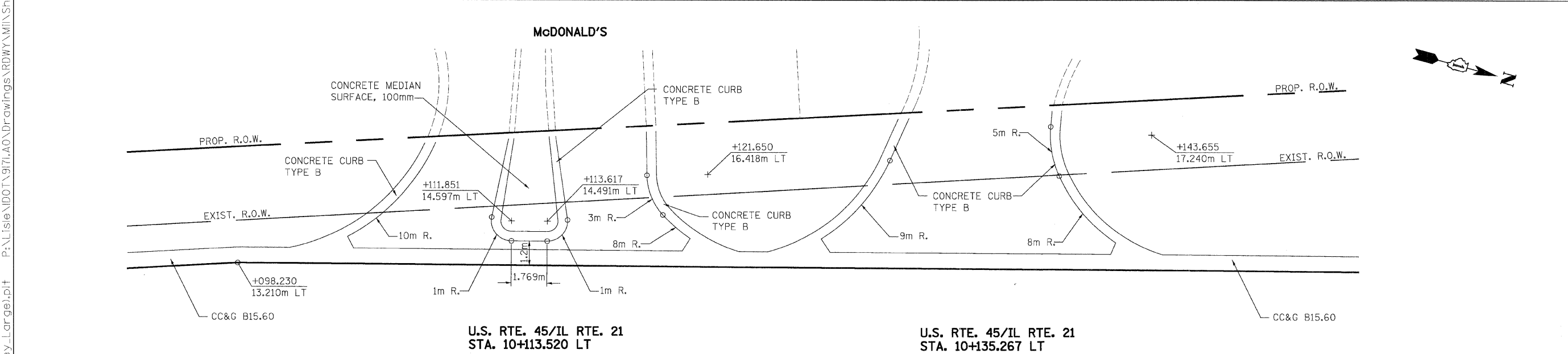
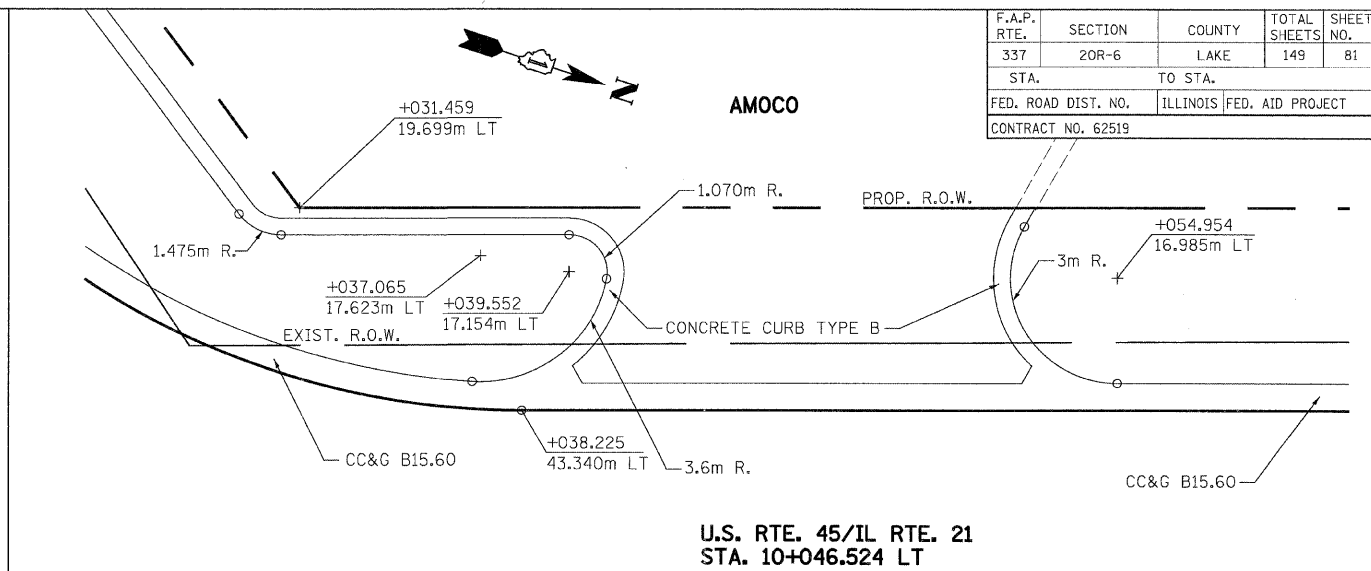
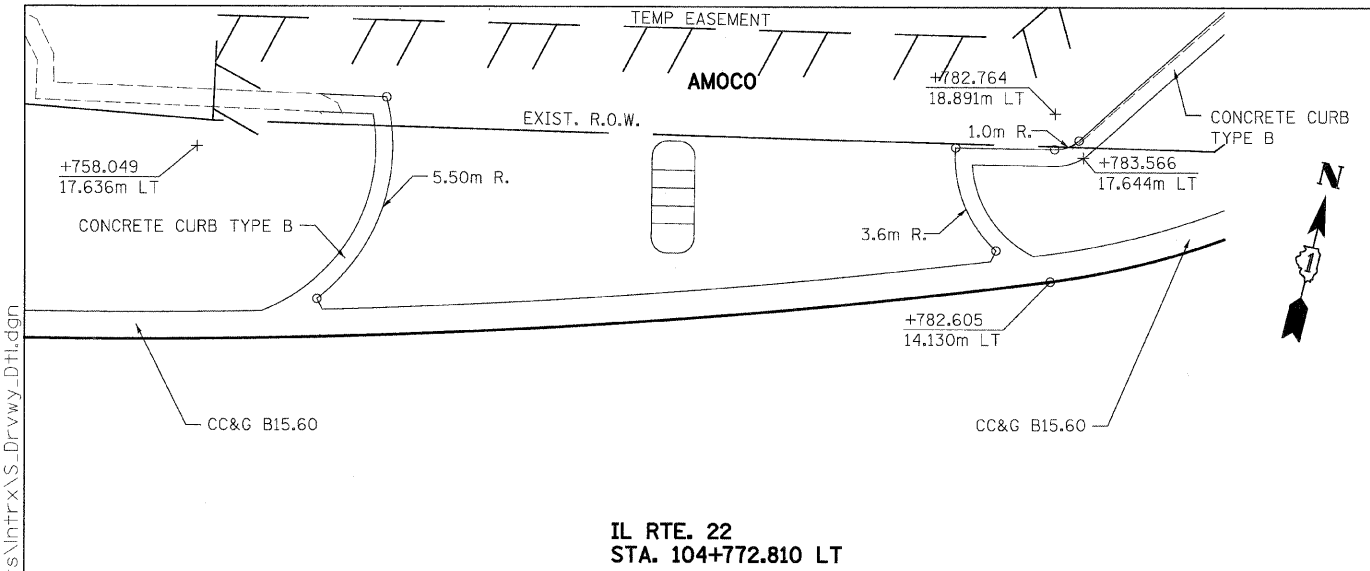


F.A.P. RTE.	SECTION	COUNTY	TOTAL SHEETS	SHEET NO.
337	20R-6	LAKE	149	81
STA.	TO STA.			
	ILLINOIS FED. AID PROJECT			
CONTRACT NO. 62519				



P:\Lislie\DOT\9171\A0\Drawings\RDWY\MIS\Shots\IntrX\S_Drvwy_Dtl.dgn
 PDF(Grey_Large).plt
 P:\Lislie\DOT\9171\A0\Drawings\RDWY\MIS\Shots\IntrX\S_Drvwy_Dtl.dgn
 5:15:44 PM
 koeppen(Rdwy_Lislie)
 2/5/2008
PATRICK ENGINEERING INC.
 LISLIE, ILLINOIS

REVISIONS	
NAME	DATE

ILLINOIS DEPARTMENT OF TRANSPORTATION
 FAP ROUTE 337 (IL ROUTE 22)
 DRIVEWAY & ISLAND
 DETAILS
 SCALE: 1:100
 DATE: 1/28/2009
 DRAWN BY: TCK
 CHECKED BY: JAH