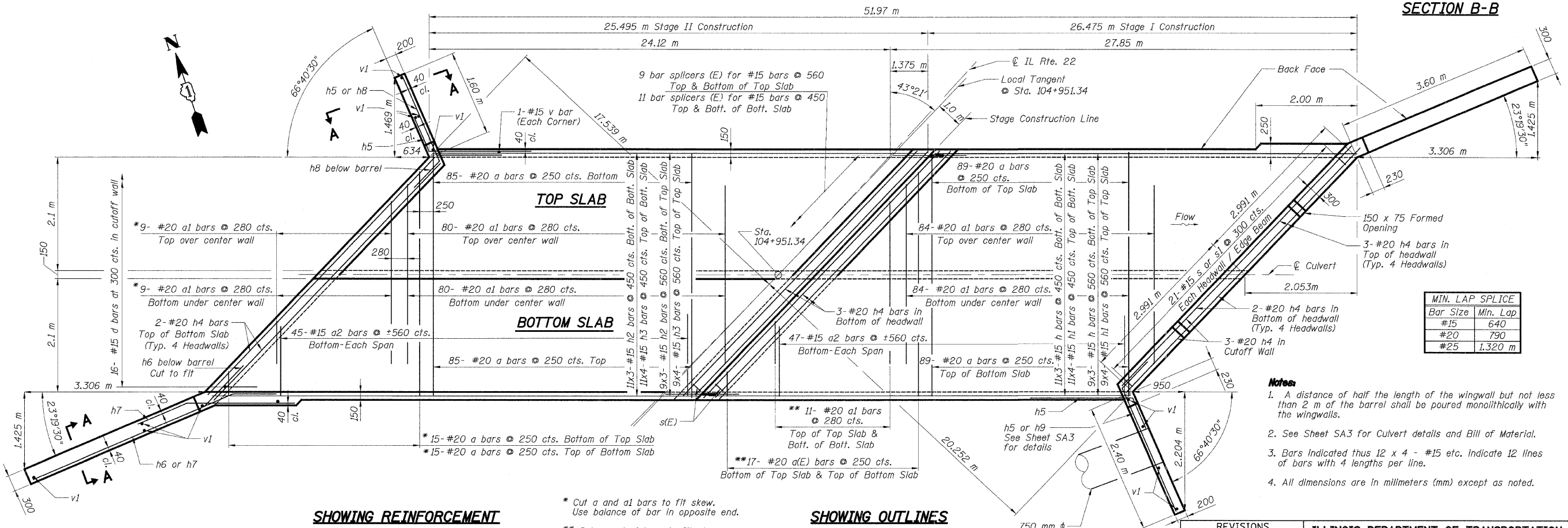
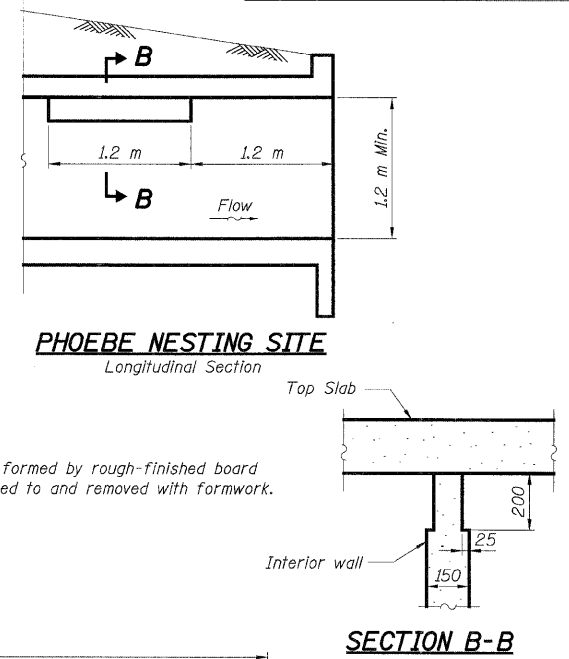
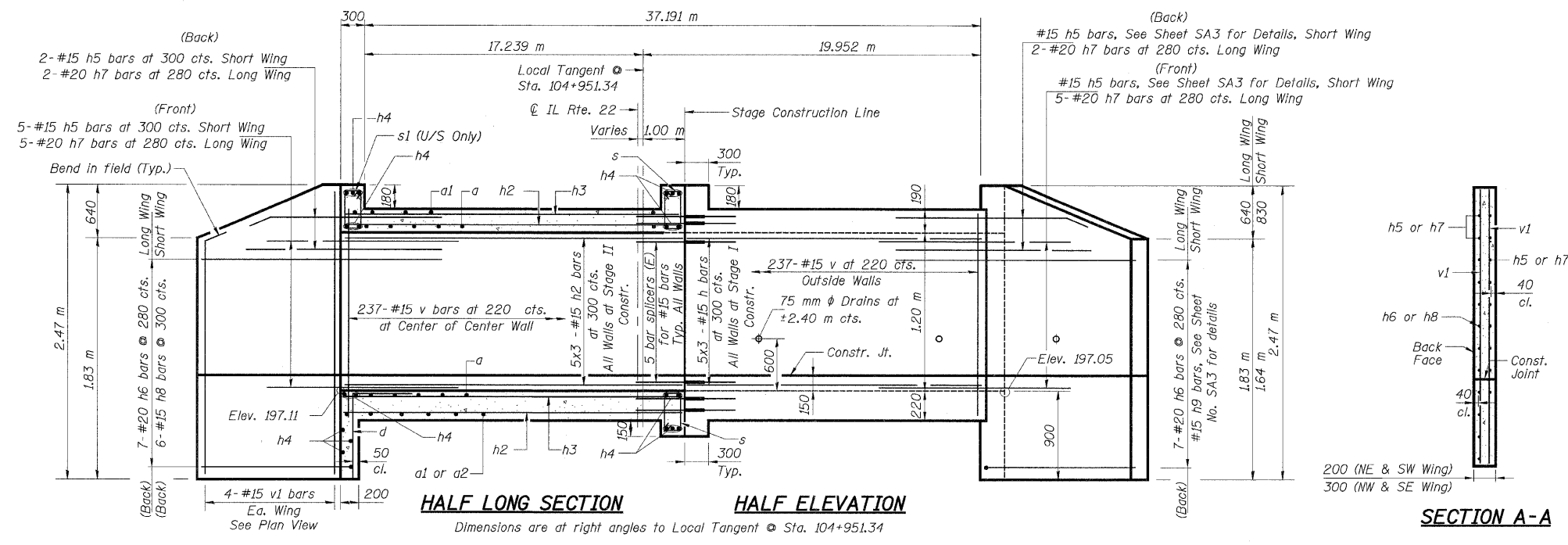


F.A.P. RTE.	SECTION	COUNTY	TOTAL SHEETS	SHEET NO.
337	20R-6	LAKE	149	88
STA.	TO STA.			
FED. ROAD DIST. NO.	ILLINOIS FED. AID PROJECT			



Bar Size	Min. Lap
#15	640
#20	790
#25	1,320

- Notes**
1. A distance of half the length of the wingwall but not less than 2 m of the barrel shall be poured monolithically with the wingwalls.
 2. See Sheet SA3 for Culvert details and Bill of Material.
 3. Bars indicated thus 12 x 4 - #15 etc. indicate 12 lines of bars with 4 lengths per line.
 4. All dimensions are in millimeters (mm) except as noted.

* Cut a and a1 bars to fit skew. Use balance of bar in opposite end.
 ** Cut a and a1 bars to fit skew. Use balance of bar in Stage II.

NAME	DATE

ILLINOIS DEPARTMENT OF TRANSPORTATION

CULVERT DETAILS I
ILLINOIS ROUTE 22 OVER
INDIAN CREEK TRIBUTARY

FAP 337 SECTION 20R-6
 STRUCTURE NUMBER 049-0233
 LAKE COUNTY STATION 104+951.34

SCALE: NONE DRAWN BY: E. MROCEK
 DATE: 1/28/2009 CHECKED BY: G. HATLESTAD

P:\Lislie\DOT\9171\AO\Drawings\STRUCT\INDIAN_CREEK_Tributary\02_culvert1.dgn
 P:\Lislie\DOT\9171\AO\Drawings\STRUCT\INDIAN_CREEK_Tributary\02_culvert1.dgn
 2/5/2009 5:16:58 PM
 KoepfenRdwy_Lislie

