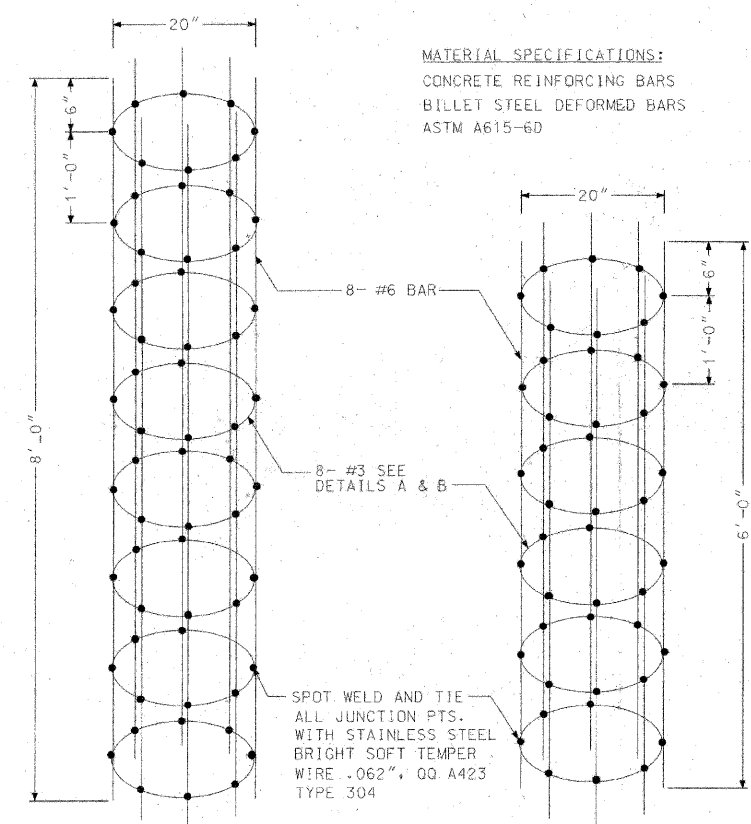
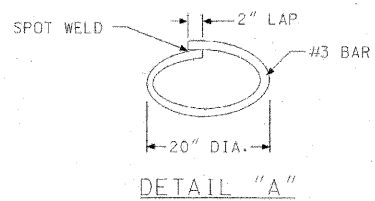
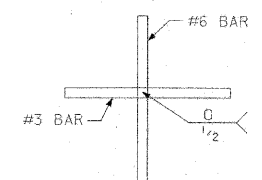


F.A.I. RTE.	SECTION	COUNTY	TOTAL SHEETS	SHEET NO.
57	2021.1B-R	COOK	101	039
STA.	TO STA.			
FED. ROAD DIST. NO. 1	ILLINOIS	FED. AID PROJECT		
CONTRACT NO. 62532				



**MATERIAL SPECIFICATIONS:**  
 CONCRETE REINFORCING BARS  
 BILLET STEEL DEFORMED BARS  
 ASTM A615-6D

CODE	COMMODITY	SIZE	QUANTITY
20-9545-	ROD, WELDING LINCOLN WELD OR EQUAL	#7018	5#
31-	WIRE, TIE STEEL STAINLESS QQ W423 COND. "A" SOFT	.062	1.0#



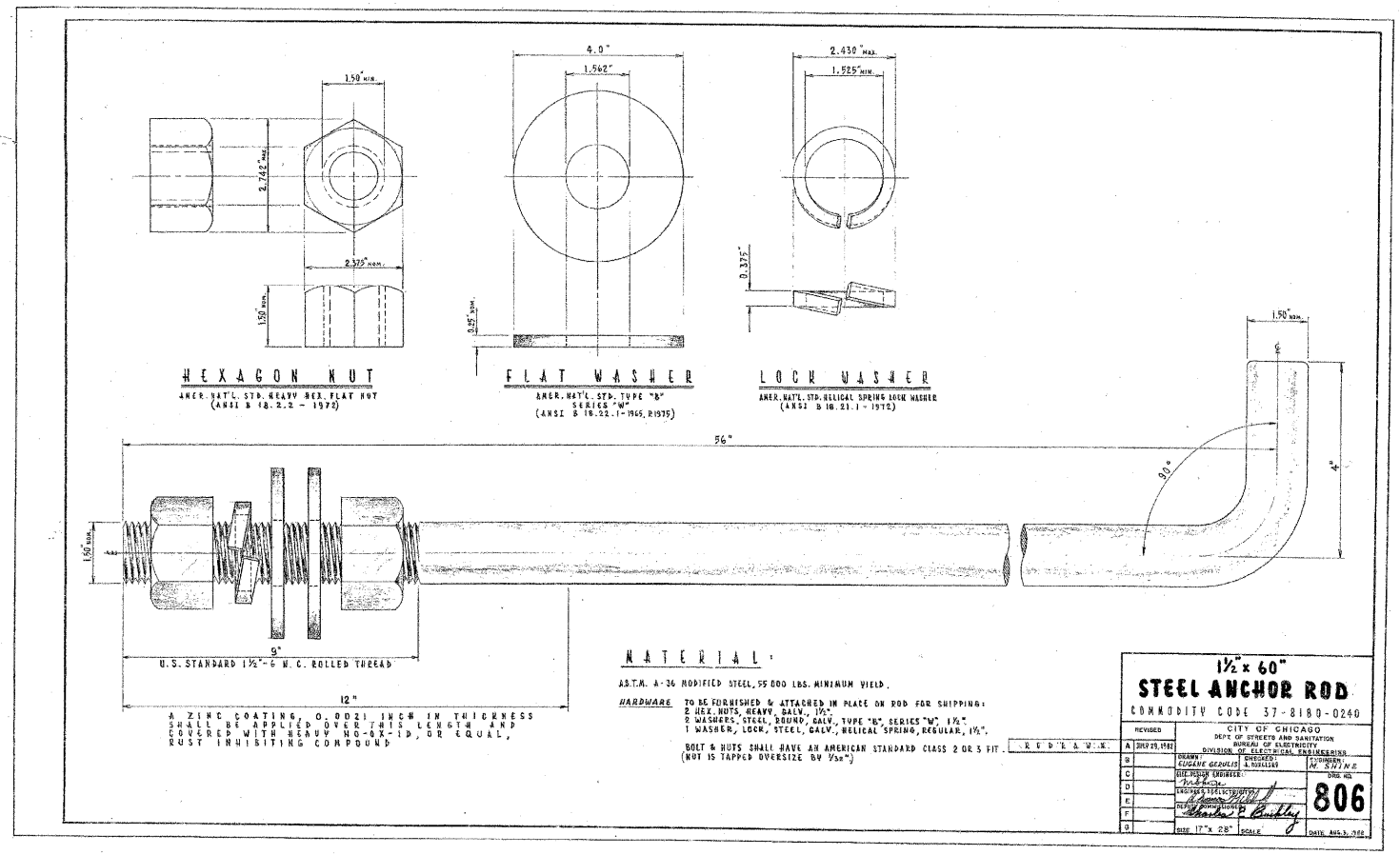
REVISION	DATE

**STEEL CAGES FOR POLE FOUNDATIONS**

CITY OF CHICAGO  
 DEPT. OF STREET AND SANITATION  
 DIVISION OF ELECTRICAL AND MECHANICAL

DESIGNED BY: [Signature]  
 DRAWN BY: [Signature]  
 CHECKED BY: [Signature]

793A



**MATERIAL:**  
 A.S.T.M. A-36 ROLLED STEEL, 55 000 LBS. MINIMUM YIELD.  
 HARDWARE TO BE FURNISHED & ATTACHED IN PLACE ON ROD FOR SHIPPING:  
 2 HEX. NUTS, HEAVY, GALV., 1 1/2"  
 2 WASHERS, STEEL, BORDO, GALV., TYPE "B", SERIES "M", 1 1/2"  
 1 WASHER, LOCK, STEEL, GALV., METALIC SPRING LOCK WASHER, 1 1/2"  
 BOLT & NUTS SHALL HAVE AN AMERICAN STANDARD CLASS 2 OR 5 FIT.  
 (NOT TO TAPPED OVERSIZE BY 95%)

<b>1 1/2" x 60"</b>	
<b>STEEL ANCHOR ROD</b>	
COMMODITY CODE 57-8180-0240	
REVISED	CITY OF CHICAGO
A	DEPT. OF STREET AND SANITATION
B	DIVISION OF ELECTRICAL AND MECHANICAL
C	DESIGNED BY: [Signature]
D	DRAWN BY: [Signature]
E	CHECKED BY: [Signature]
F	DATE: 11/16/09
G	SCALE: NONE

4-NORTH ST. BOPEBERGON  
 1-16-2009, 11:46:53  
 T:\DOCUMENT\950860\CIVIL\DRAW\KHO\KHO05.DWG  
 1 2 3 4 5 6 7 8 9 10 11 12 13 14 15 16 17 18 19 20 21 22 23 24 25 26 27 28 29 30 31 32 33 34 35 36 37 38 39 40 41 42 43 44 45 46 47 48 49 50 51 52 53 54 55 56 57 58 59 60 61 62 63

REVISIONS	
NAME	DATE

ILLINOIS DEPARTMENT OF TRANSPORTATION  
 111TH STREET OVER  
 F.A.I ROUTE 57 (INTERSTATE 57)

ELECTRICAL STANDARD DETAILS

SCALE: NONE  
 DATE: 01/16/09  
 DRAWN BY: N/A  
 CHECKED BY: N/A

**TENG**  
 TENG & ASSOCIATES, INC.  
 ENGINEERS/ARCHITECTS/PLANNERS  
 205 N. MICHIGAN AVE., CHICAGO, IL 60601  
 TELEPHONE: 312/615-0000

ES-03