

F.A.U. RTE.	SECTION	COUNTY	TOTAL SHEETS	SHEET NO.
1332	(3071,3071A&3072)RS-3	COOK	38	1

STATE OF ILLINOIS
DEPARTMENT OF TRANSPORTATION
DIVISION OF HIGHWAYS

PROPOSED HIGHWAY PLANS

FAU ROUTE 1332 (OAKTON STREET)
S. DES PLAINES RIVER RD TO US 14 (CALDWELL AVE)
SECTION (3071, 3071A & 3072) RS-3
PROJECT: *ESP-1332(015)*
RESURFACING (3P)
COOK COUNTY
C-91-217-04

FOR INDEX OF SHEETS, SEE SHEET NO. 2

PROJECT LOCATED IN
THE CITY OF PARK RIDGE
AND THE VILLAGE OF NILES

D-91-217-04



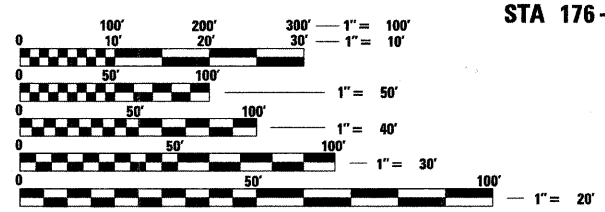
LOCATION OF SECTION INDICATED THUS: - [black rectangle] -

TRAFFIC DATA

2007 ADT = 28,400 VEHICLES PER DAY
SPEED LIMIT = 35 MPH

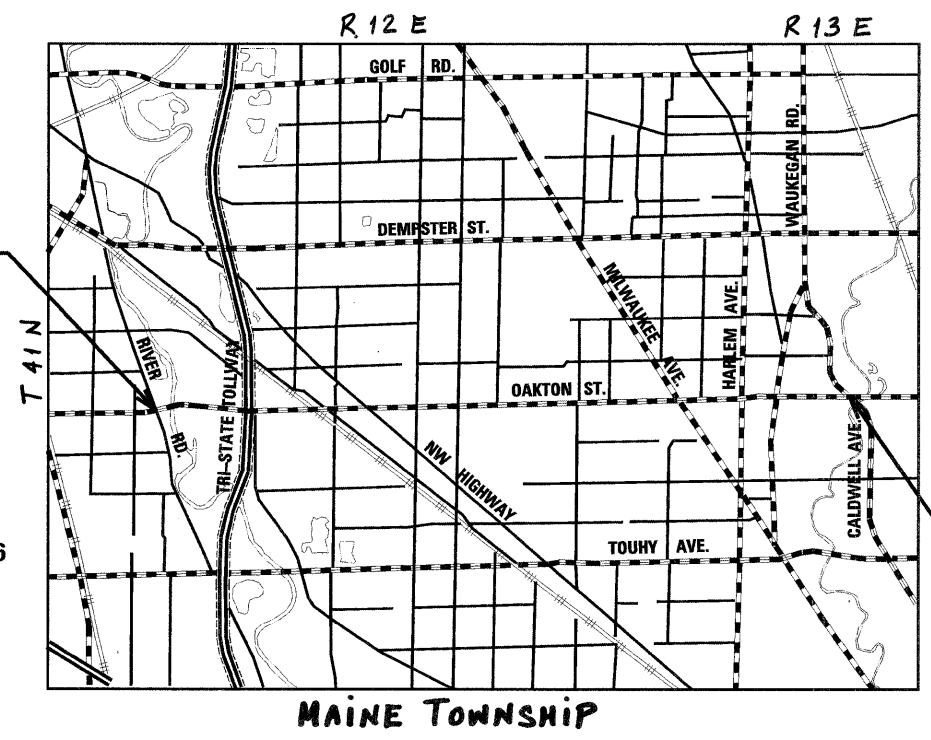
PROJECT BEGINS
STA 6+12

OMISSIONS
STA 10+10 TO STA 12+73
STA 34+80 TO STA 37+57
STA 59+58 TO STA 105+56
STA 176+23 TO STA 178+16



FULL SIZE PLANS HAVE BEEN PREPARED USING STANDARD ENGINEERING SCALES. REDUCED SIZED PLANS WILL NOT CONFORM TO STANDARD SCALES. IN MAKING MEASUREMENTS ON REDUCED PLANS, THE ABOVE SCALES MAY BE USED.

J.U.L.I.E.
JOINT UTILITY LOCATION INFORMATION FOR EXCAVATION
1-800-892-0123
OR 811



PROJECT ENDS
STA 231+76

GROSS LENGTH OF PROJECT = 22,564 FT = 4.27 MILES
NET LENGTH OF PROJECT = 17,233 FT = 3.27 MILES

LOCATION MAP
NOT TO SCALE

PROJECT ENGINEER: MICHELLE AQUINO (847) 705-4606
PROJECT MANAGER: LONG TRAN (847) 705-4232

CONTRACT NO. 62755

STATE OF ILLINOIS
DEPARTMENT OF TRANSPORTATION
DIVISION OF HIGHWAYS

SUBMITTED FEBRUARY 6, 20 09

Diana M. O'Keefe DEPUTY DIRECTOR OF HIGHWAYS, REGION ENGINEER
March 27, 20 09

Charles G. Ingersoll ENGINEER OF DESIGN AND ENVIRONMENT
March 27, 20 09

Christina M. Reed DIRECTOR OF HIGHWAYS, CHIEF ENGINEER

rjngroup
Excellence through Ownership
200 West Front Street
Wheaton, IL 60187

**PRINTED BY THE AUTHORITY
OF THE STATE OF ILLINOIS**

STATE OF ILLINOIS
BRANDON L. BUZZELL
56615
NAPERVILLE
PROFESSIONAL ENGINEER
2/2/09
Expires 11-30-09