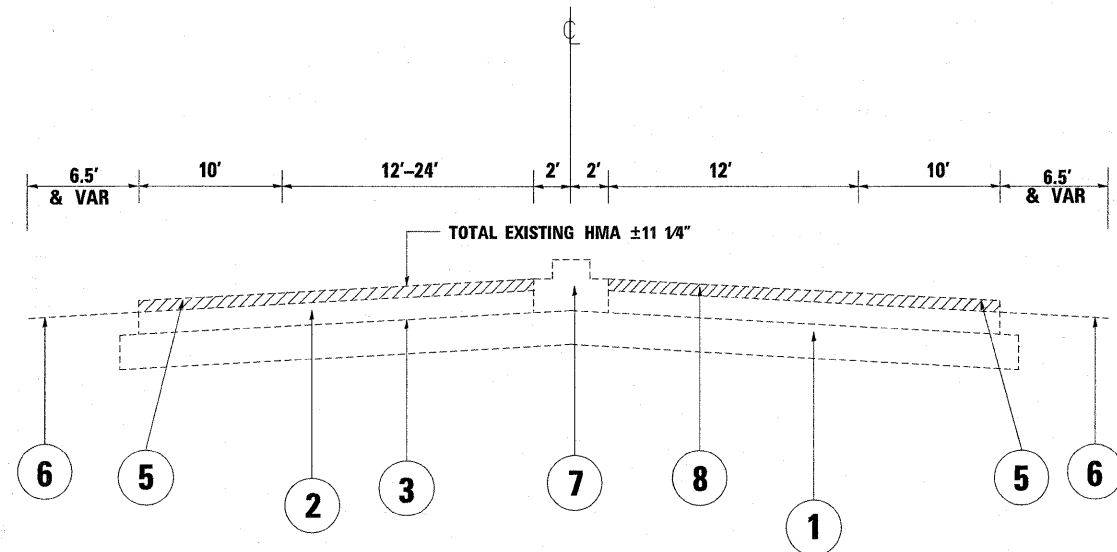


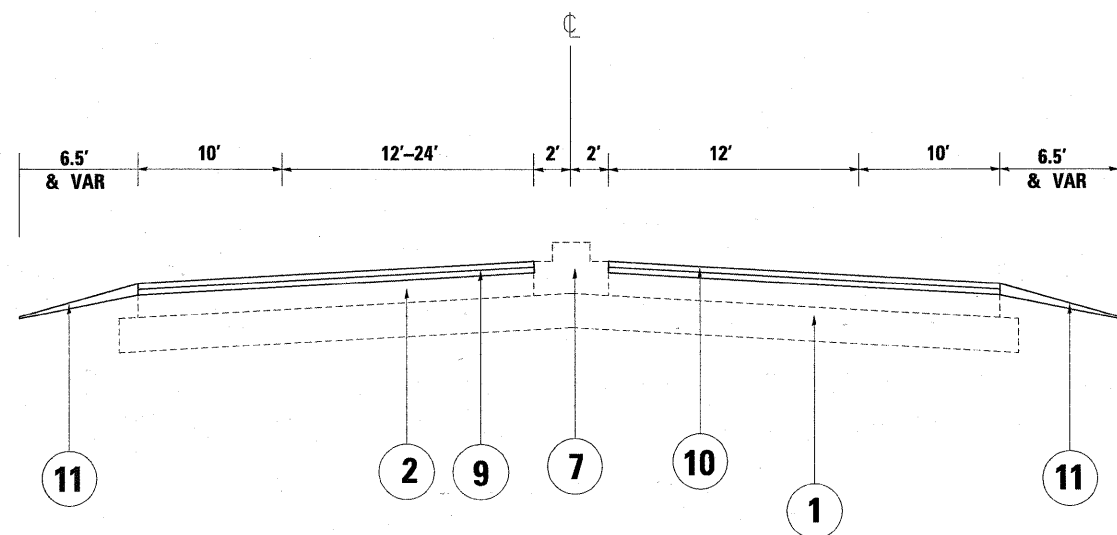
ILL. RTE 60



EXIST. TYPICAL SECTION

STA. 11+43 TO 21+00

ILL. RTE 60



PROP. TYPICAL SECTION

STA. 11+43 TO 21+00

LEGEND

- ① EXISTING P.C.C PAVEMENT, ±9"
- ② EXISTING HOT-MIX ASPHALT AFTER MILLING, ±9"
- ③ EXISTING HOT-MIX ASPHALT PAVEMENT, ±11 1/4"
- ④ EXISTING P.C.C WIDENING, 9"
- ⑤ EXISTING BITUMINOUS SHOULDER
- ⑥ EXISTING AGGREGATE SHOULDER
- ⑦ EXISTING CONCRETE MEDIAN, TYPE M-2
- ⑧ PROP. HMA SURFACE REMOVAL, 2 1/4"
- ⑨ PROP. POLY. LEVELING BINDER (MACHINE METHOD), IL-4.75, N50, 3/4"
- ⑩ PROP. HOT-MIX ASPHALT SURFACE COURSE, MIX "D", N70, 1 1/2"
- ⑪ PROP. AGGREGATE WEDGE SHOULDERS, TYPE B

MIXTURE REQUIREMENTS

MIXTURE USES	AC TYPE	VOIDS
HOT-MIX ASPHALT SURFACE COURSE, MIX "D", N70 (IL 9.5 mm)	PG 64-22	4% AT 70 GYR.
POLY. LEVELING BINDER (MACHINE METHOD), IL-4.75, N50	SBS/SBR PG 76-28/-22	4% AT 50 GYR.
CLASS D PATCHES (HMA BINDER IL-19 mm)	PG 64-22 *	4% AT 70 GYR.

NOTE 1: THE UNIT WEIGHT USED TO CALCULATE ALL HOT-MIX ASPHALT SURFACE MIXTURE IS 112 LBS/SQYD/IN

* NOTE 2: WHEN RAP EXCEEDS 20% THE NEW ASPHALT BINDER IN THE MIX SHALL BE PG 58-22

NOTE:

THE CONTRACTOR SHALL MILL FIRST BEFORE PATCHING

FILE NAME =	USER NAME = paraynoel	DESIGNED -	REVISED -	STATE OF ILLINOIS DEPARTMENT OF TRANSPORTATION	TYPICAL SECTIONS IL. ROUTE 60/83 (IL. RTE. 120 - S. OF ILL 176)	F.A.P. RTE.	SECTION	COUNTY	TOTAL SHEETS	SHEET NO.	
at\pwork\PW100T\PARAYNOAL\dms90669\st	rdwy.dgn	DRAWN -	REVISED -			535	118RS-4	LAKE	35	4	
		CHECKED -	REVISED -			CONTRACT NO. 62779					
		DATE -	REVISED -			ILLINOIS FED. AID PROJECT					
				SCALE:		SHEET NO. OF SHEETS		STA. TO STA.			